



A single source of truth that offers insights from multiple systems in one common, actionable, map-based user interface

HITACHI
Inspire the Next[™]



Clear and comprehensive insight
into your operations

Hitachi Map

Bringing information and action together

IT/OT convergence is more than just bringing information into a data warehouse. It requires understanding the connections between disparate data systems, presenting this information comprehensively in a common way and empowering users from within one application. That's the value of Hitachi Map.

During a typical day in asset-intensive industries such as utilities, transportation and mining, your staff must access and interact with data from numerous systems. Common data layers and the typical source systems are shown below.

Common data layers	Common source systems
Asset (location, type, status)	ADMS
Network data	APM
Weather	EAM
Workers	FSM / WFM
Work order (location, status)	GIS
	Spreadsheets
	And many more...

This data is often stored in forms-based systems with laborious user interfaces. Just getting to the information is time-consuming...and then the data must be analyzed in conjunction with information from other systems in order to effectively utilize it.

With the typical technology ecosystem in any company, making effective decisions is a challenge, and acting on those decisions is even harder. But what if you could bring all of this data together into a simple map and take immediate action?

Hitachi Map brings together information that typically resides in separate systems into a single, interactive and easy-to-use geospatial view. Users have intuitive access to key information in a single place without having to navigate multiple systems, interpret contextual variations or understand data relationships.

Hitachi Map delivers value across your organization



Field operations

- Increased worker safety through operational awareness and immediate communication
- Intuitive access to asset and work information relative to current location
- View of network information in the field



Maintenance

- Quickly identify potential failures and take action on the spot
- Intuitive access to work information for more efficient workforce deployment
- Consolidate work orders to improve efficiency in the field or reduce truck rolls.



Management and IT

- Actionable insight displayed in one place
- Data ingestion approach leverages existing IT systems without replacement projects
- Minimal training needed

Improves visibility and safety

In addition to improving operational visibility, users can act on the information directly from the Map. For example, an asset manager can request work on an asset without needing to jump into the underlying work management system. Or users can access an asset’s manuals, parts diagrams and 3D models from the Map application rather than having to search for the information in another system.

Hitachi Map also improves workforce safety by providing visibility of technicians’ current locations and leveraging geofencing to flag potentially hazardous situations. For example, rules can be applied to designated areas to raise alerts if more than the approved number of workers enter the zone. These alerts go to both the technician and the back office.

Finally, Hitachi Map brings network visibility into the hands of field workers and other stakeholders across the organization. This is not only beneficial to the field workers, but also for maintenance planners in the office who want to understand the impact of an asset’s failure.

Map is an integral component of Hitachi Energy’s Lumada asset and work management portfolio, but it is not limited to Lumada applications. Whether you use SAP®, Maximo®, Oracle® or any of a wide range of information systems, Hitachi Map can simplify your processes and operations so you get more from all your systems.



Quickly identify the location and status of your assets, crews, and work orders for immediate situational awareness.

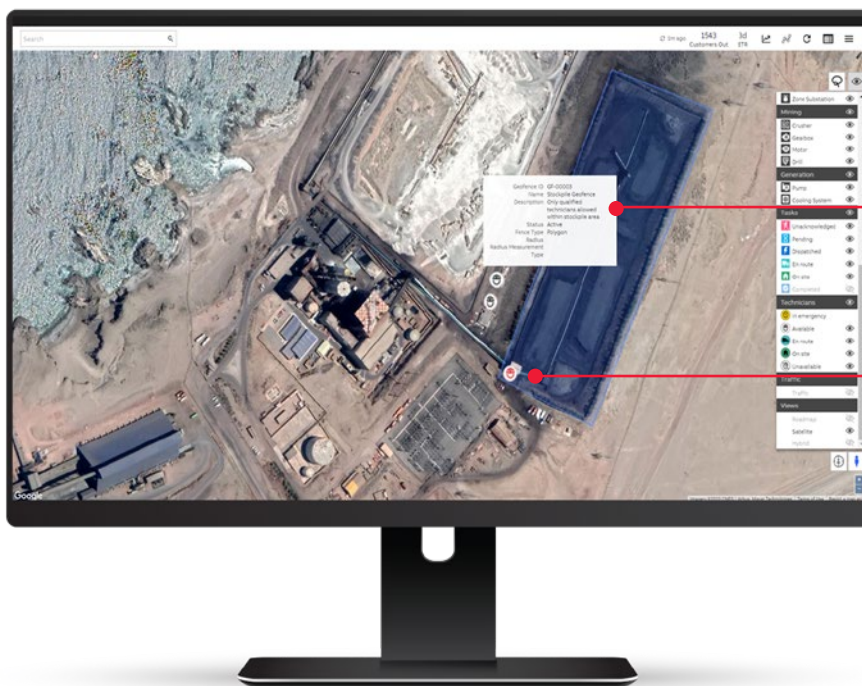


Consolidate work orders to reduce truck rolls and improve response times



Monitor safety zones to improve safety for your crews as well as the public

Hitachi Map presents information and enables action across the Lumada suite or third-party solutions. It enables faster outcomes by providing your staff with critical information spanning multiple operational systems, so they can weigh key decision factors and take immediate action. Whether in the field or the boardroom, Hitachi Map enables situational awareness across the enterprise for better communication and operational visibility.



GEOFENCING EXAMPLE

A worker has entered the stockpile area, and has breached the number of technicians allowed within the zone. Both the worker and supervisors are notified so they can take immediate action on this information to ensure safe operations.

Hitachi Energy
marketing-update@hitachienergy.com
hitachienergy.com

© 2022 Hitachi Energy. All rights reserved.
Specifications subject to change without notice.
SAP, Maximo and Oracle are registered trademarks of their
respective owners. No endorsement is expressed or implied.

9AKK107492A9831