



DATA SHEET

PowerMark Plus™

Three phase load centers



The PowerMark Plus™ Three phase load center is designed for use in commercial or high-rise residential units. The galvanized box and tin plated copper stabs ensure the reliability and durability of the load center.

The product is available with the main circuit breaker factory installed or the main lugs factory installed.

Features

- 125 A through 225 A main ampere ratings
- Aluminum bus with copper mounting stabs providing copper-to-copper stab connections
- UL Listed (Panelboard No. 67)
 - Service barriers included for factory installed main circuit breaker
- 22 kAIC symmetrical short circuit rating standard
- 60°C/75°C conductor rating
- Suitable for use as service entrance equipment when installed in accordance the National Electrical Code

Benefits

- FORMULA A2 breakers deliver superior performance and increased reliability in a sturdy and modern circuit breaker frame
- The galvanized box and tin-plated copper stabs ensure the reliability and durability of the load center
- Quick and easy selection and ordering with fewer stock-keeping units (SKUs)
- Full product range to meet various applications

PowerMark Plus three phase load centers



TM42422C

Three phase, four wire, 208Y/120Vac¹

Main breaker factory installed

Indoor (NEMA 1) enclosure

- Combination flush/surface front
- B suffix indicates bottom feed

Technical data

Main ampere rating	1 pole, 1" spaces	2 pole, 1" spaces	3 pole, 1" spaces	Total 1 pole spaces	Product no.	Main wire size (AWG/kcmil) Cu-Al	Equipment ground kit (Order separately)	Box no.	Drawing no.	Feed type
100	12	6	4	12	TM12410C ²	6-1/0 (Cu), 4-1/0 (Al)	TGK12, TGK24	6	10103091SH17	Top
	18	8	6	18	TM18410C ²		TGK24, TGK32		10103091SH17	Bottom
125	30	14	10	30	TM30412C	1-3/0 (Cu), 2/0-3/0 (Al)	TGK32	12	10103091SH21	Top
	30	14	10	30	TM30412CB				10103091SH21	Bottom
150	24	12	8	24	TM24415C	1-3/0 (Cu), 2/0-3/0 (Al)	TGL1, TGL2, TGL20, TNG3, TGN6	11	10103091SH21	Top
	24	12	8	24	TM24415CB		TGK32		10103091SH21	Bottom
	30	14	10	30	TM30415C	1-3/0 (Cu), 2/0-3/0 (Al)	TGK32	12	10103091SH21	Top
	30	14	10	30	TM30415CB				10103091SH21	Bottom
	42	20	14	42	TM42415C		TGK42	15	10103091SH23	Top
	42	20	14	42	TM42415CB				10103091SH23	Bottom
200	24	12	8	24	TM24420C	1-3/0 (Cu), 2/0-3/0 (Al)	TGK32	12	10103091SH21	Top
	24	12	8	24	TM24420CB				10103091SH21	Bottom
	30	14	10	30	TM30420C	1-250 (Cu), 2/0-250 (Al)	TGK32	13	10103091SH22	Top
	30	14	10	30	TM30420CB				10103091SH22	Bottom
	42	20	14	42	TM42420C		TGK42	14	10103091SH24	Top
	42	20	14	42	TM42420CB				10103091SH24	Bottom
225	42	20	14	42	TM42422C	1-300 (Cu), 2/0-300 (Al)	(2) TGL2	15A	10103091SH25	Top
	42	20	14	42	TM42422CB				10103091SH25	Bottom



TM42422R

Three phase, four wire, 208Y/120Vac¹

Main breaker factory installed

Outdoor (NEMA 3R) enclosure

Technical data

Main ampere rating	1 pole, 1" spaces	2 pole, 1" spaces	3 pole, 1" spaces	Total 1 pole spaces	Product no.	Main wire size (AWG/kcmil) Cu-Al	Equipment ground kit (Order separately)	Box no.	Drawing no.	Feed type
100	18	8	6	18	TM18410R	6-1/0 (Cu), 4-1/0 (Al)	TGK24, TGK32	R4	10103091SH2	Top
125	30	14	10	30	TM30412R	1-3/0 (Cu), 2/0-3/0 (Al)	TGK32	R7	10103091SH3	Top
150	24	12	8	24	TM24415R	1-3/0 (Cu), 2/0-3/0 (Al)	TGK32	R6	10103091SH5	Top
	24	14	10	30	TM30415R				R7	10103091SH3
200	30	14	10	30	TM30420R	1-250 (Cu), 2/0-250 (Al)	TGK32	12A	10103091SH3	Top
	42	20	14	42	TM42420R		TGK42		R8	10103091SH6
225	42	20	14	42	TM42422R	1-300 (Cu), 2/0-300 (Al)	TGK42	16A	10103091SH6	Top

¹ Also UL Listed for three phase, four-wire 240/120 Volts Hi Leg delta and three phase, three-wire 240 Volts (240V breakers must be installed).

² 100 Amp indoor devices UL listed for bottom feed by installing complete unit upside down.

PowerMark Plus three phase load centers



TL18415C



TL42422C

Three phase, four wire, 208Y/120Vac¹
 Main lugs factory installed
 Indoor (NEMA 1) enclosure

- Combination flush/surface front

Technical data

Main ampere rating	1 pole, 1" spaces	2 pole, 1" spaces	3 pole, 1" spaces	Total 1 pole spaces	Product no.	Main wire size (AWG/kcmil) Cu-Al	Equipment ground kit (Order separately)	Box no.	Drawing no.	Feed type
125	12	6	4	12	TL12412C ²	6-2/0	TGK12, TGK24	4	10103091SH16	Top Bottom
150	18	8	6	18	TL18415C ²	1-3/0 (Cu), 2/0-3/0 (Al)	TGK24, TGK32	7	10103091SH2	Top
	24	12	8	24	TL24415C ²				10103091SH18	Bottom
200	18	8	6	18	TL18420C ²	1-250 (Cu), 2/0-250 (Al)	TGK32	8	10103091SH2	Top
	30	14	10	30	TL30420C ²				11	10103091SH21
	42	20	14	42	TL42420C			13	10103091SH23	
225	30	14	10	10	TL30422C ³	1-300 (Cu), 2/0-300 (Al)	(2) TGL2	15	10103091SH25	Top
	42	20	14	42	TL42422C ³				10103091SH25	Bottom



TL18420R



TL42422R

Three phase, four wire, 208Y/120Vac¹
 Main lugs factory installed
 Outdoor (NEMA 3R) enclosure

Technical data

Main ampere rating	1 pole, 1" spaces	2 pole, 1" spaces	3 pole, 1" spaces	Total 1 pole spaces	Product no.	Main wire size (AWG/kcmil) Cu-Al	Equipment ground kit (Order separately)	Box no.	Drawing no.	Feed type
125	12	6	4	12	TL12412R ²	6-2/0	TGK12, TGK24	R3	10103091SH1	Top
150	18	8	6	18	TL18415R ²	1-3/0 (Cu), 2/0-3/0 (Al)	TGK24, TGK32	R4	10103091SH2	Top
	24	12	8	24	TL24415R ²				10103091SH2	
200	18	8	6	18	TL18420R ²	1-250 (Cu), 2/0-250 (Al)	TGK32	R4	10103091SH2	Top
	30	14	10	30	TL30420R ²				R6	10103091SH5
	42	20	14	42	TL42420R ³			TGK42	R8	10103091SH6
225	42	20	14	42	TL42422R ³	1-300 (Cu), 2/0-300 (Al)	TGK42	R8	10103091SH6	Top

¹ Also UL Listed for three phase, four-wire 240/120 Volts ac delta and three phase, three-wire 240 Volts ac branch breakers installed.

² Alternate main breaker 100 Amp max. THQL (10kAIC), THHQL (22kAIC) three-pole, use retainer THQLRK.

³ Not suitable for use as service entrance equipment.

Dimensions and Knockouts

01 Boxes 4, 6, 7, 8,
11, 12, 13, 14, 15A

02 Boxes R3, R4, R6,
R7, R8, 12A, 16A

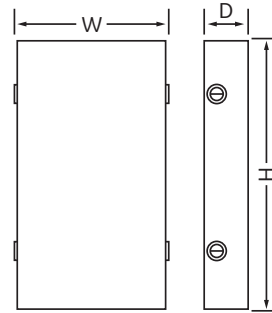
03 Boxes 4, 6, 7, 8,
11, 12, 13, 14, 15A

04 Boxes R3, R4, R6,
R7, R8, 12A, 16A

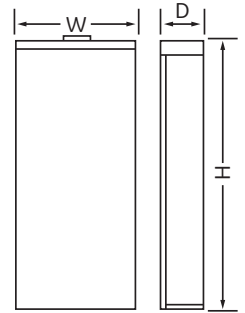
05 Box 15

Dimensions (inches)

Box	Width	Height	Depth
4	14	19	3 3/4
6	14	23	3 3/4
7	14	24 11/16	3 3/4
8	14	26 7/16	3 3/4
11	14	33 3/16	3 3/4
12	14	35 7/16	3 3/4
12A	14	37 1/4	4 5/8
13	14	39 3/16	3 3/4
14	14	43 7/16	3 3/4
15	14	43 7/16	4 5/8
15A	14	44 15/16	4 5/8
16A	14	45 3/16	5 3/4
R3	12 1/2	21 3/16	4 5/8
R4	14	33 3/16	4 5/8
R6	14	35 3/17	4 5/8
R7	14	39 3/16	4 5/8
R8	14	43 11/16	5 3/4



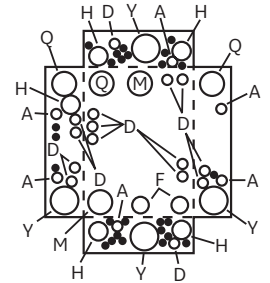
01



02

Indoor enclosure knockouts

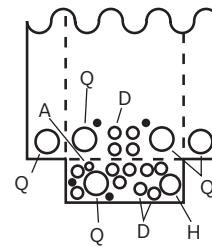
Symbol	A	B	C	D	F	H	K	M	N	Q	S	Y
Conduit Size in inches	5/16	-	-	-	-	-	-	-	-	-	-	-
-	3/8	-	3/8	-	3/8	-	-	-	-	-	-	-
-	1/2	1/2	1/2	1/2	1/2	1/2	-	-	-	-	-	-
-	-	-	3/4	3/4	3/4	3/4	3/4	-	-	-	-	3/4
-	-	-	-	-	1	1	1	1	-	1	-	1
-	-	-	-	-	-	1 1/4	1 1/4	1 1/4	1 1/4	-	1 1/4	1 1/4
-	-	-	-	-	-	-	1 1/2	1 1/2	1 1/2	1 1/2	1 1/2	1 1/2
-	-	-	-	-	-	-	-	2	2	2	2	2
-	-	-	-	-	-	-	-	-	-	2 1/2	2 1/2	2 1/2
-	-	-	-	-	-	-	-	-	-	-	3	-
-	-	-	-	-	-	-	-	-	-	-	-	-
-	-	-	-	-	-	-	-	-	-	-	-	-



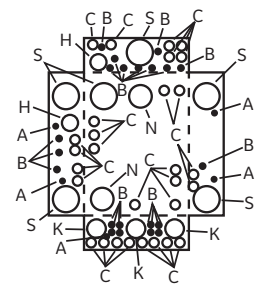
03

Outdoor enclosure knockouts

Symbol	A	D	H	Q
Conduit Size in inches	9/16	-	-	-
-	3/8	-	-	-
-	1/2	1/2	1/2	-
-	-	3/4	3/4	3/4
-	-	-	1	1
-	-	-	1 1/4	1 1/4
-	-	-	-	1 1/2
-	-	-	-	2
-	-	-	-	2 1/2
-	-	-	-	-
-	-	-	-	-
-	-	-	-	-



04



05

ABB Inc.
305 Gregson Drive
Cary, NC 27511
United States

electrification.us.abb.com

GE is a trademark of GE.
Manufactured by ABB Inc. under license
from General Electric Company.

We reserve the right to make technical changes or modify the contents of this document without prior notice. With regard to purchase orders, the agreed particulars shall prevail. ABB Inc. does not accept any responsibility whatsoever for potential errors or possible lack of information in this document.

We reserve all rights in this document and in the subject matter and illustrations contained therein. Any reproduction, disclosure to third parties or utilization of its contents – in whole or in parts – is forbidden without prior written consent of ABB Inc. © 2022 ABB. All rights reserved.