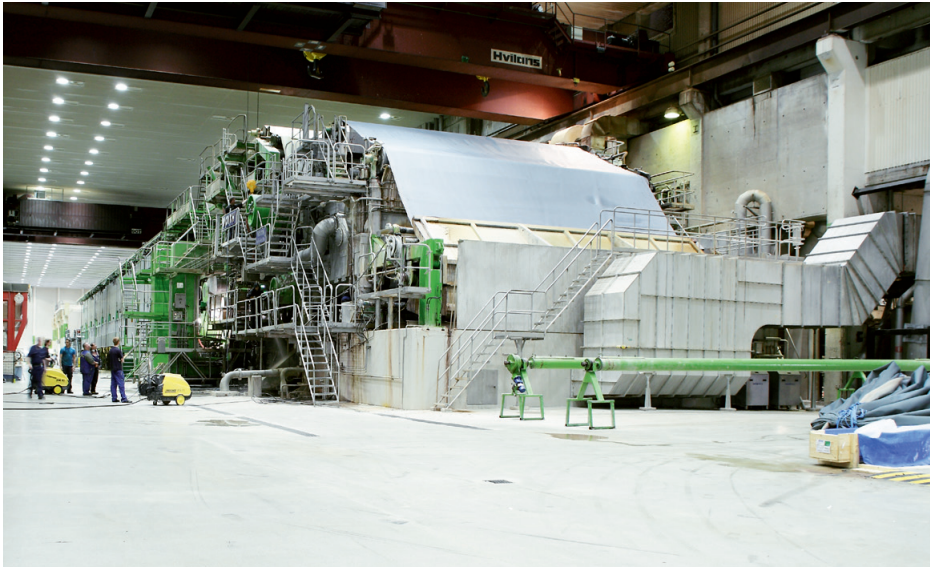


# Holmen Paper in Braviken, Norrköping, Sweden has successfully installed Pressductor PillowBlock load cells in their paper machines and calenders

Holmen Paper Braviken's paper machines and calenders are running with Pressductor PillowBlock load cells providing accurate web tension measurement



## About Holmen Paper

Holmen Paper offers quality products, excellent service and qualified technical advice to daily newspapers, retailers, telephone directory companies, publishers and magazine publishers.

They continuously strive to strengthen their position as a dedicated partner. Close communication with their customers results in better products and new value added solutions.

Holmen Paper is a business area within the Holmen Group. The head office is situated in Norrköping. They are one of the leading manufacturers of wood-containing printing paper in Europe with paper mills in Norrköping, Hallstadvik and Madrid.

Total production capacity amounts 2 million tonnes a year. Total turnover is approximately SEK 10 billion. Average number of employees is 2,200.

Holmen Paper produces wood-containing printing paper, mainly for daily newspapers, magazines, supplements, advertising matters and telephone directories.

(For more information, visit [www.holmenpaper.com](http://www.holmenpaper.com))

## Introduction

Since the very start of the Braviken paper operations in 1977 (today a part of the Holmen Paper Group) ABB's Pressductor load cells have been installed in the paper machines and calenders and are still running with very good accuracy and high reliability.

In addition to the good load cell quality there have over the years been great improvements of the tension electronics. Now in order to learn more about the development in tension electronics the mill management gives a push for training of the products and systems:

As Mr. Mats Alfredsson, Manager Electric and Control Systems and Mr. Peter Othberg, Group Manager, put it: "The more knowledge we and the operators have about the PFEA Tension Electronics and the Pressductor load cells, the sooner Holmen Paper Braviken will exchange into new modern tension electronics as well as into further developed ABB load cells. We always want to keep our staff in the frontline and also updated on the latest developments; this will favour our maintenance organization in the most efficient way."

"The ABB load cells have been installed since the start of the operations and we have only positive things to say about them."



### What has been achieved?

We ask Mr. Mats Alfredsson, Manager Electric and Control Systems and Mr. Peter Othberg, Group Manager, who concordantly express their opinion about the ABB Pressductor load cell installations:

”We are very happy with the Pressductor installations. The ABB load cells have been installed since the start of the operations and we have only positive things to say about them. ABB’s Pressductor load cells are very robust and durable with stable signals for stable measurement. Ever since the Pressductor PillowBlock load cells were installed and commissioned in 1977 they have been running very well without any problems.

The PFEA tension electronics is working very well. The display is easy to operate and there are many good functions to take advantage of. Our ambition is that the entire service and maintenance organization should have more skills about the ABB load cells and tension electronics.

In general, the ABB load cells have been running very well and we feel secure of the stable measurements that we achieve from the load cells day after day, month after month, year after year.”

### Supplied equipment

ABB Force Measurement has supplied Holmen Paper AB Braviken, Norrköping, Sweden with, in total, 40 Pressductor PillowBlock Load Cells.

### Facts on Holmen Paper AB Braviken, Norrköping, Sweden

Site	500,000 m <sup>2</sup>
Capacity	775,000 t/year
Turnover	350 million Euros
Export	> 80 %
Workforce	580
Products, brands	Wood-containing printing paper, mainly for daily newspapers, magazines, supplements, advertising matters and telephone directories. Besides newsprint, Braviken’s best known papers include white and colored telephone directory paper and the pink paper that is used by the financial press and sports press.
ABB load cells installed in pope machines and winders	Pressductor PillowBlock Load cells, model PFTL 101A/101B, are the most common load cells installed

### Contact us

#### ABB AB

Force Measurement  
 S-721 59 Västerås, Sweden  
 Phone: +46 21 32 50 00  
 Fax: +46 21 34 00 05  
 Internet: [www.abb.com/pressductor](http://www.abb.com/pressductor)