

## FPRC

# Flex Pendant Retractable Cable special version



ABB's Flex Pendant Retractable Cable, FPRC, is an automatic cable winding system for teach pendants. Spring driven, the system is a fast and easy way to maintain a clear and safe work area. Thanks to its spring-loaded retraction system, the FPRC automatically rewinds the teach pendant cable inside the reel.

ABB's spring-loaded Flex Pendant Retractable Cable system, the FPRC, is certified to ensure a safe work area. By keeping teach pendant cables off the production floor and out of the way of equipment, cable damage is reduced. The FPRC has been tested to minimize noise frequency on cables and to reduce signal loss.

### Dimensions

- 15 m: Medium size, the same as 10 m FPRC
- 25/30 m: Large size, the same as 20 m FPRC
- 35 m: Jumbo size

### Foundry

- 10 m: Medium size, the same as 10 m FPRC
- 15/20 m: Large size, the same as 20 m FPRC
- 25 m: Jumbo size

### Customized versions

- Extendable cable length 15, 25, 30, 35 m
- Different lengths of fixed cable (2.5 m standard)  
e.g. 10+8 m/15+10 m/25+5 m

### New Foundry version

- Construction  
The heat-resistant glass braided sleeving consists of textile glass with a braided construction of high thermal resistance and a specially developed impregnation of a silicone resin. The combination of these two polymers allows this sleeve to be used in applications with high thermal and mechanical demands. The Foundry FPRC version withstands high continuous temperature, is halogen-free, with moderate thermal insulation, is soft, flexible, lightweight and is RoHS compliant.
- Temperature  
Operative temperature: -55°C up to +240°C  
Short term temperature: +538°C
- Color  
White cable

Special version for S3 and S4 controller on request.

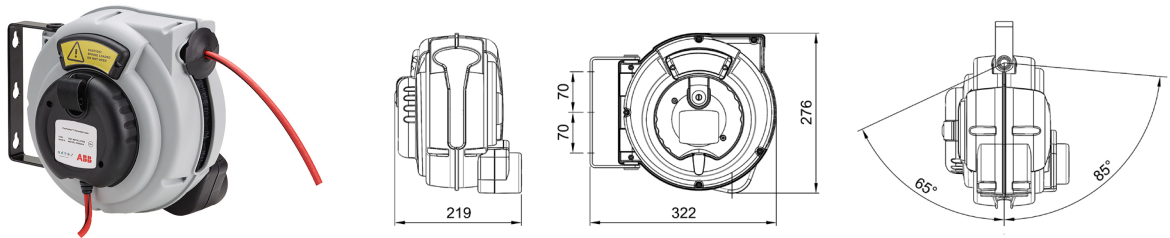
|                         | S4C/S4C+          | IRC5 Gtpu 1/2     | IRC5 Gtpu3        |
|-------------------------|-------------------|-------------------|-------------------|
| <b>Special version</b>  |                   |                   |                   |
| 15 m                    | IT3HNE00188-1     | IT3HAC11266-1     | IT3HAC031683-1    |
| 25 m                    | IT3HNE00188-1-25  | IT3HAC11266-4     | IT3HAC031683-004  |
| 30 m                    | IT3HNE00188-1-30  | IT3HAC11266-30    | IT3HAC031683-30   |
| 35 m                    | IT3HNE00188-1-35  | IT3HAC11266-35    | IT3HAC031683-35   |
| <b>Foundry version*</b> |                   |                   |                   |
| 10 m Foundry            | IT3HNE00188-1-10F | IT3HAC11266-1-10F | IT3HAC031683-35   |
| 15 m Foundry            | IT3HNE00188-1F    | IT3HAC11266-1F    | IT3HAC031683-1F   |
| 20 m Foundry            | IT3HNE00188-20F   | IT3HAC11266-20F   | IT3HAC031683-20F  |
| 25 m Foundry            | IT3HNE00188-1-25F | IT3HAC11266-4F    | IT3HAC031683-004F |

\* Please note that Foundry version have white cables.

## Dimensions

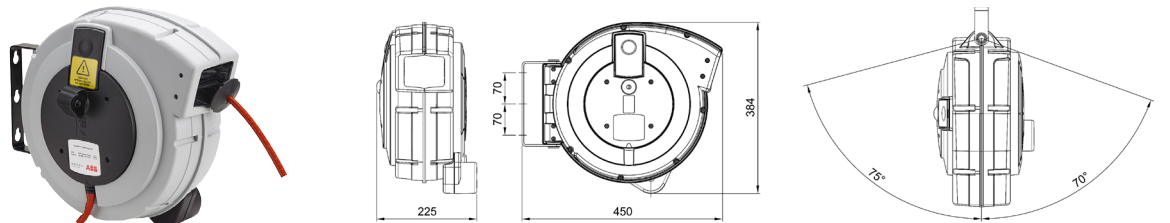
**Size:** H x L x P

Medium 322 x 276 x 219 For 10 m version



**Size:** H x L x P

Large 450 x 384 x 225 For 20 m version



**Size:** H x L x P

Jumbo 527 x 421 x 209 For 25 m and over

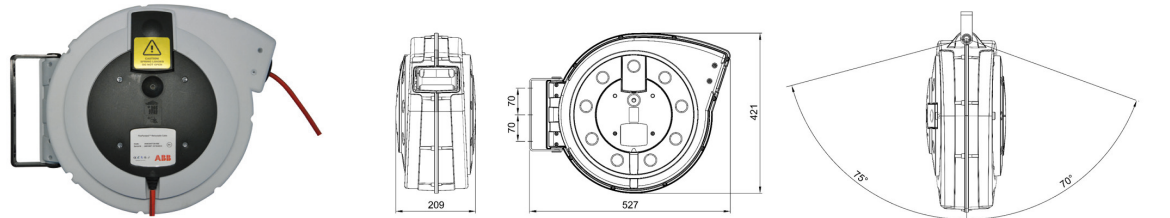


ABB AB Robotics  
Hydrovägen 10 SE-721 36  
Västerås, Sweden  
Phone: +46 21325000

ABB Engineering (Shanghai) Ltd.  
No. 4528, Kangxin Highway,  
Pudong New District,  
Shanghai, 201319, China  
Phone: +86 21 6105 6666

We reserve the right to make technical changes or modify the contents of this document without prior notice. With regard to purchase orders, the agreed particulars shall prevail. ABB does not accept any responsibility whatsoever for potential errors or possible lack of information in this document.

We reserve all rights in this document and in the subject matter and illustrations contained therein. Any reproduction, disclosure to third parties or utilization of its contents – in whole or in parts – is forbidden without prior written consent of ABB. Copyright © 2017 ABB  
All rights reserved