

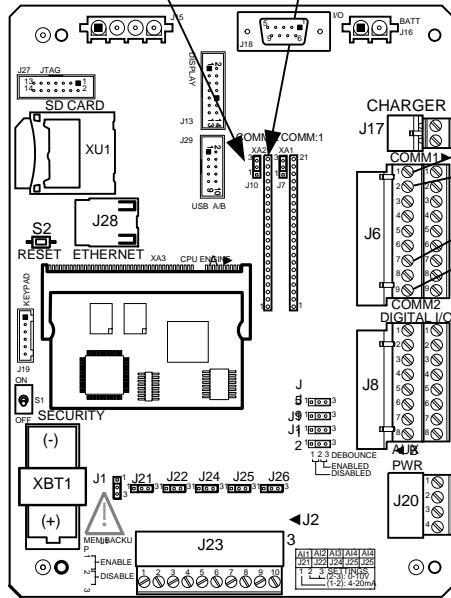
**NOTES:**

- WARNING:** This drawing does not illustrate the installation methods required for hazardous locations. Prior to any installation in a Classified Hazardous Location, verify installation methods by the Control Drawing referenced on the product's name tag and national and local codes.

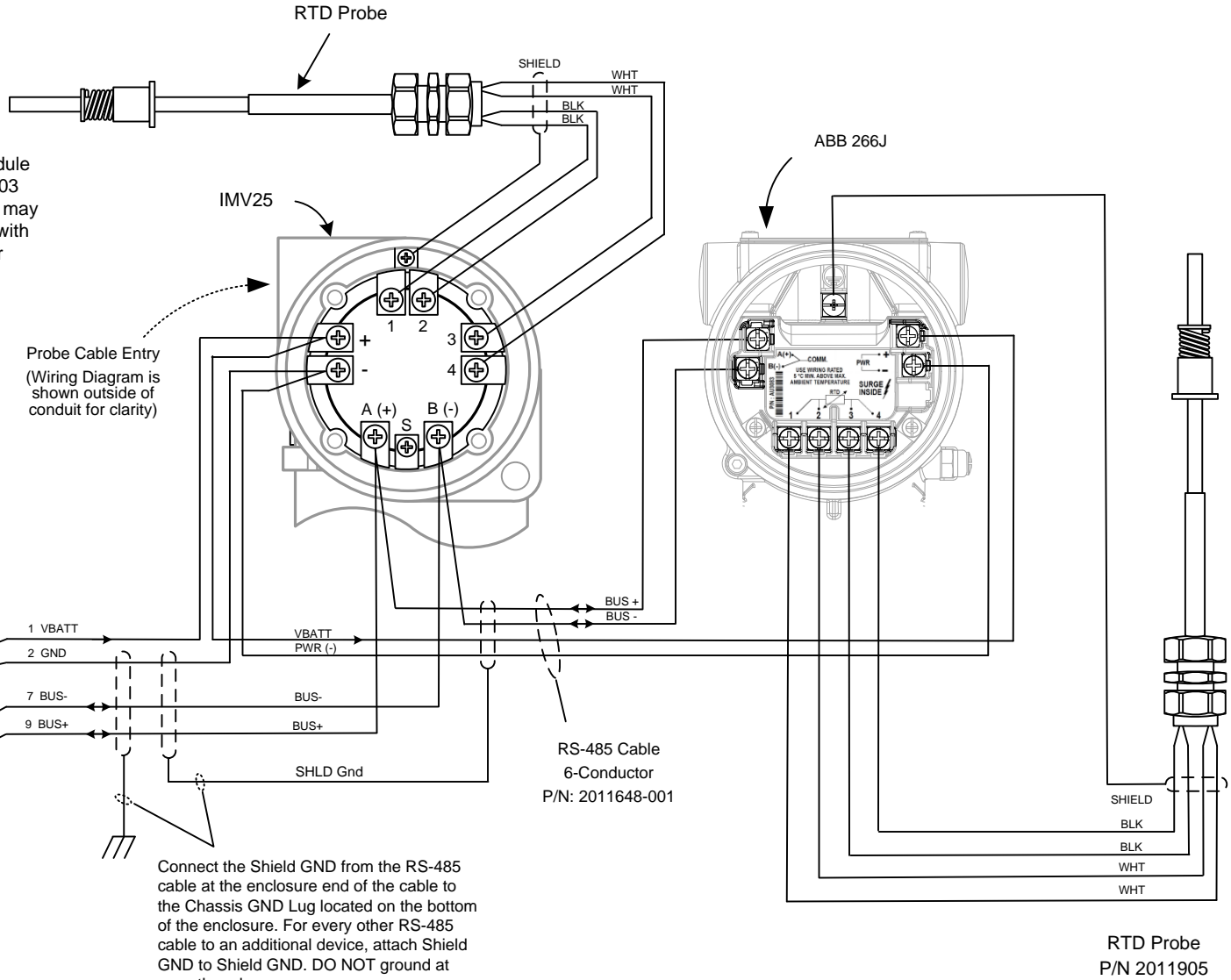
RS-485 Communications Module  
Totalflow P/N 2015193-002/003  
In this configuration, COMM1 may not be used to communicate with other devices. To attach other devices, such as other flow computers, use COMM2

To terminate the Bus on the XRC Board, jumper J10 Pin-1 to Pin-2

J10



XRC<sup>G4</sup> (2103329) Board



REF: N/A

	TOTALFLOW	ACTION	DOC TYPE	TITLE	DWG NO.	REV	SHEET
	Products	D35508	UD	XRC <sup>G4</sup> (2103329 BD) COMM2 (RS485) TO IMV25 & ABB 266J W/RTD	2105116	AB	1 OF 1