

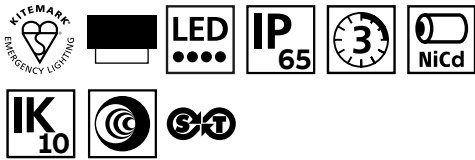
Day-Lite Ex-cel

Practical & durable



Surface mounted luminaire

- Sturdy, general use luminaire with screw-fix diffuser
- Light optimised diffuser
- LED version is suitable for fluorescent replacement requirements
- Complies to IEC 60598.2.22



Luminaire

Order code	Description	Input voltage	Lamp type	Lamp output (lm)	Power consumption (VA/W)	Operation / duration (hrs)	Environment temp. (°C)	Weight (kg)
CTXXW3LS1	LED 2W M3 DAYLITE WHT/OPL CT	220-240 AC 50/60Hz	1 x LED 2W	214	6.1 / 3.9	3	0-30	0.9
CTXXW3LS11	LED 2W M3 DAYLITE WHT/CLR CT	220-240 AC 50/60Hz	1 x LED 2W	251	6.1 / 3.9	3	0-30	0.9
LTCXXW1LS1	LED 2W LTC DAYLITE WHT/OPL	220-240 AC 50/60Hz	1 x LED 2W	214	4.6 / 4.4	230V	0-40	0.7
LTCXXW1LS11	LED 2W LTC DAYLITE WHT/CLR	220-240 AC 50/60Hz	1 x LED 2W	251	4.6 / 4.4	230V	0-40	0.7
STXXW3LS1	LED 2W M3 DAYLITE WHT/OPL SLFTST	220-240 AC 50/60Hz	1 x LED 2W	214	6.1 / 3.9	3	0-30	0.8
STXXW3LS11	LED 2W M3 DAYLITE WHT/CLR SLFTST	220-240 AC 50/60Hz	1 x LED 2W	251	6.1 / 3.9	3	0-30	0.8
XW8LS1	LED 1W 50V ACDC DAYLITE WHT/OPL	24-50 AC/DC 0-60Hz	1 x LED 1W	214	3.4 / 2.1	Central Battery	0-40	0.6
XW8LS11	LED 1W 50V ACDC DAYLITE WHT/CLR	24-50 AC/DC 0-60Hz	1 x LED 1W	251	3.4 / 2.1	Central Battery	0-40	0.6
XXW1LS1	LED 2W HF DAYLITE WHT/OPL	110-230 AC/DC 0-60Hz	1 x LED 2W	214	3.4 / 2.1	230V	0-40	0.6
XXW1LS11	LED 2W HF DAYLITE WHT/CLR	110-230 AC/DC 0-60Hz	1 x LED 2W	251	3.4 / 2.1	230V	0-40	0.6

Legends

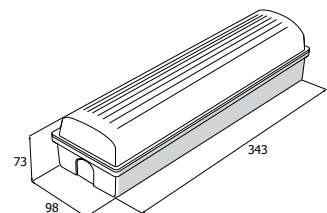
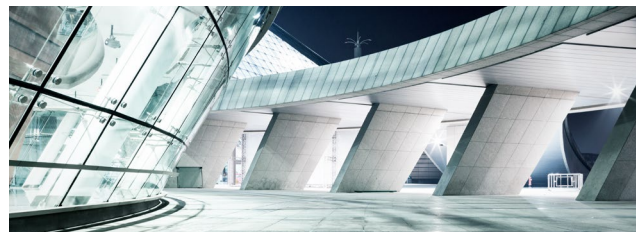
Part No.	Pictogram
RSEN2X	
RSEN3X	
RSEN6X	
RSEN5X	
Arabic legend format	
RSB1X	

ISO 7010 pictogram legends are shown. Euro format & Special legends are available to order see pages 139-141

Accessories

Order code	Description
XTR	Semi-recessing bezel in white

See Silver-Scape (pages 50-51) for recessed version



Cable entry via BESA on rear and 20 mm drill holes on rear and ends of unit. Ceiling cutout 342 mm x 95 mm when semi-recessing.