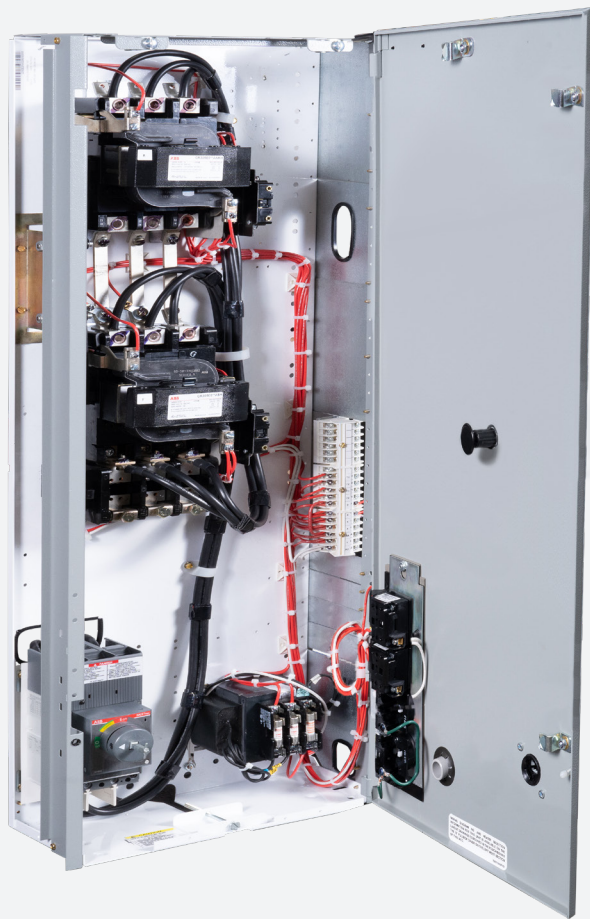


SELECTION GUIDE

Fastrac™ program

Motor control centers



Fastrac™ MCC unit selection guide

This document defines standard MCC starter and feeder units, including full voltage, reversing and non-reversing, two-speed single-winding and two-speed two-winding starters, in sizes 1–5.

- Evolution E9000 (compatible with ReliaGear LV MCC)
- 8000 (compatible with 2700, 7700 and Spectra LV MCC)

For additional details, see the BuyLog, Section 15:

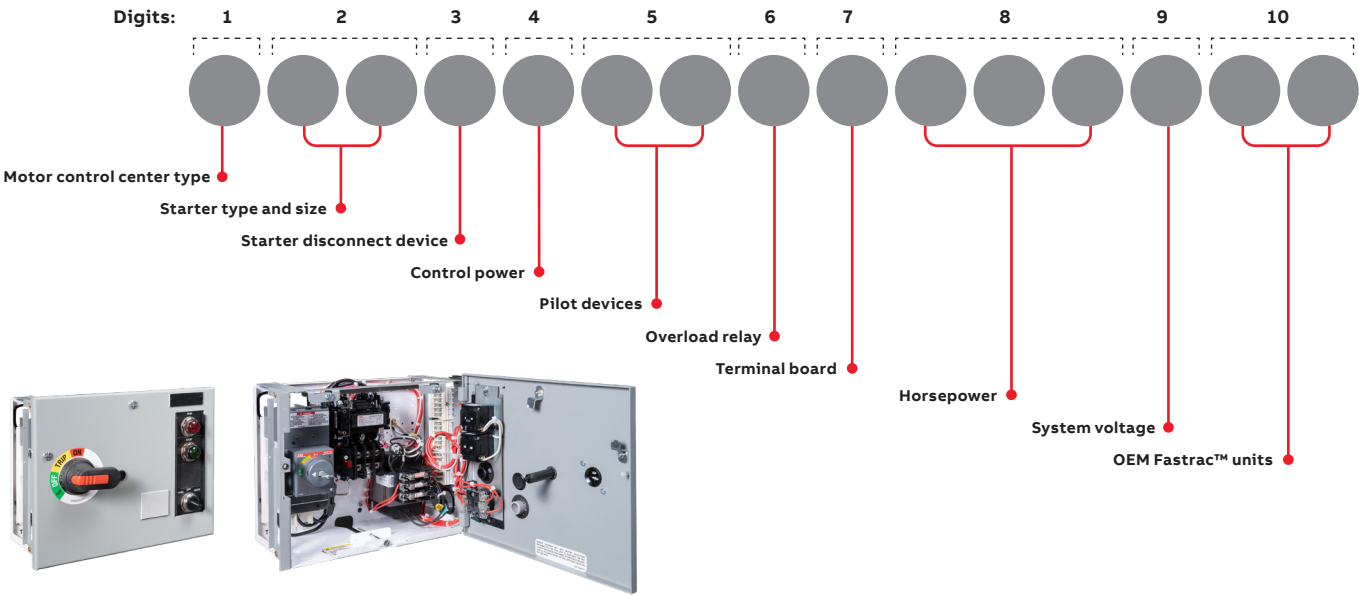
https://electrification.us.abb.com/buylog_pdf

Quotations are available for other MCC units, which must be requisition engineered.



Selection of starter units

Selection product number:



Detailed use of each digit in the part number is defined below.

1 – Motor control center type

Select option value for the MCC from the table below.

MCC type	Option value
8000	M
Evolution E9000	E

2 – Starter type and size

Select the option value for the desired starter type from the table below.

Starter type	Size	Option value
FVNR	1	A 1
	2	A 2
	3	A 3
	4	A 4
	5	A 5
FVR	1	B 1
	2	B 2
	3	B 3
	4	B 4
2S1W	1	C 1
	2	C 2
	3	C 3
	4	C 4
2S2W	1	D 1
	2	D 2
	3	D 3
	4	D 4

Notes:
- Size 5 FVNR is only available in E9000, not 8000.

3 — Starter disconnect device

Select the option value for the desired starter disconnect from the table below.

Disconnect device	Option value	Starter size				
		1	2	3	4	5
FSW-R	F	•	•	•		
FSW-J	R	•	•	•		
Spectra – 65 mag only	U	•	•	•	•	•
Spectra – 100 mag only	V	•	•	•	•	•
Spectra – 65 thermal mag	W	•	•	•	•	•
Spectra – 100 thermal mag	X	•	•	•	•	•
Tmax® XT2H – 65 TMA/F or Ekip I	0	•	•	•		
Tmax® XT2L – 100 TMA/F or Ekip I	1	•	•	•		
Tmax® XT2N – 65 TMA/F	2	•	•	•		
Tmax® XT2S – 100 TMA/F	3	•	•	•		
Tmax® XT4H – 65 TMA	4				•	
Tmax® XT4L – 100 TMA	5				•	
Tmax® XT4N – 65 TMA	6				•	
Tmax® XT4S – 100 TMA	7				•	

Notes:

- FSW (fusible switch) options are available for 8000 and E9000 up to 200 A
- Spectra circuit breaker options are only available for E9000, not 8000
- Tmax® XT circuit breaker options are only available for 8000, not E9000
- Spectra 65 is only rated to 25 kA at 575 V
- Ekip I breakers only offered through Fastrac program for limited HPs, in size 1 applications

4 — Control power

Standard control power transformer (CPT) ratings are adequate to handle the starter-coil current and three pilot lights. If additional burdens are expected, larger transformers should be specified from among those shown in the first table below. From the second table below, select the control power desired.

Starter size	CPT minimum VA	Oversize VA
1	60	150
2	150	-
3	300	-
4	300	-
5	100	-

Notes:

- Size 5 starter only available for E9000, not 8000
- For 380 V units, all CPTs rated at 250 VA

Control power (120 VAC)	Option value	Starter size				
		1	2	3	4	5
Standard CPT	1	•	•	•	•	•
Common / separate source	5	•	•	•	•	•

5 — Pilot devices

Select the option value for the desired pilot devices by starter type from the table below.

Starter type	Pilot device	Option value
FVNR	None	N N
	Red light standard	O E
	Red light push-to-test	O F
	Red/green light standard	O S
	Red/green light push-to-test	O T
	HOA switch	A N
	HOA switch, red light standard	O B
	HOA switch, red light push-to-test	O P
	HOA switch, red/green light standard	O C
	HOA switch, red/green light push-to-test	O Q
	HOA switch, start/stop PB, red light standard	O D
	HOA switch, start/stop PB, red light push-to-test	O R
	Start/stop PB	B N
	Start/stop PB, red light standard	P B
	Start/stop PB, red light push-to-test	P P
	Start/stop PB, red/green light standard	P C
	Start/stop PB, red/green light push-to-test	P Q
	On/off switch	G N
	On/off switch, red light standard	U B
	On/off switch, red light push-to-test	U P
	On/off switch, red/green light standard	U C
	On/off switch, red/green light push-to-test	U Q
FVR	None	N N
	Red/green light standard	O E
	Red/green light push-to-test	O R
	Red/amber light standard	O F
	Red/amber light push-to-test	O S
	Red/amber/green light standard	O G
	Red/amber/green light push-to-test	O T
	Forward/rev/stop PB	C N
	Forward/rev/stop PB, red/amber light standard	O B
	Forward/rev/stop PB, red/amber light push-to-test	O P
	Forward/rev/stop PB, red/amber/green light standard	O C
	Forward/rev/stop PB, red/amber/green light push-to-test	O Q
	Forward/off/rev switch	D N
	Forward/off/rev switch, red light standard	R B
	Forward/off/rev switch, red light push-to-test	R P
	Forward/off/rev switch, red/green light standard	R C
	Forward/off/rev switch, red/green light push-to-test	R Q

Selection of starter units

5 – Pilot devices (cont.)

Starter type	Pilot device	Option value
2S1W or 2S2W	None	N N
	Red/amber light standard	S F
	Red/amber light push-to-test	S S
	Red/amber/green light standard	S G
	Red/amber/green light push-to-test	S T
	Fast/slow/stop PB	E N
	Fast/slow/stop PB, red/amber light standard	S B
	Fast/slow/stop PB, red/amber light push-to-test	S P
	Fast/slow/stop PB, red/amber/green light standard	S C
	Fast/slow/stop PB, red/amber/green light push-to-test	S Q
	Fast/slow/off/auto switch	F N
	Fast/slow/off/auto switch, red/amber light standard	T L
	Fast/slow/off/auto switch, red/amber light push-to-test	T P
	Fast/slow/off/auto switch, red/amber/green light standard	T C
	Fast/slow/off/auto switch, red/amber/green light push-to-test	T Q

Notes:

- All control devices, including lights, pushbuttons and switches are ABB A3 devices.
- All lights are LED devices.

6 – Overload relay

Select overload relay option value from the table below.

Relay type	Option value
Standard	1
Ambient-compensated	2
Solid-state	3

7 – Terminal board

Select control disconnect terminal board option value from the table below.

Control disconnect terminal board	Option value
Standard high-density	H

8 – Horsepower

Select horsepower option value from the table below. Note that some product number digits consist of a decimal point.

Horsepower	Option value	Horsepower	Option value
¼	. 2 5	15	0 1 5
½	. 3 3	20	0 2 0
¾	. 3 8	25	0 2 5
½	. 5 0	30	0 3 0
¾	. 7 5	40	0 4 0
1	0 0 1	50	0 5 0
1½	0 0 2	60	0 6 0
2	0 0 2	75	0 7 5
3	0 0 3	100	1 0 0
5	0 0 5	125	1 2 5
7½	7 . 5	150	1 5 0
10	0 1 0	200	2 0 0

Note:

¼, ½, ¾, 125 HP, 150 HP and 200 HP are only available for E9000, not 8000.

9 – System voltage

Select system voltage option value from the table below.

Voltage	Option value
480 V, 60 Hz	A
208 V, 60 Hz	B
240 V, 60 Hz	C
575 V, 60 Hz	D
380 V, 50 Hz	E

Note:

If a Tmax® XT circuit breaker is selected for 8000 in step 3, option D above is not available.

10 – OEM Fastrac™ units

Fastrac units designed for OEM use are engineered and built with the same components and layout as the standard Fastrac units. Power wiring is provided. However, to allow the maximum flexibility for OEM users, no control wiring is provided.

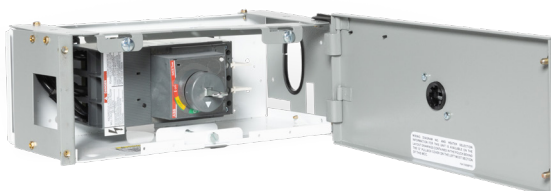
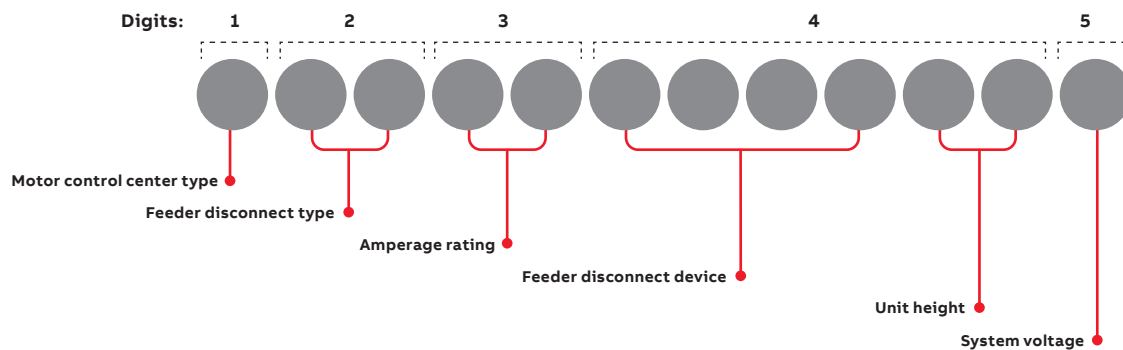
Part numbers are the same as other Fastrac units with the addition of two additional suffix letters, XX.

Example

Standard Fastrac unit	EA1U1AB1H010A
OEM Fastrac unit	EA1U1AB1H010AXX

Selection of feeder units

Selection product number:



Detailed use of each digit in the part number is defined below.

For FSW feeders, optional heights are not available.

Omit the 4A digits in the part number.

1 – Motor control center type

Select option value for the MCC from the table below.

MCC type	Option value
8000	M
Evolution E9000	E

2 – Feeder disconnect type

Select the option value for the desired disconnect type from the table below.

Type	Voltage	Option value
Circuit breaker	All	F B
Fusible switch – R	208/240 V	F R
Fusible switch – R	480/600 V	F S
Fusible switch – J	480/600 V	F J

3 – Amperage rating

Select option value for the desired amperage rating from the table below.

Amperage rating	Option value	Amperage rating	Option value
15	0 1 5	80	0 8 0
20	0 2 0	90	0 9 0
25	0 2 5	100	1 0 0
30	0 3 0	110	1 1 0
35	0 3 5	125	1 2 5
40	0 4 0	150	1 5 0
45	0 4 5	175	1 7 5
50	0 5 0	200	2 0 0
60	0 6 0	225	2 2 5
70	0 7 0	250	2 5 0

Notes:

- For fusible switches, only amperage ratings up to 200 A are available.
- Amperage rating of 45 A is only available in E9000, not 8000.

Selection of feeder units

4 – Feeder disconnect device

Select option value for the desired feeder device from the table below.

Device	Maximum amperage rating	Short circuit rating in kA			Min. height (inches)	Option value
		at 240 V	at 480 V	at 600 V		
FSW	30	100	100	100	6	Q M R 3
	60	100	100	100	6	Q M R 6
	100	100	100	-	12	Q M R 1
	200	100	100	100	24	Q M R 2
SELT	150	65	65	25	6	S E L T
SEPT	150	100	100	-	6	S E P T
SFLT	250	65	65	25	12	S F L T
SFPT	250	100	100	-	12	S F P T
Tmax® XT2	125	100	-	-	6	X T 2 S
		65	-	-	6	X T 2 N
		-	100	-	6	X T 2 L
		-	65	-	6	X T 2 H
Tmax® XT4	250	100	-	-	6	X T 4 S
		65	-	-	6	X T 4 N
		n/a	100	-	6	X T 4 L
		n/a	65	-	6	X T 4 H

Notes:

- QMR heights in table are for 8000. For E9000, height is 12" up to 60 A, 24" for up to 100 A and 30" for up to 200 A.
- Spectra circuit breaker options are only available for E9000.
- Tmax® XT circuit breaker options are only available for 8000.
- Note: Minimum height for Tmax® XT up to 125 A is 6". Above 125 A, minimum height is 18".

4A – Unit height

Select the option value for optional feeder height from the table below.

Height in inches	Option value
6	0 6
12	1 2
18	1 8
24	2 4
30	3 0
36	3 6
42	4 2
48	4 8

Notes:

- For Spectra feeders rated to 150 A, optional heights up to 36" are available.
- For Spectra feeders up to 250 A, optional heights up to 42" are available.
- For Tmax® XT2 feeders, optional heights up to 36" are available.
- For Tmax® XT4 feeders, optional heights up to 48" are available.
- For FSW feeders, optional heights are not available. Omit the 4A digits in the part number.

5 – System voltage

Select system voltage option value from the table below.

Voltage	Option value
480 V, 60 Hz	A
208 V, 60 Hz	B
240 V, 60 Hz	C
575 V, 60 Hz	D
380 V, 50 Hz	E

Notes:

- If a Tmax® XT circuit breaker is selected for 8000 in step 3, option D above is not available.

Door and shelf filler kits

Door and shelf filler kits

Product line	Height (inches)	Part number
8000	6	204B4145AMG1
	12	204B4145AMG2
	18	204B4145AMG3
	24	204B4145AMG4
	30	204B4145AMG5
	36	204B4145AMG6
	42	204B4145AMG7
	48	204B4145AMG8
E9000	6	EK06
	12	EK12



Electrification Service

305 Gregson Drive
Cary, NC 27511

<https://electrification.us.abb.com/services>

We reserve the right to make technical changes or modify the contents of this document without prior notice. With regard to purchase orders, the agreed particulars shall prevail. ABB Inc. does not accept any responsibility whatsoever for potential errors or possible lack of information in this document.

We reserve all rights in this document and in the subject matter and illustrations contained therein. Any reproduction, disclosure to third parties or utilization of its contents – in whole or in parts – is forbidden without prior written consent of ABB Inc. Copyright© 2023 ABB
All rights reserved