



Product Catalogue

Earthing & lightning protection

Short form product catalogue

furse 

ABB

Earthing & lightning protection

Short form product catalogue

1

[Introduction](#)

2

[Conductors](#)

3

[Conductor network](#)

4

[Earth electrodes](#)

5

[Earth bonds & clamps](#)

6

[Earth bars](#)

Furse overview

Our reach & expertise

With over 120 years of experience Furse provide world leading Earthing, Lightning and Electronic Systems Protection solutions. From our own designed and manufactured products, through to risk assessment and systems design advice, Furse offer a renowned Total Solution for earthing and lightning protection.

Furse was acquired by the ABB Group in 2012, and through the wider distributor network they offer, the Furse brand has now become established as a world leader in earthing and lightning protection, with our products specified and installed in many prestigious projects globally.

The combined expertise of Furse and the experience within the electrical sector ABB provide, allows us to share the knowledge we hold in key industry sectors with our clients. In turn this promotes properly informed decision making on the best earthing and lightning protection solution to suit your needs.

Why use Furse?

Expertise

Specialist advice from our fully qualified technical engineers - focusing on your earthing and lightning protection issues and concerns.

Experience

Providing the optimum design - one that doesn't use more material than is necessary, saving you money.

Products

Our knowledge of the latest products ensures a tailored design that can be installed using the most appropriate and up-to-date products.

Technical

With over 120 years accumulated knowledge of developing earthing and lightning protection solutions, we provide design systems to any recognised standard.

Customer service

Our sales and technical teams are ready to assist with all your earthing and lightning protection needs.

Knowledge

Our knowledge of the latest standards ensures designs and selected products comply with the latest IEC/BS EN/NFPA/UL standards.



Earthing & lightning protection

A real & significant threat

1

Lightning is one of nature's most powerful and destructive phenomena. Lightning strikes present a real and significant threat to life, to the structures in which we live and work, and to the electronic systems which support us

Lightning contains awesome amounts of electrical energy. Lightning discharges have been measured from several thousand to over 200,000 Amps (enough to light half a million 100 Watt bulbs) and even though of a very short duration, can cause tremendous damage and destruction.

The consequences of lightning can be devastating:

- Direct lightning strikes damage structures, and create fire, explosion and electric shock hazards.
- Indirect lightning (up to a kilometre away) creates transient overvoltages which degrade electronic systems and disrupt essential services.

Secondary effects of lightning

The effects of a direct strike are obvious and immediately apparent - buildings damaged, trees blown apart, personal injuries and even loss of life.

However, the secondary effects of lightning - the short duration, high voltage spikes called transient overvoltages - can, and do, cause equally catastrophic, if less visually obvious, damage to electronic systems within structures.

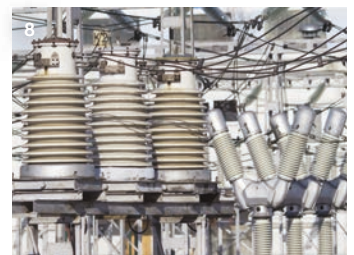
The need for a Total Solution

Lightning protection throughout the world is now governed by National and International standards which stress the need for a comprehensive solution. Simply put, a structural lightning protection system cannot and will not protect electronic systems from lightning currents and transient overvoltages, that's why we advocate a Total Solution to earthing and lightning protection. This approach to lightning protection is now fully endorsed by the IEC/BS EN 62305, as well as NFPA 780 standards.

Therefore the Furse approach delivers effective life safety, together with long lasting, reliable protection of a structure and the electronic systems within. We believe the Furse Total Solution is the best available solution for achieving effective, dependable, long term lightning protection and earthing.

Protecting against the consequences of lightning is now of paramount importance in any building design, our Total Solution covers a wide range of sectors, for which we have tailored products and services.

1 Datacentres | 2 Trackside substations | 3 Wind farms | 4 Oil & Gas | 5 Water treatment | 6 Telecommunications | 7 Healthcare | 8 Substations



Conductors

Bare conductors, bare stranded & tinned conductors



Bare copper tape

Part no.	Conductor size (X x Y) (mm)
TC005	12.5 x 1.5
TC010	12.5 x 3
TC015	20 x 1.5
TC020	20 x 3
TC020/100	20 x 3
TC025	25 x 1.5
TC026	25 x 2
TC030	25 x 3
TC030/50	25 x 3
TC030-UL	1" x 1/8"
TC035	25 x 4
TC040	25 x 6
TC040-UL	1" x 1/4"
TC039	30 x 2
TC042	30 x 3
TC044	30 x 4
TC043	30 x 5
TC045	31 x 3
TC048	31.5 x 4
TC050	31 x 6
TC055	38 x 3
TC060-FU	38 x 5
TC065	38 x 6
TC067	40 x 3
TC066	40 x 4
TC071	40 x 5
TC068	40 x 6
TC069	40 x 6.3
TC070	50 x 3
TC075	50 x 4
TC078	50 x 5
TC080	50 x 6
TC082	50 x 6.3
TC090	50 x 7



Bare stranded copper cable

Part no.	Cross sectional area (mm)
Soft drawn stranded copper cable	
CB006	6
CB016	16
CB025	25
CB035	35
CB050-FU	50
CB070	70
CB095	95
CB120	120
CB150-FU	150
CB185	185
CB240	240
CB300-FU	300
CB400-FU	400
Tinned soft drawn stranded copper cable	
CB070-T	70
Hard drawn stranded copper cable	
CB071	70



Bare solid circular

Part no.	Diameter (A) (mm)
Copper conductor	
CD035	Ø 8
Aluminium conductor	
CD080	Ø 8



Tinned copper tape

Part no.	Conductor size (X x Y) (mm)
TC225-FU	12.5 x 1.5
TC230	25 x 3
TC230-UL	1" x 1/8"
TC239	30 x 2
TC240	25 x 6
TC245	31 x 3
TC260	38 x 5
TC280	50 x 6



Bare aluminium tape

Part no.	Conductor size (X x Y) (mm)
TA005	12.5 x 1.5
TA020	20 x 3
TA030	25 x 3
TA042	30 x 3
TA040	25 x 6
TA068	40 x 6
TA080	50 x 6

Conductors

Hand drawn bar, PVC & LSOH covered conductors

2



Hard drawn copper bar

Part no.	Overall nominal size (X x Y) (mm)
Bare hard drawn bar	
BA205	25 x 3
BA210	25 x 6
BA225	38 x 6
BA230	50 x 6
BA235	50 x 10
BA240	75 x 6
BA250-FU	100 x 6



PVC covered aluminium tape

Part no.	Conductor Size(X x Y) (mm)	Colour range
TA100	12.5 x 1.5	Black
TA104	20 x 3	Black
TA105	25 x 3	Black
TA110	25 x 3	Green
TA115	25 x 3	Grey
TA120	25 x 3	Stone
TA125	25 x 3	White
TC130/N	25 x 3	Brown



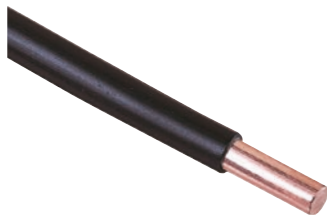
PVC covered copper tape

Part no.	Conductor Size(X x Y) (mm)	Colour range
TC100	12.5 x 1.5	Black
TC105/N	25 x 3	Black
TC110/N	25 x 3	Green
TC110/50	25 x 3	Green
TC115/N	25 x 3	Grey
TC120/N	25 x 3	Stone
TC125/N	25 x 3	White
TC130/N	25 x 3	Brown
TC140/N	25 x 6	Green
TC145/N	50 x 6	Green



LSOH covered copper tape

Part no.	Conductor Size(X x Y) (mm)	Colour range
TC910/N	25 x 3	Green
TC910/50	25 x 3	Green
TC940/N	25 x 6	Green
TC980/N	50 x 6	Green



PVC covered copper solid circular

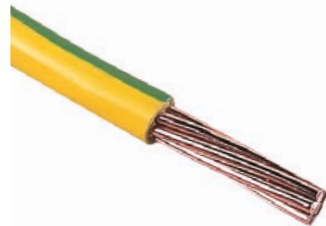
Part no.	Colour range
CD036	Black
CD038	Grey
CD039	Stone
CD040	White
CD041	Brown

NB all conductor diameters 8 mm



Green & yellow PVC insulated copper tape

Part no.	Conductor Size (X x Y) (mm)
TC111/N	25 x 3



Green & yellow PVC insulated stranded copper cable

Part no.	Cross-sectional area (mm ²)
CC016	16
CC025	25
CC035	35
CC050	50
CC070	70
CC095	95
CC120-FU	120
CC150-FU	150
CC185	185
CC240	240
CC300	300
CC400-FU	400



PVC covered aluminium solid circular

Part no.	Colour range
CD081	Black
CD083	Grey
CD084	Stone
CD085	White
CD086	Brown

NB all conductor diameters 8 mm

Conductor network

Metallic conductor clips



Swing lid DC tape clip

Part no.	Conductor size (mm)
For use with bare copper	
CP210-H	25 x 3
CP220-H	25 x 6
For use with bare aluminium	
CP110-H	25 x 3
CP120-H	25 x 6



Adjustable DC tape clip

Part no.	Conductor size (mm)
For use with bare copper	
CP230-H	31 x 3 and 31 x 6
CP240-H	38 x 3, 38 x 6 and 40 x 6
CP260-H	50 x 3 and 50 x 6



Adjustable DC tape clip

Part no.	Conductor size (mm)
For use with bare copper	
CP205	20 x 3
CP216	25 x 4
CP227	30 x 5
CP245	38 x 5
CP241	40 x 4
CP256	50 x 4
For use with PVC covered copper	
CP215-H	25 x 3
CP225	25 x 6
CP265	50 x 6
CP256	50 x 4
For use with lead covered copper	
CP305	25 x 3
For use with bare aluminium	
CP105	20 x 3
CP125	50 x 6
For use with PVC covered aluminium	
CP115	25 x 3
CP130	50 x 6



One hole cable clip

Part no.	Conductor size (mm)	Conduvtor material
For use with solid circular conductor		
CP905	Ø 8	Copper
CP925	Ø 8	Aluminium
CP915	Ø 10*	Copper
CP935	Ø 10*	Aluminium
For use with stranded conductor		
CP910	50 mm ²	Copper
CP915	70 mm ²	Copper
CP920	95 mm ²	Copper

*PVC covered 8 mm conductor



Heavy duty cast cable saddle

Part no.	Conductor size (mm)	Conduvtor material
For use with solid circular conductor		
CP805	Ø 8	Copper
CP806	Ø 8	Aluminium
CP815	Ø 10*	Copper
CP816	Ø 10*	Aluminium
For use with stranded conductor		
CP810	50 mm ²	Copper
CP815	70 mm ²	Copper
CP835	95 mm ²	Copper
CP855	120 mm ²	Copper

*PVC covered 8 mm conductor



Non-metallic DC tape clip

Part no.	Conductor size (mm)	Colour
For use with bare tape		
CP005	20 x 3	Brown
CP010	20 x 3	Grey
CP015	25 x 3	Brown
CP020	25 x 3	Grey
CP060*	38 x 5	Brown
CP065*	50 x 6	Brown
For use with PVC covered tape		
CP025	25 x 3	Brown
CP030	25 x 3	Black
CP035	25 x 3	Green
CP040	25 x 3	Grey
CP045	25 x 3	Stone
CP050	25 x 3	White



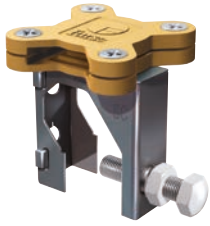
Tape clip

Part no.	Conductor size (mm)
For use with bare copper	
CP510	20 x 3
CP515	25 x 3
For use with bare aluminium	
CP405	20 x 3
CP410	25 x 3
CP415	25 x 6
For use with PVC covered tape	
CP517	25 x 3

Conductor network

Standing seam roof fixings, holdfasts, puddle flange & conductor clamps

3



Standing seam roof fixing with square tape clamp

Part no.	Conductor size (mm)	Material
SC105-H	25 x 3	Copper
SC005-H	25 x 3	Aluminium



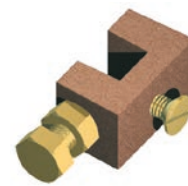
Slate holdfast with non-metallic push-in clip

Part no.	Conductor size (mm)	DC Clip Colour
HF176	Ø 8	Brown
HF191	Ø 8	Grey



Standing seam roof fixing with non-metallic DC tape clip

Part no.	Conductor size (mm)	Colour	Material	Weight each (kg)
Non-metallic clip for use with bare tape				
SC015	25 x 3	Brown	Copper	0.076
SC020	25 x 3	Grey	Aluminium	0.076



Glazing bar holdfast

Part no.	Maximum glazing bar width (mm)	Conductor Material
HF705	12	Copper
HF710	12	Aluminium

Metallic clip for use with bare tape				
SC210-H	25 x 3	-	Copper	0.08
SC110-H	25 x 3	-	Aluminium	0.07

Metallic clip for use with PVC covered tape				
SC215-H	25 x 3	-	Copper	0.09



Back plate holdfast stem

Part no.	Conductor material
HF320	Copper
HF325-FU	Aluminium



Pyramid flange

Part no.	Conductor Material
PF105	Copper
PF005	Aluminium



Square tape clamp

Part no.	Conductor size (mm)	Conductor material
CT105-H	25 x 3	Copper
CT110-H	25 x 6	Copper
CT115-H	50 x 6	Copper
CT005-H	25 x 3	Aluminium
CT010-H	25 x 6	Aluminium



Pyramid holdfast

Part no.	Conductor size (mm)
HF975	Ø 8 mm solid circular



Slate holdfast with non-metallic DC tape clip

Part no.	Conductor size (mm)	DC Clip Colour
For use with bare tape		
HF015	25 x 3	Brown
HF020	25 x 3	Grey
For use with PVC covered tape		
HF025	25 x 3	Brown
HF030	25 x 3	Black
HF040	25 x 3	Grey
HF045	25 x 3	Stone



Crossover tape clamp

Part no.	Conductor size (mm)	Conductor material
CX105-H	25 x 3	Copper
CX005-H	25 x 3	Aluminium



Cable to tape square clamp

Part no.	Conductor size (mm)	Conductor material
CT125	25 x 3 mm to 50 mm ²	Copper
CT130	25 x 3 mm to 70 mm ²	Copper
CT135	25 x 3 mm to 95 mm ²	Copper

Conductor network

Conductor clamps, bimetallic connectors, expansion braid bond & oxide inhibitor



Square stranded cable clamp

Part no.	Conductor size (mm)	Conductor material
CR810	50	Copper
CR815	70	Copper
CR820	95	Copper



Test clamp

Part no.	Conductor size (mm)	Conductor material
CN305	Ø 8	Copper
CN310	Ø 8	Aluminium



Mini square clamp

Part no.	Conductor size (mm)	Conductor material
CS605	Ø 8	Copper
CS610	Ø 8	Aluminium



Sqaure test clamp

Part no.	Conductor size (mm)	Conductor material
CR855	50	Copper
CR860	70	Copper
CR865	95	Copper



Tee clamp

Part no.	Conductor size (mm)	Conductor material
CS505	Ø 8	Copper
CS510	Ø 8	Aluminium



Bimetallic connector

Part no.	Conductor size (mm)
CN910	25 x 3 mm aluminium tape to 25 x 3 mm copper tape
CN910-UL	1½" x ⅛" aluminium tape to 1" x ⅛" copper tape
CN915	8 mm Ø aluminium conductor to 8 mm Ø copper conductor
CN920	8 mm Ø aluminium conductor to 25 x 3 mm copper tape
CN925	25 x 3 mm aluminium tape to 25 x 3 mm copper tape



Jointing clamp

Part no.	Conductor size (mm)	Conductor material
CS405	Ø 8	Copper
CS410	Ø 8	Aluminium



Test / Junction clamp

Part no.	Conductor size (mm)	Conductor material
CN105-H	26 x 8	Copper
CN005*	26 x 8	Aluminium



Oxide inhibiting compound

Part no.	Description
CM005	Plastic 8 oz bottle



Sqaure test clamp

Part no.	Description	Conductor material
BN101	Single length	Copper
BN001	Single length	Aluminium
BN102	Cross-over	Copper
BN002	Cross-over	Aluminium



Plate type test clamp

Part no.	Conductor size (mm)	Conductor material
CT405	26 x 12 max	Copper



Screwdown test clamp

Part no.	Conductor size (mm)	Conductor material
CT305	26 x 8 max	Copper

Earth electrodes

Earth rods, seal, hammer, & rig

4



Threaded copperbond earth rod

Part no.	Nominal diameter (")	Length (mm)
RB105	Ø ½	1200
RB110	Ø ½	1500
RB115	Ø ½	1800
RB125	Ø ½	2400
RB205-FU	Ø ⅝	1200
RB210	Ø ⅝	1500
RB215	Ø ⅝	1800
RB220-FU	Ø ⅝	2100
RB225	Ø ⅝	2400
RB235	Ø ⅝	3000
RB305	Ø ¾	1200
RB310	Ø ¾	1500
RB315	Ø ¾	1800
RB320-FU	Ø ¾	2100
RB325	Ø ¾	2400
RB335	Ø ¾	3000

Fittings

Part no.	Type (")
CG170	½ Coupling
CG270	⅝ Coupling
CG370	¾ Coupling
ST100	½ Driving stud
ST200	⅝ Driving stud
ST300	¾ Driving stud

Earth rod seal

Part no.	Type
----------	------

Earth rod seal assembly

ES300	Earth rod seal and membrane seal
-------	----------------------------------

Earth rod seal pack

ES300-12	Seal pack for ½" (Ø 12.7 mm) Copperbond rod
ES300-58	Seal pack for ⅝" (Ø 14.2 mm) Copperbond rod
ES300-34	Seal pack for ¾" (Ø 17.2 mm) Copperbond rod
ES300-15	Seal pack for Ø 15 mm solid copper rod
ES300-16	Seal pack for Ø 16 mm solid copper rod
ES300-20	Seal pack for Ø 20 mm solid copper rod

Earth rod seal tube

ES310-03	Seal tube, 300 mm length
ES310-05	Seal tube, 500 mm length
ES310-10	Seal tube, 1000 mm length
ES310-15	Seal tube, 1500 mm length
ES310-20	Seal tube, 2000 mm length
ES310-30	Seal tube, 3000 mm length

Accessory spanner set

ES320	Membrane seal torque spanner set
-------	----------------------------------



Unthreaded copperbond earth rod

Part no.	Diameter (mm)	Length (mm)
RB005	Ø 9.0	1200
RB103	Ø 12.7	1200
RB107	Ø 12.7	1500
RB116	Ø 12.7	1800
RB126	Ø 12.7	2400
RB203	Ø 14.2	1200
RB213	Ø 14.2	1500
RB216	Ø 14.2	1800
RB217	Ø 14.2	2000
RB223	Ø 14.2	2100
RB226	Ø 14.2	2400
RB236	Ø 14.2	3000
RB306	Ø 17.2	1200
RB313	Ø 17.2	1500
RB316	Ø 17.2	1800
RB317	Ø 17.2	2000
RB323	Ø 17.2	2100
RB326	Ø 17.2	2400
RB336	Ø 17.2	3000

Fittings

Part no.	Type
CG177	12.7 mm Coupling
CG277	14.2 mm Coupling
CG377	17.2 mm Coupling
ST107	12.7 mm Driving head
ST207	14.2 mm Driving head
ST307	17.2 mm Driving head

Earth rod hammer

Part no.	Description
HM005	Atlas Copco Cobra TT petrol driven hammer
HM010	Earth rod adapter (Suitable for ⅝" earth rods)



Hammer rig

Part no.	Description
HM105	Hammer rig

Earth electrodes

Earth rods, inspection pits, plate, lattice, backfill materials & resistance test equipment



Solid copper and stainless steel earth rod

Part no.	Diameter (mm)	Length (mm)
Solid copper rod		
RC010	Ø 15	1200
RC011	Ø 15	1500
RC012	Ø 15	3000
RC015	Ø 20	1200
RC016	Ø 20	1500
RC017	Ø 20	3000
Stainless steel rod		
RS005	Ø 16	1200
RS011	Ø 16	1500
RS012	Ø 16	3000
RS016	Ø 20	1500
RS017	Ø 20	3000

Fittings

Part no.	Type
ST010	15 mm hardened steel driving stud for copper/stainless steel rod
ST015	20 mm hardened steel driving stud for copper/stainless steel rod
CG013	Coupling dowel for 15 mm & 20 mm copper rod
CG005	Coupling dowel for 16 mm & 20 mm stainless steel rod
SP010	15 mm hardened steel spike for copper/stainless steel rod
SP015	20 mm hardened steel spike for copper/stainless steel rod

UL Kits

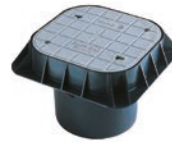
Part no.	Diameter	Length
Stainless steel rod		
RC010-KIT	Ø 15 mm	8 ft (2440 mm)
RC015-KIT	Ø 16 mm	8 ft (2440 mm)
Stainless steel rod		
RS005-KIT	Ø 16 mm	8 ft (2440 mm)

FurseCEM® conductive aggregate

Part no.	Description
CM025	FurseCEM®
CM030	FurseCEM® (supplied with cement)

Bentonite moisture retaining clay

Part no.	Description
CM015	Bentonite powder 25kg
CM020	Bentonite granules 25kg



Lightweight inspection pit

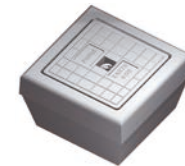
Part no.	Description
PT205	Lightweight inspection pit with grey polymer lid
PT309-FU	Lightweight inspection pit with black (unbranded) polymer lid
PT110*	Lightweight inspection pit with concrete lid
PT004	5 hole earth bar

Accessories for polymer lid

AK005	6 mm Allen key
-------	----------------

Accessories for concrete lid

JH100	M8 x 100 mm long mild steel 'J' bolt lifting hook
AS100	M8 x 60 stainless steel Allen caphead screw (2 per lid)



Concrete inspection pit

Part no.	Description
Earth bars for concrete inspection pit	
PT005	Concrete inspection pit

Accessories

PT006	5 hole earth bar
PT007	7 hole earth bar



Earth plate (solid copper)

Part no.	Size (mm)
PE005	600 x 600 x 1.5
PE015	900 x 900 x 1.5
PE010	600 x 600 x 3
PE020	900 x 900 x 3



Earth mat (lattice copper)

Part no.	Size (mm)
PE110	600 x 600 x 3
PE120	900 x 900 x 3



Digital earth resistance tester

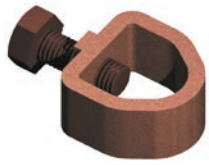
Part no.	Size (mm)
DET14C	Clamp earth resistance tester
DET3TC	Digital earth resistance tester
DET4TD2	Digital earth resistance tester
DET2/2	Digital earth resistance tester



Earth bonds & clamps

Mechanical clamps

5



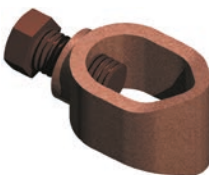
Rod to tape clamp (type A)

Part no.	Nominal rod diameter (") , (mm)	Max. conductor (mm)
CR105	Ø ½ Ø 12.7	26 x 12
CR105	Ø ¾ Ø 16	26 x 12
CR105	Ø ¾ Ø 20	26 x 10
CR108	Ø ¾ Ø 16	30 x 2
CR108	Ø ¾ Ø 20	30 x 2
CR110	Ø ¾ Ø 16	40 x 12
CR115	Ø ¾ Ø 16	51 x 8
CR125	Ø ¾ Ø 20	51 x 12
CR130	Ø ½ Ø 12.7	26 x 20
CR130	Ø ¾ Ø 16	26 x 18
CR130	Ø ¾ Ø 20	26 x 10
CR130	Ø 1 Ø 25	26 x 10



Rod to tape clamp (type B)

Part no.	Nominal rod diameter (") , (mm)	Rod type
CR205	Ø ¾ Ø 9.5	Copperbond
CR215	Ø ¾ Ø 16	Copperbond
CR220	Ø ¾ Ø 15	Solid copper
CR225	Ø ¾ Ø 20	Copperbond
CR230	Ø ¾ Ø 20	Solid copper



Rod to tape clamp (type G)

Part no.	Nominal rod diameter (") , (mm)	Max. conductor (mm)
CR505Ø	Ø ¾ Ø 9.5	6-35
CR510-FU*	Ø ½ Ø 12.7	16-50
G5	Ø ¾ Ø 16	5.2-33.6
CR515*	Ø ¾ Ø 16	16-70
G6	Ø ¾ Ø 20	5.2-33.6
CR520*	Ø ¾ Ø 20	35-95
CR525	Ø 1 Ø 25	70-150



Rebar clamp

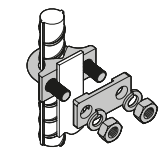
Part no.	Conductor size (mm)	Rebar diameter (mm)	Conductor material
BN150	Ø 8	Ø 8-18	Copper
BN155	Ø 8	Ø 18-38	Copper



'U' bolt rod clamp (type E)

Part no.	Nominal rod/ rebar diameter (") , (mm)	Hole centres (mm)
CR305	Ø ¾ Ø 16	37
CR310	Ø ¾ Ø 20	37
CR315	Ø 1 Ø 25	37
CR320*	Ø ¾ Ø 16	37
CR325	Ø 1½ Ø 38	54
CR330	Ø 2 Ø 50	64
CR326	Ø 1½ Ø 38	54

*CR320 includes additional plate to allow tape to be clamped without drilling



Rebar to rebar connecting clip

Part no.	Max. rebar diameter (A) (mm)	Min. rebar diameter (B) (mm)
RR812	Ø 8	Ø 12
RR1616	Ø 16	Ø 16
RR2121	Ø 20	Ø 20
RR2626	Ø 25	Ø 25
RR3232	Ø 32	Ø 32
RR3838	Ø 40	Ø 40



'U' bolt rod clamp (type GUV)

Part no.	Nominal rod/ rebar diameter (") , (mm)	Conductor range (mm)
CR700	Ø ¾ Ø 16	16-95
CR700	Ø ¾ Ø 20	16-70
CR705	Ø ¾ Ø 16	70-185
CR705	Ø ¾ Ø 20	70-150
CR730	Ø ¾ Ø 16	150-300
CR730	Ø ¾ Ø 20	150-300
CR710	Ø 1 Ø 25	16-70
CR740	Ø 1 Ø 25	70-150
CR750	Ø 1 Ø 25	150-300



Rebar to conductor connecting clip

Part no.	Rebar diameter (mm)	Conductor size (mm)
RC25-087095	Ø 25	25 x 3 mm

Rebar to flat tape

RC25-087095	Ø 25	25 x 3 mm
-------------	------	-----------

Rebar to stranded/solid circular conductor

RC812-0850	Ø 12	50 mm² or Ø 8 mm
RC16-087095	Ø 16	Ø 8 mm dia., 50-70-95 mm²
RC20-087095	Ø 20	Ø 8 mm dia., 50-70-95 mm²
RC25-087095	Ø 25	Ø 8 mm dia., 50-70-95 mm²
RC32-087095	Ø 32	Ø 8 mm dia., 50-70-95 mm²
RC40-087095	Ø 40	Ø 8 mm dia., 50-70-95 mm²

Earth bonds & clamps

Earth boss bonds, clamps & static earth connection points



Earth boss

Part no.	Length (mm)	Diameter (mm)	Thread size (mm)
EB0000	25	Ø 25	M8
EB1000	25	Ø 25	M8
EB0110	30	Ø 30	M8
EB1110	30	Ø 30	M8
EB0111	30	Ø 30	M10
EB1111	30	Ø 30	M10
EB0120	30	Ø 40	M8
EB1120	30	Ø 40	M8
EB0121	30	Ø 40	M10
EB1121	30	Ø 40	M10
EB0130	30	Ø 50	M8
EB1130	30	Ø 50	M8
EB0131	30	Ø 50	M10
EB1131	30	Ø 50	M10
EB0211	40	Ø 30	M10
EB1211	40	Ø 30	M10
EB0212	40	Ø 30	M12
EB1212	40	Ø 30	M12
EB0221	40	Ø 40	M10
EB1221	40	Ø 40	M10
EB0222	40	Ø 40	M12
EB1222	40	Ø 40	M12
EB0231	40	Ø 50	M10
EB1231	40	Ø 50	M10
EB0232	40	Ø 50	M12
EB1232	40	Ø 50	M12
EB0311	50	Ø 30	M10
EB1311	50	Ø 30	M10
EB0312	50	Ø 30	M12
EB1312	50	Ø 30	M12
EB0321	50	Ø 40	M10
EB1321	50	Ø 40	M10
EB0322	50	Ø 40	M12
EB1322	50	Ø 40	M12
EB0001	50	Ø 50	M10
EB1331	50	Ø 50	M10
EB0332	50	Ø 50	M12
EB1332	50	Ø 50	M12



B bond

Part no.	Max tape width (mm)	Conductor material
BN105	26	Copper
BN005	26	Aluminium
BN113	31	Copper
BN114	40	Copper
BN117	50	Copper



RWP bond

Part no.	Max tape width (mm)	Conductor material
BN115	26	Copper
BN010	26	Aluminium



Watermain bond

Part no.	Max tape width (mm)	Conductor material
BN120	26	Copper



Pipe bond

Part no.	Conductor diameter (mm)	Palm hole diameter (mm)	Conductor material
BN175	Ø 8	Ø 50-200	Copper
BN176	Ø 8	Ø 50-200	Aluminium



Pipe clamp

Part no.	Pipe diameter (") (mm)	
3902	Ø ½-1	Ø 13-25
3903	Ø 1¼-2	Ø 32-50
3904	Ø 2½-3½	Ø 65-90
3905-TB	Ø 4-5	Ø 100-125
3906-TB	Ø 6	Ø 150
3907	Ø 8	Ø 200
3908	Ø 10	Ø 250
3909-TB	Ø 12	Ø 300



Tower earth clamp

Part no.	Conductor range (mm)	Conductor material
BN125	16-70	Copper
BN130	70-120	Copper
BN300-FU	25-50	Copper
BN305	25-50	Aluminium
BN320	120-185	Copper
BN325	185-240	Copper



Eyebolt

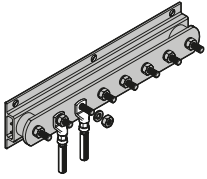
Part no.	Nominal copperbond rod diameter (")
BT150	¾
BT160	¾



Static earth receptacle

Part no.	Conductor material
RX005	Copper

Earth bars

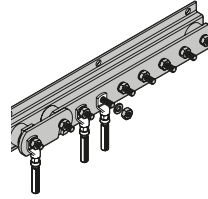


Earth bar

Part no.	Description)	Length (mm)
Copper earth bar		
LK245-6	6 way	400
LK245-8	8 way	500
LK245-10	10 way	650
LK245-12	12 way	750
LK245-14	14 way	850
LK245-16	16 way	950
LK245-18	18 way	1050
LK245-20	20 way	1200
LK245-22	22 way	1300
LK245-24	24 way	1400
LK245-26	26 way	1500
LK245-28	28 way	1650
LK245-30	30 way	1750

Tinned copper earth bar

LK245-6-T	6 way	400
LK245-8-T	8 way	500
LK245-10-T	10 way	650
LK245-12-T	12 way	750
LK245-14-T	14 way	850
LK245-16-T	16 way	950
LK245-18-T	18 way	1050
LK245-20-T	20 way	1200
LK245-22-T	22 way	1300
LK245-24-T	24 way	1400
LK245-26-T	26 way	1500
LK245-28-T	28 way	1650
LK245-30-T	30 way	1750



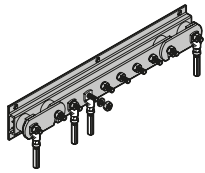
Earth bar with single disconnecting link

Part no.	Description)	Length (mm)
Copper earth bar		
LK243-6	6 way	475
LK243-8	8 way	575
LK243-10	10 way	725
LK243-12	12 way	825
LK243-14	14 way	925
LK243-16	16 way	1025
LK243-18	18 way	1125
LK243-20	20 way	1275
LK243-22	22 way	1375
LK243-24	24 way	1475
LK243-26	26 way	1575
LK243-28	28 way	1725
LK243-30	30 way	1825

Tinned copper earth bar

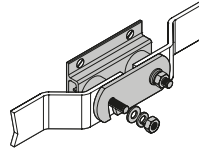
LK243-6-T	6 way	475
LK243-8-T	8 way	575
LK243-10-T	10 way	725
LK243-12-T	12 way	825
LK243-14-T	14 way	925
LK243-16-T	16 way	1025
LK243-18-T	18 way	1125
LK243-20-T	20 way	1275
LK243-22-T	22 way	1375
LK243-24-T	24 way	1475
LK243-26-T	26 way	1575
LK243-28-T	28 way	1725
LK243-30-T	30 way	1825

Earth bars



Earth bar with twin disconnecting link

Part no.	Description	Length (mm)
Copper earth bar		
LK207-6	6 way	550
LK207-8	8 way	650
LK207-10	10 way	800
LK207-12	12 way	900
LK207-14	14 way	1000
LK207-16	16 way	1100
LK207-18	18 way	1200
LK207-20	20 way	1350
LK207-22	22 way	1450
LK207-24	24 way	1550
LK207-26	26 way	1650
LK207-28	28 way	1800
LK207-30	30 way	1900
Tinned copper earth bar		
LK207-6-T	6 way	550
LK207-8-T	8 way	650
LK207-10-T	10 way	800
LK207-12-T	12 way	900
LK207-14-T	14 way	1000
LK207-16-T	16 way	1100
LK207-18-T	18 way	1200
LK207-20-T	20 way	1350
LK207-22-T	22 way	1450
LK207-24-T	24 way	1550
LK207-26-T	26 way	1650
LK207-28-T	28 way	1800
LK207-30-T	30 way	1900



Earth bar accessories

Part no.	Description
Copper earth bar	
LK004	Swan-neck link
LK205	Disconnecting link
Tinned copper earth bar	
LK004-T	Swan-neck link
LK205-T	Disconnecting link



Insulator

Part no.	Heigh (mm)	Insert size
Insulator		
IN020	20	M6
IN030	30	M6
IN040	40	M8
IN013	50	M10
IN060	60	M10
IN070	70	M12
Insulator with 2 studs and 3 nuts		
IN005	50	M10

Contact us

ABB Ltd

Electrification Products

Tower Court
Courtaulds Way
Foleshill Enterprise Park
Coventry
West Midlands
CV6 5NX
Sales Tel: +44 (0) 333 999 9900
Sales Fax: +44 (0) 333 999 9901
E-Mail: lv.enquiries@gb.abb.com

Note: We reserve the right to make technical changes or modify the contents of this document without prior notice. With regard to purchase orders and/or contracts, the agreed particulars shall prevail. ABB does not accept any responsibility whatsoever for potential errors or possible lack of information in this document.

We reserve all rights in this document and in the subject matter and illustrations contained therein. Any reproduction, disclosure to third parties or utilisation of its contents – in whole or in parts – is forbidden without prior written consent of ABB.

Copyright © 2016 ABB
All rights reserved

You can find the address of your local sales unit on the ABB home page:
<http://www.abb.com/contacts>
-> **Low Voltage Products & Systems**

ABB Furse

Wilford Road
Nottingham
NG2 1EB
Tel: +44 (0) 115 964 3700
Fax: +44 (0) 115 986 0071
E-Mail: enquiry@furse.com

www.furse.com