

We reserve all rights in this document and in the information contained therein. Reproduction, use or disclosure to third parties without express authority is strictly forbidden. © ABB 19

Pos. Läge	R connects förbinder	H connects förbinder
1	12-13	2-15
2A		3-15
2		4-15
3A		5-15
3		6-15
4		7-15
5A		8-15
5		9-15
6A		10-15
6B		11-15
6	12-14	12-15
6C		1-15
6D		2-15
6E		3-15
7		4-15
7A		5-15
8		6-15
8A		7-15
9		8-15
10		9-15
10A	10-15	
11		10-15

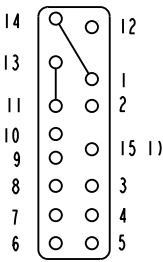
A position with letter is a through position and gives the same voltage as the normal position.

Läge med bokstav är ett genomloppsläge och ger samma spänning som normalläget.

1) Connections between the terminals 15 of the three phases are included in the star-point type.

Förbindningar mellan uttag 15 i de tre faserna ingår i nollpunktsutförandet.

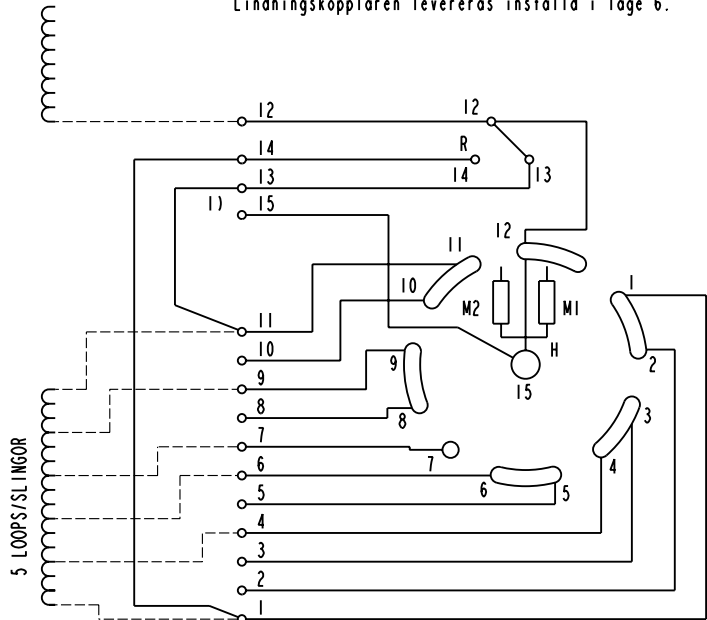
Terminal board Plint



Section A-A  
Sektion A-A

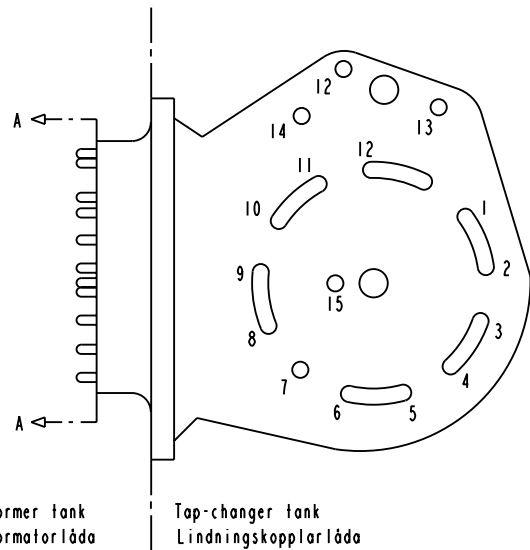
On-load tap-changer type UZER., UZFR., 11 tap positions, plus/minus switching.  
Max effective No. of turns in pos. 1.  
The tap-changer is delivered set in pos. 6.

Lindningskopplare typ UZER., UZFR., 11 lägen, plus/minus-koppling.  
Max antal effektiva varv i läge 1.  
Lindningskopplaren levereras inställd i läge 6.



The tap-changer is shown in pos. 6  
Lindningskopplaren visad i läge 6

- R Change-over selector  
Plus/minus-omkopplare
- H Main contact  
Huvudkontakt
- M1, M2 Transition contacts  
Motståndskontakter



Transformer tank  
Transformatorlåda

Tap-changer tank  
Lindningskopplarlåda

Rev	In	Revision	Appd	Year	Week
-	-				

Accepted by qual control R. Yngvesson	Accepted for prod by	Description (English) <b>CONNECTION DIAGRAM</b>	DATA ORIGINAL
Design checked by B-O. Stenestam	Drawn by L. Bergman	Description (own language) <b>KOPPLINGSSCHEMA</b>	File name 0394-2
Drawing checked by M. Hedlund	Issued by Dept Year Week COM/TKO 97 33	5492 0394-2	Lang Sheet 1
 Asea Brown Boveri			RevIn Cont -

Sheet

Cont

Year Week

RevIn

Design checked by

Drawn by Form No.

Design checked by