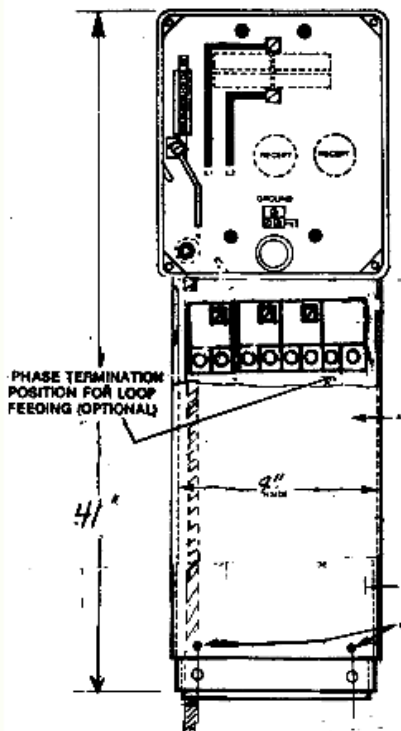


INSTALLATION INSTRUCTIONS FOR DOCKMATE/PARKMATE PAD MOUNTED POST (9 Inch Wide Post)

NEMA Type 3R Enclosure



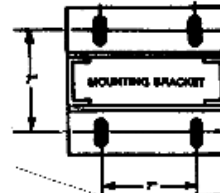
Installation Instructions for Optional Water Shroud:

1. Remove (4) mounting screw from post trough sides.
2. Position water shroud onto post, lining up mounting holes with holes in post. Re-install mounting screws.
3. Position cover onto shroud and fasten with (2) screws provided.

ELECTRICAL CONNECTIONS: All electrical connections shall be located at least 12 inches above the deck of a floating pier. All electrical connections shall be located at least 12 inches above the deck of a fixed pier but not below the electrical datum plane. Refer to National Electrical Code, Article for Marinas and Boatyards.

EASY INSTALLATION INSTRUCTIONS

1. Remove cover "A" by removing (2) screws "B". Slide cover slightly towards bottom of post (allowing top of cover to clear upper cover flange) and pull cover away from post.
2. Remove bag parts/mounting brackets from post assembly. Bag part contents: (2) "L" shaped mounting brackets, (4) 3/8" - 24 x 3/4" hex head screws; (4) 3/8 nuts; and, (8) 3/8" flatwashers.
3. Install the (2) mounting brackets on the inside of post with screws, nuts, and washers described above. (See diagram below.) Note: Use flatwashers on inside and outside of post to protect paint finish.
4. Attach post to pad using bolt pattern dimensions shown in the diagram on the right. (Use mounting template on reverse side of this instruction if desired.) Installation requires (4) 3/8" minimum bolts, nuts and washers not supplied.
5. Lay wires in and attach to terminal bar. (See rating label in post trough for wire range and torque information.)
6. Place cover "A" back on post and fasten with (2) mounting screw "B". Lock at "D".



Caution Procedure for All Aluminum Terminations

The following procedures is recommended when connecting aluminum wire:

- Step 1 -Strip the insulation, being careful not to nick the wire.
- Step 2 -Wire brush the conductor strands.
- Step 3 -Thoroughly coat the stripped conductor with a suitable anti-oxidant compound such as Alnox or Penetrox A13.
- Step 4 -Insert conductor and tighten connector screw securely.

NOTE: When the telephone/TV components are installed in the isolated compartment, a 1/2 inch conduit is supplied. Allow approximately 8' slack in cables in isolated compartment for front panel removal.

NOTE: Utilize listed wet location conduit fitting on this installation.

Knockout Removal

When circuit breaker knockouts are provided in the deadfront panel, use the following method for removal when field installed breakers are required:

1. Turn off power.
2. Remove deadfront panel from enclosure.
3. Utilizing an Xacto type knife, scribe border of knockout(s) being removed. Several scribes may be required to cleanly break through retaining section of knockout. Ensure edges are straight - free of shavings.
4. Install required breaker(s) and wire as necessary.
5. Re-install deadfront panel and activate power.

NOTE: Cut in this channel to remove knockout for field installation of circuit breaker.



CAUTION

In order to prevent damage to the enclosure, properly align the conduct to prevent any unnecessary stress on the enclosure structure.



MIDWEST ELECTRIC PRODUCTS, INC.

R02 02/12/07

P.O. Box 910

Mankato, MN 56002-0910

MEPI 221