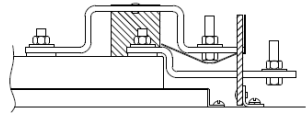
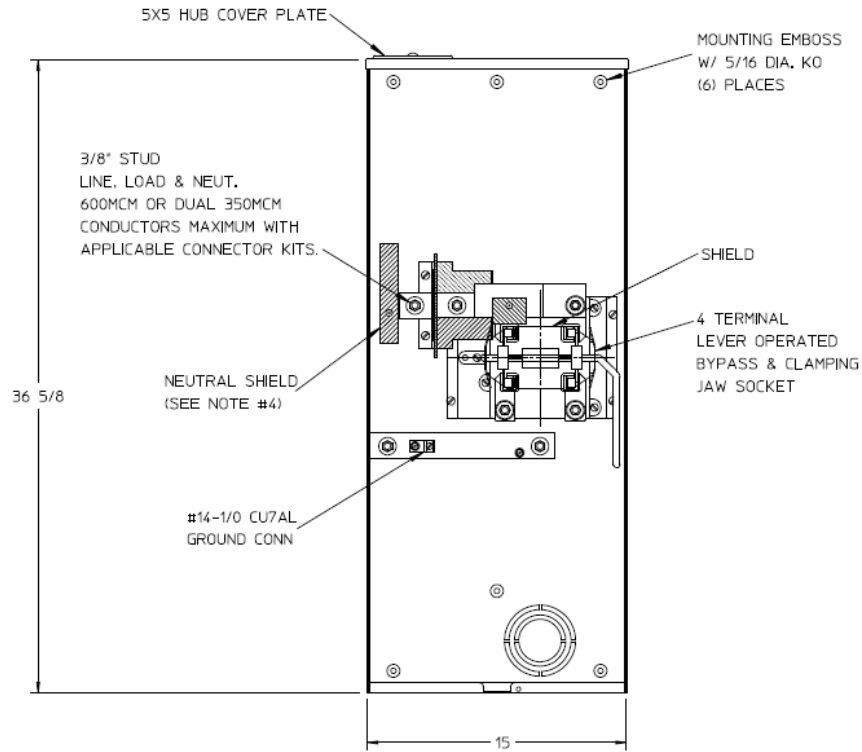


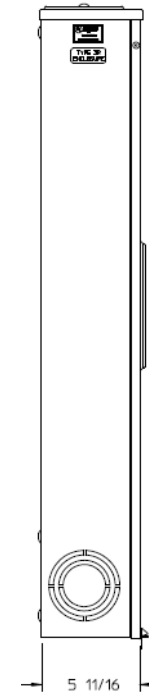
### Line Bus Detail



### Front View



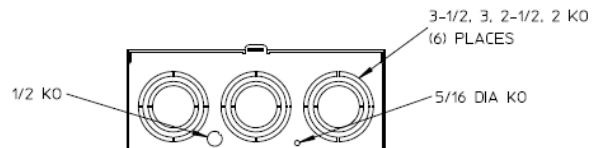
### Side View



### Notes

- 1) FINISH: GRAY
- 2) CABINET: 16 GA GALV. STEEL
- 3) 320 AMP CONTINUOUS  
600 VAC, 1 PHASE, 3-WIRE  
320 AMP BYPASS
- 4) WHEN INSTALLING THE NEUTRAL  
SHIELD, PLACE THE FLANGE AGAINST  
THE CONNECTOR.
- 5) MIDWEST LABEL ATTACHED TO THE  
END OF THE CARTON.
- 6) TEMPORARY CARDBOARD METER OPENING  
COVER PROVIDED.
- 7) MIDWEST LOGO STAMPED IN THE LOWER  
LEFT-HAND CORNER OF FRONT.

### Bottom View



METER SKT-(1) 320A 600V 1P3W N3R G90 4-TERM LARGE  
HUBCVRPLT TPLX GRD LEVER BYP TOP/BOT FEED

CAT NO	DWG DATE	REV #
1009260MEP	02/10/2016	01