

## DEA520

# Power Break® II into a Power Break I Retrofit Kit



Many users of Power Break I circuit breakers would like to upgrade to a newer breaker with more features. The new Power Break II Retrofit Kit allows them to do just that, with only minor modifications.

Everything needed to put a new Power Break II circuit breaker into a fixed mount Power Break I slot is included. Among other benefits, the Power Break II upgrade will feature the EntelliGuard® TU trip unit with advanced Waveform Recognition Instantaneous and RELT. Power Break II retrofit kits are for fixed

The kits are designed, tested and approved by ABB. The Power Break II breaker maintains its UL rating. Kits include:

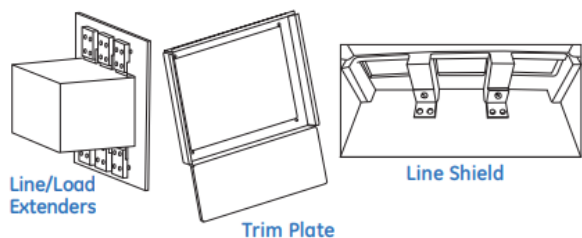
- trim plate
- door cut-out diagrams
- mounting hardware
- line/load copper extenders (1600A, 2000A)
- line shield (1600A, 2000A)
- drilling templates (1600A, 2000A)

Frame Rating(s)	Operation	Kit Cat. No.*
800A	Manual/Electric	SSF08TPCC
1600A	Manual/Electric	SSF16TPCC
2000A	Manual/Electric	SSF20TPCC
2500A, 3000A, 4000A	Manually Operated	SSF40TPCCM
	Electrically Operated	SSF40TPCCE

\* For kits shipped with breaker. For kits without breaker, add "R" to catalog number.  
 \*\* Breaker not included with retrofit kit. Breaker ordered separately.

Available publications:

Power Break II Conversion Kit Instruction Manual	DEH-41502
Power Break II Application Guide	GET-8052



Power Break and EntelliGuard are registered trademarks of ABB Inc. Information provided is subject to change without notice. Please verify all details with ABB. All values are design or typical values when measured under laboratory conditions, and ABB makes no warranty or guarantee, express or implied, that such performance will be obtained under end-use conditions.

We reserve the right to make technical changes or modify the contents of this document without prior notice. With regard to purchase orders, the agreed particulars shall prevail. ABB Inc. does not accept any responsibility whatsoever for potential errors or possible lack of information in this document.

We reserve all rights in this document and in the subject matter and illustrations contained therein. Any reproduction or utilization of its contents – in whole or in parts – is forbidden without prior written consent of ABB Inc. Copyright© 2019 ABB