

—
PRODUCT SHEET

Carlton® Deep Blue™ multipurpose non-metallic electrical box



Carlson's most versatile non-metallic box ever

Single- or two-gang designs that work on wood or steel studs; in new or old work; with simple, fast installation; vertical or horizontal

Key features

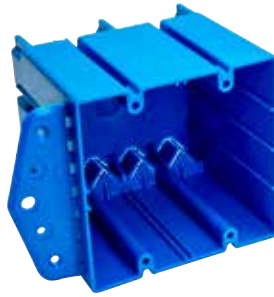
- Captive nails and screw guides—for vertical or horizontal mounting
- Break-off flange—for new or old work
- Large capacity—to hold dimmers and larger switches

All in the same Carlson blue...because blue boxes meet code!



B125AB features

- Carlson's largest standard single gang at 24.5 cu. in.
- New work and old work—stud mount applications
- Suitable for wood and steel studs
- Suitable for horizontal and vertical mounting
- Easy installation with captive nails
- Internal screw guides for installation
- Internal mounts allow to change depth of install
- Flange for new work application
- Break away flange for old work application
- Internal screws (not provided) #6x1.25" minimum
- Accepts wire fill/size: 12/14, 11/12, 10/10



B249B features

- Carlson's largest double-gang at 48.2 cu. in.
- Voltage divider available
- Suitable for old work and new work
- Suitable for wood and steel studs
- Internal screw guides for installation
- Internal mounts allow to change depth of install
- Flange for new work application
- Break away flange for old work application
- Internal screws (not provided) #6x1.25" minimum
- Accepts wire fill/size: 23/14, 20/12, 18/10



SCDIVS features

- For high- and low-voltage closed back box
- Slip-in place divider
- Ideal for fire-rated box



Watch our video to learn more about Carlson's most versatile box.



| Catalog number | Size (cu. in) | Mounting means | Description | Dimensions (in.) | Std. ctn. |
|----------------|---------------|---|---|--|-----------|
| B125AB | 24.5 | Captive nails, side flange, internal screws | Mounts to metal or wood stud, horizontally or vertically, new work or old work. | 3 ¹⁵ / ₁₆ L x 2 ⁷ / ₃₂ W x 3 ¹³ / ₁₆ D | 24 |
| B249B | 48.2 | Side flange, internal screws | Mounts to metal or wood stud with break-away side flange, new work or old work | 3 ¹⁵ / ₁₆ L x 4 ¹ / ₃₂ W x 3 ¹³ / ₁₆ D | 12 |
| SCDIVS | | Insert into double gang B249B | Low Voltage divider | | 5 |

ABB Industrial Products

Memphis, TN
USA

abb.com