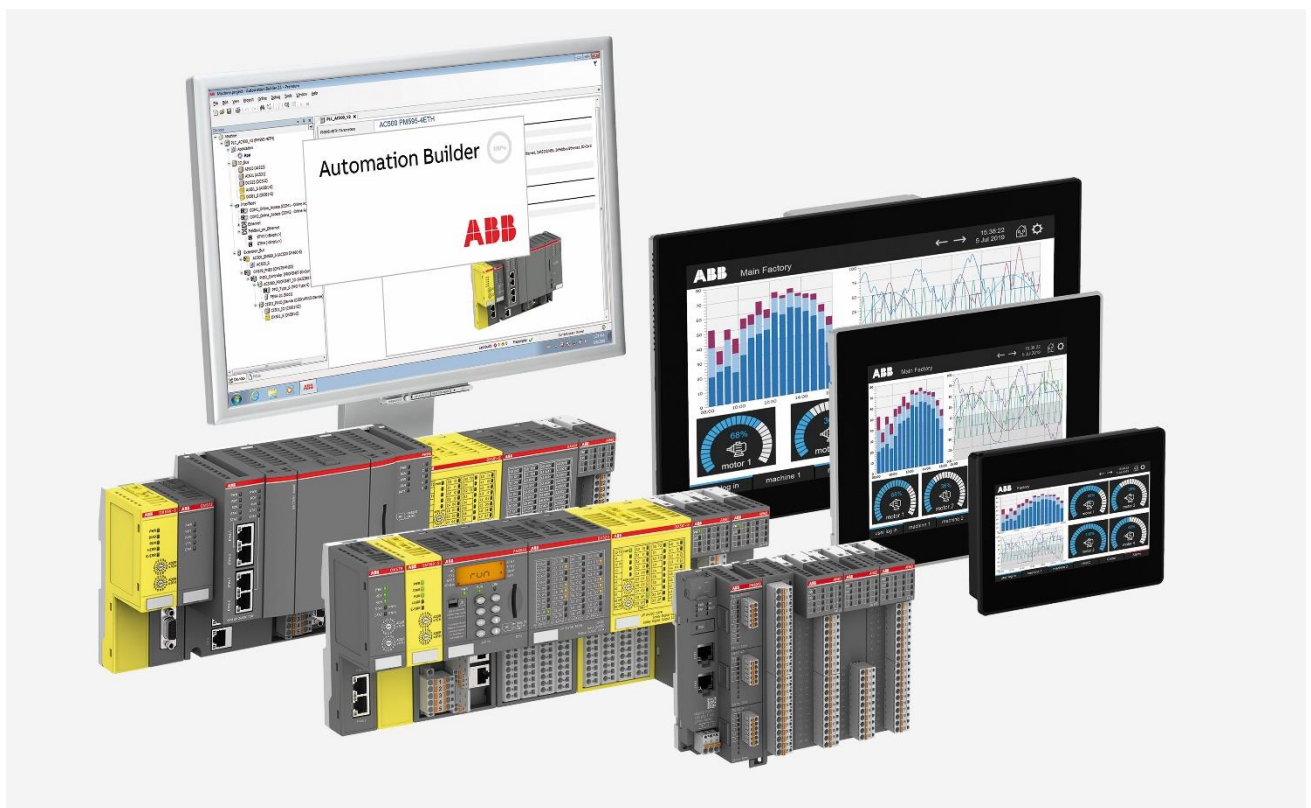


APPLICATION NOTE

AC500 V3 FIRMWARE UPDATE HOW TO UPDATE FIRMWARE



Contents

1	Introduction	3
1.1	Scope of the document	3
1.2	Compatibility	3
2	Check for updates.....	4
3	Update firmware.....	5
3.1	Firmware Update with Automation Builder.....	5
3.2	Create SD card to update firmware.....	6

1 Introduction

1.1 Scope of the document

This document describes different steps to update the different firmware version like CpuFW, BootFW etc. of an AC500 V3 PLC. This can be done Automation Builder or via SD card.

In AC500 V3 there is a strict connection between Automation Builder and Firmware version

Automation Builder	2.1.X	2.2.X	2.3.X	2.4.X	2.5.X	2.6.X	...
System Firmware Version	3.1.X	3.2.X	3.3.X	3.4.X	3.5.X	3.6.X	...

1.2 Compatibility

The application note explained in this document has been used with the below engineering system versions. They should also work with other versions, nevertheless some small adaptations may be necessary, for future versions.

- AC500 V3 PLC

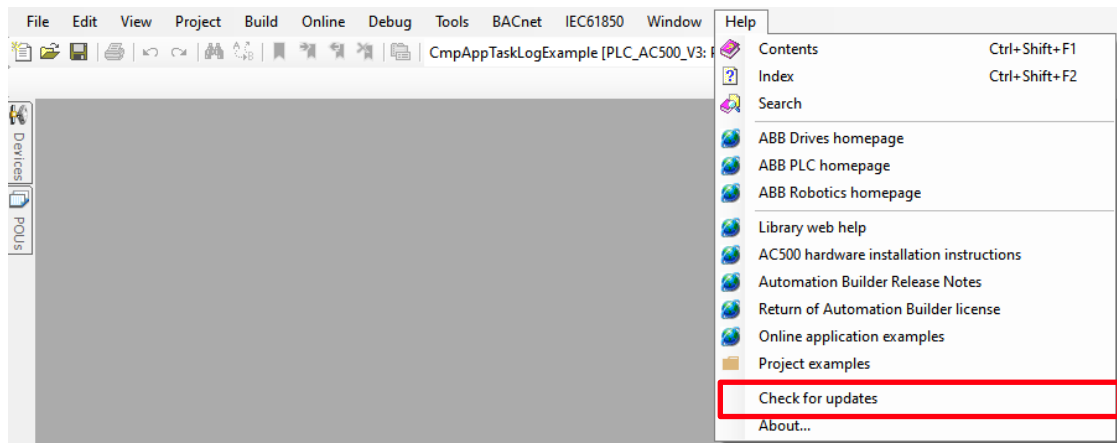
2 Check for updates

To get the latest version of Automation Builder and the responding firmware version, please navigate to our website and download the latest version.

[Download Automation Builder](#)

When Automation Builder is already installed, it's possible to check within the software if a Hotfix or Service release is available for the current version. Please start the software, navigate to:

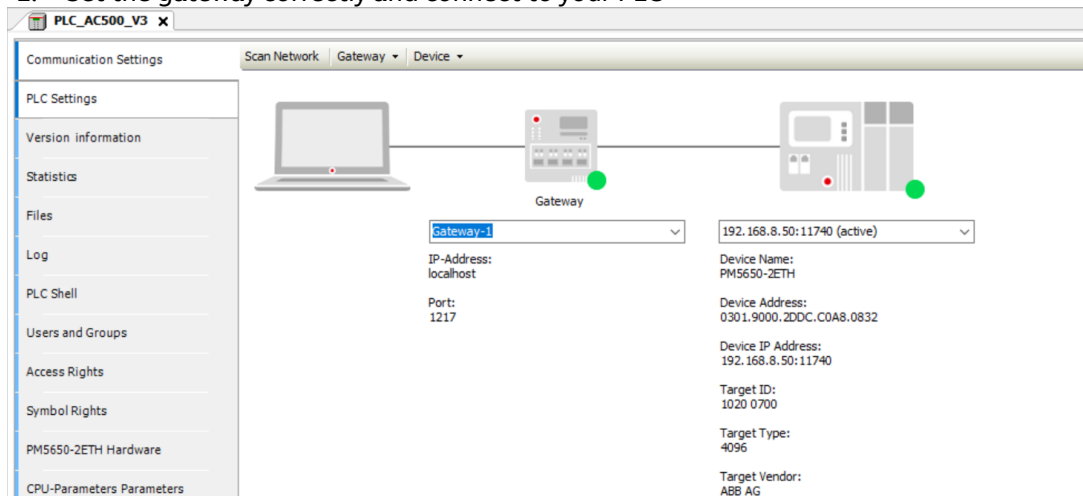
Help > Check for updates



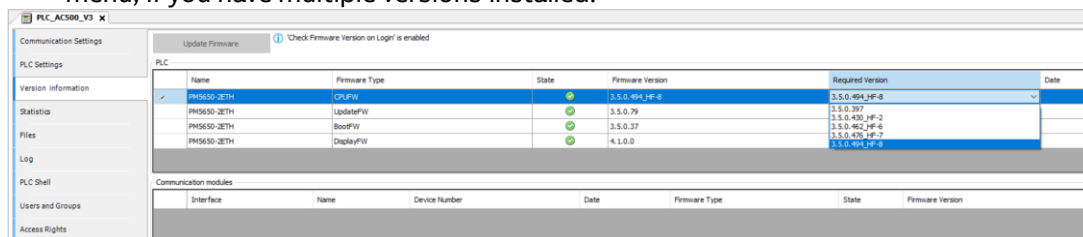
3 Update firmware

3.1 Firmware Update with Automation Builder

1. Start Automation Builder
2. Set the gateway correctly and connect to your PLC



3. Select the “**Version Information**” tab and choose the correct firmware via drop down menu, if you have multiple versions installed.

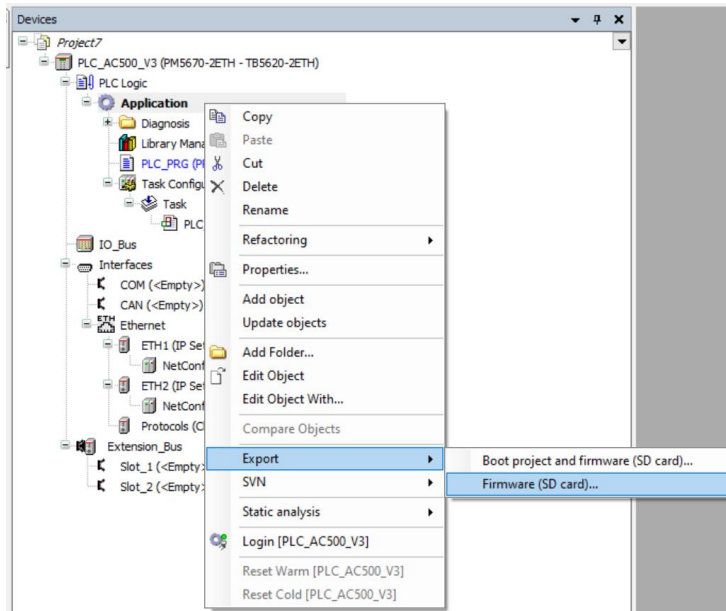


4. Set the PLC to Stop mode and click the **Update Firmware** button above
5. Wait until the Automatio Builder shows success message
6. Also in the PLC display, the current status will be shown

3.2 Create SD card to update firmware

With Automation Builder you can export the latest firmware version, which can be used to update via a SD card.

1. Open Automation builder, right click on: *Application > Export > Firmware (SD card)...*



2. Select an empty folder on your PC. You will receive a success message once done
3. Copy all files in this folder to an SD card
4. Plug the SD card to the PLC and repower the PLC. Follow the instruction in the display and remove the SD card and reboot if required



ABB AG
Eppelheimer Straße 82
69123 Heidelberg, Germany
Phone: +49 62 21 701 1444
Fax: +49 62 21 701 1382
E-Mail: plc.support@de.abb.com
www.abb.com/plc

We reserve the right to make technical changes or modify the contents of this document without prior notice. With regard to purchase orders, the agreed particulars shall prevail. ABB AG does not accept any responsibility whatsoever for potential errors or possible lack of information in this document.

We reserve all rights in this document and in the subject matter and illustrations contained therein. Any reproduction, disclosure to third parties or utilization of its contents – in whole or in parts – is forbidden without prior written consent of ABB AG.
Copyright© 2023 ABB. All rights reserved