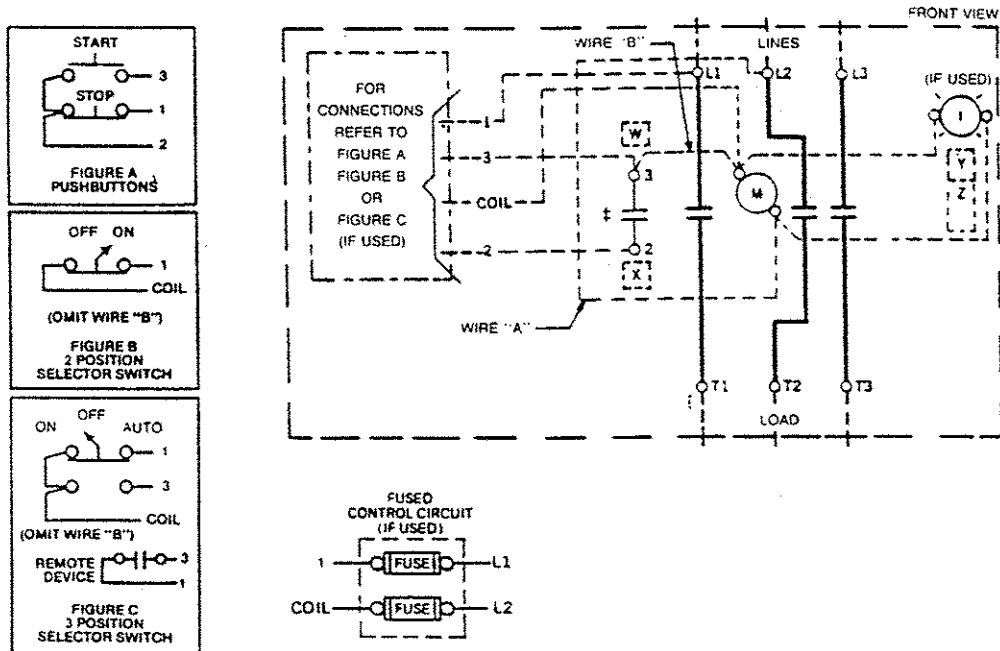


GEJ-7201 Information Label
CR360L Lighting Contactor
 30 Ampere



M-LINE CONTACTOR
 I-INDICATING LIGHT

Use 75°C. copper conductors only, for field wiring. Torque line and load terminals to 20 lb-in.

FOR SEPARATE CONTROL—Omit wire "A" and connect control source to coil and to 1 on control device.

NOTE: Refer to the National Electrical Code. Additional control circuit overcurrent protection may be required.

FOR 1-PHASE OPERATION—Change connection of wire "A" from L2 to L3. Connect lines to L1 and L3 and load to T1 and T3.

COIL (Order 15D21G plus coil suffix number per table below)

60 Hz	115-120V	200-208V	230-240V	—	460-480V	575-600V
50 Hz	110V	—	220V	380V	440V	550V
Coil Suffix	002	023	003	064	004	005

The following accessory kits may be installed on this device.
 AUX CONTACT CR305X100A. B. C. D. E
 CONTROL CIRCUIT FUSE CR305X141A. B. C. D
 For CSA-GND KIT 55-213403G001
 1/2-IN CONDUIT 55-213403G002
 3/4-IN CONDUIT 55-213403G002

Final Suffix Letter Of CR Number	Contact Location. See Diagram			
	W	X	†Y	†Z
A (Or None)				
B				
C				
D				
E				
F				
G				
H				
J				
†Z	No Holding Interlock			

† Not available when Control Circuit Fuse Kit is used.

PRINCIPAL RENEWAL PARTS
4 Movable & 8 Sta Cont. 546A301G002

