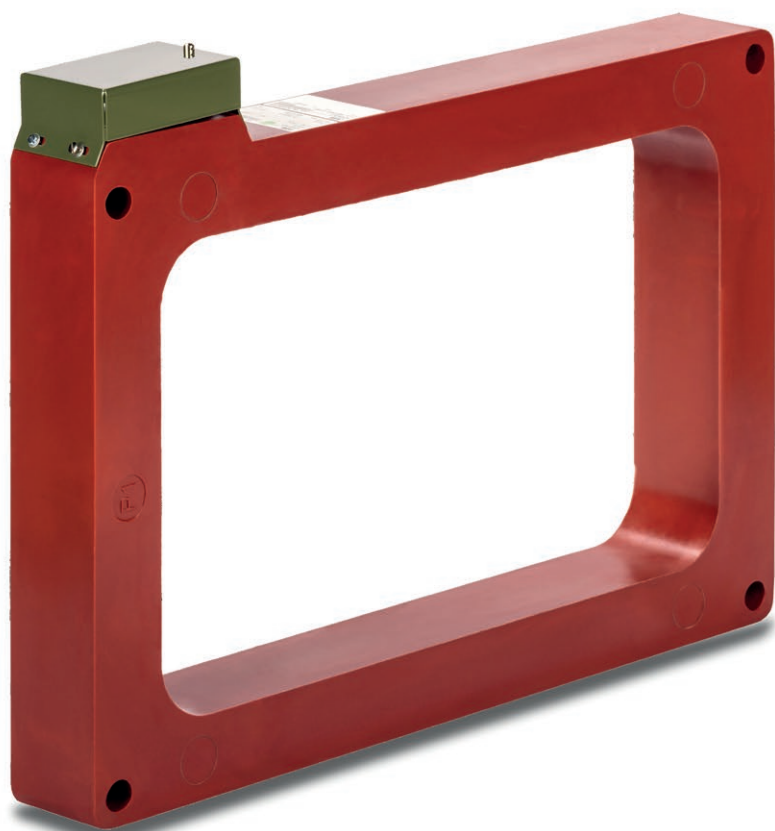


MEDIUM VOLTAGE PRODUCT

KOKM

Indoor cable current transformer



—
01 Marking of current transformer outlets - example
a) one secondary winding example: 100/1 [A/A]
b) multi-tap secondary winding example: 50-100/1 [A/A]
c) two secondary windings example: 800/5/5 [A/A/A]

Technical parameters	Values	
	KOKM 06	KOKM 1
Highest voltage for equipment	0.72 kV	1.2 kV
Rated power-frequency withstand voltage	3 kV	3 kV
Rated lightning impulse withstand voltage	-	-
Rated frequency	50 or 60 Hz	
Rated primary current, I_{pr}	50 - 2 000 A	50 - 10 000 A
Rated secondary current I_{sr}	1 or 5 A	
Rated short-time thermal current, I_{th}	$60 * I_{pr}$ (max 100 kA/ 1s)	
Rated dynamic current, I_{dyn}	$2.5 * I_{th}$ (max 250 kA)	
Conformity with standard and accuracy classes	IEC, IEEE, GOST, BS, CAN, etc.	
Operating temperature range	-25 ... +40 °C	

Note: Other parameters on request.

Description

KOKM_ current transformers are suitable for measuring phase currents. A busbar or cable serves as the primary conductor. Series KOKM current transformers can also be used for measuring the phase current at voltages higher than 0.72 kV (for KOKM 06) or 1.2 kV (for KOKM 1), if the insulation of the primary conductor satisfies the requirements of the respective standards for the operating voltage. The secondary winding and ring shaped iron core are cast in resin which has good electrical and mechanical properties.

Ordering data

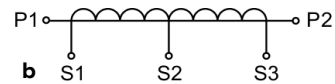
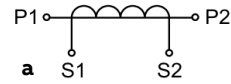
The order should contain the following data:

- Type of current transformer
- Rated primary current/rated secondary current [A/A]
- Rated burden and accuracy class for each winding [VA]
- Short-time thermal current I_{th}
- Dimension of the window [mm]
- Standard
- Quantity

Order example

KOKM 1 FC 8; 600/5 A/A; 10 VA; 0.5; $I_{th} = 60 * I_{pr} / 1s$;
IEC 61869-1; 9 Pcs.

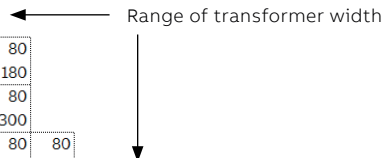
Terminal markings



—
01

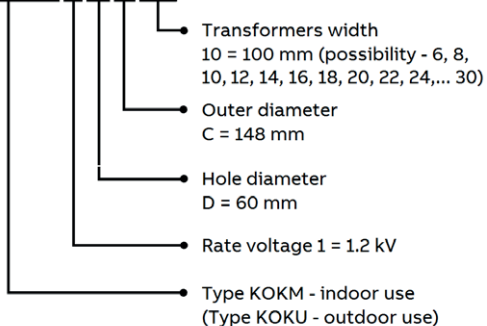
KOKM 1 dimension table

Outer diameter [mm]		Hole diameter [mm]																Drawing	Casting height [mm]	Total height [mm]	Hole center height				
		A	B	D	E	F	G	H	K	N	R	S	U	V	W	X	Y					Z			
C	148	60	60	60	60	60															KOKM 1_C_	183	227	112	
		160	160	160	160	160																			
F	186	60	60	60	60	60	60	60														KOKM 1_F_	212	256	130
		160	160	160	160	160	160	160																	
H	200	80	80	80	80	80	80	80	80													KOKM 1_H_	235	279	138
		180	180	180	180	180	180	180	180																
J	235	80	80	80	80	80	80	80	80	80												KOKM 1_J_	265	323	158
		300	300	300	300	300	300	300	300	300															
K	250	80	80	80	80	80	80	80	80	80	80											KOKM 1_K_	274	332	158
		200	200	200	200	200	200	200	200	200	200														
L	270	80	80	80	80	80	80	80	80	80	80	80	80									KOKM 1_L_	296	354	158
		200	200	200	200	200	200	200	200	200	200	200	200												
M	280	80	80	80	80	80	80	80	80	80	80	80	80	80								KOKM 1_M_	298	356	158
		240	240	240	240	240	240	240	240	240	240	240	240												
P	340	80	80	80	80	80	80	80	80	80	80	80	80	80								KOKM 1_P_	379	423	204
		200	200	200	200	200	200	200	200	200	200	200	200	200											
S	400	80	80	80	80	80	80	80	80	80	80	80	80	80	80							KOKM 1_S_	415	459	225
		200	200	200	200	200	200	200	200	200	200	200	200	200	200										
T	450				80	80	80	80	80	80	80	80	80	80	80							KOKM 1_T_	465	504	225
					200	200	200	200	200	200	200	200	200	200	200										
W	590					80	80	80	80	80	80	80	80	80	80	80	80	80	80	80	80	KOKM 1_W_	605	645	300
						200	200	200	200	200	200	200	200	200	200	200	200	200	200	200	200				



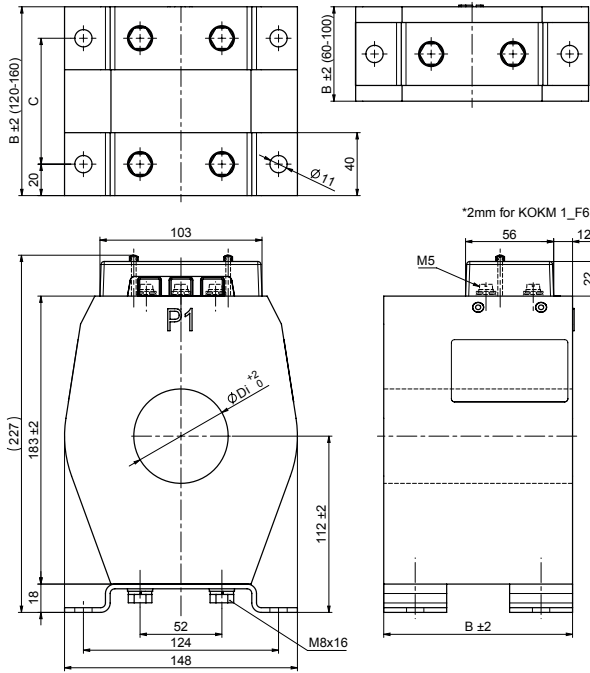
Example of code designation

KOKM 1 DC 10



Dimensional Drawings

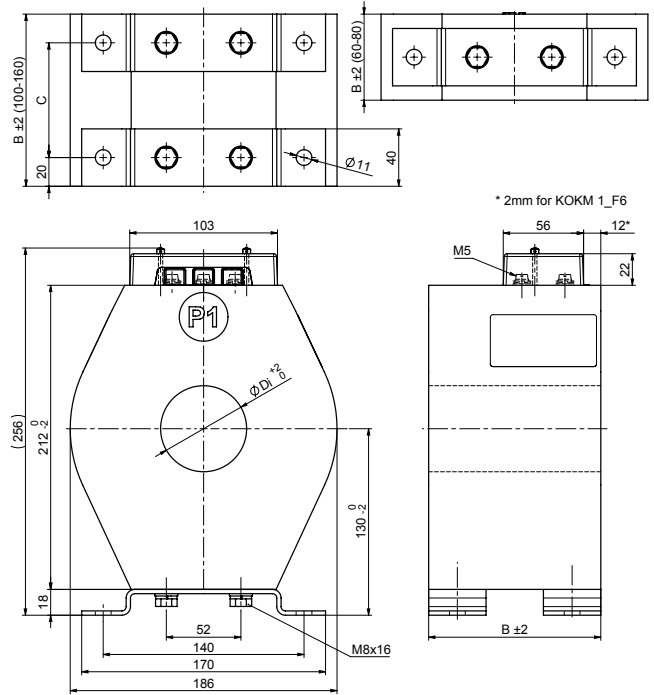
KOKM 1_C_



	A	B	D	E	F
Di =	33	42	60	70	85
	6	8	10	12	14
B =	60	80	100	120	140
C =	-	-	-	80	100

KOKM 1_C_

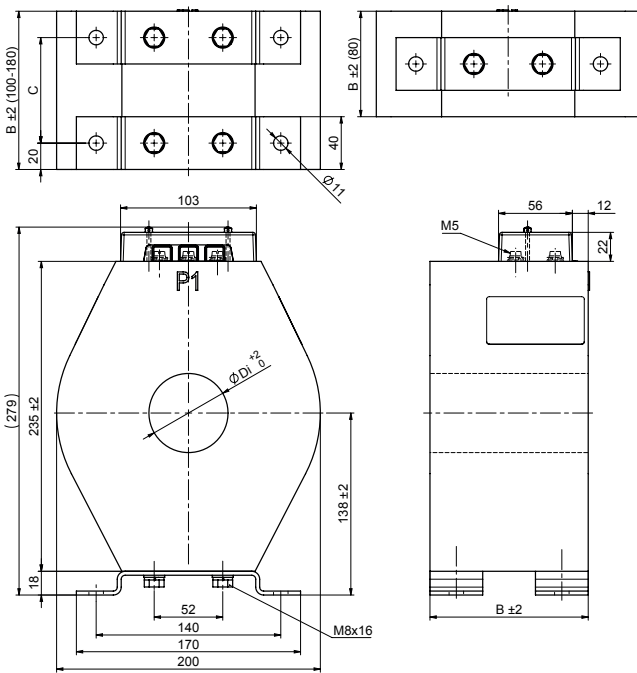
KOKM 1_F_



	A	B	D	E	F	G	H
Di =	33	42	60	70	85	90	100
	6	8	10	12	14	16	
B =	60	80	100	120	140	160	
C =	-	-	60	80	100	120	

KOKM 1_F_

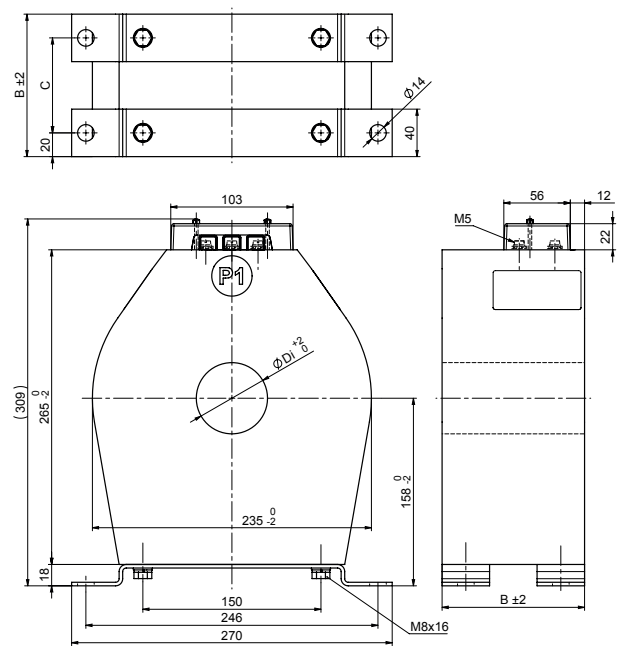
KOKM 1_H_



	A	B	D	E	F	G	H	K
Di =	33	42	60	70	85	90	100	120
	8	10	12	14	16	18		
B =	80	100	120	140	160	180		
C =	-	60	80	100	120	140		

KOKM 1_H_

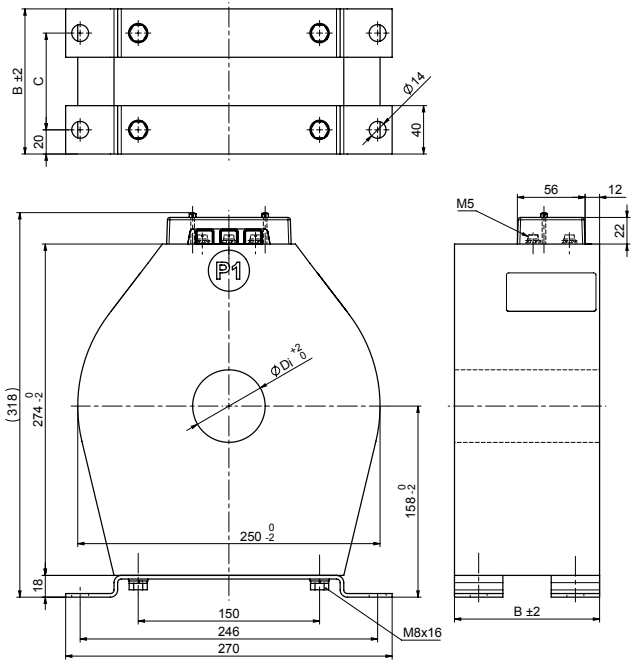
KOKM 1_J_



	A	B	D	E	F	G	H	K	N
Di =	33	42	60	70	85	90	100	120	155
	8	10	12	14	16	18	20	22	24
B =	80	100	120	140	160	180	200	220	240
C =	40	60	80	100	120	140	160	180	200

KOKM 1_J_

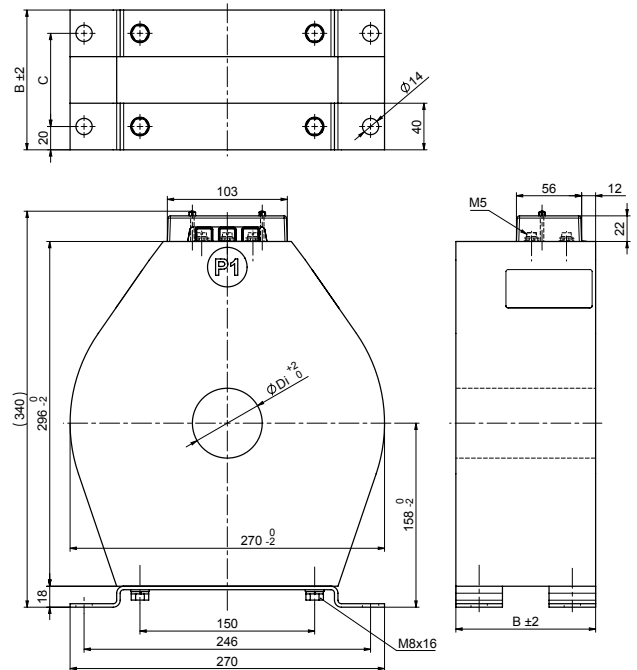
KOKM 1_K_



KOKM 1_K_ ↗

	A	B	D	E	F	G	H	K	N
Di =	33	42	60	70	85	90	100	120	155
	8	10	12	14	16	18	20		
B =	80	100	120	140	160	180	200		
C =	40	60	80	100	120	140	160		

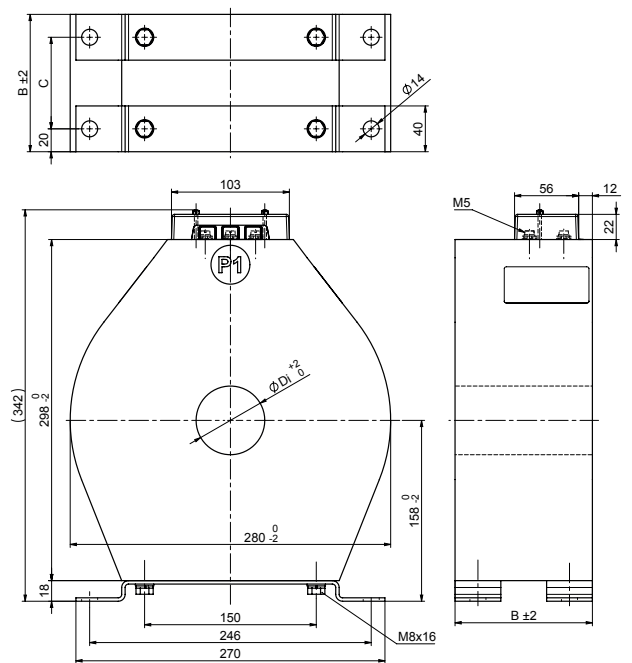
KOKM 1_L_



KOKM 1_L_ ↗

	A	B	D	E	F	G	H	K	N	R	S
Di =	33	42	60	70	85	90	100	120	155	180	200
	8	10	12	14	16	18	20				
B =	80	100	120	140	160	180	200				
C =	40	60	80	100	120	140	160				

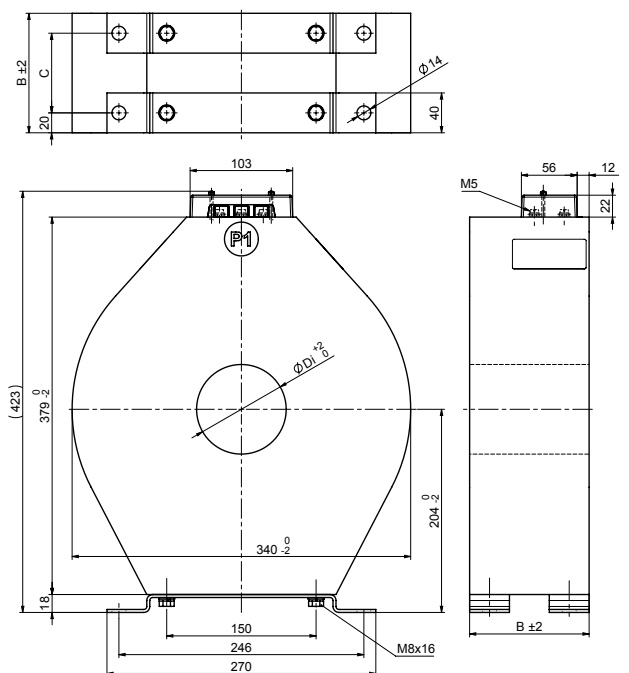
KOKM 1_M_



KOKM 1_M_ ↗

	A	B	D	E	F	G	H	K	N	R	S
Di =	33	42	60	70	85	90	100	120	155	180	200
	8	10	12	14	16	18	20	22	24		
B =	80	100	120	140	160	180	200	220	240		
C =	40	60	80	100	120	140	160	180	200		

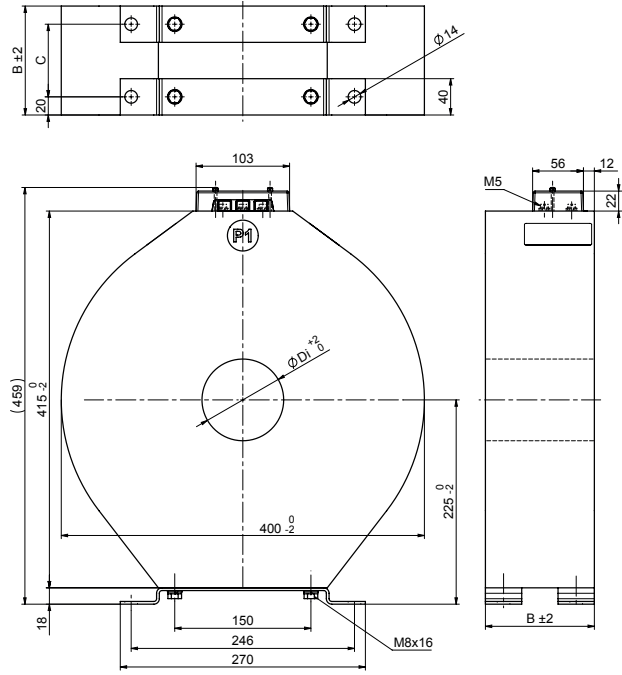
KOKM 1_P_



KOKM 1_P_ ↗

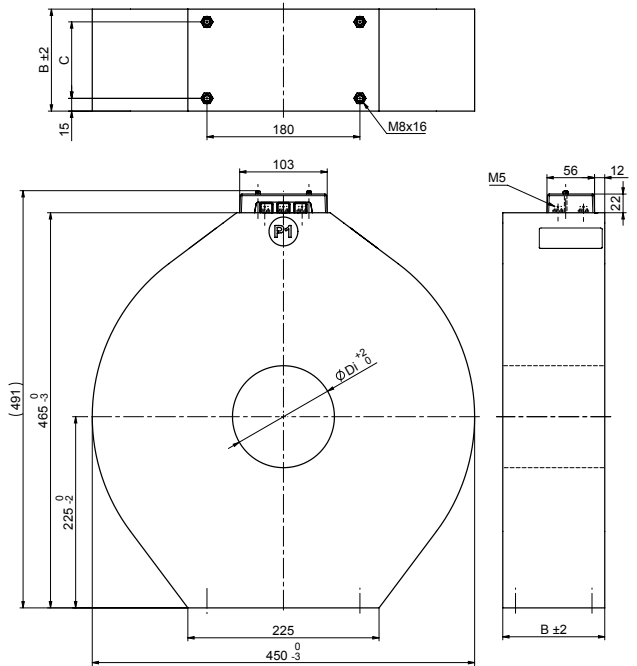
	B	D	E	F	G	H	K	N	R	S	U
Di =	42	60	70	85	90	100	120	155	180	200	250
	8	10	12	14	16	18	20				
B =	80	100	120	140	160	180	200				
C =	40	60	80	100	120	140	160				

KOKM 1_S_



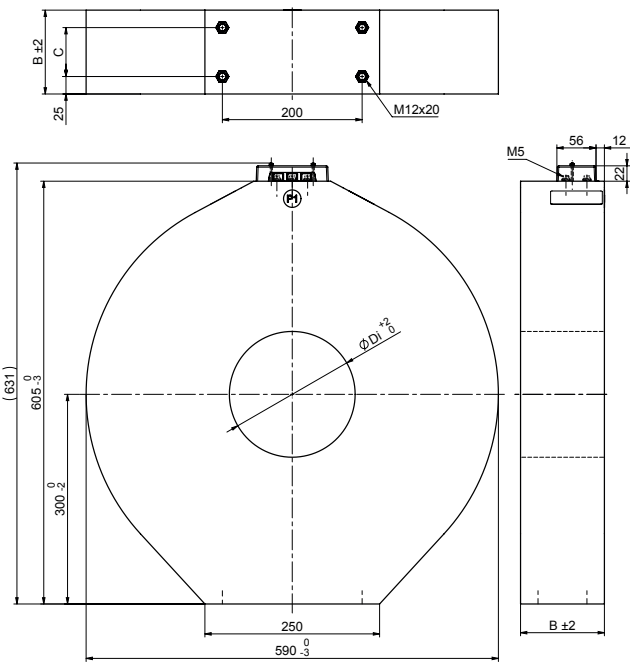
	B	D	E	F	G	H	K	N	R	S	U	V
Di =	42	60	70	85	90	100	120	155	180	200	250	315
	8	10	12	14	16	18	20					
B =	80	100	120	140	160	180	200					
C =	40	60	80	100	120	140	160					

KOKM 1_T_



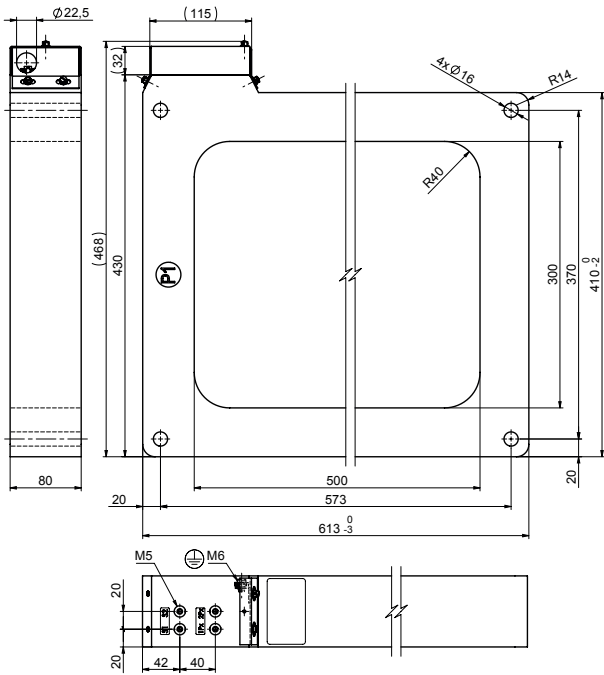
	F	G	H	K	N	R	S	U	V	W
Di =	85	90	100	120	155	180	200	250	315	350
	8	10	12	14	16	18	20			
B =	80	100	120	140	160	180	200			
C =	50	70	90	110	130	150	170			

KOKM 1_W_

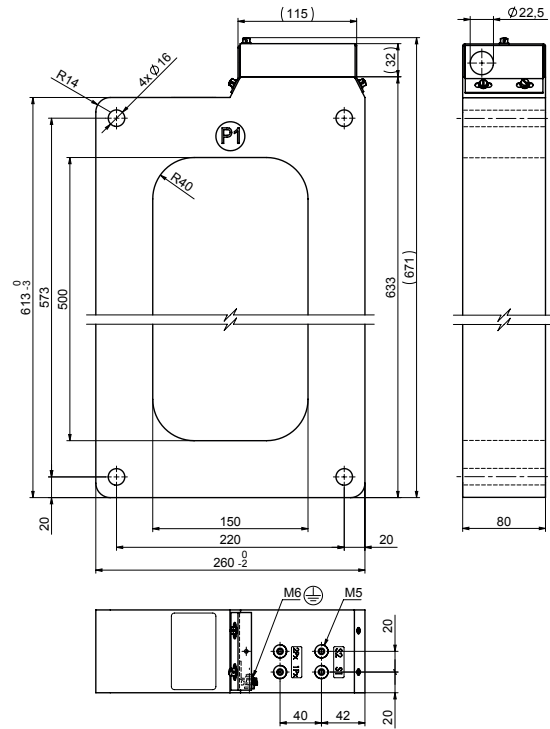


	G	H	K	N	R	S	U	V	W	X	Y	Z
Di =	90	100	120	155	180	200	250	315	350	400	450	500
	8	10	12	14	16	18	20					
B =	80	100	120	140	160	180	200					
C =	30	50	70	90	110	130	150					

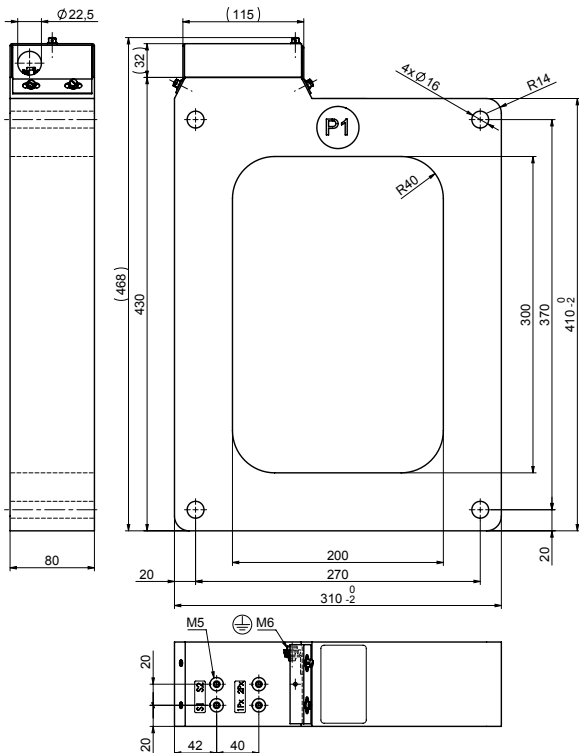
KOKM 06 J2



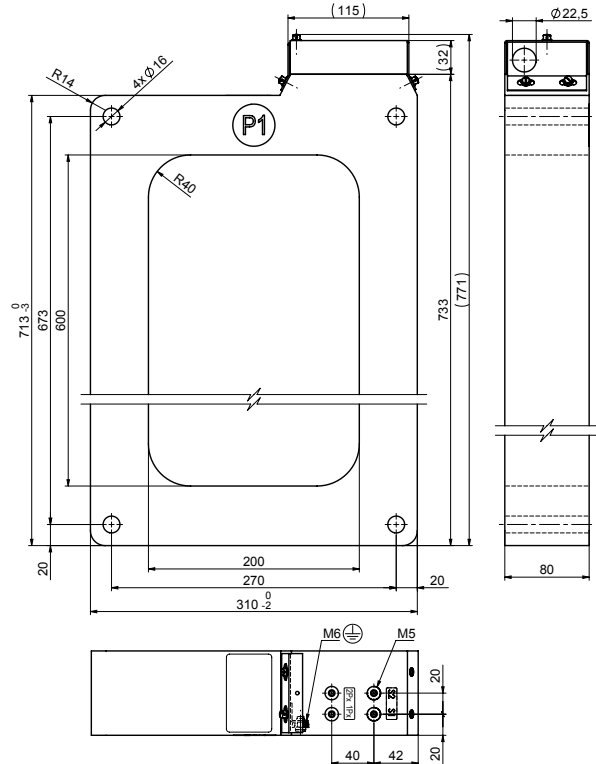
KOKM 06 J21



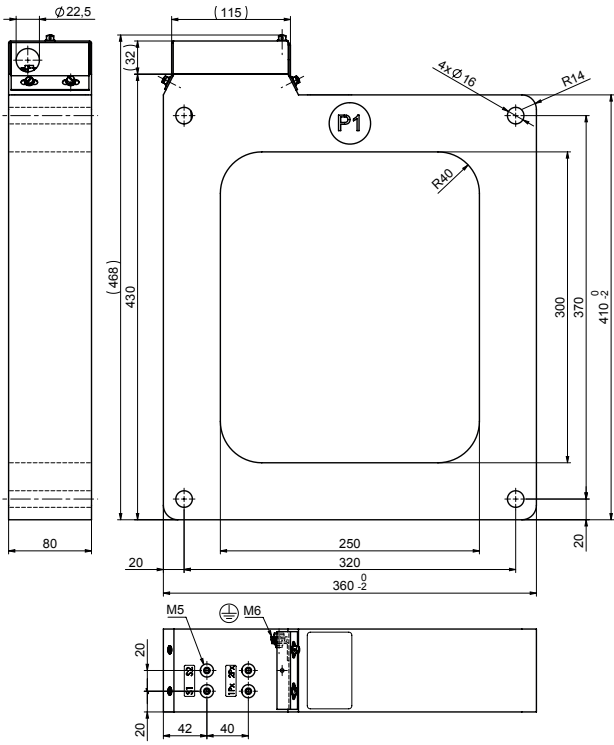
KOKM 06 J22



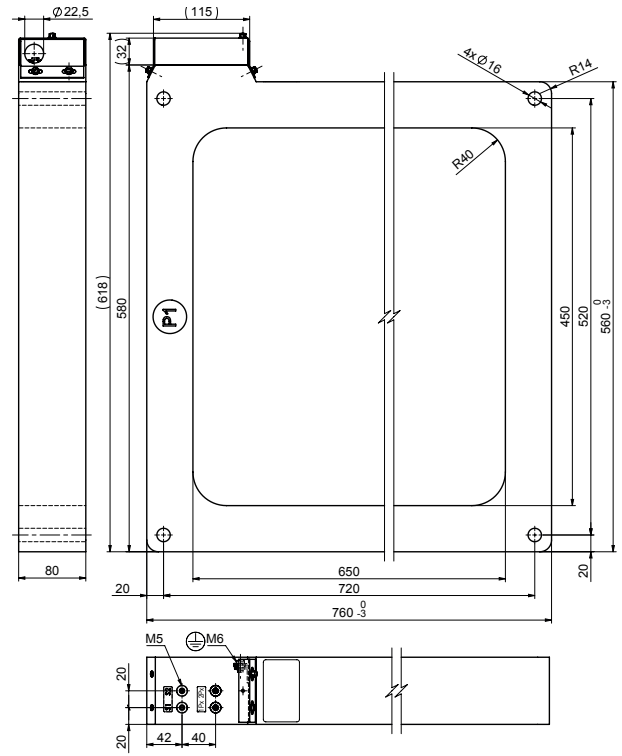
KOKM 06 J23



KOKM 06 J24



KOKM 06 J29



CONTACT US

ABB s.r.o.
EPDS Brno
Videnska 117, 619 00 Brno,
Czech Republic
Tel.: +420 547 152 021
+420 547 152 854
Fax: +420 547 152 626
E-mail: kontakt@cz.abb.com

NOTE

We reserve the right to make technical changes or modify the contents of this document without prior notice. With regard to purchase orders, the agreed particulars shall prevail. ABB does not accept any responsibility whatsoever for potential errors or possible lack of information in this document.

We reserve all rights in this document and in the subject matter and illustrations contained therein. Any reproduction, disclosure to third parties or utilization of its contents - in whole or in parts - is forbidden without prior written consent of ABB.

Copyright© 2019 ABB
All rights reserved