

Grid Automation Products

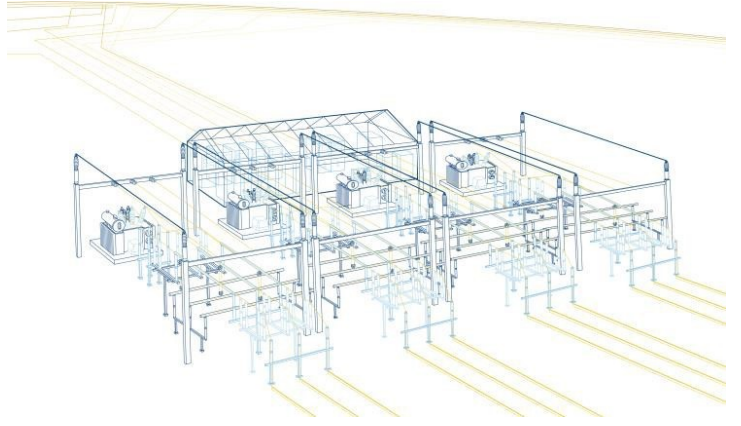
ITT600 SA Explorer

Integrated Testing Tool

Installation Guide

ITT600 SA Explorer Ver. 2.1





Document ID: 1MRK512009-UEN
Issued: November 2021
Product version: ITT600 SA Explorer Ver. 2.1.0

© 2004 - 2021 Hitachi Energy. All rights reserved

Copyright

This document and parts thereof must not be reproduced or copied without written permission from Hitachi Energy, and the contents thereof must not be imparted to a third party, nor used for any unauthorized purpose.

The software or hardware described in this document is furnished under a license and may be used, copied, or disclosed only in accordance with the terms of such license.

Trademarks

Hitachi Energy is a registered trademark of Hitachi Energy Group. All other brand or product names mentioned in this document may be trademarks or registered trademarks of their respective holders.

Warranty

Please inquire about the terms of guarantee from your nearest Hitachi Energy representative.

Disclaimer

We reserve the right to make technical changes or modify the contents of this document without prior notice.

The data, examples and diagrams in this manual are included solely for the concept or product description and are not to be deemed as a statement of guarantee properties. All persons responsible for applying the equipment addressed in this manual must satisfy themselves that each intended application is suitable and acceptable, including that any applicable safety or other operational requirements are complied with. In particular, any risks in applications where a system failure and/or product failure would create a risk for harm to property or persons (including but not limited to personal injuries or death) shall be the sole responsibility of the person or entity, applying the equipment, and those so responsible are hereby requested to ensure that all measures are taken to exclude or mitigate such risks.

This document has been carefully checked by Hitachi Energy but deviations cannot be completely ruled out. In case any errors are detected, the reader is kindly requested to notify the manufacturer. Other than under explicit contractual commitments in no event shall Hitachi Energy be responsible or liable for any loss or damage resulting from the use of this manual or the application of the equipment.

Important notice

Experience has shown that reliable operation of our products is assured, providing the information and recommendations contained in these Operating Instructions are adhered to.

It is scarcely possible for the instructions to cover every eventuality that can occur when using technical devices and systems. We would therefore request the user to notify us directly or our agent of any unusual observations or instances, in which these instructions provide no or insufficient information.

In addition to these instructions, any applicable local regulations and safety procedures must always be strictly observed both when connecting up and commissioning this equipment.

We expressly accept no responsibility or liability for any damage, which may result from operation of this equipment, even if no reference is made to the particular situation in the Operating Instructions.

ABB is a registered trademark of ABB Asea Brown Boveri Ltd. Manufactured by/for a Hitachi Energy company.

Table of contents

Section 1	Installation.....	3
1.1	Requirements.....	3
1.1.1	General Requirements.....	3
1.1.2	Hardware.....	3
1.1.3	Operating System.....	3
1.1.4	Additional Windows Components.....	3
1.2	Installation.....	4
1.3	Licensing of ITT600 SA Explorer.....	7
1.4	Folder Structure.....	8
1.5	Uninstall ITT600 SA Explorer.....	8
Section 2	Other Applicable Documents.....	9

Section 1 Installation

1.1 Requirements

1.1.1 General Requirements



To install the ITT600 SA Explorer package you need local administrator rights.

1.1.2 Hardware

ITT600 SA Explorer V2.1.0 requires the following hardware specifications:

1. Processor: minimum 2 GHz or faster
2. Memory RAM: minimum 3 GB; recommended 6 GB or more
3. Disk space: minimum 500 MB free space



ITT600 – Explore SV is a resource intensive application. It is highly recommended to set the power management of the computer to full performance in order to achieve smooth operation of the tool. Furthermore, when the application is running on a laptop computer, it is highly recommended to run it with the AC power supply and not solely on battery power.

1.1.3 Operating System

ITT600 SA Explorer V2.1.0 runs on:

- Windows 8 (64-bit)
- Windows 10 (64-bit)
- Windows Server 2012 R2 (64-bit)
- Windows Server 2016 (64-bit)
- Windows Server 2019

1.1.4 Additional Windows Components

ITT600 SA Explorer V2.1.0 also requires the following component to run:

1. Windows Installer 4.5
2. .NET Framework 4.8
3. Microsoft Visual C++ Redistributable 2022



In case .NET Framework 4.8 and/or Microsoft Visual C++ Redistributable 2022 is missing, the setup will launch the installer automatically. The installation will fail if these components are not available.



As .NET Framework is backward compatible, it is enough to get only 4.8 version installed for working with ITT. However in case of some unexpected issues in application, turning on .NET Framework 3.5 windows feature could help. More details about enabling .Net 3.5 can be found on Microsoft web page: [Microsoft .NET Framework 3.5 Deployment Considerations](#) and [Install the .NET Framework 3.5 on Windows 10, Windows 8.1, and Windows 8](#). The offline installer can be found here: [Download .NET Framework 3.5 SP1](#).

1.2 Installation

Launch the ABB ITT600 SA Explorer setup package. Installer will show the license agreement window.



Figure 1: ITT600 SA Explorer Installation License Agreement

Installation location can be checked under the options window.

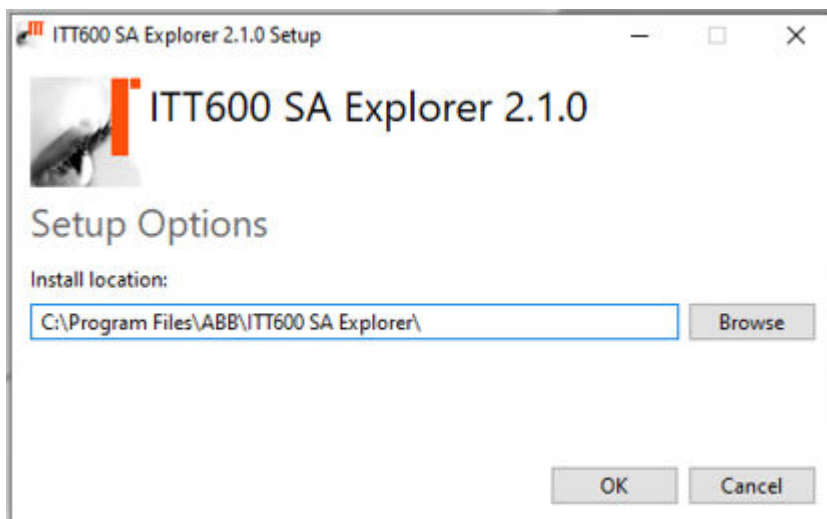


Figure 2: ITT600 SA Explorer Installation Location

After accepting the license, the ITT600 SA Explorer installation will start and check if the above mentioned windows components and Npcap are installed.

If Npcap is not already installed, the installer will run.

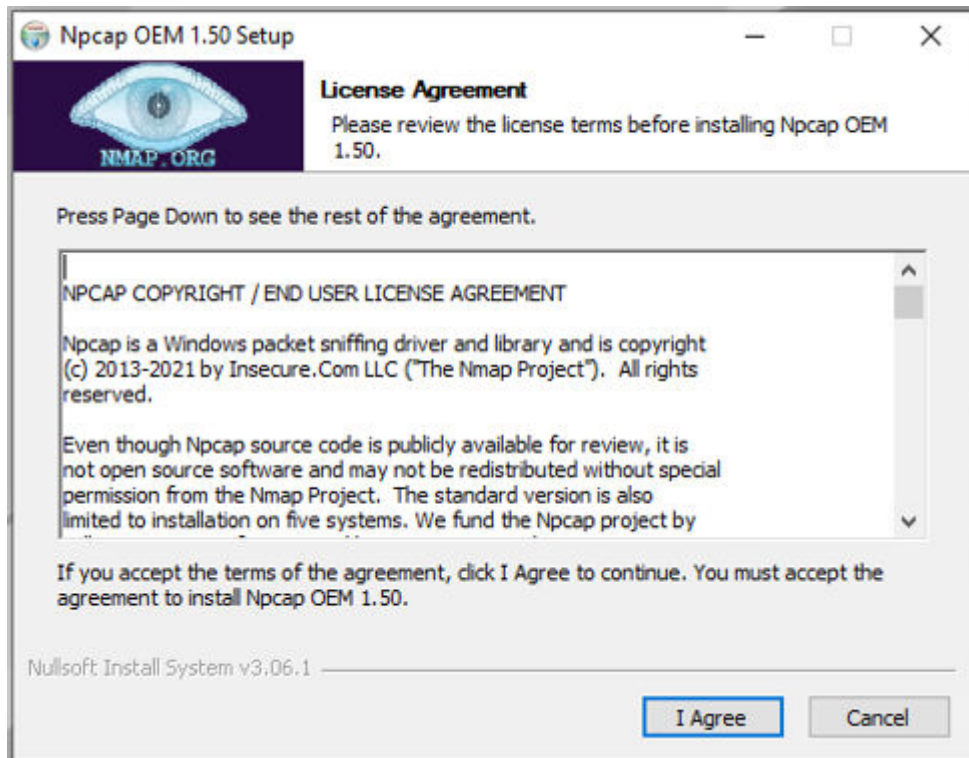


Figure 3: Npcap License Agreement

After accepting the license agreement, installation options will be shown.

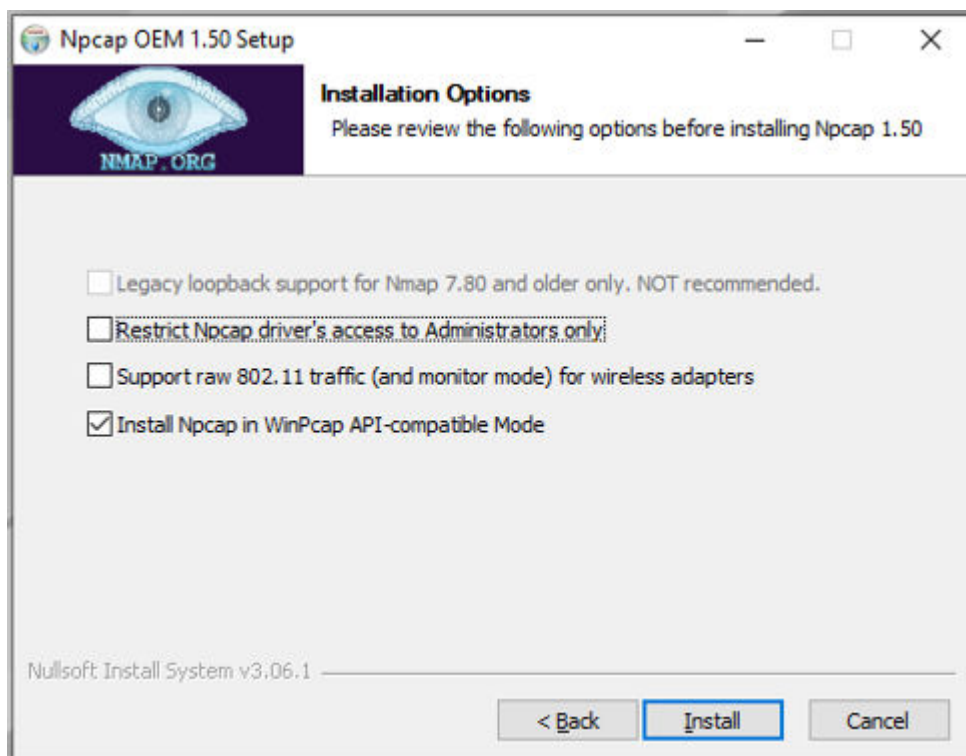


Figure 4: Npcap Installation Options



WinPcap compatibility option should be enabled for the older versions of ITT600, but it is not obligatory for the new version.

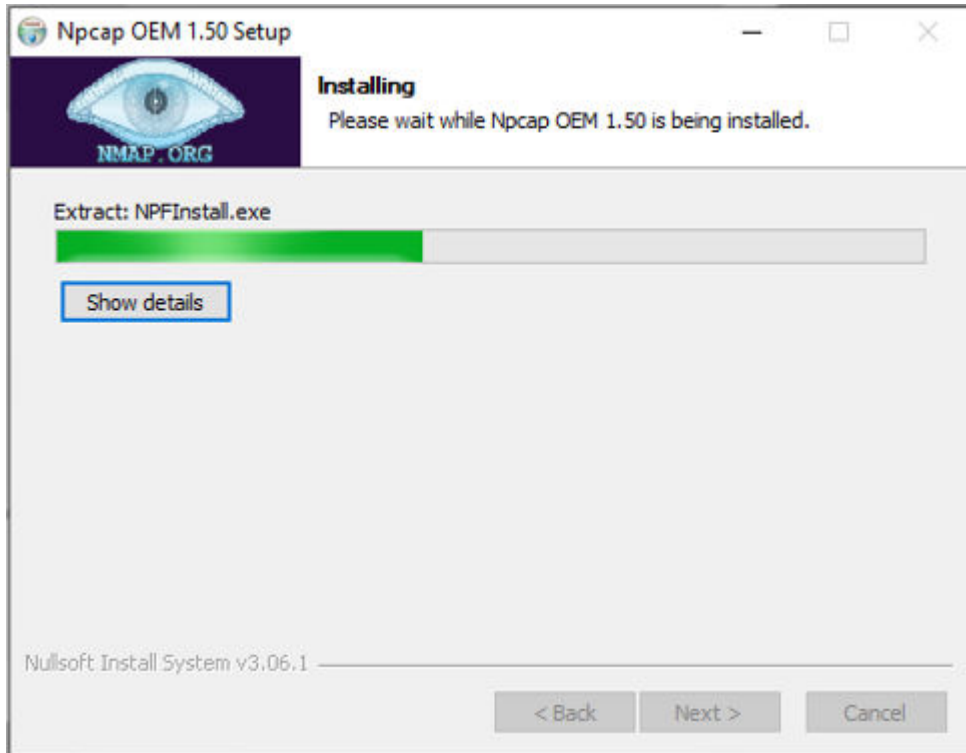


Figure 5: Npcap Installation

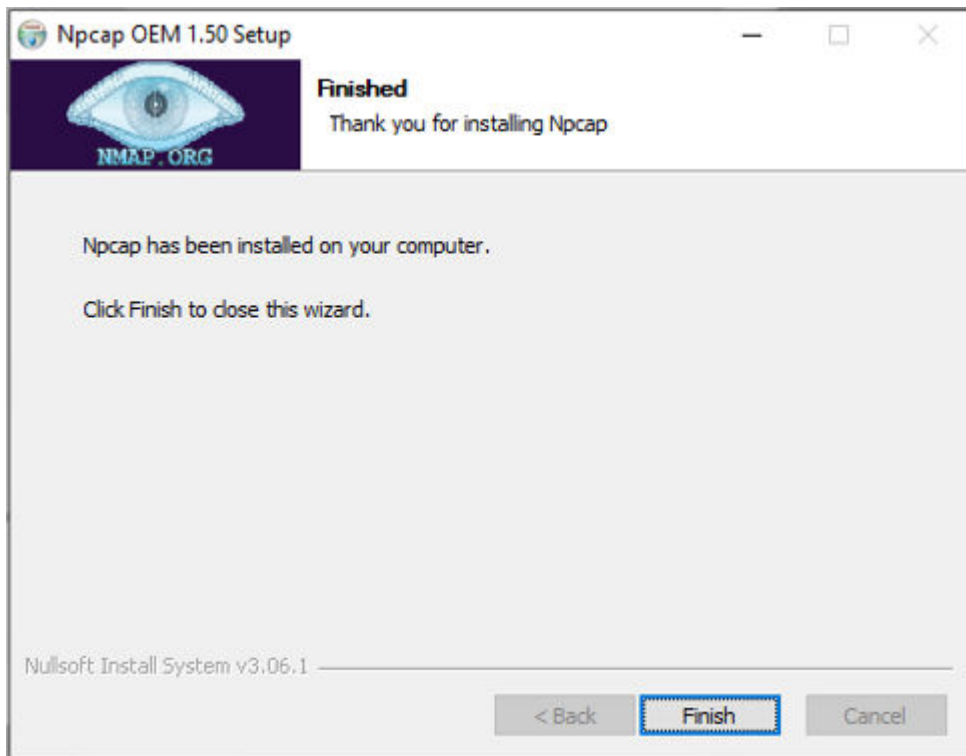


Figure 6: Npcap Installation Finished

The rest of prerequisites will be installed automatically during the setup.

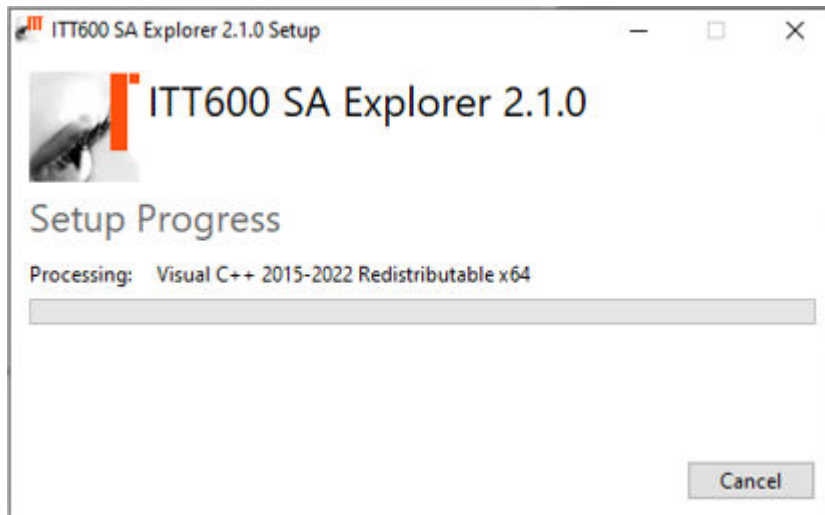


Figure 7: ITT600 SA Explorer Installation Start

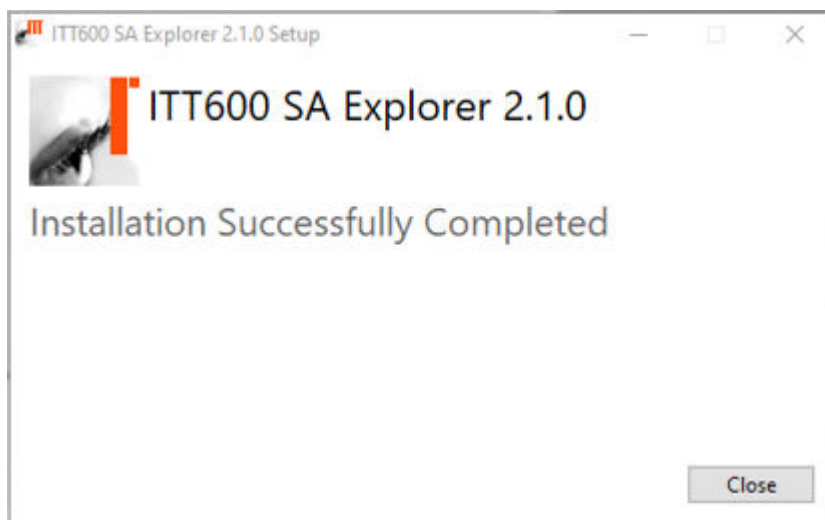


Figure 8: ITT600 SA Explorer Installation Completed

1.3 Licensing of ITT600 SA Explorer

After the Installation of ITT600 SA Explorer a license is necessary in order to use the software.

ITT600 SA Explorer V2.1.0 comes with a USB hardware license key that acts as a hardware based protection key (see [Figure 9](#)). Unlike the former version of the ITT600 SA Explorer, users do not need to request and activate the license anymore. The USB hardware license key allows users to use the software immediately after the installation is completed. In order to use the ITT600 SA Explorer V2.1.0, simply insert the USB hardware license key to the available USB drive on the installed computer.



Figure 9: ITTT600 SA Explorer USB software license dongle



One ITTT600 SA Explorer USB hardware license key can only be used to run ITTT600 SA Explorer application on one computer at one time.

1.4 Folder Structure

Per default ITTT600 SA Explorer will be installed into the **Program Files** folder of your computer.

All files created during usage of the tool will be saved into the **AppData/Roaming/ABB/ITTT600 SA Explorer/2.1.0.x/** folder.

1.5 Uninstall ITTT600 SA Explorer

Should the unexpected event occur that ITTT600 SA Explorer has to be uninstalled, open the Control Panel's Programs and Features. Select ABB ITTT600 SA Explorer and choose **Uninstall**.

Section 2 Other Applicable Documents

This document is a complement document to the ITT600 SA Explorer User Manual (1MRK512006-UEN-ITT600 SA Explorer.pdf) where operational and troubleshooting of the ITT600 SA Explore software are described.

The manual can be opened from the start menu or the help menu in the tool.

Hitachi Energy Sweden AB
Grid Automation Products
SE-721 59 Västerås
Phone +46 (0) 10 738 00 00
E-Mail: contact-us@hitachienergy.com

<https://hitachienergy.com/substation-automation>



Scan this QR code to visit our website