

INSTALLATION MANUAL

**Stanilite®**  
**Platinum Spitfire® LED weatherproof**  
 110Vdc non-maintained



This document covers	What's inside the box
Safety warning	Spitfire LED weatherproof
Installation instructions	Accessory kit
Removal instructions	Installation manual
Testing precautions	Warranty information
Troubleshooting guide	

**Thank you for choosing ABB product**

Please read this document thoroughly before commencing installation and retain for future reference. Contact ABB customer service in Australia on 1800 60 20 20 if you need any assistance. The installation instructions were correct at the time of print. To reflect changes in technology and Australian standards; ABB reserves the right to amend the instructions without notice. Updated document can be found on the Stanilite website.

**Safety warning**

In Australia and New Zealand, only licensed electricians are permitted by law to work with 240 volt electrical installations. Do not attempt to install or connect this product unless you are a licensed electrician. Turn off and isolate the electrical supply before connecting this fitting to the building wires.

Do not touch the terminals of the terminal block when the light fitting is energised. The only user-serviceable parts are the lamp head assembly.

Do not attempt to service other parts of the fitting as this will void the warranty.

As the installer, it is your responsibility to ensure compliance with all relevant building and safety codes, (ie: AS/NZS 3000, AS/NZS 2293). Refer to the applicable standards for cabling installation procedures and requirements.

**Important to note:**

- This product is designed for indoor and outdoor use.
- Not suitable for installations where exposure to direct sunlight may occur.

**ABB Australia Pty Limited**


For enquiries  
 ABB contact centre: 1800 60 20 20  
 E-mail: AU-ABB-Stanilite@abb.com



### Installation instructions

**Important: The mounting holes are at the same location as the lid's screws. The holes centre distance is 167 x 257mm. If the mounting holes are drilled through the enclosure, the installer must seal the holes with suitable sealant to maintain the enclosure IP rating integrity.**

1. Undo 4 screws and remove the transparent lid.
2. Remove the top plate from the gear tray by unscrewing 2 screws.
3. Unscrew 4 screws from the gear tray then remove the gear tray and top plate assembly completely from the enclosure. Decide on the mains entry (back or side) then drill a cable entry hole to suit the conduit or cable gland size. Remove all burrs and sharp edges around the cable entry hole and make sure the enclosure is free of dust. For cable side entry; the hole centre is 25mm from the base.
4. Determine the mounting location, hold the enclosure in position and secure it in place by appropriate M4 screws (due to the wide variety of building construction materials, fasteners are not supplied). Make sure the mounting screws are fixed into solid material that is strong enough to support the weight of the fitting which is approximately 4kg.
5. Re-install gear tray to the enclosure.
6. Run mains cable inside the fitting as appropriate.
7. Terminate mains wires to the terminal block. Be careful with multi-strand conductors that all the strands are twisted together before insertion into the terminal block. Any stray strands that inadvertently come into contact with their neighbouring terminal will cause undesirable results when fitting is powered.

Wire/fitting type	Maintained - no SA
Unswitched active	Wire to terminal A
Neutral	Wire to terminal N
Earth	Wire to terminal E or 

8. Connect the lamp head cable to the control pack, if not connected and re-install the top plate.
9. Check operation of the fitting to ensure that the installation was successful. Once powered up, observe the operation of the lamp switching from mains to the emergency mode. If the lamp on emergency mode does not work, check the supply, the connections and follow the instruction given in the troubleshooting guide at the end of this document.
10. If the installation is successful, secure the lid to the enclosure. Ensure to tighten the lid's screws properly to maintain the enclosure IP rating integrity.

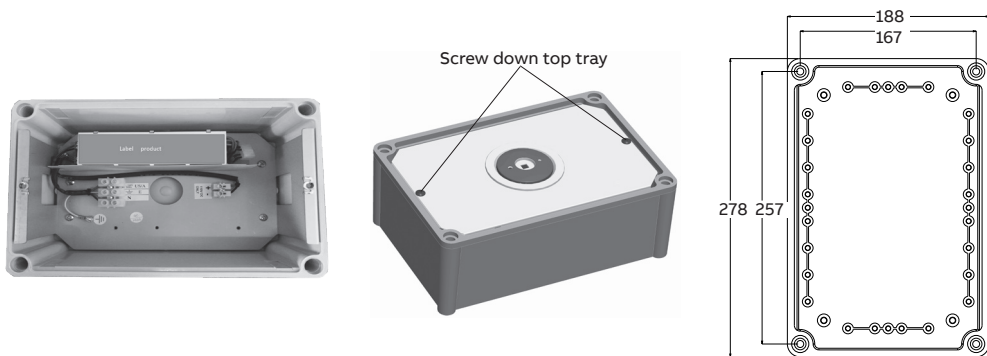


Figure 1: Spitfire LED weatherproof fitting

**Important: As the installer, it is your responsibility to conduct the initial discharge testing of the installed fitting. Refer to AS/NZS 2293.**

### Removal instructions

1. Before removing the installed fitting, de-energise and lock off the mains and 110Vdc supply circuit.
2. Remove the lid, disconnect the mains cable connection from the terminal block.
3. Undo the mounting screws and remove the fitting from ceiling.

### Testing precautions

Once the fitting is permanently connected to the mains supply, a commissioning discharge test as required in AS/NZS 2293.2 must be carried out. Presently (at the time of writing), the standard requires that fittings operate in emergency mode for a period not less than 2 hours for their commissioning test and for not less than 90 minutes thereafter (it is required that 6 monthly discharge tests be carried out). You will need to keep the records for the commissioning test and enter them into the building emergency services logbook or via other recording methods as allowed by AS/NZS 2293.2.

### Construction sites

Continuously switching off the mains power supply that is connected to emergency light fittings during the construction phase of an installation will cause these fittings to discharge many times over a short period; this can shorten life of the battery. ABB does not recommend such practices and may not honour the warranty. Emergency light fittings are designed to be discharge tested once every 6 months as per AS/NZS 2293.2, subjecting the product to repeated discharge or charge cycles is regarded as an abuse of the fittings.

### Troubleshooting guide

If you have installed and connected the fitting as per the instructions listed earlier and it does not function correctly, use the following table as a guide to fixing the problem. Look up the type of fault in the left column and check the possible causes from the right column.

If the fitting still does not work after checking these possible causes, contact ABB customer service in Australia on 1800 60 20 20.

No.	Fault	Possible causes
1	LED light source and indicating LED not lit	AC supply not connected; <b>or</b> AC supply turned off; <b>or</b> Test switch damaged
2	LED light source is lit but indicating LED not lit	Test switch damaged; <b>or</b> Battery not connected or faulty
3	LED light source does not switch to emergency mode when the test button is pressed	Test switch damaged; <b>or</b> Battery not connected or faulty
4	LED light source works momentarily on emergency when the test button is pressed	Battery not yet charged (allow up to 24 hours)