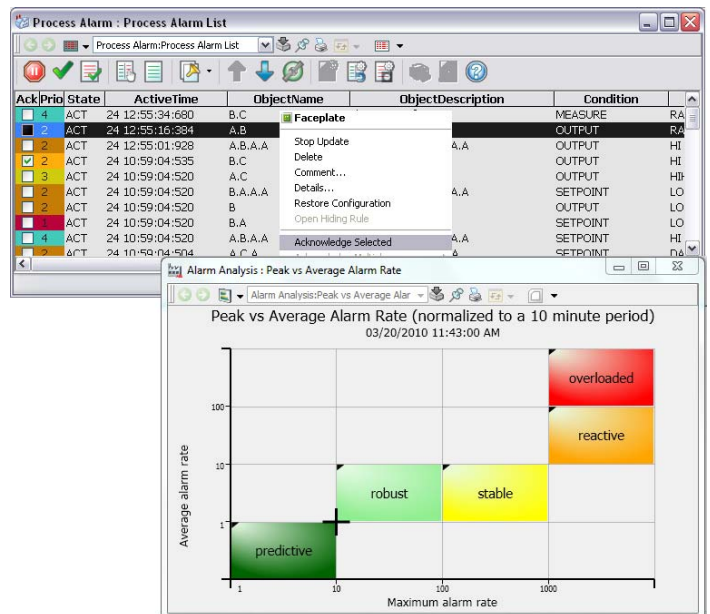


# Alarm management - Health Check

Expert alarm management provides support to plant operators and ensures safe processes

Health Check offers prompt and focused assessments of the effectiveness of alarm systems, irrespectively of their manufacturers and technologies.

An assessment in accordance with EEMUA 191 guidelines gives you the results you need in order to optimize your alarm system.



## Alarm management guide EEMUA 191

The guidelines and specifications in this guide by the Engineering Equipment and Materials Users Association form the foundation for Health Check alarm management.

## EEMUA 191 guidelines

Under normal operation, the average alarm duration over extended periods should not exceed a period of 10 minutes.

The number of alarms within the first 10 minutes of a major system failure should amount to less than ten.

Alarms should be prioritized as follows: 5% as high, 15% as medium, and 80% as low.

## Alarm systems and ways to optimize them

There are numerous cost-efficient ways to optimize alarm systems. Prioritizing, grouping, inhibiting, disabling, and reducing alarms, or tuning processes, instrumentation, control, and P&ID are just a few of them. Health Check works to identify the ones with the best cost-benefit ratio for you.

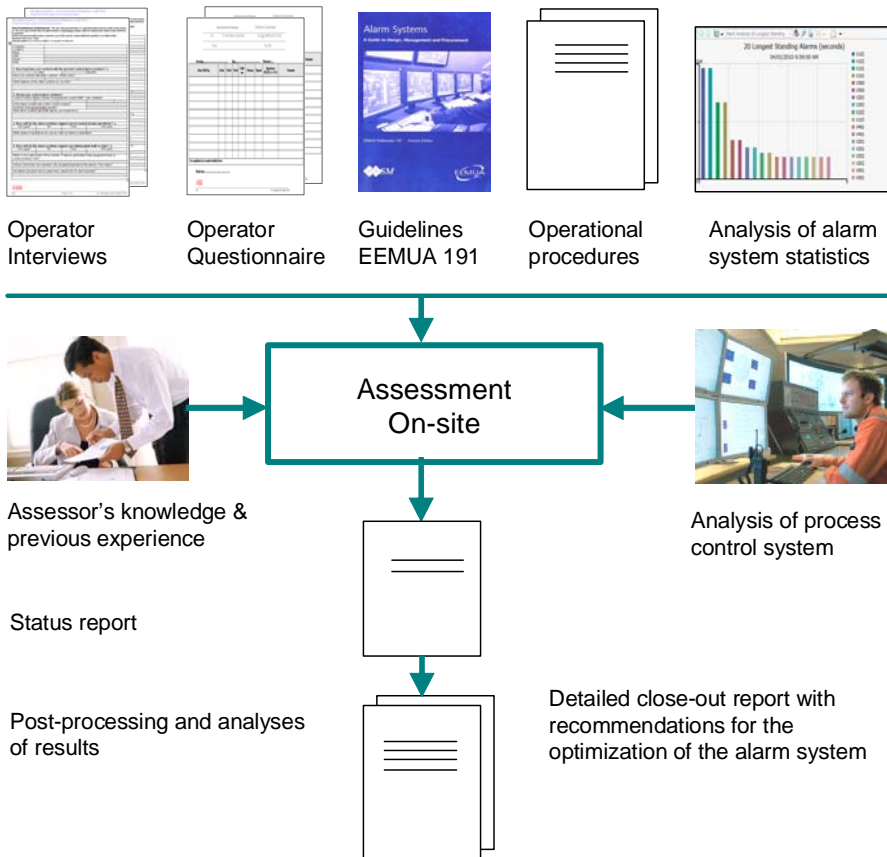
## Advantages of an optimized alarm system

- Reduced costs and downtime
- Increased user attention
- Critical alarms impossible to miss
- Fewer unplanned standstills
- No damage to system

## Health Check process for alarm systems

Health Check is a process performed by two persons. The preliminary phase involves gathering and analyzing information from clients, including their alarm statistics. This is followed by detailed on-site assessments along with user surveys for these clients. In the post-processing phase, all results are analyzed and compiled into final reports including recommendations for optimizing their alarm systems.

Count on the know-how of our specialists by having them analyze your alarm management!



### Health Check process for alarm systems

Health Check is a process performed by two persons.

#### 1. Preliminary phase – four weeks prior to Health Check

- Dispatch of information questionnaires to clients
- Compilation of alarm logs from client systems
- Evaluation of questionnaires and procedures
- Analyses of alarm logs
- Detailed analyses of alarm statistics

#### 2. Assessments for clients on site - approx. two days

- Analyses of alarm systems
- Analyses of operational procedures
- Surveys among plant operators
- Surveys among operations management
- Status reports

#### 3. Post-processing and analyses of results

- Summaries of results in final reports
- Recommendations for optimizing alarm systems

### Optimize your alarm system -

Count on us to analyze your alarm management

For more information, please contact:

#### ABB Automation GmbH Service Control

Stierstädter Str. 5  
60488 Frankfurt, Germany  
Customer Service Center: +49 180 5 222 580\*  
automation.service@de.abb.com

www.abb.com

\* 14 euro cents/min. using German landline,  
max. 42 euro cents/min. using German mobile service