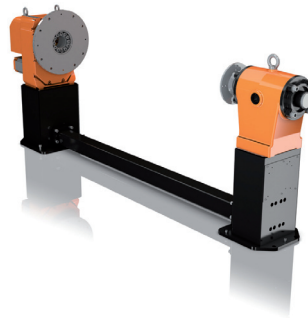
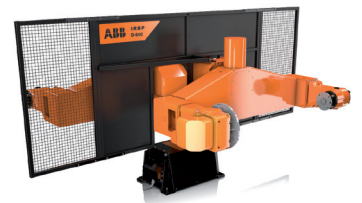
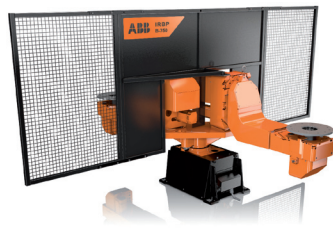


Workpiece positioners The new generation



The ABB positioners are optimized to be used for manipulating of workpieces in arc welding, thermal cutting and other applications. All axes can be fully coordinated with the robot when programming as well as during operation.

There are seven different models to choose from.

IRBP A	250 – 750 kg
IRBP B	250 – 750 kg
IRBP C	500 – 1000 kg
IRBP D	300 – 600 kg
IRBP K	300 – 1000 kg
IRBP R	300 – 1000 kg
IRBP L	300 – 5000 kg

www.abb.com/robotics