

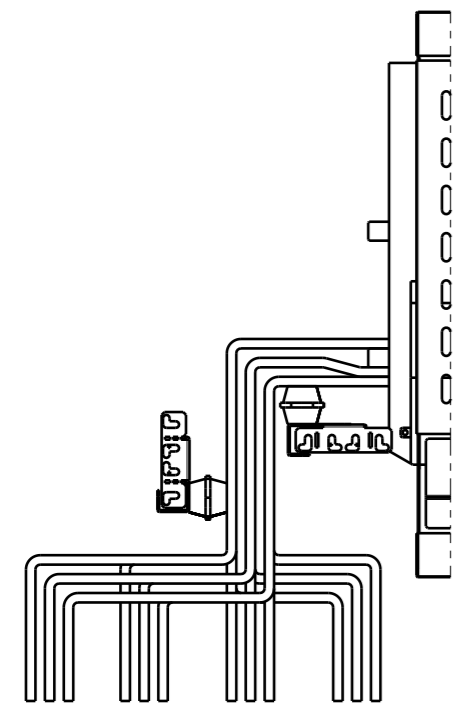
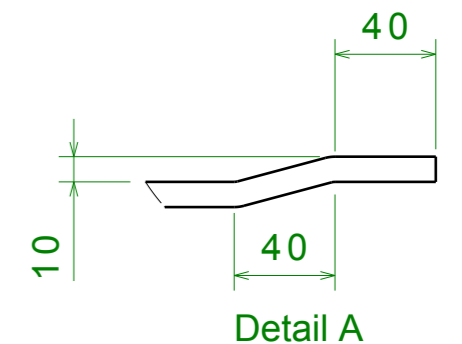
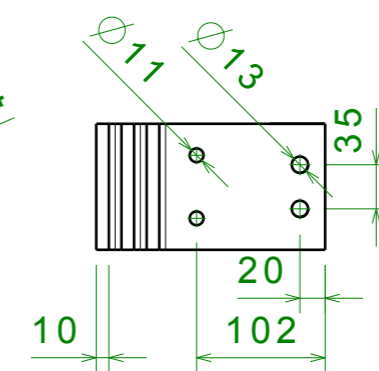
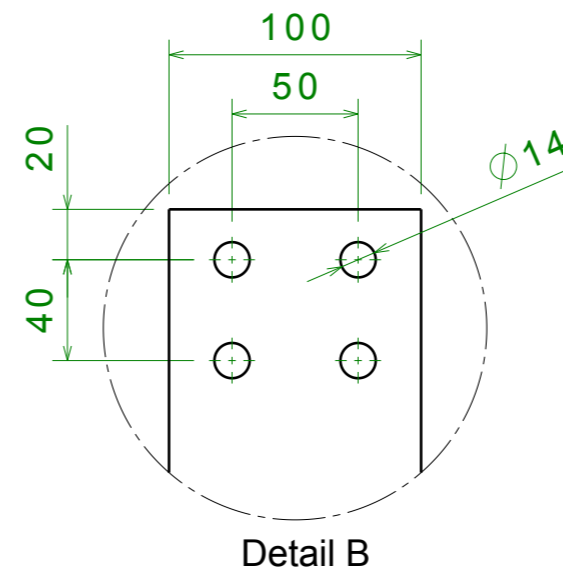
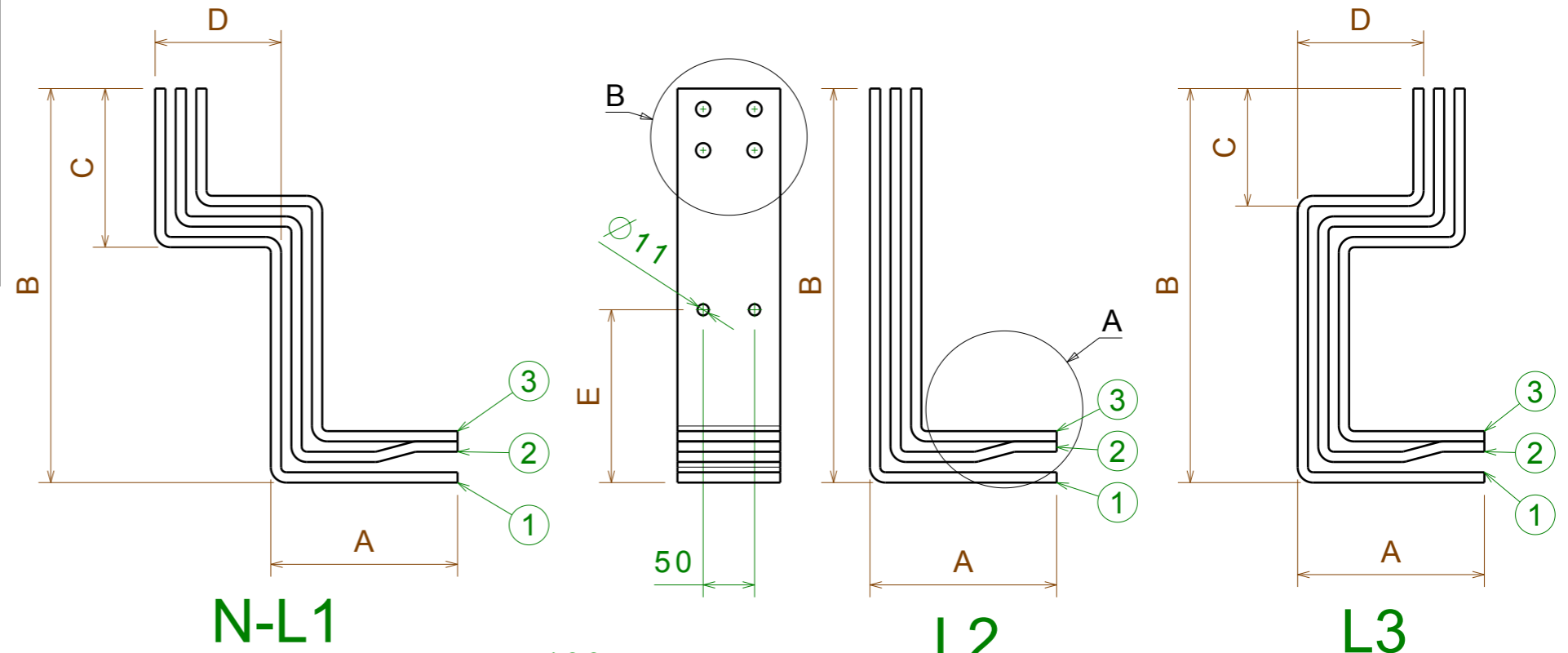
**MAIN  
BUSBARS  
UP**

# CONNECTIONS FOR E4.2 WITHDRAWABLE 3200A

## I<sub>cw</sub> > 36KA

SPEP P = 900mm  
 BUSBARS HOLDER PBHB2145 (75mm)  
 MAIN BUSBAR IP30 / IP31 : 3200A (2x100x10)

PHASE	POS	A	B	C	D	E
L3	1 L3.1	181.6	383	114.25	122.5	168
	2 L3.2	161.6	363	134.25	122.5	138
	3 L3.3	141.6	343	154.25	122.5	128
L2	1 L2.1	181.6	383	-	-	168
	2 L2.2	161.6	363	-	-	138
	3 L2.3	141.6	343	-	-	128
L1	1 L1.1	181.6	383	154.25	122.5	168
	2 L1.2	161.6	363	134.25	122.5	138
	3 L1.3	141.6	343	114.25	122.5	128
N	1 N.1	181.6	383	154.25	222.5	168
	2 N.2	161.6	363	134.25	222.5	138
	3 N.3	141.6	343	114.25	222.5	128



**MAIN  
BUSBARS  
DOWN**

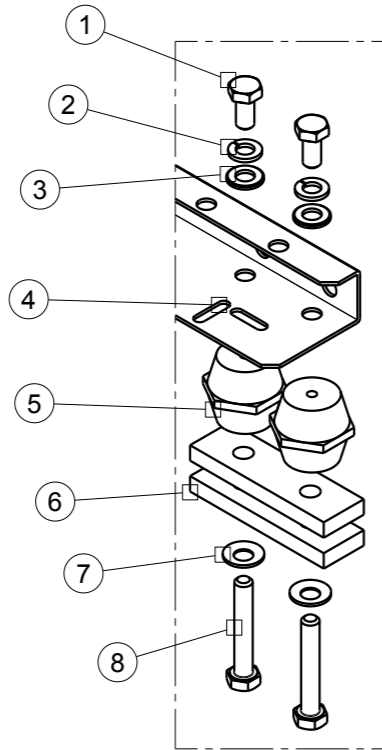
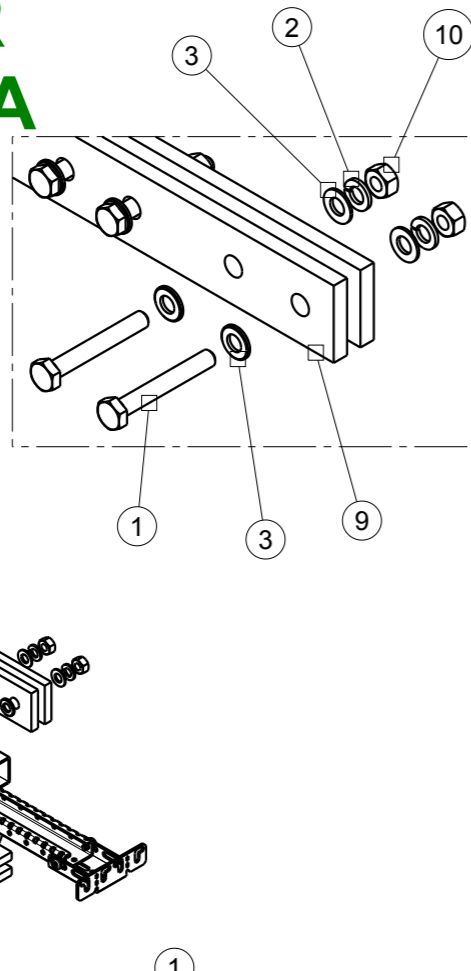
AGG. DI SEGNO	SCALA SCALE	: 1:6	N° PROGETTO PROJECT	XXX.XX
DESIGNER	DISEGNATORE DESIGNER		ABB SACE ADB	
APPROVAZIONE APPROVAL	DATA DATE	: xx-xx-xx	DISEGNO N° /DRAWING N°	
MODIFICA	FORMATO FORMED	A3	E4.2 3200A W CONNECTION BUSBARS 3x100x10xP	
DATA			8 6 3 6 9 6	

# HOLDER FOR 36<I<sub>cw</sub><=50KA

Vista isometrica  
Scala: 1:8

## BOM 36<I<sub>cw</sub><=50KA

POS	DESCRIPTION
1	HEX CAP SCREWS M10x16 - 8.8 (VITE TESTA ESAGONALE M10x16 - 8.8)
2	FLAT WASHER M10 (RONDELLA PIANA M10)
3	SPRING LOCK WASHER M10 (ROSETTA ELASTICA GROWER M10)
4	BRACKET FOR INSULATOR (STAFFA ISOLATORI)
5	INSULATOR H40 M10 (ISOLATORI H40 M10)
6	CUPPER SPACER H10mm (SPESSORE IN RAME H10mm)
7	CONICAL SPRING WASHER M10 (ROSETTE ELASTICHE CONICHE M10)
8	HEX CAP SCREWS M10x__ - 8.8 (VITE TESTA ESAGONALE M10x__ - 8.8)
9	GPO3 PROFILE
10	NUT M10 - DADO M10

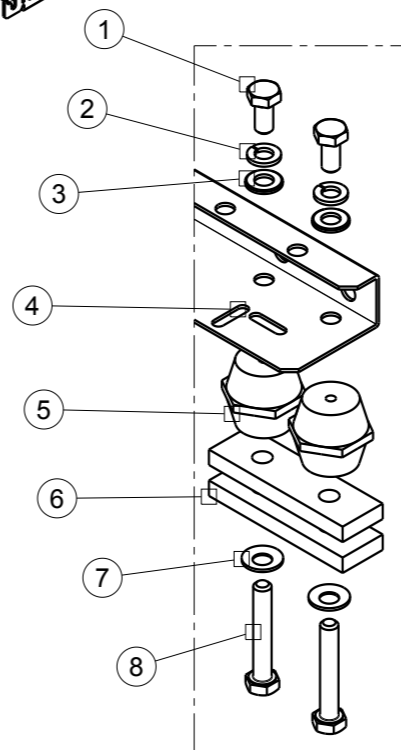
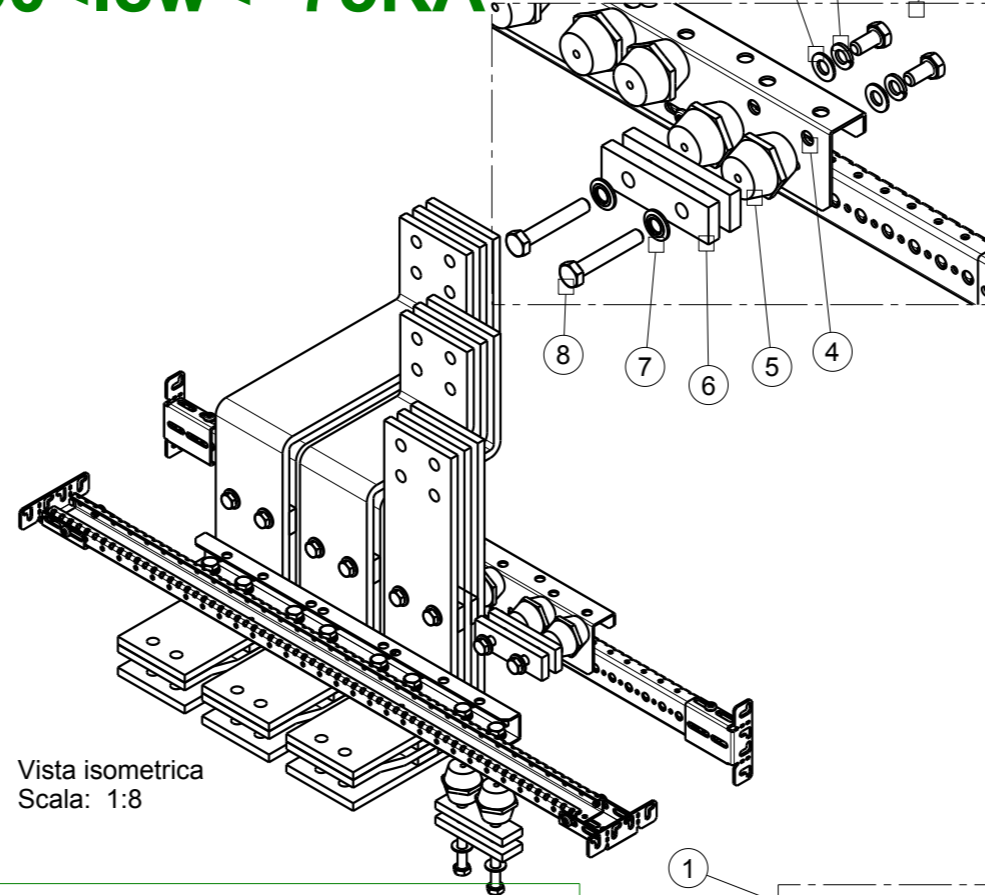


# HOLDER FOR 50<I<sub>cw</sub><=75KA

Vista isometrica  
Scala: 1:8

## BOM 50<I<sub>cw</sub><=75KA

POS	DESCRIPTION
1	HEX CAP SCREWS M10x16 - 8.8 (VITE TESTA ESAGONALE M10x16 - 8.8)
2	FLAT WASHER M10 (RONDELLA PIANA M10)
3	SPRING LOCK WASHER M10 (ROSETTA ELASTICA GROWER M10)
4	BRACKET FOR INSULATOR (STAFFA ISOLATORI)
5	INSULATOR H40 M10 (ISOLATORI H40 M10)
6	CUPPER SPACER H10mm (SPESSORE IN RAME H10mm)
7	CONICAL SPRING WASHER M10 (ROSETTE ELASTICHE CONICHE M10)
8	HEX CAP SCREWS M10x__ - 8.8 (VITE TESTA ESAGONALE M10x__ - 8.8)
9	GPO3 PROFILE

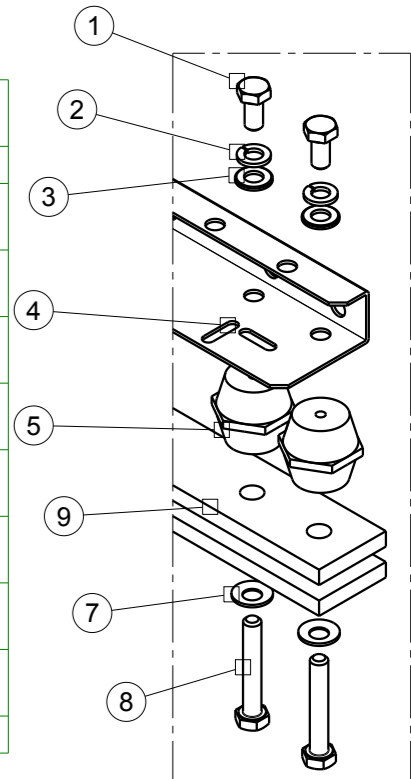
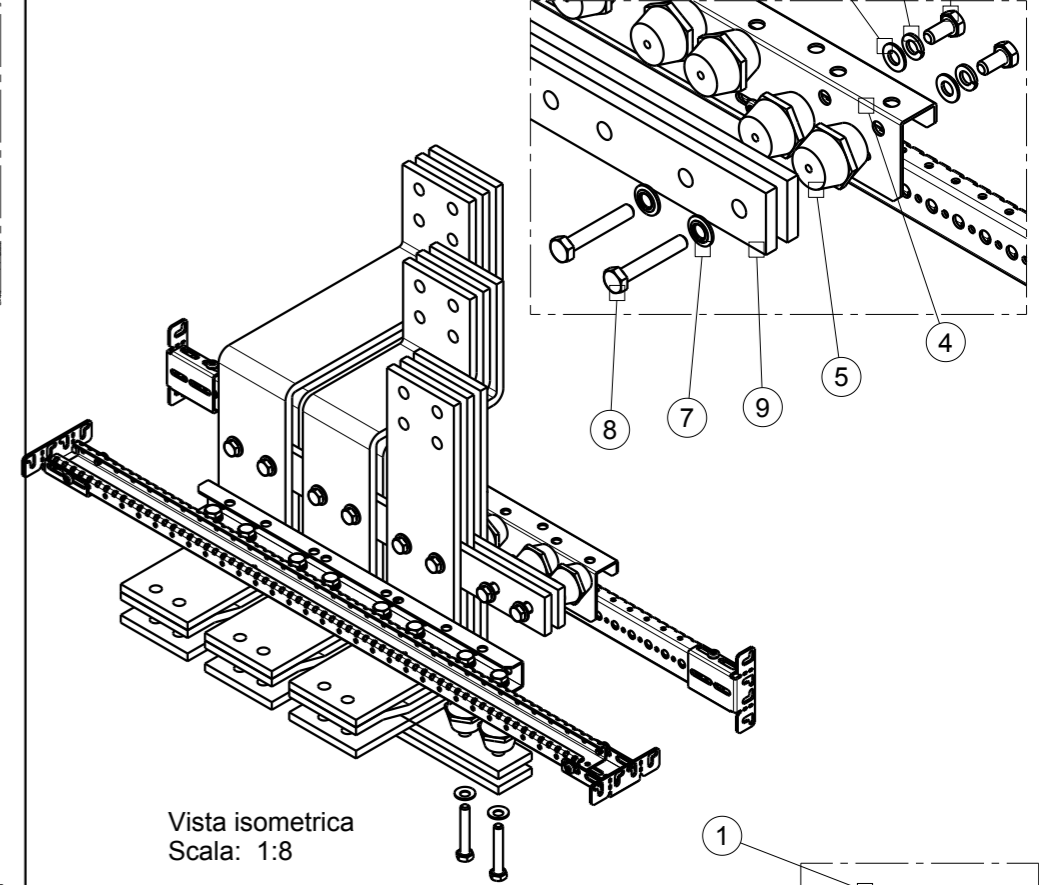


# HOLDER FOR I<sub>cw</sub> >75KA

Vista isometrica  
Scala: 1:8

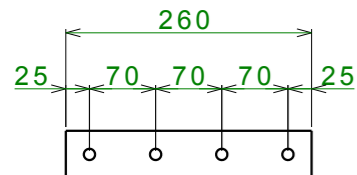
## BOM I<sub>cw</sub>>75KA

POS	DESCRIPTION
1	HEX CAP SCREWS M10x16 - 8.8 (VITE TESTA ESAGONALE M10x16 - 8.8)
2	FLAT WASHER M10 (RONDELLA PIANA M10)
3	SPRING LOCK WASHER M10 (ROSETTA ELASTICA GROWER M10)
4	BRACKET FOR INSULATOR (STAFFA ISOLATORI)
5	INSULATOR H40 M10 (ISOLATORI H40 M10)
6	CUPPER SPACER H10mm (SPESSORE IN RAME H10mm)
7	CONICAL SPRING WASHER M10 (ROSETTE ELASTICHE CONICHE M10)
8	HEX CAP SCREWS M10x__ - 8.8 (VITE TESTA ESAGONALE M10x__ - 8.8)
9	GPO3 PROFILE

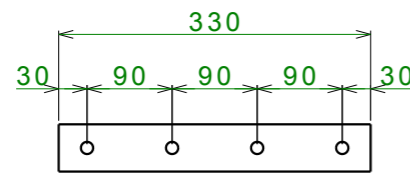


### GPO3 PROFILE

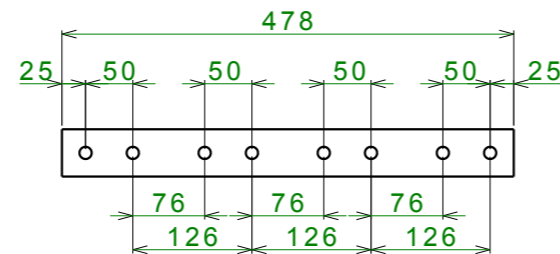
#### E1.2 4P



#### E2.2 4P



#### E4.2 4P



801

FIG.

DIMENSIONI / DIMENSION

PESO / WEIGHT

mm

UNITA' DI MISURA  
UNITS OF MEASUREMENT

AGG. DI SEGNO DISTR. MOD.	SCALA SCALE	MAT. / MAT. :
VERSIONE VERSION	DISEGNATO DA DRAW BY	TRATT. / TREAT :
DATA DATE	APPROVAZIONE APPROVAL	PROGETTO N° : PROJECT N° : 142.00
	ABB	ABB SACE ADB
	Formato Format A3	DESCRIZIONE / DESCRIPTION: DIVERSI TIPI DI ANCORAGGIO DIFFERENT TYPES OF SUPPORT

DISEGNO N° / DRAWING N°

**863877**