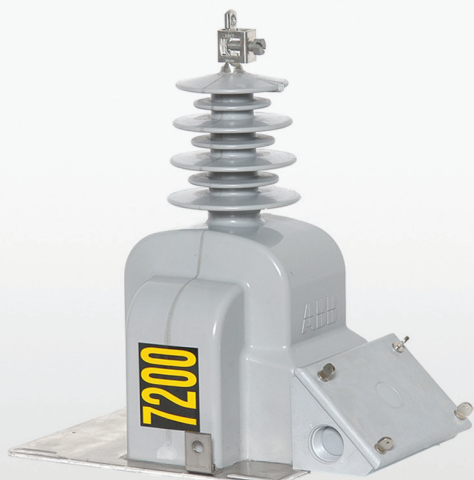


## VOG-11

### Outdoor voltage transformer



#### Key features

- 15 kV, outdoor
- 110 kV BIL, 60 Hertz
- Primary volts: 7200 - 8400
- Electrical clearances:
- Strike: 10.3" (262 mm)
- Creep: 24.7" (627 mm)
- Approximate weight: 45 lbs (20 kg)
- Minimum operating temperature: -50° C

#### Application

The VOG-11 is a compact outdoor voltage transformer designed for metering and power supply in 15 kV line-to-ground applications. Power supply applications may include secondary protection and control apparatus, such as controllers and other IEDs that can be found on other equipment (for example, reclosers). The single centered bushing and reduced neutral end insulation permit a significant reduction in size and installation spacing while maintaining full 110 kV BIL insulation clearances.

#### Construction features

For insulation and protection, the assembly is cast in hydrophobic cycloaliphatic epoxy (HCEP) using automatic pressure gelation. The HCEP material

The VOG-11 is a compact outdoor voltage transformer designed for metering and power supply in 15 kV line-to-ground applications.

offers superior arc track, ozone, and ultraviolet-resistive properties while maintaining physical strength. The hydrophobic surface properties of HCEP ensure highly reliable performance in wet, humid, or polluted environments.

#### Terminals

The electro-tin plated primary H1 bushing terminal accommodates #10 to 250 MCM conductors. The H2 neutral terminal is insulated to withstand a 10 kV test level. It can be disconnected from the external ground cable for power factor measurement. The ground connection can be rotated 90° for ease of connection.

Clamp-type secondary terminals accommodate #14 through #3 wire. A ground terminal is also provided for grounding the secondary circuit at the transformer.

#### Junction box

The junction box has a 1" conduit hub on either end and a knock out for a 1" conduit fitting on the bottom. The box is anchored to the body of the transformer with screws and can be easily detached, simplifying installation and change-out procedures.

## Baseplate

The base is constructed of corrosion-resistant aluminum and secured to the encapsulated base support by symmetrically located screws.

## Mounting

The VOG-11 can be mounted in upright, cantilever, or upside down positions. Stress relief devices should be used to support cable connections. For more installation guidance, refer to [medium voltage outdoor voltage transformers 5 - 34.5 kV instructions for installation, use, and maintenance](#).

## Test reports

Test reports are stored electronically and can be e-mailed in various formats at the time of shipment.

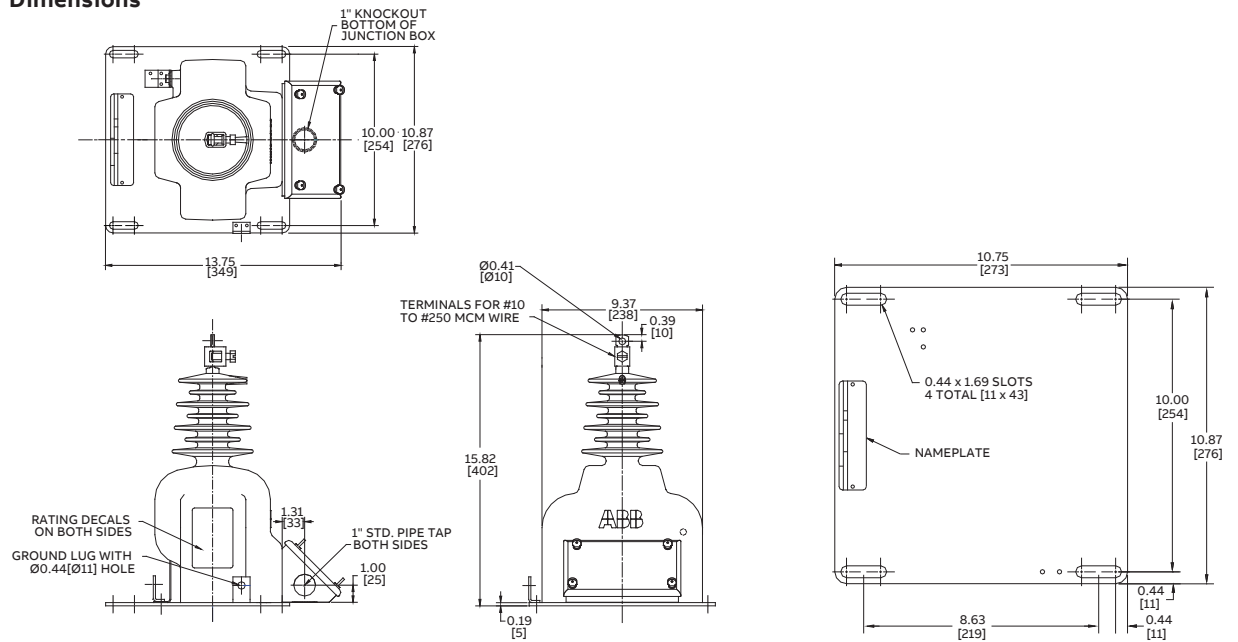
## Standards

This unit meets or exceeds all requirements of IEEE C57.13-2016 and can be tested to other standards as requested.

## Optional accessories

- Vertical mounting with mounting brackets and back-up plates:
  - Mounting bracket: 463C035G02
  - Back-up plate: 28D2876G01
- Vertical mounting with mounting brackets and hangers:
  - Mounting bracket: 463C035G02
  - Hangers: 261A233G01
- Vertical mounting with channel brackets for tandem mounting of voltage and current transformers:
  - Channel bracket: 332B955G02
- Horizontal mounting with hangers:
  - Hangers: 261A233G01

## Dimensions



## Selection guide

Primary voltage	Secondary voltage	Winding ratio	Metering accuracy	Style number
7200/12470GY	120	60:1	0.3 W, X, M, & Y	E-7525A95G01
7620/13200GY	120	63.5:1	0.3 W, X, M, & Y	E-7525A95G02
8400/14560GY	120	70:1	0.3 W, X, M, & Y	E-7525A95G03

Thermal rating at 30° C: 1000

Rated voltage factor (RVF): 1.1

Additional styles available upon request. Contact your ABB sales representative or call +1-252-827-3212 for more information.