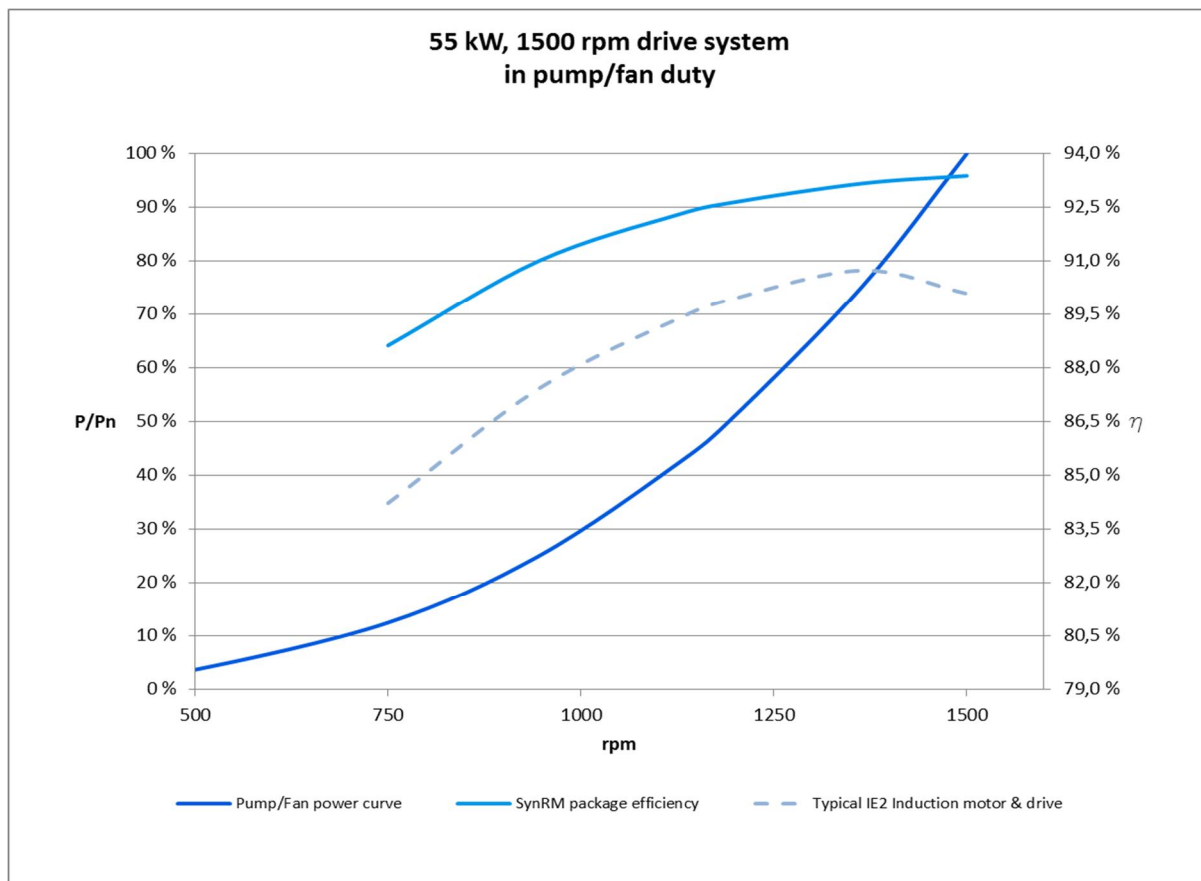


Manufacturer's statement

ACS880-01 and IE4 SynRM motor package efficiency

Drive: ACS880-01-123A-3

Motor: M3BL 250SMA, 3GBL252102-ASC, P_n 55 kW, 1500 rpm



Speed	Speed rpm	P/P _n	Package efficiency
50%**	750	13%**	88.6%
63%	945	25%	91.0%
75%	1125	42%	92.3%
80%	1200	51%	92.6%
91%	1365	75%	93.2%
100%**	1500	100%**	93.4%*

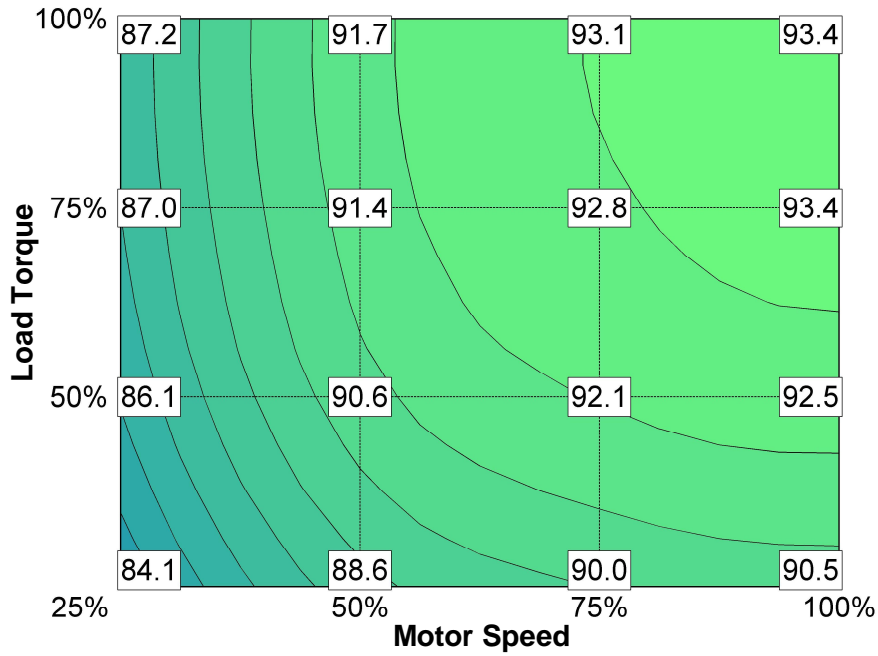
*Estimated tolerance according to IEC 60034-1:

≤150kW: 0.15 x (100 - package efficiency (%)) at the nominal point

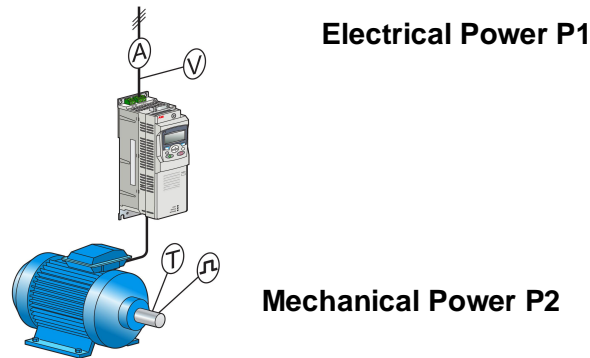
>150kW: 0.10 x (100 - package efficiency (%)) at the nominal point

**Measurement points according to EN 50598-2

Package efficiency [%] for applications with other load characteristics:



Points of measurement



Efficiency $\eta = P2/P1$

Efficiency measurements were made at:

	ABB verification laboratory, Vaasa	X	ABB verification laboratory, Västerås
	ABB verification laboratory, Helsinki		