

NOTES:

1. **WARNING**
Using a non-factory RS232 data cable may result in damage and may void system warranty.
2. All installations in hazardous locations must comply with requirements of certification Drawing 2015246-CD.
3. In Switched Power configuration as shown, the Power Scheduler must be used.

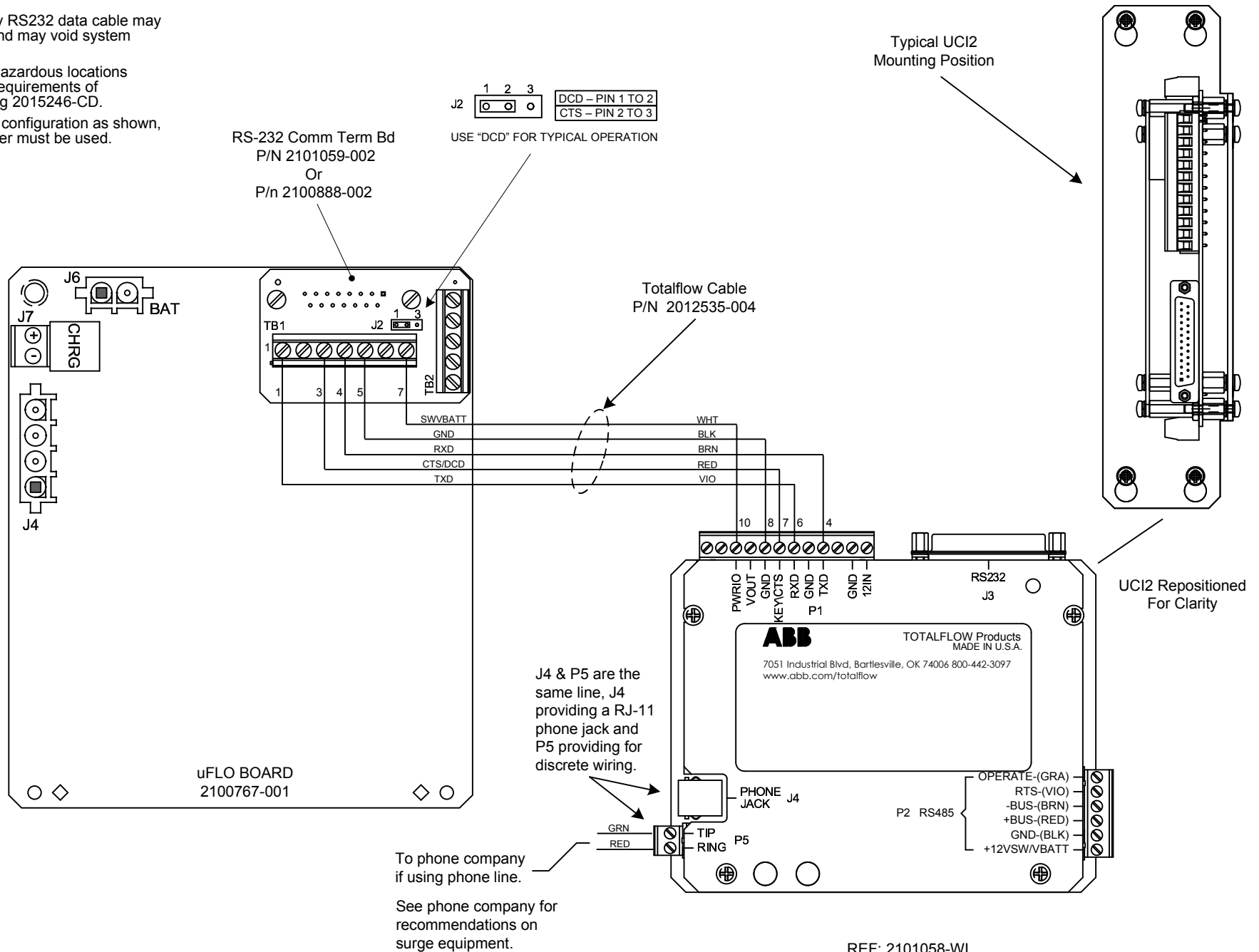


ABB TOTALFLOW Products	ACTION	DOC TYPE	TITLE	DWG NO.	REV	SHEET
	D19348	UD	UFLO W/ RS-232 COM TERM BD TO UC12 W/ INTERNAL SWITCHED PWR	2101725	AB	1 OF 1