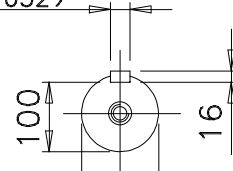
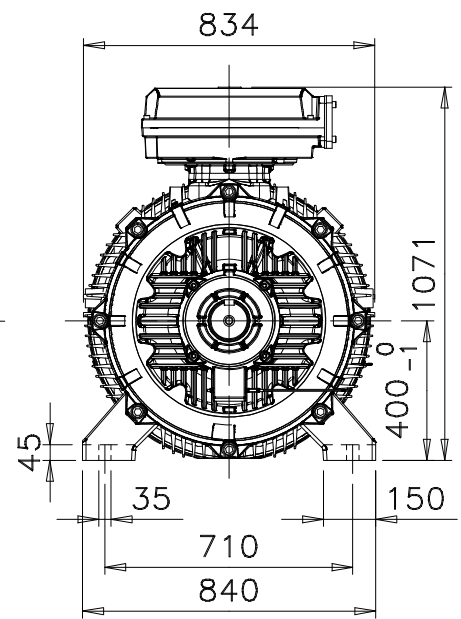
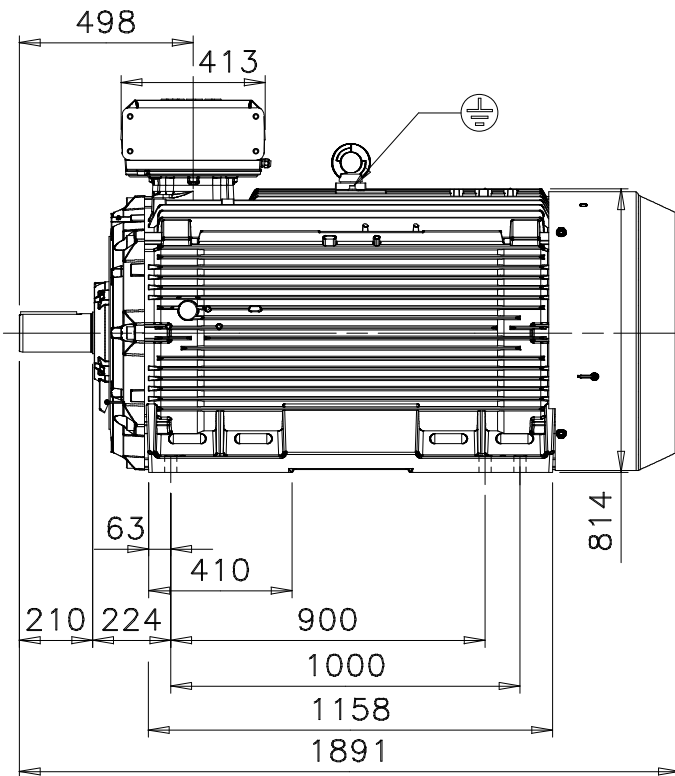


28h9 ( $-\frac{0}{-0.052}$ )



$\varnothing 110m6 (\pm\frac{0.035}{0.013})$



Additional information:

<b>Dimension Print</b>	Motor Type: M3KP400L_4-12 B3, B6, B7, B8, V6	Document No: 3GZF500140-1 A 13 KP 400 A
	Description: STANDARD SQUIRREL CAGE MOTOR	
Unit: Electrical Machines / LV Motors	Issued by: J.Huhtamäki	Replaces:
Date: 13.05.2004	Approved by: M.Sevola	Replaced by:
<b>ABB Oy</b>	Customer Reference:	<b>ABB</b>