

PRODUCT SHEET

Multipurpose non-metallic electrical box

Carlton®



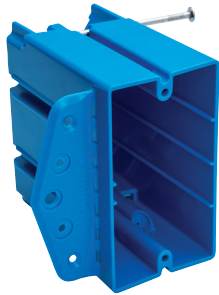
Carlson's most versatile non-metallic box ever

Single- or two-gang designs that work on wood or steel studs; in new or old work; with simple, fast installation; vertical or horizontal

Key features

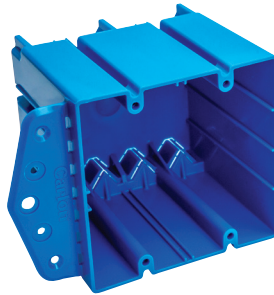
- Captive nails and screw guides—for vertical or horizontal mounting
- Break-off flange—for new or old work
- Large capacity—to hold dimmers and larger switches

All in the same Carlson blue...because blue boxes meet code!



B125AB features

- Carlson's largest standard single gang at 24.5 cu. in.
- New work and old work—stud mount applications
- Suitable for wood and steel studs
- Suitable for horizontal and vertical mounting
- Easy installation with captive nails
- Internal screw guides for installation
- Internal mounts allow to change depth of install
- Flange for new work application
- Break away flange for old work application
- Internal screws (not provided) #6x1.25" minimum
- Accepts wire fill/size: 12/14, 11/12, 10/10



B249B features

- Carlson's largest double-gang at 48.2 cu. in.
- Voltage divider available
- Suitable for old work and new work
- Suitable for wood and steel studs
- Internal screw guides for installation
- Internal mounts allow to change depth of install
- Flange for new work application
- Break away flange for old work application
- Internal screws (not provided) #6x1.25" minimum
- Accepts wire fill/size: 23/14, 20/12, 18/10



SCDIVS features

- For high- and low-voltage closed back box
- Slip-in place divider
- Ideal for fire-rated box



Catalog number	Size (cu. in.)	Mounting means	Description	Dimensions (in.)	Std. ctn.
B125AB	24.5	Captive nails, side flange, internal screws	Mounts to metal or wood stud, horizontally or vertically, new work or old work.	3 ¹⁵ / ₁₆ L x 2 ⁷ / ₃₂ W x 3 ¹³ / ₁₆ D	24
B249B	48.2	Side flange, internal screws	Mounts to metal or wood stud with break-away side flange, new work or old work	3 ¹⁵ / ₁₆ L x 4 ¹ / ₃₂ W x 3 ¹³ / ₁₆ D	12
SCDIVS		Insert into double gang B249B	Low Voltage divider		5

Please ask your Thomas & Betts sales representative for a complete catalog of quality Thomas & Betts electrical products or visit us at www.tnb.com. For customer service, call 1-800-816-7809. For technical questions, call 1-888-862-3289.

© 2018 Thomas & Betts Corporation. All rights reserved.
Printed in the U.S.A.
04/18 GM7840

Thomas & Betts Corporation
Electrification Products
Division of ABB
8155 T&B Blvd
Memphis, TN 38125
901-252-5000
www.tnb.com

Thomas & Betts
A Member of the ABB Group