

CO-9740

Split-core indoor current transformer



The CO-9740 indoor, tape-wound, split-core window-type current transformer offers primary current ratios from 100:5 to 4000:5 at 60 Hz with a rating factor up to 1.5. The unit is convenient to install where the primary conductor cannot be broken or opened. It will operate with reasonable accuracy for metering or relay applications.

Product features

- 600 V, 10 kV BIL, 105 °C, 60 Hz
- Indoor
- Single ratios
- Tape-wound, split-core
- Designed for mounting over large cables or insulated bus

Mechanical description

The windings are high temperature-resistant magnet wire wound on three legs of a rectangular cut core wrapped in polyester tape. Window sizes are available in standard 2.75, 5.5 and 9.0 inch square openings.

After assembly, the tape-wound core and coil are impregnated with a black insulating varnish to prevent moisture penetration, control vibration and increase dielectric strength.

The core is in two completely removable halves, joined by a stainless steel strap and worm gear. It is marked to ensure correct alignment during reassembly. The secondary terminals are #10–32 zinc-plated screws.

Accuracy performance

The CO-9740 provides up to 0.3 class accuracy for metering with burdens of B-0.1 to B-1.8, and up to C400 for some relay applications (see ratings specific to each ratio). The transformer is accurate through its rating factor and can be used continuously to this level.

Mounting

The CO-9740 is designed for mounting over large cables or insulated bus and may rest against a 600 volt conductor or on a nearby mounting surface. For best results, ABB recommends that the unit be centered around the conductor.

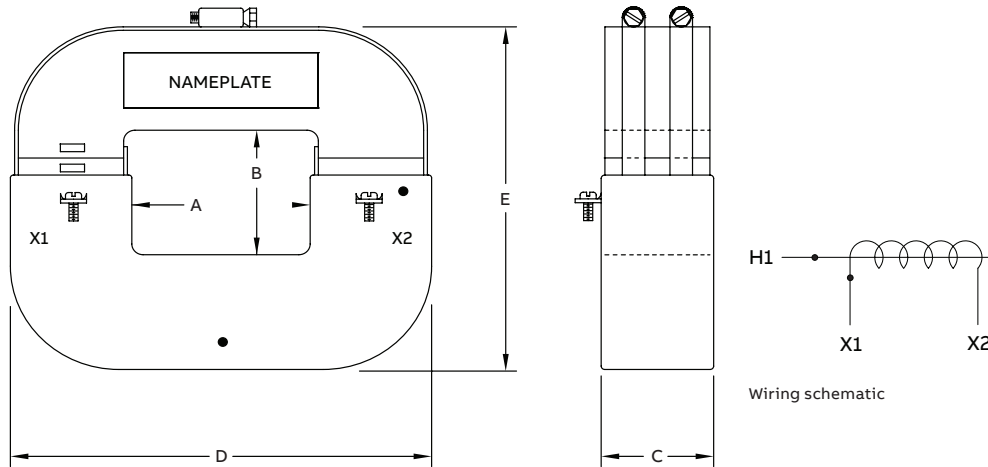
Testing

This unit can be tested to all applicable IEEE, CSA or IEC standards as requested.

Options

The CO-9740 is available with a mounting base, in non-standard window sizes and in outdoor versions for certain applications. The unit can be certified for revenue metering on site once the two halves are reconnected. Contact factory for other needs.

Unit dimensions



Model	Window dimensions	Depth	Outer dimensions	Approx. weight (lbs) [kg]
	A and B (min.)	C (max.)	D and E (max.)	
A19R27	2.75" [70 mm]	4.5" [115 mm]	6.0" [153 mm]	20 [9]
A19R55	5.5" [140 mm]	4.5" [115 mm]	8.75" [222 mm]	27 [12]
A19R90	9.0" [229 mm]	4.5" [115 mm]	12.63" [320 mm]	40 [18]

Selection guide

Primary amps	Style number	IEEE metering accuracy	Relay accuracy	Rating factor @ 30 °C	Weight (lbs.)
2.75" x 2.75" window (dim. A and B)					
300	A19R27S03-570	1.2B-0.1	C20	1.5	20
400	A19R27S04-570	0.6B-0.1	C50	1.5	20
500	A19R27S05-570	0.6B-0.1	C50	1.5	20
600	A19R27S06-570	0.6B-0.1	C75	1.5	20
800	A19R27S08-570	0.3B-0.1	C100	1.5	20
5.5" x 5.5" window (dim. A and B)					
300	A19R55S03-570	1.2B-0.1	C20	1.5	27
400	A19R55S04-570	0.6B-0.1	C50	1.5	27
500	A19R55S05-570	0.6B-0.1	C50	1.5	27
600	A19R55S06-570	0.6B-0.1	C75	1.5	27
800	A19R55S08-570	0.6B-0.2	C100	1.5	27
1000	A19R55S10-570	0.3B-0.5	C100	1.5	27
1200	A19R55S12-570	0.3B-0.5	C150	1.5	27
1500	A19R55S15-570	0.3B-0.9	C150	1.5	27
1600	A19R55S16-570	0.3B-0.9	C200	1.5	27
2000	A19R55S20-570	0.3B-1.8	C200	1.5	27

Primary amps	Style number	IEEE metering accuracy	Relay accuracy	Rating factor @ 30 °C	Weight (lbs.)
9.0" x 9.0" window (dim. A and B)					
600	A19R90S06-570	1.2B-0.1	C75	1.5	40
800	A19R90S08-570	0.6B-0.2	C100	1.5	40
1000	A19R90S10-570	0.3B-0.5	C100	1.5	40
1200	A19R90S12-570	0.3B-0.5	C150	1.5	40
1500	A19R90S15-570	0.3B-0.9	C150	1.5	40
1600	A19R90S16-570	0.3B-0.9	C200	1.5	40
2000	A19R90S20-570	0.3B-1.8	C200	1.5	40
3000	A19R90S30-570	0.3B-1.8	C300	1.5	40
4000	A19R90S40-570	0.3B-1.8	C400	1.0	40

One second thermal/mechanical ratings: 80 x full winding I_{nom} / unlimited mechanical. Additional styles available upon request. Contact your ABB sales representative or call +1-252-827-3212 for more information.

ABB Inc.
305 Gregson Drive
Cary, NC 27511

abb.com/mediumvoltage

We reserve the right to make technical changes or modify the contents of this document without prior notice. With regard to purchase orders, the agreed particulars shall prevail. ABB Inc. does not accept any responsibility whatsoever for potential errors or possible lack of information in this document.

We reserve all rights in this document and in the subject matter and illustrations contained therein. Any reproduction, disclosure to third parties or utilization of its contents – in whole or in parts – is forbidden without prior written consent of ABB Inc. Copyright© 2024 ABB
All rights reserved