

# FSM4000-S4

## External transmitter

For electromagnetic  
flowmeters  
FSM4000-SE21,  
FSM4000-SE41F



# Contents

- 1 Name plate specifications for spare parts orders ..... 3
- 2 Overview ..... 3
  - 2.1 Housing ..... 4
  - 2.2 Slide-in converter ..... 4
  - 2.3 Connection board ..... 5

# 1 Name plate specifications for spare parts orders

The transmitter version can be identified by referring to the name plate that is attached to the housing.  
When placing spare parts orders, always remember to state the order number as shown on the name plate.

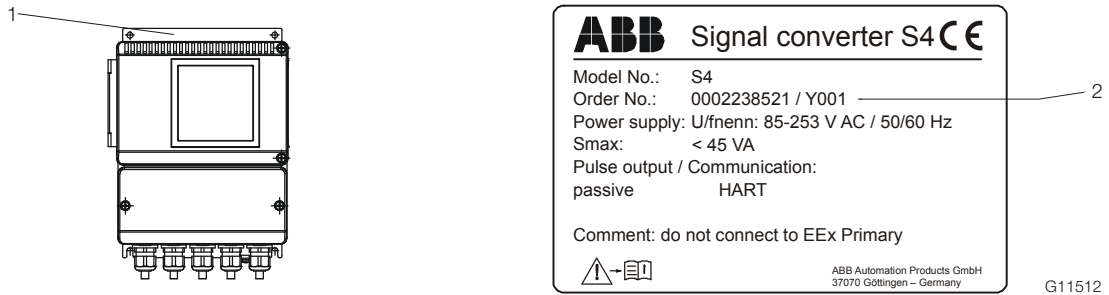


Fig. 1  
1 Name plate, transmitter | 2 Order number

# 2 Overview

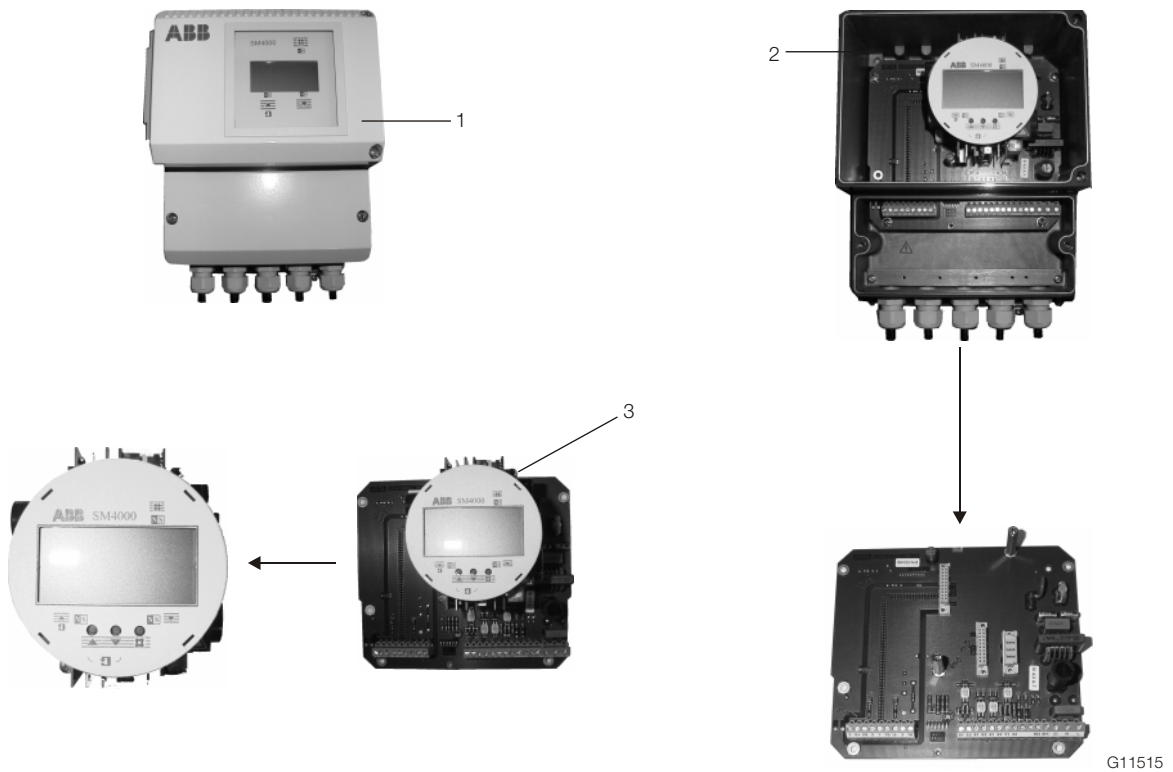


Fig. 2: Overview  
1 Housing complete | 2 Lower connection box | 3 Slide-in converter



## IMPORTANT (NOTE)

All prices on inquiry!

## 2.1 Housing

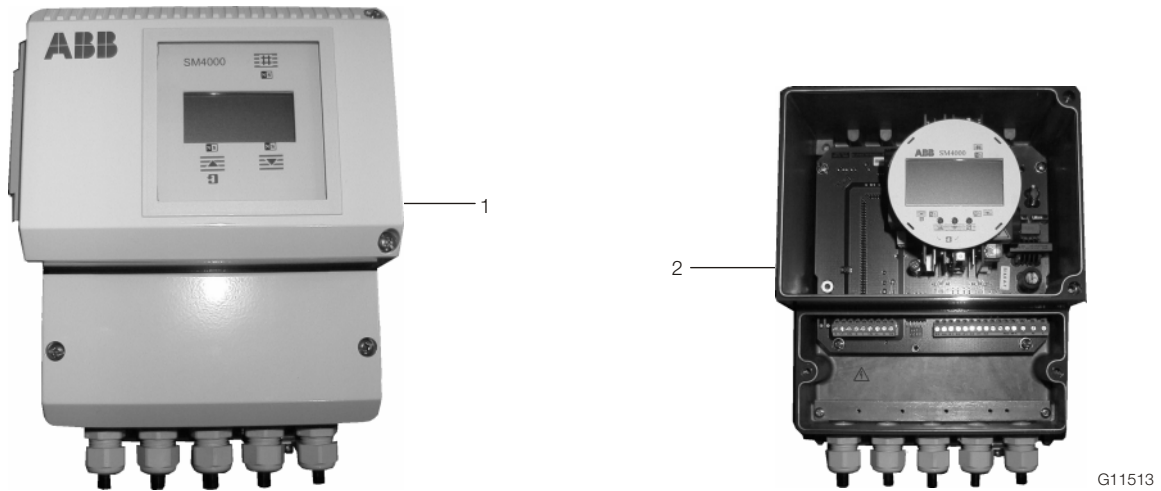


Fig. 3

Position	Name of part	Order number	Weight kg (lb)	Price (€)
1	Field-mount housing complete without converter	D641A033U01	-	
	Field-mount housing complete with slide-in converter 230 V, HART/DX S4_Diagnose	D697A001U07	-	
	Field-mount housing complete with slide-in converter 230 V, PA/FF S4_Diagnose	D697A001U06	-	
	Field-mount housing complete with slide-in converter 230 V Standard/DX S4_Diagnose	D697A001U08	-	
	Field-mount housing complete with slide-in converter 24 V HART/DX S4_Diagnose	D697A002U05	-	
2	Lower connection box installed M20 x 1,5	D641A031U01	-	

## 2.2 Slide-in converter

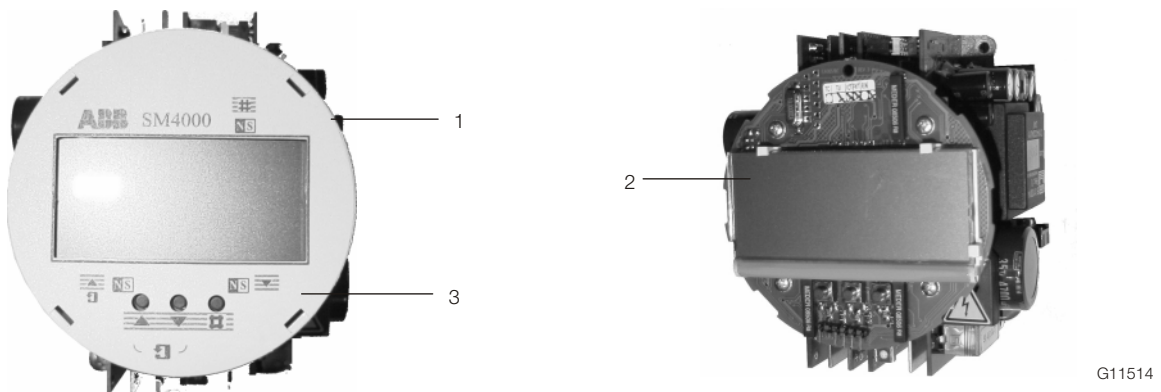
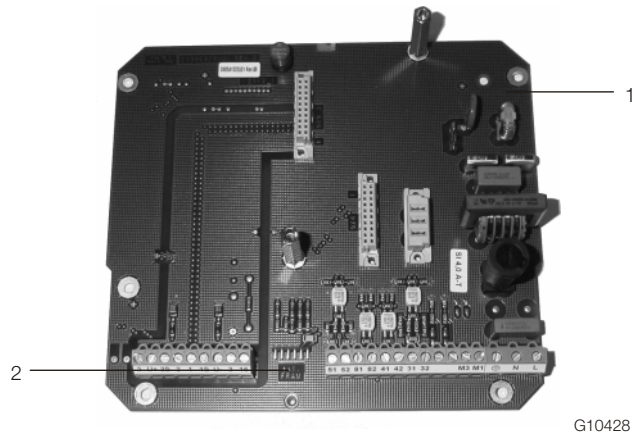


Fig. 4

Position	Name of part	Order number	Weight kg (lb)	Price (€)
1	Slide-in converter 24 V PA / FF	D674A860U04	-	
	Slide-in converter 230 V Standard S4_Diagnose	D674A859U04	-	
	Slide-in converter 230 V HART S4_Diagnose	D674A859U05	-	
	Slide-in converter 230 V PA / FF S4_Diagnose / PA / FF (Please specify version on order)	D674A859U06	-	
2	Display	D685A1015U06	-	
3	Cover for Display	D355H294U01	-	

## 2.3 Connection board



G10428

Fig. 5

Position	Name of part	Variant	Order number	Weight kg (lb)	Price (€)
1	Connection board PA / FF	-	D685A1020U02	-	
	Connection board	Standard	D685A1020U03	-	
2	FRAM unprogrammed	-	D674A873U01	-	
	FRAM programmed 0 % / 100 %	-	D614L842U01	-	
	FRAM programmed (Please enter serial number)	-	D674A873U01A	-	

# Notes

# Notes

# Contact us

To find your local ABB branch, go to:  
[www.abb.com/contacts](http://www.abb.com/contacts)

Additional product information is  
available at:  
[www.abb.com](http://www.abb.com)

## **ABB Automation GmbH**

Service Instrumentation  
Dransfelder Str. 2  
37079 Göttingen  
Germany

### Note

We reserve the right to make technical changes and changes affecting content to this document at any time without prior notice.

Orders are subject to the agreed detailed terms and conditions. ABB cannot be held responsible for any errors or omissions in this document.

We reserve all rights to this document and its content, including images. This document must not be copied, shared with third parties, or its content (in whole or in part) used without the prior written permission of ABB.

Copyright© 2013 ABB  
All rights reserved

3KXF200006R4701

SPL/FSM4000-S4-EN Rev. B 10.2013