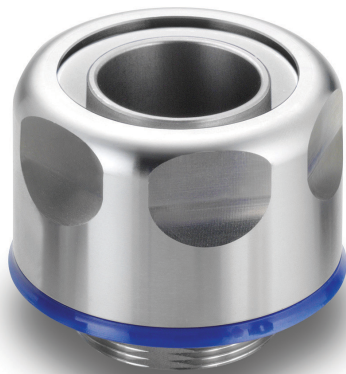


TECHNICAL DATA SHEET

Type SAM

Single piece, stainless steel liquid tight fitting



Single piece, liquid tight, high temperature stainless steel fitting. Suitable for food zone non-contact areas

Certifications / Standards:



Features & Benefits:

- Unique single piece design
- Stainless Steel
- Very high corrosion resistance
- Very high chemical resistance
- Very high fatigue life

Applications:

- Suitable for food zone non-contact areas

Temperature Range:

- Static applications: -50°C to +130°C
- Moving applications: -5°C to +150°C

IP Rating:

Type SAMHL, SSAMHL & SAMHURL conduit

- IP65
- IP68 (10 bar 30 mins)
- IP69

Material / Materials / Finishes:

- Stainless steel

Conforms to:

- CE marked to Low Voltage Directive 2014/35/EU
- BSI Kitemark KM35161 to BS EN 61386
- UL514b file number E60625
- NSF 14159-1-2014
- NSF 169-2009

Fire performance:

- Self extinguishing
- Zero halogen

Part Numbers and Dimensions

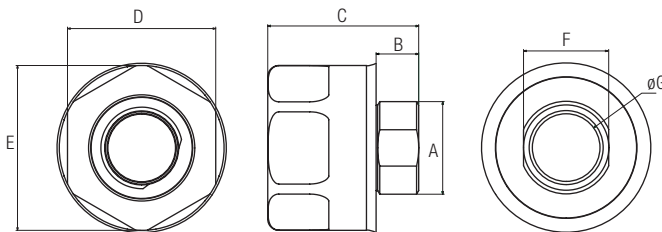
METRIC Part no:	Conduit Size (A)		Nominal Dimensions (mm)						GID code
	Metric (mm)	US (Trade size)	B	C	D	E	F	G	
SPL16/M16/SAM	16	3/8"	12.0	32.8	30.0	31.9	14.0	10.5	7TCA296120R0043
SPL20/M20/SAM	20	1/2"	12.0	35.6	32.0	35.0	18.0	14.5	7TCA296120R0044
SPL25/M25/SAM	25	3/4"	12.0	43.0	38.0	41.0	23.0	18.3	7TCA296120R0045
SPL32/M32/SAM	32	1"	12.0	51.5	45.0	49.0	30.0	24.1	7TCA296120R0046
SPL40/M40/SAM	40	1 1/4"	12.0	53.3	57.0	61.5	38.0	32.7	7TCA296120R0047
SPL50/M50/SAM	50	1 1/2"	12.0	60.2	64.0	69.0	48.0	37.7	7TCA296120R0048
SPL63/M63/SAM*	63	2"	12.0	71.4	80.0	87.0	61.0	49.0	7TCA296120R0049

Part Numbers and Dimensions

NPT Part no:	Conduit Size (A)		Nominal Dimensions (mm)						GID code
	US (Trade size)	Metric (mm)	B	C	D	E	F	G	
SPL16/038/SAM	3/8"	16	15.2	43.0	30.0	31.9	14.0	10.5	7TCA296120R0053
SPL20/050/SAM	1/2"	20	19.8	43.2	32.0	35.0	18.0	14.5	7TCA296120R0054
SPL25/075/SAM	3/4"	25	20.1	46.3	38.0	41.0	23.0	18.3	7TCA296120R0055
SPL32/100/SAM	1"	32	25.0	57.9	45.0	49.0	30.0	24.1	7TCA296120R0056
SPL40/125/SAM	1 1/4"	40	25.6	60.4	57.0	61.5	38.0	32.7	7TCA296120R0057
SPL50/150/SAM	1 1/2"	50	26.0	64.7	64.0	69.0	48.0	37.7	7TCA296120R0058
SPL63/200/SAM*	2"	63	26.9	74.1	80.0	87.0	61.0	49.0	7TCA296120R0059

* : Currently does not conform to UL514b
 Note¹: A flat surface greater than diameter "E" is required around the knockout on the box or enclosure for the face seal of the NPT fitting to create a liquid tight seal. (The NPT threads alone will not provide a liquid tight seal when installed in a female NPT hub)
 Note²: Parts are maintenance free, face seal can be replaced if damaged.

Note³: Parts are fully cleanable and will maintain full ingress protection under normal wet cleaning conditions



Installation Instructions		
Metric	Fitting Size	Torque (N.m)
	NPT	
M16	3/8"	20
M20	1/2"	25
M25	3/4"	30
M32	1"	35
M40	1 1/4"	35
M50	1 1/2"	40
M63	2"	40

Tools required: 1 x hacksaw, 2 x adjustable spanners, appropriate PPE equipment e.g. gloves, glasses
 Note⁴: General guidelines actual installation may vary

