



Catalog

# Emax Link Abbreviated switchgear

Power and productivity  
for a better world™





# Emax Link catalog

## Table of contents

General.....	3-5
Main breaker sections.....	6-7
Tie breaker sections.....	8
Feeder breaker sections.....	9-26
Auxiliary sections.....	27-28
Accessories.....	29-31
Layout.....	32-40



# Low voltage metal enclosed Emax Link Abbreviated Switchgear

## Emax Link Abbreviated Switchgear

The Emax Link Abbreviated Switchgear is low voltage switchgear for the OEM market. It is available in many different ratings and configurations, such as main breaker, tie breaker, feeder breaker and auxiliary sections. These sections can be arranged and assembled to form complete switchgear lineups according to your customer's requirements.

Each abbreviated switchgear section includes all frame members, panels, barriers and bussing necessary for metal-enclosed construction, requiring only the addition of control devices, side covers, bus splices and wiring. With the comprehensive ratings of the Emax Link Abbreviated Switchgear the OEM is able to complete the switchgear lineup by adding all the custom controls and wiring that is required for the application.

## Benefits and features

The Emax Link Abbreviated Metal-Enclosed Low Voltage Switchgear offers the following features that include:

- Modular bolt together frame design
- High amperage bussing
- Optional side covers
- Removable mounting panels in instrument compartments
- Barriers between the bus compartment and the cable compartment for increased personnel protection
- Insulated busbar options

## System overview

The basic design:

- UL 1558 Recognized
- ANSI C37.20.1
- Enclosure types: NEMA 1

## Ratings

Emax Link Abbreviated Switchgear is available with the following ratings:

- 635 Vac max
- 10,000 A max main bus
- 60 Hz
- 2200 Vac RMS Dielectric
- 65 kA and 100 kA Symmetrical short circuit rating
- 85 kA Short time bus withstand rating (for 1 second)

Breaker frame sizes:

- E3 800-2500AF
- E4 3000-3200AF
- E6 4000-5000AF



## Standards

The Emax power breakers provided in the Emax Link Abbreviated Switchgear are designed, tested, and constructed in accordance with the following standards.

- ANSI C37.13 — Low Voltage AC Power Circuit Breakers Used in Enclosures
- ANSI C37.16 — Preferred Ratings, Related Requirements, and Application for Low Voltage Power Circuit Breakers and AC Power Circuit Protectors
- ANSI C37.17 — Trip Devices for AC and General Purpose DC Low-Voltage Power Circuit Breakers
- UL 1066 Listed

# General information

## UL 1558 Abbreviated Switchgear Project

### Catalog number explanation

Catalog number																		
Position	1	2	3	4	5	6	7	8	9	10	11	12	13	14	15	16	17	18
Catalog #	G	A	A	3	2	X	M	E	4	A	A	K	A	A	X	X	7	2
	Product family	System type	Bus type	Main bus rating	Vertical bus rating	Section type	Short circuit rating	System voltage	Position A	Position B	Position C	Position D	Enclosure type	Door options	Connection options	Section depth	Section width	

#### Product family

##### Position 1

G = Abbreviated Switchgear

#### System type

##### Position 2

A = 3 Phase / 3 Wire

B = 3 Phase / 4 Wire (100% Neutral)

X = None

#### Bus type ①

##### Position 3

X = No bus provided

A = Silver plated with no insulation (standard)

B = Silver plated with powder coat epoxy insulation

D = Tin plated with no insulation

E = Tin plated with powder coat epoxy insulation

#### Main bus rating ②

##### Positions 4 & 5

00 = None

20 = 2000A

25 = 2500A

32 = 3200A

40 = 4000A

50 = 5000A

60 = 6000A

80 = 8000A

10 = 10,000A

#### Vertical bus rating ③

##### Position 6

X = No bus provided

A = 2000A

B = 3200A

C = 4000A

#### Section type ④

##### Position 7

A = Auxiliary

M = Main

T = Tie

F = Feeder

#### Short circuit rating ⑤

##### Position 8

C = 65kA

E = 100kA

X = None

#### System voltage

##### Position 9

4 = 480V (508V Max.)

6 = 600V (635V Max.)

X = None

#### Compartment A ⑥

##### Position 10

A = Instrument compartment

E = E3 800A frame

F = E3 1200A frame

G = E3 1600A frame

H = E3 2000A frame

#### Compartment B ⑥

##### Position 11

A = Instrument compartment

E = E3 800A frame

F = E3 1200A frame

G = E3 1600A frame

H = E3 2000A frame

#### Compartment C ⑥

##### Position 12

A = Instrument compartment

E = E3 800A frame

F = E3 1200A frame

G = E3 1600A frame

H = E3 2000A frame

J = E3 2500A frame

K = E4 3200A frame

L = E6 4000A frame

M = E6 5000A frame

#### Compartment D ⑥⑨

##### Position 13

A = Instrument Compartment

E = E3 800A frame

F = E3 1200A frame

G = E3 1600A frame

H = E3 2000A frame

#### Enclosure type

##### Position 14

A = Type 1

#### Door options ⑦

##### Position 15

X = No doors (Hinges and latches only)

R = Hinged on RH

L = Hinged on LH

#### Connection options

##### Position 16

X = None

#### Section depth ⑧

##### Position 17

6 = 60" Depth

7 = 72" Depth

8 = 84" Depth

#### Section width ②③

##### Position 18

2 = 24" Width

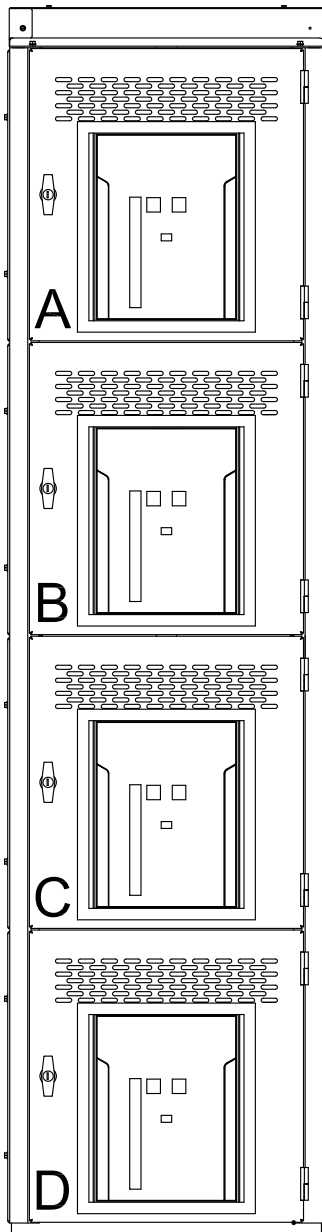
3 = 30" Width

4 = 40" Width

# General information

## UL 1558 Abbreviated Switchgear Project

### Catalog number explanation



#### NOTES

- ① Option A = Silver plated with no insulation is supplied as standard, Option X = No bus provided, can only be ordered in auxiliary sections to provide room for controls and instrumentation, if the auxiliary section is to be placed in the middle of a switchgear lineup it must be ordered with main bus.
- ② Minimum widths for sections based on circuit breaker frame size.
- ③ The vertical bus rating should be less than or equal to the main bus rating and may not exceed the main bus rating, no vertical bus is provided in main, tie or auxiliary sections, select option X = No bus provided. The vertical bus ratings for feeder sections affect the section width, 2000A can fit in 24", 3200A - 4000A requires a 30" section width.
- ④ Auxiliary sections have a single full height instrument compartment, catalog number positions 10-13 must be A. Main breakers sections have instrument compartments above and below the main breaker, catalog positions 10, 11 and 13 must be A. Tie breakers sections have instrument compartments above and below the tie breaker, catalog positions 10, 11 and 13 must be A. Feeder breaker sections may have 1-4 feeder breakers per vertical section, spaces not equipped for a circuit breaker must be designated as instrument compartments.
- ⑤ Switchgear lineup must be rated equal to the lowest rated section in the lineup
- ⑥ Each compartment rating is subject to cumulative loading of the vertical bus
- ⑦ Option X = No Doors (Hinges and latches only) is standard, drawings will be provided for fabrication of both front and rear hinged doors.
- ⑧ All sections in a lineup must have the same depth for alignment purposes, minimum section depth is 60" for 2000-2500A 72" for 3200-6000A, and 84" for 8000-10,000A
- ⑨ Position 12 selections J, K, L, M, and N are only valid for main and tie sections

# Main breaker sections

## 65 kA

Catalog number														Description		List price			
G	A	A	2	0	X	M	C	4	A	A	E	A	A	X	X	6	2	Main Section, 2000A, 3 Phase / 3 Wire, Silver plated with no insulation, 480V (508V Max.), 65kA, E3 800A frame, Type 1, No Doors (Hinges and latches only), 92" H X 24" W X 60" D	\$ 66,437
G	B	A	2	0	X	M	C	4	A	A	E	A	A	X	X	6	2	Main Section, 2000A, 3 Phase / 4 Wire (100% Neutral), Silver plated with no insulation, 480V (508V Max.), 65kA, E3 800A frame, Type 1, No Doors (Hinges and latches only), 92" H X 24" W X 60" D	69,682
G	A	A	2	0	X	M	C	4	A	A	F	A	A	X	X	6	2	Main Section, 2000A, 3 Phase / 3 Wire, Silver plated with no insulation, 480V (508V Max.), 65kA, E3 1200A frame, Type 1, No Doors (Hinges and latches only), 92" H X 24" W X 60" D	73,086
G	B	A	2	0	X	M	C	4	A	A	F	A	A	X	X	6	2	Main Section, 2000A, 3 Phase / 4 Wire (100% Neutral), Silver plated with no insulation, 480V (508V Max.), 65kA, E3 1200A frame, Type 1, No Doors (Hinges and latches only), 92" H X 24" W X 60" D	76,331
G	A	A	2	5	X	M	C	4	A	A	J	A	A	X	X	6	2	Main Section, 2500A, 3 Phase / 3 Wire, Silver plated with no insulation, 480V (508V Max.), 65kA, E3 2500A frame, Type 1, No Doors (Hinges and latches only), 92" H X 24" W X 60" D	97,117
G	B	A	2	5	X	M	C	4	A	A	J	A	A	X	X	6	2	Main Section, 2500A, 3 Phase / 4 Wire (100% Neutral), Silver plated with no insulation, 480V (508V Max.), 65kA, E3 2500A frame, Type 1, No Doors (Hinges and latches only), 92" H X 24" W X 60" D	100,362
G	A	A	3	2	X	M	C	4	A	A	K	A	A	X	X	7	3	Main Section, 3200A, 3 Phase / 3 Wire, Silver plated with no insulation, 480V (508V Max.), 65kA, E4 3200A frame, Type 1, No Doors (Hinges and latches only), 92" H X 30" W X 72" D	117,610
G	B	A	3	2	X	M	C	4	A	A	K	A	A	X	X	7	3	Main Section, 3200A, 3 Phase / 4 Wire (100% Neutral), Silver plated with no insulation, 480V (508V Max.), 65kA, E4 3200A frame, Type 1, No Doors (Hinges and latches only), 92" H X 30" W X 72" D	123,039
G	A	A	4	0	X	M	C	4	A	A	L	A	A	X	X	7	4	Main Section, 4000A, 3 Phase / 3 Wire, Silver plated with no insulation, 480V (508V Max.), 65kA, E6 4000A frame, Type 1, No Doors (Hinges and latches only), 92" H X 40" W X 72" D	151,135
G	B	A	4	0	X	M	C	4	A	A	L	A	A	X	X	7	4	Main Section, 4000A, 3 Phase / 4 Wire (100% Neutral), Silver plated with no insulation, 480V (508V Max.), 65kA, E6 4000A frame, Type 1, No Doors (Hinges and latches only), 92" H X 40" W X 72" D	158,186
G	A	A	5	0	X	M	C	4	A	A	M	A	A	X	X	7	4	Main Section, 5000A, 3 Phase / 3 Wire, Silver plated with no insulation, 480V (508V Max.), 65kA, E6 5000A frame, Type 1, No Doors (Hinges and latches only), 92" H X 40" W X 72" D	205,839
G	A	A	6	0	X	M	C	4	A	A	M	A	A	X	X	7	4	Main Section, 6000A, 3 Phase / 3 Wire, Silver plated with no insulation, 480V (508V Max.), 65kA, E6 5000A frame, Type 1, No Doors (Hinges and latches only), 92" H X 40" W X 72" D	223,163
G	B	A	5	0	X	M	C	4	A	A	M	A	A	X	X	7	4	Main Section, 5000A, 3 Phase / 4 Wire (100% Neutral), Silver plated with no insulation, 480V (508V Max.), 65kA, E6 5000A frame, Type 1, No Doors (Hinges and latches only), 92" H X 40" W X 72" D	215,246
G	B	A	6	0	X	M	C	4	A	A	M	A	A	X	X	7	4	Main Section, 6000A, 3 Phase / 4 Wire (100% Neutral), Silver plated with no insulation, 480V (508V Max.), 65kA, E6 5000A frame, Type 1, No Doors (Hinges and latches only), 92" H X 40" W X 72" D	239,743
G	A	A	8	0	X	M	C	4	A	A	M	A	A	X	X	8	4	Main Section, 8000A, 3 Phase / 3 Wire, Silver plated with no insulation, 480V (508V Max.), 65kA, E6 5000A frame, Type 1, No Doors (Hinges and latches only), 92" H X 40" W X 84" D	252,773
G	A	A	1	0	X	M	C	4	A	A	M	A	A	X	X	8	4	Main Section, 10,000A, 3 Phase / 3 Wire, Silver plated with no insulation, 480V (508V Max.), 65kA, E6 5000A frame, Type 1, No Doors (Hinges and latches only), 92" H X 40" W X 84" D	267,437
G	B	A	8	0	X	M	C	4	A	A	M	A	A	X	X	8	4	Main Section, 8000A, 3 Phase / 4 Wire (100% Neutral), Silver plated with no insulation, 480V (508V Max.), 65kA, E6 5000A frame, Type 1, No Doors (Hinges and latches only), 92" H X 40" W X 84" D	276,124
G	B	A	1	0	X	M	C	4	A	A	M	A	A	X	X	8	4	Main Section, 10,000A, 3 Phase / 4 Wire (100% Neutral), Silver plated with no insulation, 480V (508V Max.), 65kA, E6 5000A frame, Type 1, No Doors (Hinges and latches only), 92" H X 40" W X 84" D	295,314

NOTE: For silver plated bus with powder coat epoxy insulation change position 3 to (B), for tin plated bus change position 3 to (D), for tin plated bus insulated with powder coat epoxy insulation change position 3 to (E).



## 100 kA

Catalog number														Description		List price			
G	A	A	2	0	X	M	E	4	A	A	E	A	A	X	X	6	2	Main Section, 2000A, 3 Phase / 3 Wire, Silver plated with no insulation, 480V (508V Max.), 100kA, E3 800A frame, Type 1, No Doors (Hinges and latches only), 92" H X 24" W X 60" D	\$ 66,437
G	B	A	2	0	X	M	E	4	A	A	E	A	A	X	X	6	2	Main Section, 2000A, 3 Phase / 4 Wire (100% Neutral), Silver plated with no insulation, 480V (508V Max.), 100kA, E3 800A frame, Type 1, No Doors (Hinges and latches only), 92" H X 24" W X 60" D	69,682
G	A	A	2	0	X	M	E	4	A	A	F	A	A	X	X	6	2	Main Section, 2000A, 3 Phase / 3 Wire, Silver plated with no insulation, 480V (508V Max.), 100kA, E3 1200A frame, Type 1, No Doors (Hinges and latches only), 92" H X 24" W X 60" D	73,086
G	B	A	2	0	X	M	E	4	A	A	F	A	A	X	X	6	2	Main Section, 2000A, 3 Phase / 4 Wire (100% Neutral), Silver plated with no insulation, 480V (508V Max.), 100kA, E3 1200A frame, Type 1, No Doors (Hinges and latches only), 92" H X 24" W X 60" D	76,331
G	A	A	2	5	X	M	E	4	A	A	J	A	A	X	X	6	2	Main Section, 2500A, 3 Phase / 3 Wire, Silver plated with no insulation, 480V (508V Max.), 100kA, E3 2500A frame, Type 1, No Doors (Hinges and latches only), 92" H X 24" W X 60" D	97,117
G	B	A	2	5	X	M	E	4	A	A	J	A	A	X	X	6	2	Main Section, 2500A, 3 Phase / 4 Wire (100% Neutral), Silver plated with no insulation, 480V (508V Max.), 100kA, E3 2500A frame, Type 1, No Doors (Hinges and latches only), 92" H X 24" W X 60" D	100,362
G	A	A	3	2	X	M	E	4	A	A	K	A	A	X	X	7	3	Main Section, 3200A, 3 Phase / 3 Wire, Silver plated with no insulation, 480V (508V Max.), 100kA, E4 3200A frame, Type 1, No Doors (Hinges and latches only), 92" H X 30" W X 72" D	118,495
G	B	A	3	2	X	M	E	4	A	A	K	A	A	X	X	7	3	Main Section, 3200A, 3 Phase / 4 Wire (100% Neutral), Silver plated with no insulation, 480V (508V Max.), 100kA, E4 3200A frame, Type 1, No Doors (Hinges and latches only), 92" H X 30" W X 72" D	123,924
G	A	A	4	0	X	M	E	4	A	A	L	A	A	X	X	7	4	Main Section, 4000A, 3 Phase / 3 Wire, Silver plated with no insulation, 480V (508V Max.), 100kA, E6 4000A frame, Type 1, No Doors (Hinges and latches only), 92" H X 40" W X 72" D	152,631
G	B	A	4	0	X	M	E	4	A	A	L	A	A	X	X	7	4	Main Section, 4000A, 3 Phase / 4 Wire (100% Neutral), Silver plated with no insulation, 480V (508V Max.), 100kA, E6 4000A frame, Type 1, No Doors (Hinges and latches only), 92" H X 40" W X 72" D	159,683
G	A	A	5	0	X	M	E	4	A	A	M	A	A	X	X	7	4	Main Section, 5000A, 3 Phase / 3 Wire, Silver plated with no insulation, 480V (508V Max.), 100kA, E6 5000A frame, Type 1, No Doors (Hinges and latches only), 92" H X 40" W X 72" D	207,336
G	A	A	6	0	X	M	E	4	A	A	M	A	A	X	X	7	4	Main Section, 6000A, 3 Phase / 3 Wire, Silver plated with no insulation, 480V (508V Max.), 100kA, E6 5000A frame, Type 1, No Doors (Hinges and latches only), 92" H X 40" W X 72" D	224,660
G	B	A	5	0	X	M	E	4	A	A	M	A	A	X	X	7	4	Main Section, 5000A, 3 Phase / 4 Wire (100% Neutral), Silver plated with no insulation, 480V (508V Max.), 100kA, E6 5000A frame, Type 1, No Doors (Hinges and latches only), 92" H X 40" W X 72" D	216,742
G	B	A	6	0	X	M	E	4	A	A	M	A	A	X	X	7	4	Main Section, 6000A, 3 Phase / 4 Wire (100% Neutral), Silver plated with no insulation, 480V (508V Max.), 100kA, E6 5000A frame, Type 1, No Doors (Hinges and latches only), 92" H X 40" W X 72" D	241,240
G	A	A	8	0	X	M	E	4	A	A	M	A	A	X	X	8	4	Main Section, 8000A, 3 Phase / 3 Wire, Silver plated with no insulation, 480V (508V Max.), 100kA, E6 5000A frame, Type 1, No Doors (Hinges and latches only), 92" H X 40" W X 84" D	254,269
G	A	A	1	0	X	M	E	4	A	A	M	A	A	X	X	8	4	Main Section, 10,000A, 3 Phase / 3 Wire, Silver plated with no insulation, 480V (508V Max.), 100kA, E6 5000A frame, Type 1, No Doors (Hinges and latches only), 92" H X 40" W X 84" D	268,934
G	B	A	8	0	X	M	E	4	A	A	M	A	A	X	X	8	4	Main Section, 8000A, 3 Phase / 4 Wire (100% Neutral), Silver plated with no insulation, 480V (508V Max.), 100kA, E6 5000A frame, Type 1, No Doors (Hinges and latches only), 92" H X 40" W X 84" D	277,620
G	B	A	1	0	X	M	E	4	A	A	M	A	A	X	X	8	4	Main Section, 10,000A, 3 Phase / 4 Wire (100% Neutral), Silver plated with no insulation, 480V (508V Max.), 100kA, E6 5000A frame, Type 1, No Doors (Hinges and latches only), 92" H X 40" W X 84" D	296,811

NOTE: For silver plated bus with powder coat epoxy insulation change position 3 to (B), for tin plated bus change position 3 to (D), for tin plated bus insulated with powder coat epoxy insulation change position 3 to (E).

# Tie breaker sections

## 65 kA

Catalog number														Description	List price				
G	A	A	2	0	X	T	C	4	A	A	H	A	A	X	X	6	2	Tie Section, 2000A, 3 Phase / 3 Wire, Silver plated with no insulation, 480V (508V Max.), 65kA, E3 2000A frame, Type 1, No Doors (Hinges and latches only), 92" H X 24" W X 60" D	\$ 101,609
G	A	A	2	5	X	T	C	4	A	A	J	A	A	X	X	6	2	Tie Section, 2500A, 3 Phase / 3 Wire, Silver plated with no insulation, 480V (508V Max.), 65kA, E3 2500A frame, Type 1, No Doors (Hinges and latches only), 92" H X 24" W X 60" D	103,546
G	B	A	2	0	X	T	C	4	A	A	H	A	A	X	X	6	2	Tie Section, 2000A, 3 Phase / 4 Wire (100% Neutral), Silver plated with no insulation, 480V (508V Max.), 65kA, E3 2000A frame, Type 1, No Doors (Hinges and latches only), 92" H X 24" W X 60" D	106,087
G	B	A	2	5	X	T	C	4	A	A	J	A	A	X	X	6	2	Tie Section, 2500A, 3 Phase / 4 Wire (100% Neutral), Silver plated with no insulation, 480V (508V Max.), 65kA, E3 2500A frame, Type 1, No Doors (Hinges and latches only), 92" H X 24" W X 60" D	108,024
G	A	A	3	2	X	T	C	4	A	A	K	A	A	X	X	7	3	Tie Section, 3200A, 3 Phase / 3 Wire, Silver plated with no insulation, 480V (508V Max.), 65kA, E4 3200A frame, Type 1, No Doors (Hinges and latches only), 92" H X 30" W X 72" D	120,709
G	A	A	4	0	X	T	C	4	A	A	L	A	A	X	X	7	4	Tie Section, 4000A, 3 Phase / 3 Wire, Silver plated with no insulation, 480V (508V Max.), 65kA, E6 4000A frame, Type 1, No Doors (Hinges and latches only), 92" H X 40" W X 72" D	155,246
G	A	A	5	0	X	T	C	4	A	A	M	A	A	X	X	7	4	Tie Section, 5000A, 3 Phase / 3 Wire, Silver plated with no insulation, 480V (508V Max.), 65kA, E6 5000A frame, Type 1, No Doors (Hinges and latches only), 92" H X 40" W X 72" D	211,329
G	B	A	3	2	X	T	C	4	A	A	K	A	A	X	X	7	3	Tie Section, 3200A, 3 Phase / 4 Wire (100% Neutral), Silver plated with no insulation, 480V (508V Max.), 65kA, E4 3200A frame, Type 1, No Doors (Hinges and latches only), 92" H X 30" W X 72" D	127,163
G	B	A	4	0	X	T	C	4	A	A	L	A	A	X	X	7	4	Tie Section, 4000A, 3 Phase / 4 Wire (100% Neutral), Silver plated with no insulation, 480V (508V Max.), 65kA, E6 4000A frame, Type 1, No Doors (Hinges and latches only), 92" H X 40" W X 72" D	163,676
G	B	A	5	0	X	T	C	4	A	A	M	A	A	X	X	7	4	Tie Section, 5000A, 3 Phase / 4 Wire (100% Neutral), Silver plated with no insulation, 480V (508V Max.), 65kA, E6 5000A frame, Type 1, No Doors (Hinges and latches only), 92" H X 40" W X 72" D	222,566

NOTE: For silver plated bus with powder coat epoxy insulation change position 3 to (B), for tin plated bus change position 3 to (D), for tin plated bus insulated with powder coat epoxy insulation change position 3 to (E).

## 100 kA

Catalog number														Description	List price				
G	A	A	2	0	X	T	E	4	A	A	H	A	A	X	X	6	2	Tie Section, 2000A, 3 Phase / 3 Wire, Silver plated with no insulation, 480V (508V Max.), 100kA, E3 2000A frame, Type 1, No Doors (Hinges and latches only), 92" H X 24" W X 60" D	\$ 101,609
G	A	A	2	5	X	T	E	4	A	A	J	A	A	X	X	6	2	Tie Section, 2500A, 3 Phase / 3 Wire, Silver plated with no insulation, 480V (508V Max.), 100kA, E3 2500A frame, Type 1, No Doors (Hinges and latches only), 92" H X 24" W X 60" D	103,546
G	B	A	2	0	X	T	E	4	A	A	H	A	A	X	X	6	2	Tie Section, 2000A, 3 Phase / 4 Wire (100% Neutral), Silver plated with no insulation, 480V (508V Max.), 100kA, E3 2000A frame, Type 1, No Doors (Hinges and latches only), 92" H X 24" W X 60" D	106,087
G	B	A	2	5	X	T	E	4	A	A	J	A	A	X	X	6	2	Tie Section, 2500A, 3 Phase / 4 Wire (100% Neutral), Silver plated with no insulation, 480V (508V Max.), 100kA, E3 2500A frame, Type 1, No Doors (Hinges and latches only), 92" H X 24" W X 60" D	108,024
G	A	A	3	2	X	T	E	4	A	A	K	A	A	X	X	7	3	Tie Section, 3200A, 3 Phase / 3 Wire, Silver plated with no insulation, 480V (508V Max.), 100kA, E4 3200A frame, Type 1, No Doors (Hinges and latches only), 92" H X 30" W X 72" D	121,594
G	A	A	4	0	X	T	E	4	A	A	L	A	A	X	X	7	4	Tie Section, 4000A, 3 Phase / 3 Wire, Silver plated with no insulation, 480V (508V Max.), 100kA, E6 4000A frame, Type 1, No Doors (Hinges and latches only), 92" H X 40" W X 72" D	156,742
G	A	A	5	0	X	T	E	4	A	A	M	A	A	X	X	7	4	Tie Section, 5000A, 3 Phase / 3 Wire, Silver plated with no insulation, 480V (508V Max.), 100kA, E6 5000A frame, Type 1, No Doors (Hinges and latches only), 92" H X 40" W X 72" D	212,826
G	B	A	3	2	X	T	E	4	A	A	K	A	A	X	X	7	3	Tie Section, 3200A, 3 Phase / 4 Wire (100% Neutral), Silver plated with no insulation, 480V (508V Max.), 100kA, E4 3200A frame, Type 1, No Doors (Hinges and latches only), 92" H X 30" W X 72" D	128,048
G	B	A	4	0	X	T	E	4	A	A	L	A	A	X	X	7	4	Tie Section, 4000A, 3 Phase / 4 Wire (100% Neutral), Silver plated with no insulation, 480V (508V Max.), 100kA, E6 4000A frame, Type 1, No Doors (Hinges and latches only), 92" H X 40" W X 72" D	165,173
G	B	A	5	0	X	T	E	4	A	A	M	A	A	X	X	7	4	Tie Section, 5000A, 3 Phase / 4 Wire (100% Neutral), Silver plated with no insulation, 480V (508V Max.), 100kA, E6 5000A frame, Type 1, No Doors (Hinges and latches only), 92" H X 40" W X 72" D	224,062

NOTE: For silver plated bus with powder coat epoxy insulation change position 3 to (B), for tin plated bus change position 3 to (D), for tin plated bus insulated with powder coat epoxy insulation change position 3 to (E).

## 65 kA, 24 wide"

Catalog Number														Description		List Price			
G	A	A	2	0	A	F	C	4	A	A	A	E	A	X	X	6	2	Feeder Section, 2000A, 3 Phase / 3 Wire, Silver plated with no insulation, 480V (508V Max.), 65kA, Instrument Compartment, Instrument Compartment, Instrument Compartment, E3 800A frame, Type 1, No Doors (Hinges and latches only), 92" H X 24" W X 60" D	\$ 83,151
G	A	A	2	5	A	F	C	4	A	A	A	E	A	X	X	6	2	Feeder Section, 2500A, 3 Phase / 3 Wire, Silver plated with no insulation, 480V (508V Max.), 65kA, Instrument Compartment, Instrument Compartment, Instrument Compartment, E3 800A frame, Type 1, No Doors (Hinges and latches only), 92" H X 24" W X 60" D	85,347
G	A	A	2	0	A	F	C	4	A	A	A	F	A	X	X	6	2	Feeder Section, 2000A, 3 Phase / 3 Wire, Silver plated with no insulation, 480V (508V Max.), 65kA, Instrument Compartment, Instrument Compartment, Instrument Compartment, E3 1200A frame, Type 1, No Doors (Hinges and latches only), 92" H X 24" W X 60" D	84,615
G	A	A	2	5	A	F	C	4	A	A	A	F	A	X	X	6	2	Feeder Section, 2500A, 3 Phase / 3 Wire, Silver plated with no insulation, 480V (508V Max.), 65kA, Instrument Compartment, Instrument Compartment, Instrument Compartment, E3 1200A frame, Type 1, No Doors (Hinges and latches only), 92" H X 24" W X 60" D	86,811
G	A	A	2	0	A	F	C	4	A	A	E	A	A	X	X	6	2	Feeder Section, 2000A, 3 Phase / 3 Wire, Silver plated with no insulation, 480V (508V Max.), 65kA, Instrument Compartment, Instrument Compartment, Instrument Compartment, E3 800A frame, Type 1, No Doors (Hinges and latches only), 92" H X 24" W X 60" D	83,151
G	A	A	2	5	A	F	C	4	A	A	E	A	A	X	X	6	2	Feeder Section, 2500A, 3 Phase / 3 Wire, Silver plated with no insulation, 480V (508V Max.), 65kA, Instrument Compartment, Instrument Compartment, Instrument Compartment, E3 800A frame, Type 1, No Doors (Hinges and latches only), 92" H X 24" W X 60" D	85,347
G	A	A	2	0	A	F	C	4	A	A	E	E	A	X	X	6	2	Feeder Section, 2000A, 3 Phase / 3 Wire, Silver plated with no insulation, 480V (508V Max.), 65kA, Instrument Compartment, Instrument Compartment, E3 800A frame, E3 800A frame, Type 1, No Doors (Hinges and latches only), 92" H X 24" W X 60" D	104,362
G	A	A	2	5	A	F	C	4	A	A	E	E	A	X	X	6	2	Feeder Section, 2500A, 3 Phase / 3 Wire, Silver plated with no insulation, 480V (508V Max.), 65kA, Instrument Compartment, Instrument Compartment, E3 800A frame, E3 800A frame, Type 1, No Doors (Hinges and latches only), 92" H X 24" W X 60" D	106,558
G	A	A	2	0	A	F	C	4	A	A	E	F	A	X	X	6	2	Feeder Section, 2000A, 3 Phase / 3 Wire, Silver plated with no insulation, 480V (508V Max.), 65kA, Instrument Compartment, Instrument Compartment, E3 800A frame, E3 1200A frame, Type 1, No Doors (Hinges and latches only), 92" H X 24" W X 60" D	105,826
G	A	A	2	5	A	F	C	4	A	A	E	F	A	X	X	6	2	Feeder Section, 2500A, 3 Phase / 3 Wire, Silver plated with no insulation, 480V (508V Max.), 65kA, Instrument Compartment, Instrument Compartment, E3 800A frame, E3 1200A frame, Type 1, No Doors (Hinges and latches only), 92" H X 24" W X 60" D	108,022
G	A	A	2	0	A	F	C	4	A	A	F	A	A	X	X	6	2	Feeder Section, 2000A, 3 Phase / 3 Wire, Silver plated with no insulation, 480V (508V Max.), 65kA, Instrument Compartment, Instrument Compartment, E3 1200A frame, Instrument Compartment, Type 1, No Doors (Hinges and latches only), 92" H X 24" W X 60" D	84,615
G	A	A	2	5	A	F	C	4	A	A	F	A	A	X	X	6	2	Feeder Section, 2500A, 3 Phase / 3 Wire, Silver plated with no insulation, 480V (508V Max.), 65kA, Instrument Compartment, Instrument Compartment, E3 1200A frame, Instrument Compartment, Type 1, No Doors (Hinges and latches only), 92" H X 24" W X 60" D	86,811
G	A	A	2	0	A	F	C	4	A	A	F	E	A	X	X	6	2	Feeder Section, 2000A, 3 Phase / 3 Wire, Silver plated with no insulation, 480V (508V Max.), 65kA, Instrument Compartment, Instrument Compartment, E3 1200A frame, E3 800A frame, Type 1, No Doors (Hinges and latches only), 92" H X 24" W X 60" D	105,826
G	A	A	2	5	A	F	C	4	A	A	F	E	A	X	X	6	2	Feeder Section, 2500A, 3 Phase / 3 Wire, Silver plated with no insulation, 480V (508V Max.), 65kA, Instrument Compartment, Instrument Compartment, E3 1200A frame, E3 800A frame, Type 1, No Doors (Hinges and latches only), 92" H X 24" W X 60" D	108,022
G	B	A	2	0	A	F	C	4	A	A	A	E	A	X	X	6	2	Feeder Section, 2000A, 3 Phase / 4 Wire, (100% Neutral) Silver plated with no insulation, 480V (508V Max.), 65kA, Instrument Compartment, Instrument Compartment, Instrument Compartment, E3 800A frame, Type 1, No Doors (Hinges and latches only), 92" H X 24" W X 60" D	85,664
G	B	A	2	5	A	F	C	4	A	A	A	E	A	X	X	6	2	Feeder Section, 2500A, 3 Phase / 4 Wire, (100% Neutral) Silver plated with no insulation, 480V (508V Max.), 65kA, Instrument Compartment, Instrument Compartment, Instrument Compartment, E3 800A frame, Type 1, No Doors (Hinges and latches only), 92" H X 24" W X 60" D	88,592
G	B	A	2	0	A	F	C	4	A	A	A	F	A	X	X	6	2	Feeder Section, 2000A, 3 Phase / 4 Wire, (100% Neutral) Silver plated with no insulation, 480V (508V Max.), 65kA, Instrument Compartment, Instrument Compartment, Instrument Compartment, E3 1200A frame, Type 1, No Doors (Hinges and latches only), 92" H X 24" W X 60" D	87,128
G	B	A	2	5	A	F	C	4	A	A	A	F	A	X	X	6	2	Feeder Section, 2500A, 3 Phase / 4 Wire, (100% Neutral) Silver plated with no insulation, 480V (508V Max.), 65kA, Instrument Compartment, Instrument Compartment, Instrument Compartment, E3 1200A frame, Type 1, No Doors (Hinges and latches only), 92" H X 24" W X 60" D	90,056
G	B	A	2	0	A	F	C	4	A	A	E	A	A	X	X	6	2	Feeder Section, 2000A, 3 Phase / 4 Wire, (100% Neutral) Silver plated with no insulation, 480V (508V Max.), 65kA, Instrument Compartment, Instrument Compartment, Instrument Compartment, E3 800A frame, Instrument Compartment, Type 1, No Doors (Hinges and latches only), 92" H X 24" W X 60" D	85,664
G	B	A	2	5	A	F	C	4	A	A	E	A	A	X	X	6	2	Feeder Section, 2500A, 3 Phase / 4 Wire, (100% Neutral) Silver plated with no insulation, 480V (508V Max.), 65kA, Instrument Compartment, Instrument Compartment, Instrument Compartment, E3 800A frame, Instrument Compartment, Type 1, No Doors (Hinges and latches only), 92" H X 24" W X 60" D	88,592
G	B	A	2	0	A	F	C	4	A	A	E	E	A	X	X	6	2	Feeder Section, 2000A, 3 Phase / 4 Wire, (100% Neutral) Silver plated with no insulation, 480V (508V Max.), 65kA, Instrument Compartment, Instrument Compartment, Instrument Compartment, E3 800A frame, E3 800A frame, Type 1, No Doors (Hinges and latches only), 92" H X 24" W X 60" D	106,875

# Feeder breaker sections

## 65 kA, 24" wide

Catalog Number														Description		List Price			
G	B	A	2	5	A	F	C	4	A	A	E	E	A	X	X	6	2	Feeder Section, 2500A, 3 Phase / 4 Wire, (100% Neutral) Silver plated with no insulation, 480V (508V Max.), 65kA, Instrument Compartment, Instrument Compartment, E3 800A frame, E3 800A frame, Type 1, No Doors (Hinges and latches only), 92" H X 24" W X 60" D	\$ 109,803
G	B	A	2	0	A	F	C	4	A	A	E	F	A	X	X	6	2	Feeder Section, 2000A, 3 Phase / 4 Wire, (100% Neutral) Silver plated with no insulation, 480V (508V Max.), 65kA, Instrument Compartment, Instrument Compartment, E3 800A frame, E3 1200A frame, Type 1, No Doors (Hinges and latches only), 92" H X 24" W X 60" D	108,339
G	B	A	2	5	A	F	C	4	A	A	E	F	A	X	X	6	2	Feeder Section, 2500A, 3 Phase / 4 Wire, (100% Neutral) Silver plated with no insulation, 480V (508V Max.), 65kA, Instrument Compartment, Instrument Compartment, E3 800A frame, E3 1200A frame, Type 1, No Doors (Hinges and latches only), 92" H X 24" W X 60" D	111,267
G	B	A	2	0	A	F	C	4	A	A	F	A	A	X	X	6	2	Feeder Section, 2000A, 3 Phase / 4 Wire, (100% Neutral) Silver plated with no insulation, 480V (508V Max.), 65kA, Instrument Compartment, Instrument Compartment, E3 1200A frame, Instrument Compartment, Type 1, No Doors (Hinges and latches only), 92" H X 24" W X 60" D	87,128
G	B	A	2	5	A	F	C	4	A	A	F	A	A	X	X	6	2	Feeder Section, 2500A, 3 Phase / 4 Wire, (100% Neutral) Silver plated with no insulation, 480V (508V Max.), 65kA, Instrument Compartment, Instrument Compartment, E3 1200A frame, Instrument Compartment, Type 1, No Doors (Hinges and latches only), 92" H X 24" W X 60" D	90,056
G	B	A	2	0	A	F	C	4	A	A	F	E	A	X	X	6	2	Feeder Section, 2000A, 3 Phase / 4 Wire, (100% Neutral) Silver plated with no insulation, 480V (508V Max.), 65kA, Instrument Compartment, Instrument Compartment, E3 1200A frame, E3 800A frame, Type 1, No Doors (Hinges and latches only), 92" H X 24" W X 60" D	108,339
G	B	A	2	5	A	F	C	4	A	A	F	E	A	X	X	6	2	Feeder Section, 2500A, 3 Phase / 4 Wire, (100% Neutral) Silver plated with no insulation, 480V (508V Max.), 65kA, Instrument Compartment, Instrument Compartment, E3 1200A frame, E3 800A frame, Type 1, No Doors (Hinges and latches only), 92" H X 24" W X 60" D	111,267

### NOTES

1. For silver plated bus with powder coat epoxy insulation change position 3 to (B), for tin plated bus change position 3 to (D), for tin plated bus insulated with powder coat epoxy insulation change position 3 to (E).
2. For 3P4W, change position 2 to (B). Neutral current sensors are not included.
3. The preferred location for feeder breakers is with the largest rated breaker at the bottom of the section, when multiple adjoining instrument compartments are ordered they will be configured as a single larger instrument compartment rather than multiple smaller compartments.
4. For feeder breakers rated greater than 800 amps replace positions 10, 11, 12 or 13 with (F) for 1200 amps, (G) for 1600 amps, or (H) for 2000 amps, the vertical bus is subject to cumulative loading.

## 100 kA, 24" wide

Catalog Number																Description	List Price		
G	A	A	2	0	A	F	E	4	A	A	A	E	A	X	X	6	2	Feeder Section, 2000A, 3 Phase / 3 Wire, Silver plated with no insulation, 480V (508V Max.), 100kA, Instrument Compartment, Instrument Compartment, Instrument Compartment, E3 800A frame, Type 1, No Doors (Hinges and latches only), 92" H X 24" W X 60" D	\$ 83,151
G	A	A	2	5	A	F	E	4	A	A	A	E	A	X	X	6	2	Feeder Section, 2500A, 3 Phase / 3 Wire, Silver plated with no insulation, 480V (508V Max.), 100kA, Instrument Compartment, Instrument Compartment, Instrument Compartment, E3 800A frame, Type 1, No Doors (Hinges and latches only), 92" H X 24" W X 60" D	85,347
G	A	A	2	0	A	F	E	4	A	A	A	F	A	X	X	6	2	Feeder Section, 2000A, 3 Phase / 3 Wire, Silver plated with no insulation, 480V (508V Max.), 100kA, Instrument Compartment, Instrument Compartment, Instrument Compartment, E3 1200A frame, Type 1, No Doors (Hinges and latches only), 92" H X 24" W X 60" D	84,615
G	A	A	2	5	A	F	E	4	A	A	A	F	A	X	X	6	2	Feeder Section, 2500A, 3 Phase / 3 Wire, Silver plated with no insulation, 480V (508V Max.), 100kA, Instrument Compartment, Instrument Compartment, Instrument Compartment, E3 1200A frame, Type 1, No Doors (Hinges and latches only), 92" H X 24" W X 60" D	86,811
G	A	A	2	0	A	F	E	4	A	A	E	A	A	X	X	6	2	Feeder Section, 2000A, 3 Phase / 3 Wire, Silver plated with no insulation, 480V (508V Max.), 100kA, Instrument Compartment, Instrument Compartment, E3 800A frame, Instrument Compartment, Type 1, No Doors (Hinges and latches only), 92" H X 24" W X 60" D	83,151
G	A	A	2	5	A	F	E	4	A	A	E	A	A	X	X	6	2	Feeder Section, 2500A, 3 Phase / 3 Wire, Silver plated with no insulation, 480V (508V Max.), 100kA, Instrument Compartment, Instrument Compartment, E3 800A frame, Instrument Compartment, Type 1, No Doors (Hinges and latches only), 92" H X 24" W X 60" D	85,347
G	A	A	2	0	A	F	E	4	A	A	E	E	A	X	X	6	2	Feeder Section, 2000A, 3 Phase / 3 Wire, Silver plated with no insulation, 480V (508V Max.), 100kA, Instrument Compartment, Instrument Compartment, E3 800A frame, E3 800A frame, Type 1, No Doors (Hinges and latches only), 92" H X 24" W X 60" D	104,362
G	A	A	2	5	A	F	E	4	A	A	E	E	A	X	X	6	2	Feeder Section, 2500A, 3 Phase / 3 Wire, Silver plated with no insulation, 480V (508V Max.), 100kA, Instrument Compartment, Instrument Compartment, E3 800A frame, E3 800A frame, Type 1, No Doors (Hinges and latches only), 92" H X 24" W X 60" D	106,558
G	A	A	2	0	A	F	E	4	A	A	E	F	A	X	X	6	2	Feeder Section, 2000A, 3 Phase / 3 Wire, Silver plated with no insulation, 480V (508V Max.), 100kA, Instrument Compartment, Instrument Compartment, E3 800A frame, E3 1200A frame, Type 1, No Doors (Hinges and latches only), 92" H X 24" W X 60" D	105,826
G	A	A	2	5	A	F	E	4	A	A	E	F	A	X	X	6	2	Feeder Section, 2500A, 3 Phase / 3 Wire, Silver plated with no insulation, 480V (508V Max.), 100kA, Instrument Compartment, Instrument Compartment, E3 800A frame, E3 1200A frame, Type 1, No Doors (Hinges and latches only), 92" H X 24" W X 60" D	108,022
G	A	A	2	0	A	F	E	4	A	A	F	A	A	X	X	6	2	Feeder Section, 2000A, 3 Phase / 3 Wire, Silver plated with no insulation, 480V (508V Max.), 100kA, Instrument Compartment, Instrument Compartment, E3 1200A frame, Instrument Compartment, Type 1, No Doors (Hinges and latches only), 92" H X 24" W X 60" D	84,615
G	A	A	2	5	A	F	E	4	A	A	F	A	A	X	X	6	2	Feeder Section, 2500A, 3 Phase / 3 Wire, Silver plated with no insulation, 480V (508V Max.), 100kA, Instrument Compartment, Instrument Compartment, E3 1200A frame, Instrument Compartment, Type 1, No Doors (Hinges and latches only), 92" H X 24" W X 60" D	86,811
G	A	A	2	0	A	F	E	4	A	A	F	E	A	X	X	6	2	Feeder Section, 2000A, 3 Phase / 3 Wire, Silver plated with no insulation, 480V (508V Max.), 100kA, Instrument Compartment, Instrument Compartment, E3 1200A frame, E3 800A frame, Type 1, No Doors (Hinges and latches only), 92" H X 24" W X 60" D	105,826
G	A	A	2	5	A	F	E	4	A	A	F	E	A	X	X	6	2	Feeder Section, 2500A, 3 Phase / 3 Wire, Silver plated with no insulation, 480V (508V Max.), 100kA, Instrument Compartment, Instrument Compartment, E3 1200A frame, E3 800A frame, Type 1, No Doors (Hinges and latches only), 92" H X 24" W X 60" D	108,022
G	B	A	2	0	A	F	E	4	A	A	A	E	A	X	X	6	2	Feeder Section, 2000A, 3 Phase / 4 Wire (100% Neutral), Silver plated with no insulation, 480V (508V Max.), 100kA, Instrument Compartment, Instrument Compartment, Instrument Compartment, E3 800A frame, Type 1, No Doors (Hinges and latches only), 92" H X 24" W X 60" D	85,664
G	B	A	2	5	A	F	E	4	A	A	A	E	A	X	X	6	2	Feeder Section, 2500A, 3 Phase / 4 Wire (100% Neutral), Silver plated with no insulation, 480V (508V Max.), 100kA, Instrument Compartment, Instrument Compartment, Instrument Compartment, E3 800A frame, Type 1, No Doors (Hinges and latches only), 92" H X 24" W X 60" D	88,592
G	B	A	2	0	A	F	E	4	A	A	A	F	A	X	X	6	2	Feeder Section, 2000A, 3 Phase / 4 Wire (100% Neutral), Silver plated with no insulation, 480V (508V Max.), 100kA, Instrument Compartment, Instrument Compartment, Instrument Compartment, E3 1200A frame, Type 1, No Doors (Hinges and latches only), 92" H X 24" W X 60" D	87,128
G	B	A	2	5	A	F	E	4	A	A	A	F	A	X	X	6	2	Feeder Section, 2500A, 3 Phase / 4 Wire (100% Neutral), Silver plated with no insulation, 480V (508V Max.), 100kA, Instrument Compartment, Instrument Compartment, Instrument Compartment, E3 1200A frame, Type 1, No Doors (Hinges and latches only), 92" H X 24" W X 60" D	90,056
G	B	A	2	0	A	F	E	4	A	A	E	A	A	X	X	6	2	Feeder Section, 2000A, 3 Phase / 4 Wire (100% Neutral), Silver plated with no insulation, 480V (508V Max.), 100kA, Instrument Compartment, Instrument Compartment, Instrument Compartment, E3 800A frame, Instrument Compartment, Type 1, No Doors (Hinges and latches only), 92" H X 24" W X 60" D	85,664
G	B	A	2	5	A	F	E	4	A	A	E	A	A	X	X	6	2	Feeder Section, 2500A, 3 Phase / 4 Wire (100% Neutral), Silver plated with no insulation, 480V (508V Max.), 100kA, Instrument Compartment, Instrument Compartment, Instrument Compartment, E3 800A frame, Instrument Compartment, Type 1, No Doors (Hinges and latches only), 92" H X 24" W X 60" D	88,592

# Feeder breaker sections

## 100 kA, 24" wide

Catalog Number																Description	List Price		
G	B	A	2	0	A	F	E	4	A	A	E	E	A	X	X	6	2	Feeder Section, 2000A, 3 Phase / 4 Wire (100% Neutral), Silver plated with no insulation, 480V (508V Max.), 100kA, Instrument Compartment, Instrument Compartment, E3 800A frame, E3 800A frame, Type 1, No Doors (Hinges and latches only), 92" H X 24" W X 60" D	\$ 106,875
G	B	A	2	5	A	F	E	4	A	A	E	E	A	X	X	6	2	Feeder Section, 2500A, 3 Phase / 4 Wire (100% Neutral), Silver plated with no insulation, 480V (508V Max.), 100kA, Instrument Compartment, Instrument Compartment, E3 800A frame, E3 800A frame, Type 1, No Doors (Hinges and latches only), 92" H X 24" W X 60" D	109,803
G	B	A	2	0	A	F	E	4	A	A	E	F	A	X	X	6	2	Feeder Section, 2000A, 3 Phase / 4 Wire (100% Neutral), Silver plated with no insulation, 480V (508V Max.), 100kA, Instrument Compartment, Instrument Compartment, E3 800A frame, E3 1200A frame, Type 1, No Doors (Hinges and latches only), 92" H X 24" W X 60" D	108,339
G	B	A	2	5	A	F	E	4	A	A	E	F	A	X	X	6	2	Feeder Section, 2500A, 3 Phase / 4 Wire (100% Neutral), Silver plated with no insulation, 480V (508V Max.), 100kA, Instrument Compartment, Instrument Compartment, E3 800A frame, E3 1200A frame, Type 1, No Doors (Hinges and latches only), 92" H X 24" W X 60" D	111,267
G	B	A	2	0	A	F	E	4	A	A	F	A	A	X	X	6	2	Feeder Section, 2000A, 3 Phase / 4 Wire (100% Neutral), Silver plated with no insulation, 480V (508V Max.), 100kA, Instrument Compartment, Instrument Compartment, E3 1200A frame, Instrument Compartment, Type 1, No Doors (Hinges and latches only), 92" H X 24" W X 60" D	87,128
G	B	A	2	5	A	F	E	4	A	A	F	A	A	X	X	6	2	Feeder Section, 2500A, 3 Phase / 4 Wire (100% Neutral), Silver plated with no insulation, 480V (508V Max.), 100kA, Instrument Compartment, Instrument Compartment, E3 1200A frame, Instrument Compartment, Type 1, No Doors (Hinges and latches only), 92" H X 24" W X 60" D	90,056
G	B	A	2	0	A	F	E	4	A	A	F	E	A	X	X	6	2	Feeder Section, 2000A, 3 Phase / 4 Wire (100% Neutral), Silver plated with no insulation, 480V (508V Max.), 100kA, Instrument Compartment, Instrument Compartment, E3 1200A frame, E3 800A frame, Type 1, No Doors (Hinges and latches only), 92" H X 24" W X 60" D	108,339
G	B	A	2	5	A	F	E	4	A	A	F	E	A	X	X	6	2	Feeder Section, 2500A, 3 Phase / 4 Wire (100% Neutral), Silver plated with no insulation, 480V (508V Max.), 100kA, Instrument Compartment, Instrument Compartment, E3 1200A frame, E3 800A frame, Type 1, No Doors (Hinges and latches only), 92" H X 24" W X 60" D	111,267

### NOTES

1. For silver plated bus with powder coat epoxy insulation change position 3 to (B), for tin plated bus change position 3 to (D), for tin plated bus insulated with powder coat epoxy insulation change position 3 to (E).
2. For 3P4W, change position 2 to (B). Neutral current sensors are not included.
3. The preferred location for feeder breakers is with the largest rated breaker at the bottom of the section, when multiple adjoining instrument compartments are ordered they will be configured as a single larger instrument compartment rather than multiple smaller compartments.
4. For feeder breakers rated greater than 800 amps replace positions 10, 11, 12 or 13 with (F) for 1200 amps, (G) for 1600 amps, or (H) for 2000 amps, the vertical bus is subject to cumulative loading.











# Feeder breaker sections

## 65 kA, 30" wide

Catalog Number														Description	List Price				
G	B	A	8	0	B	F	E	4	E	E	E	E	A	X	X	8	3	Feeder Section, 8000A, 3 Phase / 4 Wire, (100% Neutral)Silver plated with no insulation, 480V (508V Max.), 100kA, E3 800A frame, E3 800A frame, E3 800A frame, E3 800A frame, Type 1, No Doors (Hinges and latches only), 92" H X 30" W X 84" D	\$ 236,649
G	B	A	1	0	B	F	E	4	E	E	E	E	A	X	X	8	3	Feeder Section, 10,000A, 3 Phase / 4 Wire, (100% Neutral)Silver plated with no insulation, 480V (508V Max.), 100kA, E3 800A frame, E3 800A frame, E3 800A frame, E3 800A frame, Type 1, No Doors (Hinges and latches only), 92" H X 30" W X 84" D	252,180
G	B	A	4	0	C	F	E	4	E	E	E	E	A	X	X	7	3	Feeder Section, 4000A, 3 Phase / 4 Wire, (100% Neutral)Silver plated with no insulation, 480V (508V Max.), 100kA, E3 800A frame, E3 800A frame, E3 800A frame, E3 800A frame, Type 1, No Doors (Hinges and latches only), 92" H X 30" W X 72" D	188,044
G	B	A	5	0	C	F	E	4	E	E	E	E	A	X	X	7	3	Feeder Section, 5000A, 3 Phase / 4 Wire, (100% Neutral)Silver plated with no insulation, 480V (508V Max.), 100kA, E3 800A frame, E3 800A frame, E3 800A frame, E3 800A frame, Type 1, No Doors (Hinges and latches only), 92" H X 30" W X 72" D	195,633
G	B	A	6	0	C	F	E	4	E	E	E	E	A	X	X	7	3	Feeder Section, 6000A, 3 Phase / 4 Wire, (100% Neutral)Silver plated with no insulation, 480V (508V Max.), 100kA, E3 800A frame, E3 800A frame, E3 800A frame, E3 800A frame, Type 1, No Doors (Hinges and latches only), 92" H X 30" W X 72" D	213,994
G	B	A	8	0	C	F	E	4	E	E	E	E	A	X	X	8	3	Feeder Section, 8000A, 3 Phase / 4 Wire, (100% Neutral)Silver plated with no insulation, 480V (508V Max.), 100kA, E3 800A frame, E3 800A frame, E3 800A frame, E3 800A frame, Type 1, No Doors (Hinges and latches only), 92" H X 30" W X 84" D	249,081
G	B	A	1	0	C	F	E	4	E	E	E	E	A	X	X	8	3	Feeder Section, 10,000A, 3 Phase / 4 Wire, (100% Neutral)Silver plated with no insulation, 480V (508V Max.), 100kA, E3 800A frame, E3 800A frame, E3 800A frame, E3 800A frame, Type 1, No Doors (Hinges and latches only), 92" H X 30" W X 84" D	270,102
G	B	A	4	0	C	F	E	4	E	E	E	F	A	X	X	7	3	Feeder Section, 4000A, 3 Phase / 4 Wire, (100% Neutral)Silver plated with no insulation, 480V (508V Max.), 100kA, E3 800A frame, E3 800A frame, E3 800A frame, E3 1200A frame, Type 1, No Doors (Hinges and latches only), 92" H X 30" W X 72" D	189,508
G	B	A	5	0	C	F	E	4	E	E	E	F	A	X	X	7	3	Feeder Section, 5000A, 3 Phase / 4 Wire, (100% Neutral)Silver plated with no insulation, 480V (508V Max.), 100kA, E3 800A frame, E3 800A frame, E3 800A frame, E3 1200A frame, Type 1, No Doors (Hinges and latches only), 92" H X 30" W X 72" D	197,097
G	B	A	6	0	C	F	E	4	E	E	E	F	A	X	X	7	3	Feeder Section, 6000A, 3 Phase / 4 Wire, (100% Neutral)Silver plated with no insulation, 480V (508V Max.), 100kA, E3 800A frame, E3 800A frame, E3 800A frame, E3 1200A frame, Type 1, No Doors (Hinges and latches only), 92" H X 30" W X 72" D	215,458
G	B	A	8	0	C	F	E	4	E	E	E	F	A	X	X	8	3	Feeder Section, 8000A, 3 Phase / 4 Wire, (100% Neutral)Silver plated with no insulation, 480V (508V Max.), 100kA, E3 800A frame, E3 800A frame, E3 800A frame, E3 1200A frame, Type 1, No Doors (Hinges and latches only), 92" H X 30" W X 84" D	250,545
G	B	A	1	0	C	F	E	4	E	E	E	F	A	X	X	8	3	Feeder Section, 10,000A, 3 Phase / 4 Wire, (100% Neutral)Silver plated with no insulation, 480V (508V Max.), 100kA, E3 800A frame, E3 800A frame, E3 800A frame, E3 1200A frame, Type 1, No Doors (Hinges and latches only), 92" H X 30" W X 84" D	271,566
G	B	A	4	0	C	F	E	4	E	E	E	G	A	X	X	7	3	Feeder Section, 4000A, 3 Phase / 4 Wire, (100% Neutral)Silver plated with no insulation, 480V (508V Max.), 100kA, E3 800A frame, E3 800A frame, E3 800A frame, E3 1600A frame, Type 1, No Doors (Hinges and latches only), 92" H X 30" W X 72" D	193,461
G	B	A	5	0	C	F	E	4	E	E	E	G	A	X	X	7	3	Feeder Section, 5000A, 3 Phase / 4 Wire, (100% Neutral)Silver plated with no insulation, 480V (508V Max.), 100kA, E3 800A frame, E3 800A frame, E3 800A frame, E3 1600A frame, Type 1, No Doors (Hinges and latches only), 92" H X 30" W X 72" D	201,050
G	B	A	6	0	C	F	E	4	E	E	E	G	A	X	X	7	3	Feeder Section, 6000A, 3 Phase / 4 Wire, (100% Neutral)Silver plated with no insulation, 480V (508V Max.), 100kA, E3 800A frame, E3 800A frame, E3 800A frame, E3 1600A frame, Type 1, No Doors (Hinges and latches only), 92" H X 30" W X 72" D	219,411
G	B	A	8	0	C	F	E	4	E	E	E	G	A	X	X	8	3	Feeder Section, 8000A, 3 Phase / 4 Wire, (100% Neutral)Silver plated with no insulation, 480V (508V Max.), 100kA, E3 800A frame, E3 800A frame, E3 800A frame, E3 1600A frame, Type 1, No Doors (Hinges and latches only), 92" H X 30" W X 84" D	254,498
G	B	A	1	0	C	F	E	4	E	E	E	G	A	X	X	8	3	Feeder Section, 10,000A, 3 Phase / 4 Wire, (100% Neutral)Silver plated with no insulation, 480V (508V Max.), 100kA, E3 800A frame, E3 800A frame, E3 800A frame, E3 1600A frame, Type 1, No Doors (Hinges and latches only), 92" H X 30" W X 84" D	275,518
G	B	A	4	0	C	F	E	4	E	E	F	E	A	X	X	7	3	Feeder Section, 4000A, 3 Phase / 4 Wire, (100% Neutral)Silver plated with no insulation, 480V (508V Max.), 100kA, E3 800A frame, E3 800A frame, E3 1200A frame, E3 800A frame, Type 1, No Doors (Hinges and latches only), 92" H X 30" W X 72" D	189,508
G	B	A	5	0	C	F	E	4	E	E	F	E	A	X	X	7	3	Feeder Section, 5000A, 3 Phase / 4 Wire, (100% Neutral)Silver plated with no insulation, 480V (508V Max.), 100kA, E3 800A frame, E3 800A frame, E3 1200A frame, E3 800A frame, Type 1, No Doors (Hinges and latches only), 92" H X 30" W X 72" D	197,097
G	B	A	6	0	C	F	E	4	E	E	F	E	A	X	X	7	3	Feeder Section, 6000A, 3 Phase / 4 Wire, (100% Neutral)Silver plated with no insulation, 480V (508V Max.), 100kA, E3 800A frame, E3 800A frame, E3 1200A frame, E3 800A frame, Type 1, No Doors (Hinges and latches only), 92" H X 30" W X 72" D	215,458
G	B	A	8	0	C	F	E	4	E	E	F	E	A	X	X	8	3	Feeder Section, 8000A, 3 Phase / 4 Wire, (100% Neutral)Silver plated with no insulation, 480V (508V Max.), 100kA, E3 800A frame, E3 800A frame, E3 1200A frame, E3 800A frame, Type 1, No Doors (Hinges and latches only), 92" H X 30" W X 84" D	250,545
G	B	A	1	0	C	F	E	4	E	E	F	E	A	X	X	8	3	Feeder Section, 10,000A, 3 Phase / 4 Wire, (100% Neutral)Silver plated with no insulation, 480V (508V Max.), 100kA, E3 800A frame, E3 800A frame, E3 1200A frame, E3 800A frame, Type 1, No Doors (Hinges and latches only), 92" H X 30" W X 84" D	271,566



# Feeder breaker sections

65 kA, 30" wide

Catalog Number													Description	List Price					
G	B	A	6	0	C	F	E	4	E	F	F	E	A	X	X	7	3	Feeder Section, 6000A, 3 Phase / 4 Wire, (100% Neutral)Silver plated with no insulation, 480V (508V Max.), 100kA, E3 800A frame, E3 1200A frame, E3 1200A frame, E3 800A frame, Type 1, No Doors (Hinges and latches only), 92" H X 30" W X 72" D	\$ 216,922
G	B	A	8	0	C	F	E	4	E	F	F	E	A	X	X	8	3	Feeder Section, 8000A, 3 Phase / 4 Wire, (100% Neutral)Silver plated with no insulation, 480V (508V Max.), 100kA, E3 800A frame, E3 1200A frame, E3 1200A frame, E3 800A frame, Type 1, No Doors (Hinges and latches only), 92" H X 30" W X 84" D	252,009
G	B	A	1	0	C	F	E	4	E	F	F	E	A	X	X	8	3	Feeder Section, 10,000A, 3 Phase / 4 Wire, (100% Neutral)Silver plated with no insulation, 480V (508V Max.), 100kA, E3 800A frame, E3 1200A frame, E3 1200A frame, E3 800A frame, Type 1, No Doors (Hinges and latches only), 92" H X 30" W X 84" D	273,030
G	B	A	4	0	C	F	E	4	E	G	E	E	A	X	X	7	3	Feeder Section, 4000A, 3 Phase / 4 Wire, (100% Neutral)Silver plated with no insulation, 480V (508V Max.), 100kA, E3 800A frame, E3 1600A frame, E3 800A frame, E3 800A frame, Type 1, No Doors (Hinges and latches only), 92" H X 30" W X 72" D	193,461
G	B	A	5	0	C	F	E	4	E	G	E	E	A	X	X	7	3	Feeder Section, 5000A, 3 Phase / 4 Wire, (100% Neutral)Silver plated with no insulation, 480V (508V Max.), 100kA, E3 800A frame, E3 1600A frame, E3 800A frame, E3 800A frame, Type 1, No Doors (Hinges and latches only), 92" H X 30" W X 72" D	201,050
G	B	A	6	0	C	F	E	4	E	G	E	E	A	X	X	7	3	Feeder Section, 6000A, 3 Phase / 4 Wire, (100% Neutral)Silver plated with no insulation, 480V (508V Max.), 100kA, E3 800A frame, E3 1600A frame, E3 800A frame, E3 800A frame, Type 1, No Doors (Hinges and latches only), 92" H X 30" W X 72" D	219,411
G	B	A	8	0	C	F	E	4	E	G	E	E	A	X	X	8	3	Feeder Section, 8000A, 3 Phase / 4 Wire, (100% Neutral)Silver plated with no insulation, 480V (508V Max.), 100kA, E3 800A frame, E3 1600A frame, E3 800A frame, E3 800A frame, Type 1, No Doors (Hinges and latches only), 92" H X 30" W X 84" D	254,498
G	B	A	1	0	C	F	E	4	E	G	E	E	A	X	X	8	3	Feeder Section, 10,000A, 3 Phase / 4 Wire, (100% Neutral)Silver plated with no insulation, 480V (508V Max.), 100kA, E3 800A frame, E3 1600A frame, E3 800A frame, E3 800A frame, Type 1, No Doors (Hinges and latches only), 92" H X 30" W X 84" D	275,518
G	B	A	4	0	C	F	E	4	F	E	E	E	A	X	X	7	3	Feeder Section, 4000A, 3 Phase / 4 Wire, (100% Neutral)Silver plated with no insulation, 480V (508V Max.), 100kA, E3 1200A frame, E3 800A frame, E3 800A frame, E3 800A frame, Type 1, No Doors (Hinges and latches only), 92" H X 30" W X 72" D	189,508
G	B	A	5	0	C	F	E	4	F	E	E	E	A	X	X	7	3	Feeder Section, 5000A, 3 Phase / 4 Wire, (100% Neutral)Silver plated with no insulation, 480V (508V Max.), 100kA, E3 1200A frame, E3 800A frame, E3 800A frame, E3 800A frame, Type 1, No Doors (Hinges and latches only), 92" H X 30" W X 72" D	197,097
G	B	A	6	0	C	F	E	4	F	E	E	E	A	X	X	7	3	Feeder Section, 6000A, 3 Phase / 4 Wire, (100% Neutral)Silver plated with no insulation, 480V (508V Max.), 100kA, E3 1200A frame, E3 800A frame, E3 800A frame, E3 800A frame, Type 1, No Doors (Hinges and latches only), 92" H X 30" W X 72" D	215,458
G	B	A	8	0	C	F	E	4	F	E	E	E	A	X	X	8	3	Feeder Section, 8000A, 3 Phase / 4 Wire, (100% Neutral)Silver plated with no insulation, 480V (508V Max.), 100kA, E3 1200A frame, E3 800A frame, E3 800A frame, E3 800A frame, Type 1, No Doors (Hinges and latches only), 92" H X 30" W X 84" D	250,545
G	B	A	1	0	C	F	E	4	F	E	E	E	A	X	X	8	3	Feeder Section, 10,000A, 3 Phase / 4 Wire, (100% Neutral)Silver plated with no insulation, 480V (508V Max.), 100kA, E3 1200A frame, E3 800A frame, E3 800A frame, E3 800A frame, Type 1, No Doors (Hinges and latches only), 92" H X 30" W X 84" D	271,566
G	B	A	4	0	C	F	E	4	F	E	E	F	A	X	X	7	3	Feeder Section, 4000A, 3 Phase / 4 Wire, (100% Neutral)Silver plated with no insulation, 480V (508V Max.), 100kA, E3 1200A frame, E3 800A frame, E3 800A frame, E3 1200A frame, Type 1, No Doors (Hinges and latches only), 92" H X 30" W X 72" D	190,972
G	B	A	5	0	C	F	E	4	F	E	E	F	A	X	X	7	3	Feeder Section, 5000A, 3 Phase / 4 Wire, (100% Neutral)Silver plated with no insulation, 480V (508V Max.), 100kA, E3 1200A frame, E3 800A frame, E3 800A frame, E3 1200A frame, Type 1, No Doors (Hinges and latches only), 92" H X 30" W X 72" D	198,561
G	B	A	6	0	C	F	E	4	F	E	E	F	A	X	X	7	3	Feeder Section, 6000A, 3 Phase / 4 Wire, (100% Neutral)Silver plated with no insulation, 480V (508V Max.), 100kA, E3 1200A frame, E3 800A frame, E3 800A frame, E3 1200A frame, Type 1, No Doors (Hinges and latches only), 92" H X 30" W X 72" D	216,922
G	B	A	8	0	C	F	E	4	F	E	E	F	A	X	X	8	3	Feeder Section, 8000A, 3 Phase / 4 Wire, (100% Neutral)Silver plated with no insulation, 480V (508V Max.), 100kA, E3 1200A frame, E3 800A frame, E3 800A frame, E3 1200A frame, Type 1, No Doors (Hinges and latches only), 92" H X 30" W X 84" D	252,009
G	B	A	1	0	C	F	E	4	F	E	E	F	A	X	X	8	3	Feeder Section, 10,000A, 3 Phase / 4 Wire, (100% Neutral)Silver plated with no insulation, 480V (508V Max.), 100kA, E3 1200A frame, E3 800A frame, E3 800A frame, E3 1200A frame, Type 1, No Doors (Hinges and latches only), 92" H X 30" W X 84" D	273,030
G	B	A	4	0	C	F	E	4	F	E	F	E	A	X	X	7	3	Feeder Section, 4000A, 3 Phase / 4 Wire, (100% Neutral)Silver plated with no insulation, 480V (508V Max.), 100kA, E3 1200A frame, E3 800A frame, E3 1200A frame, E3 800A frame, Type 1, No Doors (Hinges and latches only), 92" H X 30" W X 72" D	190,972
G	B	A	5	0	C	F	E	4	F	E	F	E	A	X	X	7	3	Feeder Section, 5000A, 3 Phase / 4 Wire, (100% Neutral)Silver plated with no insulation, 480V (508V Max.), 100kA, E3 1200A frame, E3 800A frame, E3 1200A frame, E3 800A frame, Type 1, No Doors (Hinges and latches only), 92" H X 30" W X 72" D	198,561
G	B	A	6	0	C	F	E	4	F	E	F	E	A	X	X	7	3	Feeder Section, 6000A, 3 Phase / 4 Wire, (100% Neutral)Silver plated with no insulation, 480V (508V Max.), 100kA, E3 1200A frame, E3 800A frame, E3 1200A frame, E3 800A frame, Type 1, No Doors (Hinges and latches only), 92" H X 30" W X 72" D	216,922
G	B	A	8	0	C	F	E	4	F	E	F	E	A	X	X	8	3	Feeder Section, 8000A, 3 Phase / 4 Wire, (100% Neutral)Silver plated with no insulation, 480V (508V Max.), 100kA, E3 1200A frame, E3 800A frame, E3 1200A frame, E3 800A frame, Type 1, No Doors (Hinges and latches only), 92" H X 30" W X 84" D	252,009

## 65 kA, 30" wide

Catalog Number															Description	List Price			
G	B	A	1	0	C	F	E	4	F	E	F	E	A	X	X	8	3	Feeder Section, 10,000A, 3 Phase / 4 Wire, (100% Neutral)Silver plated with no insulation, 480V (508V Max.), 100kA, E3 1200A frame, E3 800A frame, E3 1200A frame, E3 800A frame, Type 1, No Doors (Hinges and latches only), 92" H X 30" W X 84" D	\$ 273,030
G	B	A	4	0	C	F	E	4	F	F	E	E	A	X	X	7	3	Feeder Section, 4000A, 3 Phase / 4 Wire, (100% Neutral)Silver plated with no insulation, 480V (508V Max.), 100kA, E3 1200A frame, E3 1200A frame, E3 800A frame, E3 800A frame, Type 1, No Doors (Hinges and latches only), 92" H X 30" W X 72" D	190,972
G	B	A	5	0	C	F	E	4	F	F	E	E	A	X	X	7	3	Feeder Section, 5000A, 3 Phase / 4 Wire, (100% Neutral)Silver plated with no insulation, 480V (508V Max.), 100kA, E3 1200A frame, E3 1200A frame, E3 800A frame, E3 800A frame, Type 1, No Doors (Hinges and latches only), 92" H X 30" W X 72" D	198,561
G	B	A	6	0	C	F	E	4	F	F	E	E	A	X	X	7	3	Feeder Section, 6000A, 3 Phase / 4 Wire, (100% Neutral)Silver plated with no insulation, 480V (508V Max.), 100kA, E3 1200A frame, E3 1200A frame, E3 800A frame, E3 800A frame, Type 1, No Doors (Hinges and latches only), 92" H X 30" W X 72" D	216,922
G	B	A	8	0	C	F	E	4	F	F	E	E	A	X	X	8	3	Feeder Section, 8000A, 3 Phase / 4 Wire, (100% Neutral)Silver plated with no insulation, 480V (508V Max.), 100kA, E3 1200A frame, E3 1200A frame, E3 800A frame, E3 800A frame, Type 1, No Doors (Hinges and latches only), 92" H X 30" W X 84" D	252,009
G	B	A	1	0	C	F	E	4	F	F	E	E	A	X	X	8	3	Feeder Section, 10,000A, 3 Phase / 4 Wire, (100% Neutral)Silver plated with no insulation, 480V (508V Max.), 100kA, E3 1200A frame, E3 1200A frame, E3 800A frame, E3 800A frame, Type 1, No Doors (Hinges and latches only), 92" H X 30" W X 84" D	273,030
G	B	A	4	0	C	F	E	4	G	E	E	E	A	X	X	7	3	Feeder Section, 4000A, 3 Phase / 4 Wire, (100% Neutral)Silver plated with no insulation, 480V (508V Max.), 100kA, E3 1600A frame, E3 800A frame, E3 800A frame, E3 800A frame, Type 1, No Doors (Hinges and latches only), 92" H X 30" W X 72" D	193,461
G	B	A	5	0	C	F	E	4	G	E	E	E	A	X	X	7	3	Feeder Section, 5000A, 3 Phase / 4 Wire, (100% Neutral)Silver plated with no insulation, 480V (508V Max.), 100kA, E3 1600A frame, E3 800A frame, E3 800A frame, E3 800A frame, Type 1, No Doors (Hinges and latches only), 92" H X 30" W X 72" D	201,050
G	B	A	6	0	C	F	E	4	G	E	E	E	A	X	X	7	3	Feeder Section, 6000A, 3 Phase / 4 Wire, (100% Neutral)Silver plated with no insulation, 480V (508V Max.), 100kA, E3 1600A frame, E3 800A frame, E3 800A frame, E3 800A frame, Type 1, No Doors (Hinges and latches only), 92" H X 30" W X 72" D	219,411
G	B	A	8	0	C	F	E	4	G	E	E	E	A	X	X	8	3	Feeder Section, 8000A, 3 Phase / 4 Wire, (100% Neutral)Silver plated with no insulation, 480V (508V Max.), 100kA, E3 1600A frame, E3 800A frame, E3 800A frame, E3 800A frame, Type 1, No Doors (Hinges and latches only), 92" H X 30" W X 84" D	254,498
G	B	A	1	0	C	F	E	4	G	E	E	E	A	X	X	8	3	Feeder Section, 10,000A, 3 Phase / 4 Wire, (100% Neutral)Silver plated with no insulation, 480V (508V Max.), 100kA, E3 1600A frame, E3 800A frame, E3 800A frame, E3 800A frame, Type 1, No Doors (Hinges and latches only), 92" H X 30" W X 84" D	275,518

**NOTES**

1. For silver plated bus with powder coat epoxy insulation change position 3 to (B), for tin plated bus change position 3 to (D), for tin plated bus insulated with powder coat epoxy insulation change position 3 to (E).
2. For 3P4W, change position 2 to (B). Neutral current sensors are not included.
3. The preferred location for feeder breakers is with the largest rated breaker at the bottom of the section, when multiple adjoining instrument compartments are ordered they will be configured as a single larger instrument compartment rather than multiple smaller compartments.
4. For feeder breakers rated greater than 800 amps replace positions 10, 11, 12 or 13 with (F) for 1200 amps, (G) for 1600 amps, or (H) for 2000 amps, the vertical bus is subject to cumulative loading.















## 100 kA, 30" wide

Catalog Number													Description	List Price					
G	B	A	6	0	C	F	E	4	E	F	F	E	A	X	X	7	3	Feeder Section, 6000A, 3 Phase / 4 Wire, (100% Neutral)Silver plated with no insulation, 480V (508V Max.), 100kA, E3 800A frame, E3 1200A frame, E3 1200A frame, E3 800A frame, Type 1, No Doors (Hinges and latches only), 92" H X 30" W X 72" D	\$ 216,922
G	B	A	8	0	C	F	E	4	E	F	F	E	A	X	X	8	3	Feeder Section, 8000A, 3 Phase / 4 Wire, (100% Neutral)Silver plated with no insulation, 480V (508V Max.), 100kA, E3 800A frame, E3 1200A frame, E3 1200A frame, E3 800A frame, Type 1, No Doors (Hinges and latches only), 92" H X 30" W X 84" D	252,009
G	B	A	1	0	C	F	E	4	E	F	F	E	A	X	X	8	3	Feeder Section, 10,000A, 3 Phase / 4 Wire, (100% Neutral)Silver plated with no insulation, 480V (508V Max.), 100kA, E3 800A frame, E3 1200A frame, E3 1200A frame, E3 800A frame, Type 1, No Doors (Hinges and latches only), 92" H X 30" W X 84" D	273,030
G	B	A	4	0	C	F	E	4	E	G	E	E	A	X	X	7	3	Feeder Section, 4000A, 3 Phase / 4 Wire, (100% Neutral)Silver plated with no insulation, 480V (508V Max.), 100kA, E3 800A frame, E3 1600A frame, E3 800A frame, E3 800A frame, Type 1, No Doors (Hinges and latches only), 92" H X 30" W X 72" D	193,461
G	B	A	5	0	C	F	E	4	E	G	E	E	A	X	X	7	3	Feeder Section, 5000A, 3 Phase / 4 Wire, (100% Neutral)Silver plated with no insulation, 480V (508V Max.), 100kA, E3 800A frame, E3 1600A frame, E3 800A frame, E3 800A frame, Type 1, No Doors (Hinges and latches only), 92" H X 30" W X 72" D	201,050
G	B	A	6	0	C	F	E	4	E	G	E	E	A	X	X	7	3	Feeder Section, 6000A, 3 Phase / 4 Wire, (100% Neutral)Silver plated with no insulation, 480V (508V Max.), 100kA, E3 800A frame, E3 1600A frame, E3 800A frame, E3 800A frame, Type 1, No Doors (Hinges and latches only), 92" H X 30" W X 72" D	219,411
G	B	A	8	0	C	F	E	4	E	G	E	E	A	X	X	8	3	Feeder Section, 8000A, 3 Phase / 4 Wire, (100% Neutral)Silver plated with no insulation, 480V (508V Max.), 100kA, E3 800A frame, E3 1600A frame, E3 800A frame, E3 800A frame, Type 1, No Doors (Hinges and latches only), 92" H X 30" W X 84" D	254,498
G	B	A	1	0	C	F	E	4	E	G	E	E	A	X	X	8	3	Feeder Section, 10,000A, 3 Phase / 4 Wire, (100% Neutral)Silver plated with no insulation, 480V (508V Max.), 100kA, E3 800A frame, E3 1600A frame, E3 800A frame, E3 800A frame, Type 1, No Doors (Hinges and latches only), 92" H X 30" W X 84" D	275,518
G	B	A	4	0	C	F	E	4	F	E	E	E	A	X	X	7	3	Feeder Section, 4000A, 3 Phase / 4 Wire, (100% Neutral)Silver plated with no insulation, 480V (508V Max.), 100kA, E3 1200A frame, E3 800A frame, E3 800A frame, E3 800A frame, Type 1, No Doors (Hinges and latches only), 92" H X 30" W X 72" D	189,508
G	B	A	5	0	C	F	E	4	F	E	E	E	A	X	X	7	3	Feeder Section, 5000A, 3 Phase / 4 Wire, (100% Neutral)Silver plated with no insulation, 480V (508V Max.), 100kA, E3 1200A frame, E3 800A frame, E3 800A frame, E3 800A frame, Type 1, No Doors (Hinges and latches only), 92" H X 30" W X 72" D	197,097
G	B	A	6	0	C	F	E	4	F	E	E	E	A	X	X	7	3	Feeder Section, 6000A, 3 Phase / 4 Wire, (100% Neutral)Silver plated with no insulation, 480V (508V Max.), 100kA, E3 1200A frame, E3 800A frame, E3 800A frame, E3 800A frame, Type 1, No Doors (Hinges and latches only), 92" H X 30" W X 72" D	215,458
G	B	A	8	0	C	F	E	4	F	E	E	E	A	X	X	8	3	Feeder Section, 8000A, 3 Phase / 4 Wire, (100% Neutral)Silver plated with no insulation, 480V (508V Max.), 100kA, E3 1200A frame, E3 800A frame, E3 800A frame, E3 800A frame, Type 1, No Doors (Hinges and latches only), 92" H X 30" W X 84" D	250,545
G	B	A	1	0	C	F	E	4	F	E	E	E	A	X	X	8	3	Feeder Section, 10,000A, 3 Phase / 4 Wire, (100% Neutral)Silver plated with no insulation, 480V (508V Max.), 100kA, E3 1200A frame, E3 800A frame, E3 800A frame, E3 800A frame, Type 1, No Doors (Hinges and latches only), 92" H X 30" W X 84" D	271,566
G	B	A	4	0	C	F	E	4	F	E	E	F	A	X	X	7	3	Feeder Section, 4000A, 3 Phase / 4 Wire, (100% Neutral)Silver plated with no insulation, 480V (508V Max.), 100kA, E3 1200A frame, E3 800A frame, E3 800A frame, E3 1200A frame, Type 1, No Doors (Hinges and latches only), 92" H X 30" W X 72" D	190,972
G	B	A	5	0	C	F	E	4	F	E	E	F	A	X	X	7	3	Feeder Section, 5000A, 3 Phase / 4 Wire, (100% Neutral)Silver plated with no insulation, 480V (508V Max.), 100kA, E3 1200A frame, E3 800A frame, E3 800A frame, E3 1200A frame, Type 1, No Doors (Hinges and latches only), 92" H X 30" W X 72" D	198,561
G	B	A	6	0	C	F	E	4	F	E	E	F	A	X	X	7	3	Feeder Section, 6000A, 3 Phase / 4 Wire, (100% Neutral)Silver plated with no insulation, 480V (508V Max.), 100kA, E3 1200A frame, E3 800A frame, E3 800A frame, E3 1200A frame, Type 1, No Doors (Hinges and latches only), 92" H X 30" W X 72" D	216,922
G	B	A	8	0	C	F	E	4	F	E	E	F	A	X	X	8	3	Feeder Section, 8000A, 3 Phase / 4 Wire, (100% Neutral)Silver plated with no insulation, 480V (508V Max.), 100kA, E3 1200A frame, E3 800A frame, E3 800A frame, E3 1200A frame, Type 1, No Doors (Hinges and latches only), 92" H X 30" W X 84" D	252,009
G	B	A	1	0	C	F	E	4	F	E	E	F	A	X	X	8	3	Feeder Section, 10,000A, 3 Phase / 4 Wire, (100% Neutral)Silver plated with no insulation, 480V (508V Max.), 100kA, E3 1200A frame, E3 800A frame, E3 800A frame, E3 1200A frame, Type 1, No Doors (Hinges and latches only), 92" H X 30" W X 84" D	273,030
G	B	A	4	0	C	F	E	4	F	E	F	E	A	X	X	7	3	Feeder Section, 4000A, 3 Phase / 4 Wire, (100% Neutral)Silver plated with no insulation, 480V (508V Max.), 100kA, E3 1200A frame, E3 800A frame, E3 1200A frame, E3 800A frame, Type 1, No Doors (Hinges and latches only), 92" H X 30" W X 72" D	190,972
G	B	A	5	0	C	F	E	4	F	E	F	E	A	X	X	7	3	Feeder Section, 5000A, 3 Phase / 4 Wire, (100% Neutral)Silver plated with no insulation, 480V (508V Max.), 100kA, E3 1200A frame, E3 800A frame, E3 1200A frame, E3 800A frame, Type 1, No Doors (Hinges and latches only), 92" H X 30" W X 72" D	198,561
G	B	A	6	0	C	F	E	4	F	E	F	E	A	X	X	7	3	Feeder Section, 6000A, 3 Phase / 4 Wire, (100% Neutral)Silver plated with no insulation, 480V (508V Max.), 100kA, E3 1200A frame, E3 800A frame, E3 1200A frame, E3 800A frame, Type 1, No Doors (Hinges and latches only), 92" H X 30" W X 72" D	216,922
G	B	A	8	0	C	F	E	4	F	E	F	E	A	X	X	8	3	Feeder Section, 8000A, 3 Phase / 4 Wire, (100% Neutral)Silver plated with no insulation, 480V (508V Max.), 100kA, E3 1200A frame, E3 800A frame, E3 1200A frame, E3 800A frame, Type 1, No Doors (Hinges and latches only), 92" H X 30" W X 84" D	252,009

# Feeder breaker sections

## 100 kA, 30" wide

Catalog Number														Description	List Price				
G	B	A	1	0	C	F	E	4	F	E	F	E	A	X	X	8	3	Feeder Section, 10,000A, 3 Phase / 4 Wire, (100% Neutral)Silver plated with no insulation, 480V (508V Max.), 100kA, E3 1200A frame, E3 800A frame, E3 1200A frame, E3 800A frame, Type 1, No Doors (Hinges and latches only), 92" H X 30" W X 84" D	\$ 273,030
G	B	A	4	0	C	F	E	4	F	F	E	E	A	X	X	7	3	Feeder Section, 4000A, 3 Phase / 4 Wire, (100% Neutral)Silver plated with no insulation, 480V (508V Max.), 100kA, E3 1200A frame, E3 1200A frame, E3 800A frame, E3 800A frame, Type 1, No Doors (Hinges and latches only), 92" H X 30" W X 72" D	190,972
G	B	A	5	0	C	F	E	4	F	F	E	E	A	X	X	7	3	Feeder Section, 5000A, 3 Phase / 4 Wire, (100% Neutral)Silver plated with no insulation, 480V (508V Max.), 100kA, E3 1200A frame, E3 1200A frame, E3 800A frame, E3 800A frame, Type 1, No Doors (Hinges and latches only), 92" H X 30" W X 72" D	198,561
G	B	A	6	0	C	F	E	4	F	F	E	E	A	X	X	7	3	Feeder Section, 6000A, 3 Phase / 4 Wire, (100% Neutral)Silver plated with no insulation, 480V (508V Max.), 100kA, E3 1200A frame, E3 1200A frame, E3 800A frame, E3 800A frame, Type 1, No Doors (Hinges and latches only), 92" H X 30" W X 72" D	216,922
G	B	A	8	0	C	F	E	4	F	F	E	E	A	X	X	8	3	Feeder Section, 8000A, 3 Phase / 4 Wire, (100% Neutral)Silver plated with no insulation, 480V (508V Max.), 100kA, E3 1200A frame, E3 1200A frame, E3 800A frame, E3 800A frame, Type 1, No Doors (Hinges and latches only), 92" H X 30" W X 84" D	252,009
G	B	A	1	0	C	F	E	4	F	F	E	E	A	X	X	8	3	Feeder Section, 10,000A, 3 Phase / 4 Wire, (100% Neutral)Silver plated with no insulation, 480V (508V Max.), 100kA, E3 1200A frame, E3 1200A frame, E3 800A frame, E3 800A frame, Type 1, No Doors (Hinges and latches only), 92" H X 30" W X 84" D	273,030
G	B	A	4	0	C	F	E	4	G	E	E	E	A	X	X	7	3	Feeder Section, 4000A, 3 Phase / 4 Wire, (100% Neutral)Silver plated with no insulation, 480V (508V Max.), 100kA, E3 1600A frame, E3 800A frame, E3 800A frame, E3 800A frame, Type 1, No Doors (Hinges and latches only), 92" H X 30" W X 72" D	193,461
G	B	A	5	0	C	F	E	4	G	E	E	E	A	X	X	7	3	Feeder Section, 5000A, 3 Phase / 4 Wire, (100% Neutral)Silver plated with no insulation, 480V (508V Max.), 100kA, E3 1600A frame, E3 800A frame, E3 800A frame, E3 800A frame, Type 1, No Doors (Hinges and latches only), 92" H X 30" W X 72" D	201,050
G	B	A	6	0	C	F	E	4	G	E	E	E	A	X	X	7	3	Feeder Section, 6000A, 3 Phase / 4 Wire, (100% Neutral)Silver plated with no insulation, 480V (508V Max.), 100kA, E3 1600A frame, E3 800A frame, E3 800A frame, E3 800A frame, Type 1, No Doors (Hinges and latches only), 92" H X 30" W X 72" D	219,411
G	B	A	8	0	C	F	E	4	G	E	E	E	A	X	X	8	3	Feeder Section, 8000A, 3 Phase / 4 Wire, (100% Neutral)Silver plated with no insulation, 480V (508V Max.), 100kA, E3 1600A frame, E3 800A frame, E3 800A frame, E3 800A frame, Type 1, No Doors (Hinges and latches only), 92" H X 30" W X 84" D	254,498
G	B	A	1	0	C	F	E	4	G	E	E	E	A	X	X	8	3	Feeder Section, 10,000A, 3 Phase / 4 Wire, (100% Neutral)Silver plated with no insulation, 480V (508V Max.), 100kA, E3 1600A frame, E3 800A frame, E3 800A frame, E3 800A frame, Type 1, No Doors (Hinges and latches only), 92" H X 30" W X 84" D	275,518

### NOTES

1. For silver plated bus with powder coat epoxy insulation change position 3 to (B), for tin plated bus change position 3 to (D), for tin plated bus insulated with powder coat epoxy insulation change position 3 to (E).
2. For 3P4W, change position 2 to (B). Neutral current sensors are not included.
3. The preferred location for feeder breakers is with the largest rated breaker at the bottom of the section, when multiple adjoining instrument compartments are ordered they will be configured as a single larger instrument compartment rather than multiple smaller compartments.
4. For feeder breakers rated greater than 800 amps replace positions 10, 11, 12 or 13 with (F) for 1200 amps, (G) for 1600 amps, or (H) for 2000 amps, the vertical bus is subject to cumulative loading.

## 65 kA

Catalog Number													Description		List Price			
G	A	A	2	0	X	A	C	4	A	A	A	A	X	X	6	2	Auxiliary Section, 2000A, 3 Phase / 3 Wire, Silver plated with no insulation, 480V (508V Max.), 65kA, Instrument Compartment, Type 1, No Doors (Hinges and latches only), 92" H X 24" W X 60" D	\$ 32,489
G	A	A	2	5	X	A	C	4	A	A	A	A	X	X	6	2	Auxiliary Section, 2500A, 3 Phase / 3 Wire, Silver plated with no insulation, 480V (508V Max.), 65kA, Instrument Compartment, Type 1, No Doors (Hinges and latches only), 92" H X 24" W X 60" D	32,489
G	A	A	3	2	X	A	C	4	A	A	A	A	X	X	7	2	Auxiliary Section, 3200A, 3 Phase / 3 Wire, Silver plated with no insulation, 480V (508V Max.), 65kA, Instrument Compartment, Type 1, No Doors (Hinges and latches only), 92" H X 24" W X 72" D	35,258
G	B	A	2	0	X	A	C	4	A	A	A	A	X	X	6	2	Auxiliary Section, 2000A, 3 Phase / 4 Wire (100% Neutral), Silver plated with no insulation, 480V (508V Max.), 65kA, Instrument Compartment, Type 1, No Doors (Hinges and latches only), 92" H X 24" W X 60" D	35,734
G	B	A	2	5	X	A	C	4	A	A	A	A	X	X	6	2	Auxiliary Section, 2500A, 3 Phase / 4 Wire (100% Neutral), Silver plated with no insulation, 480V (508V Max.), 65kA, Instrument Compartment, Type 1, No Doors (Hinges and latches only), 92" H X 24" W X 60" D	35,734
G	B	A	3	2	X	A	C	4	A	A	A	A	X	X	7	2	Auxiliary Section, 3200A, 3 Phase / 4 Wire (100% Neutral), Silver plated with no insulation, 480V (508V Max.), 65kA, Instrument Compartment, Type 1, No Doors (Hinges and latches only), 92" H X 24" W X 72" D	41,504
G	A	A	2	0	X	A	C	4	A	A	A	A	X	X	6	3	Auxiliary Section, 2000A, 3 Phase / 3 Wire, Silver plated with no insulation, 480V (508V Max.), 65kA, Instrument Compartment, Type 1, No Doors (Hinges and latches only), 92" H X 30" W X 60" D	34,624
G	A	A	2	5	X	A	C	4	A	A	A	A	X	X	6	3	Auxiliary Section, 2500A, 3 Phase / 3 Wire, Silver plated with no insulation, 480V (508V Max.), 65kA, Instrument Compartment, Type 1, No Doors (Hinges and latches only), 92" H X 30" W X 60" D	34,624
G	A	A	3	2	X	A	C	4	A	A	A	A	X	X	7	3	Auxiliary Section, 3200A, 3 Phase / 3 Wire, Silver plated with no insulation, 480V (508V Max.), 65kA, Instrument Compartment, Type 1, No Doors (Hinges and latches only), 92" H X 30" W X 72" D	39,943
G	A	A	4	0	X	A	C	4	A	A	A	A	X	X	7	3	Auxiliary Section, 4000A, 3 Phase / 3 Wire, Silver plated with no insulation, 480V (508V Max.), 65kA, Instrument Compartment, Type 1, No Doors (Hinges and latches only), 92" H X 30" W X 72" D	40,748
G	A	A	5	0	X	A	C	4	A	A	A	A	X	X	7	3	Auxiliary Section, 5000A, 3 Phase / 3 Wire, Silver plated with no insulation, 480V (508V Max.), 65kA, Instrument Compartment, Type 1, No Doors (Hinges and latches only), 92" H X 30" W X 72" D	47,324
G	A	A	6	0	X	A	C	4	A	A	A	A	X	X	7	3	Auxiliary Section, 6000A, 3 Phase / 3 Wire, Silver plated with no insulation, 480V (508V Max.), 65kA, Instrument Compartment, Type 1, No Doors (Hinges and latches only), 92" H X 30" W X 72" D	61,903
G	A	A	8	0	X	A	C	4	A	A	A	A	X	X	8	3	Auxiliary Section, 8000A, 3 Phase / 3 Wire, Silver plated with no insulation, 480V (508V Max.), 65kA, Instrument Compartment, Type 1, No Doors (Hinges and latches only), 92" H X 30" W X 84" D	88,657
G	A	A	1	0	X	A	C	4	A	A	A	A	X	X	8	3	Auxiliary Section, 10,000A, 3 Phase / 3 Wire, Silver plated with no insulation, 480V (508V Max.), 65kA, Instrument Compartment, Type 1, No Doors (Hinges and latches only), 92" H X 30" W X 84" D	100,577
G	B	A	2	0	X	A	C	4	A	A	A	A	X	X	6	3	Auxiliary Section, 2000A, 3 Phase / 4 Wire (100% Neutral), Silver plated with no insulation, 480V (508V Max.), 65kA, Instrument Compartment, Type 1, No Doors (Hinges and latches only), 92" H X 30" W X 60" D	38,418
G	B	A	2	5	X	A	C	4	A	A	A	A	X	X	6	3	Auxiliary Section, 2500A, 3 Phase / 4 Wire (100% Neutral), Silver plated with no insulation, 480V (508V Max.), 65kA, Instrument Compartment, Type 1, No Doors (Hinges and latches only), 92" H X 30" W X 60" D	38,418
G	B	A	3	2	X	A	C	4	A	A	A	A	X	X	7	3	Auxiliary Section, 3200A, 3 Phase / 4 Wire (100% Neutral), Silver plated with no insulation, 480V (508V Max.), 65kA, Instrument Compartment, Type 1, No Doors (Hinges and latches only), 92" H X 30" W X 72" D	45,360
G	B	A	4	0	X	A	C	4	A	A	A	A	X	X	7	3	Auxiliary Section, 4000A, 3 Phase / 4 Wire (100% Neutral), Silver plated with no insulation, 480V (508V Max.), 65kA, Instrument Compartment, Type 1, No Doors (Hinges and latches only), 92" H X 30" W X 72" D	46,433
G	B	A	5	0	X	A	C	4	A	A	A	A	X	X	7	3	Auxiliary Section, 5000A, 3 Phase / 4 Wire (100% Neutral), Silver plated with no insulation, 480V (508V Max.), 65kA, Instrument Compartment, Type 1, No Doors (Hinges and latches only), 92" H X 30" W X 72" D	54,900
G	B	A	6	0	X	A	C	4	A	A	A	A	X	X	7	3	Auxiliary Section, 6000A, 3 Phase / 4 Wire (100% Neutral), Silver plated with no insulation, 480V (508V Max.), 65kA, Instrument Compartment, Type 1, No Doors (Hinges and latches only), 92" H X 30" W X 72" D	73,273
G	B	A	8	0	X	A	C	4	A	A	A	A	X	X	8	3	Auxiliary Section, 8000A, 3 Phase / 4 Wire (100% Neutral), Silver plated with no insulation, 480V (508V Max.), 65kA, Instrument Compartment, Type 1, No Doors (Hinges and latches only), 92" H X 30" W X 84" D	108,348
G	B	A	1	0	X	A	C	4	A	A	A	A	X	X	8	3	Auxiliary Section, 10,000A, 3 Phase / 4 Wire (100% Neutral), Silver plated with no insulation, 480V (508V Max.), 65kA, Instrument Compartment, Type 1, No Doors (Hinges and latches only), 92" H X 30" W X 84" D	123,879
G	A	A	2	0	X	A	C	4	A	A	A	A	X	X	6	4	Auxiliary Section, 2000A, 3 Phase / 3 Wire, Silver plated with no insulation, 480V (508V Max.), 65kA, Instrument Compartment, Type 1, No Doors (Hinges and latches only), 92" H X 40" W X 60" D	38,162
G	A	A	2	5	X	A	C	4	A	A	A	A	X	X	6	4	Auxiliary Section, 2500A, 3 Phase / 3 Wire, Silver plated with no insulation, 480V (508V Max.), 65kA, Instrument Compartment, Type 1, No Doors (Hinges and latches only), 92" H X 40" W X 60" D	38,162
G	A	A	3	2	X	A	C	4	A	A	A	A	X	X	7	4	Auxiliary Section, 3200A, 3 Phase / 3 Wire, Silver plated with no insulation, 480V (508V Max.), 65kA, Instrument Compartment, Type 1, No Doors (Hinges and latches only), 92" H X 40" W X 72" D	45,201
G	A	A	4	0	X	A	C	4	A	A	A	A	X	X	7	4	Auxiliary Section, 4000A, 3 Phase / 3 Wire, Silver plated with no insulation, 480V (508V Max.), 65kA, Instrument Compartment, Type 1, No Doors (Hinges and latches only), 92" H X 40" W X 72" D	45,774



# Auxiliary sections

## 65 kA

Catalog Number														Description	List Price			
G	A	A	5	0	X	A	C	4	A	A	A	A	X	X	7	4	Auxiliary Section, 5000A, 3 Phase / 3 Wire, Silver plated with no insulation, 480V (508V Max.), 65kA, Instrument Compartment, Type 1, No Doors (Hinges and latches only), 92" H X 40" W X 72" D	\$ 53,717
G	A	A	6	0	X	A	C	4	A	A	A	A	X	X	7	4	Auxiliary Section, 6000A, 3 Phase / 3 Wire, Silver plated with no insulation, 480V (508V Max.), 65kA, Instrument Compartment, Type 1, No Doors (Hinges and latches only), 92" H X 40" W X 72" D	71,041
G	A	A	8	0	X	A	C	4	A	A	A	A	X	X	8	4	Auxiliary Section, 8000A, 3 Phase / 3 Wire, Silver plated with no insulation, 480V (508V Max.), 65kA, Instrument Compartment, Type 1, No Doors (Hinges and latches only), 92" H X 40" W X 84" D	100,650
G	A	A	1	0	X	A	C	4	A	A	A	A	X	X	8	4	Auxiliary Section, 10,000A, 3 Phase / 3 Wire, Silver plated with no insulation, 480V (508V Max.), 65kA, Instrument Compartment, Type 1, No Doors (Hinges and latches only), 92" H X 40" W X 84" D	115,314
G	B	A	2	0	X	A	C	4	A	A	A	A	X	X	6	4	Auxiliary Section, 2000A, 3 Phase / 4 Wire (100% Neutral), Silver plated with no insulation, 480V (508V Max.), 65kA, Instrument Compartment, Type 1, No Doors (Hinges and latches only), 92" H X 40" W X 60" D	42,871
G	B	A	2	5	X	A	C	4	A	A	A	A	X	X	6	4	Auxiliary Section, 2500A, 3 Phase / 4 Wire (100% Neutral), Silver plated with no insulation, 480V (508V Max.), 65kA, Instrument Compartment, Type 1, No Doors (Hinges and latches only), 92" H X 40" W X 60" D	42,871
G	B	A	3	2	X	A	C	4	A	A	A	A	X	X	7	4	Auxiliary Section, 3200A, 3 Phase / 4 Wire (100% Neutral), Silver plated with no insulation, 480V (508V Max.), 65kA, Instrument Compartment, Type 1, No Doors (Hinges and latches only), 92" H X 40" W X 72" D	51,752
G	B	A	4	0	X	A	C	4	A	A	A	A	X	X	7	4	Auxiliary Section, 4000A, 3 Phase / 4 Wire (100% Neutral), Silver plated with no insulation, 480V (508V Max.), 65kA, Instrument Compartment, Type 1, No Doors (Hinges and latches only), 92" H X 40" W X 72" D	52,826
G	B	A	5	0	X	A	C	4	A	A	A	A	X	X	7	4	Auxiliary Section, 5000A, 3 Phase / 4 Wire (100% Neutral), Silver plated with no insulation, 480V (508V Max.), 65kA, Instrument Compartment, Type 1, No Doors (Hinges and latches only), 92" H X 40" W X 72" D	63,123
G	B	A	6	0	X	A	C	4	A	A	A	A	X	X	7	4	Auxiliary Section, 6000A, 3 Phase / 4 Wire (100% Neutral), Silver plated with no insulation, 480V (508V Max.), 65kA, Instrument Compartment, Type 1, No Doors (Hinges and latches only), 92" H X 40" W X 72" D	85,156
G	B	A	8	0	X	A	C	4	A	A	A	A	X	X	8	4	Auxiliary Section, 8000A, 3 Phase / 4 Wire (100% Neutral), Silver plated with no insulation, 480V (508V Max.), 65kA, Instrument Compartment, Type 1, No Doors (Hinges and latches only), 92" H X 40" W X 84" D	124,001
G	B	A	1	0	X	A	C	4	A	A	A	A	X	X	8	4	Auxiliary Section, 10,000A, 3 Phase / 4 Wire (100% Neutral), Silver plated with no insulation, 480V (508V Max.), 65kA, Instrument Compartment, Type 1, No Doors (Hinges and latches only), 92" H X 40" W X 84" D	143,191

## No bus

Catalog Number														Description	List Price			
G	X	X	0	0	X	A	X	X	A	A	A	A	X	X	6	2	Auxiliary Section, 0A, No bus provided, No bus provided, No Bus Voltage, No SC Rating, Instrument Compartment, Type 1, No Doors (Hinges and latches only), 92" H X 24" W X 60" D	\$ 19,117
G	X	X	0	0	X	A	X	X	A	A	A	A	X	X	6	3	Auxiliary Section, 0A, No bus provided, No bus provided, No Bus Voltage, No SC Rating, Instrument Compartment, Type 1, No Doors (Hinges and latches only), 92" H X 30" W X 60" D	19,605
G	X	X	0	0	X	A	X	X	A	A	A	A	X	X	6	4	Auxiliary Section, 0A, No bus provided, No bus provided, No Bus Voltage, No SC Rating, Instrument Compartment, Type 1, No Doors (Hinges and latches only), 92" H X 40" W X 60" D	20,398

### NOTES

1. The minimum section depth is 72" D for main bus ratings of 3200 - 6000 amps and 84" D for 8000 - 10,000 amps.
2. For a voltage rating of 600V, replace position 9 with (6).
3. Auxiliary sections provided with no bus also have no voltage rating, position 9 must be (X).



## Overhead lift device

Description	Catalog number	List price
Overhead lift device	GOVHDL	\$ 32,086
24" wide track for overhead lift device	GOVHD24	1,830
30" wide track for overhead lift device	GOVHD30	1,952
40" wide track for overhead lift device	GOVHD40	2,196

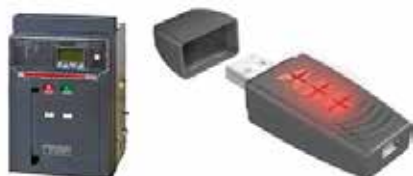
**Product / Price Group 52901**



## Lift truck

Description	Catalog number	List price
Lift truck	GCBLT	\$ 19,240

**Product / Price Group 52901**



## Ekip connect test kit

Description	Catalog number	List price
Ekip connect communication software	EKIP	\$ 5,080

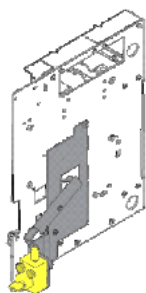
**Discount Schedule P0**





## Neutral current sensors

Breaker	Amps	Catalog number	List price
E3	800	KE3NCT	\$ 439
	1000		
	1200		
	1600		
	2000		
E4	2500	KE4NCT	867
	3000		
E6	3200	KE6NCT	867
	4000		
	5000		



## Kirk key lock adaptor plate

Breaker	Catalog number	List price
E3	KE6KKC-E3W	\$ 1,267
E4	KE6KKC-E4W	
E6	KE6KKC-E6W	

Note: Provision for kirk lock (kirk key lock not included; use lock Type F-1 inch bolt projection in withdrawn position)

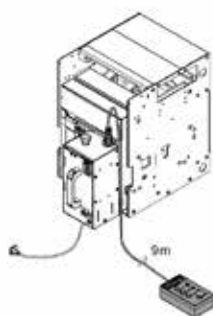
## Auxiliary and TOC contacts

Breaker contacts	Catalog number	List price
15 Aux contacts	KE6A15-W	\$ 1,598
5 TOC	KE6PS1	400
10 TOC	KE3PS3 (E3 frame)	799
	KE6PS2 (E4 & E6 frame)	



## Remote racking device

Description	Catalog number	List price
Remote racking device for up to 5 breakers	KERRD	\$ 12,000
Remote racking device adapter kit allows connections to up to 5 additional breakers	KERRDKIT	220





**Side cover kits**

Description	Catalog number	List price
Side cover kit for 60" deep enclosures	GSC60	\$ 6,259
Side cover kit for 72" deep enclosures	GSC72	7,430
Side cover kit for 84" deep enclosures	GSC84	8,601

Note: Side cover kits are for one side only and contain four (4) covers. For example, for each switchgear lineup you need to order two (2) side cover kits, one for the left hand side and another for the right hand side of the switchgear lineup.

**Rear cover kits**

Description	Catalog number	List price
Rear cover kit for 24" wide enclosures	GRC24	\$ 1,269
Rear cover kit for 30" wide enclosures	GRC30	1,537
Rear cover kit for 40" wide enclosures	GRC40	1,989

Note: Rear cover kits contain two (2) covers, rear top and rear bottom, and are for one section only.

**Bus splice kits**

Description	Catalog number	List price
Bus splice kit for 2000 amp main bus	GBS2000	\$ 598
Bus splice kit for 2500 amp main bus	GBS2500	598
Bus splice kit for 3200 amp main bus	GBS3200	891
Bus splice kit for 4000 amp main bus	GBS4000	891
Bus splice kit for 5000 amp main bus	GBS5000	1,183
Bus splice kit for 6000 amp main bus	GBS6000	1,781
Bus splice kit for 8000 amp main bus	GBS8000	2,367
Bus splice kit for 10,000 amp main bus	GBS10000	2,965

Note: Bus splice kits are for one phase only. For example, 3P3W systems you need to order three (3) bus splice kits for every two sections that you are joining together, for 3P4W systems order four (4) per joint.

**Ground bus splice kits**

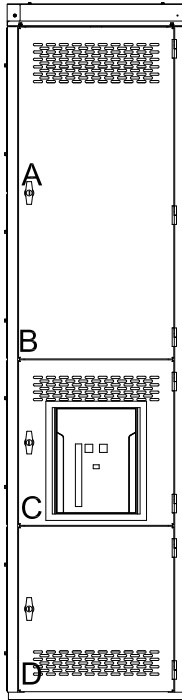
Description	Catalog number	List price
Ground bus splice kit	GGBSK	\$ 305
Dual ground bus splice kit	GGBSK-D	598

Note: 1. Ground bus splice kits are for one connection joint only.  
2. Dual ground bus splice kit (GGBSK-D) is required for main bus ratings of 5000 amps and greater.

# Layout

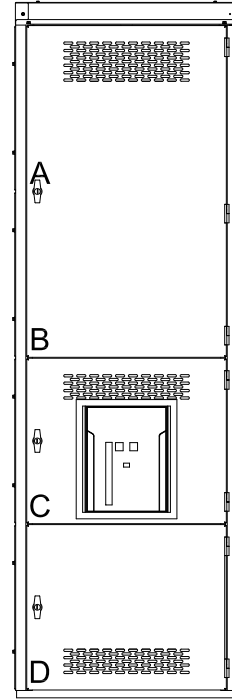
2000A - 2500A  
Main/tie section  
24" (610 mm)

E3 up to 2500A



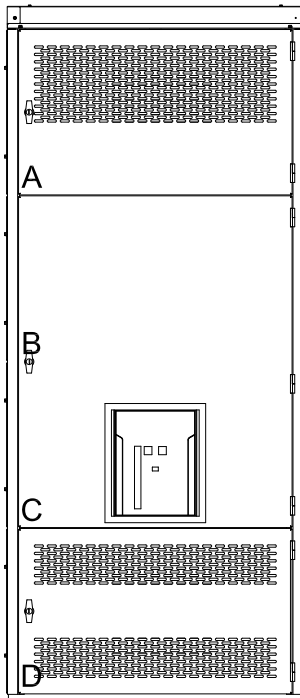
3000A - 3200A  
Main/tie section  
30" (762 mm)

E4 up to 3200A

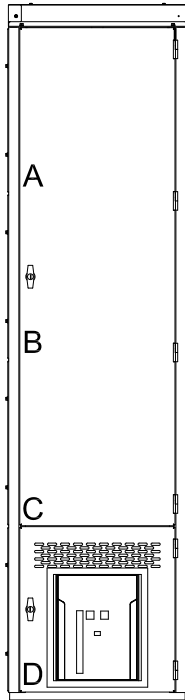


4000A - 5000A  
Main/tie section  
40" (1016 mm)

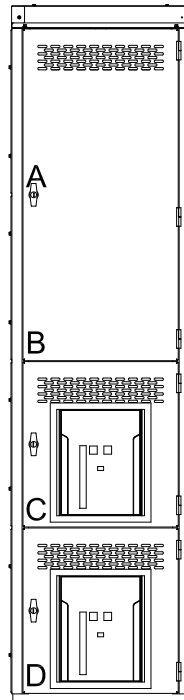
E6 up to 5000A



Feeder section  
24" (610mm)

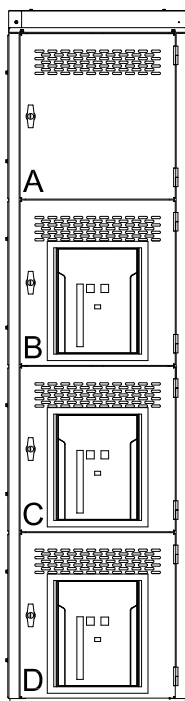


E3 up to 2000A



E3 up to 2000A

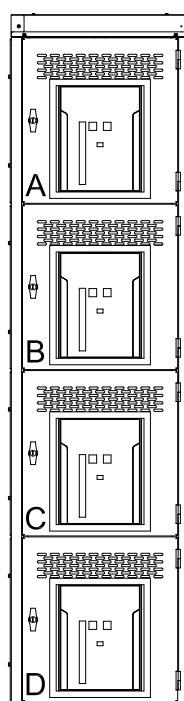
E3 up to 2000A



E3 up to 2000A

E3 up to 2000A

E3 up to 2000A



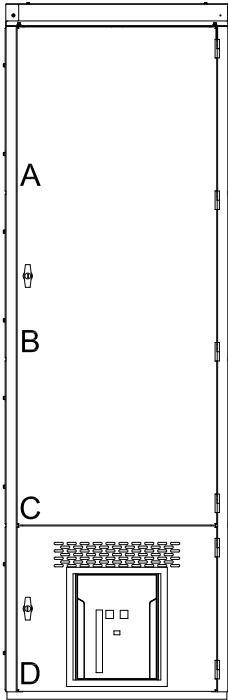
E3 up to 2000A

E3 up to 2000A

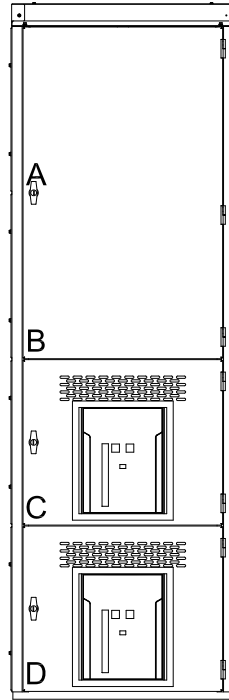
E3 up to 2000A

E3 up to 2000A

Feeder section  
30" (762 mm)

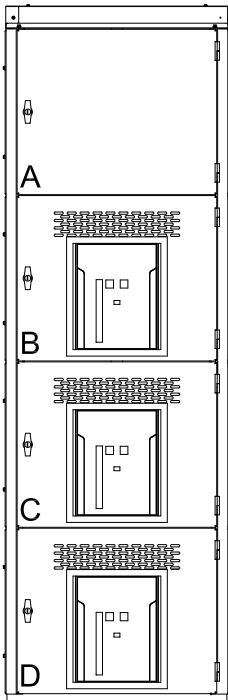


E3 up to 2000A



E3 up to 2000A

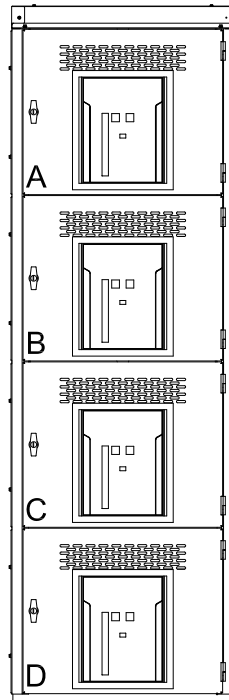
E3 up to 2000A



E3 up to 2000A

E3 up to 2000A

E3 up to 2000A



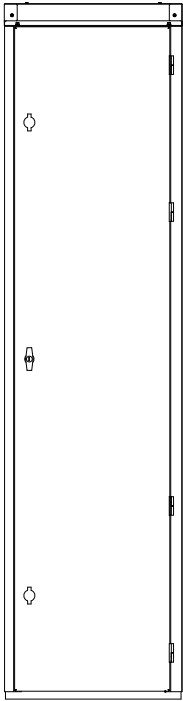
E3 up to 2000A

E3 up to 2000A

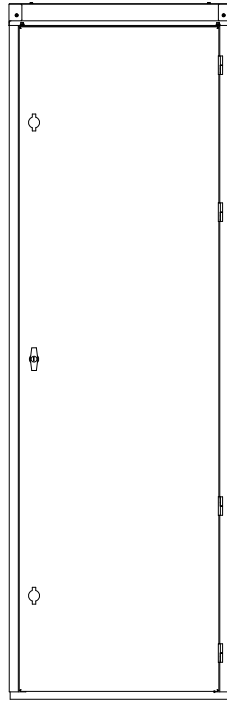
E3 up to 2000A

E3 up to 2000A

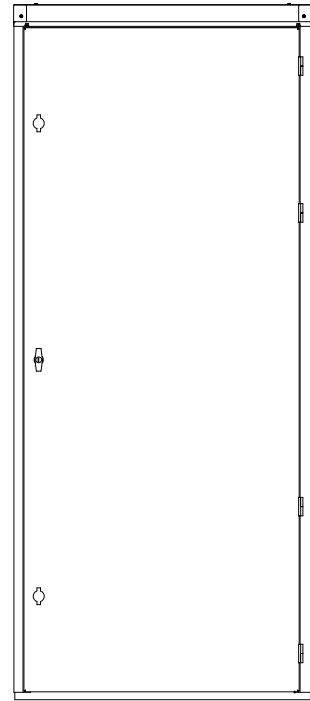
Auxiliary sections



24" (610 mm)

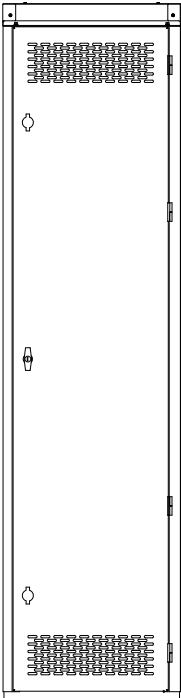


30" (762 mm)

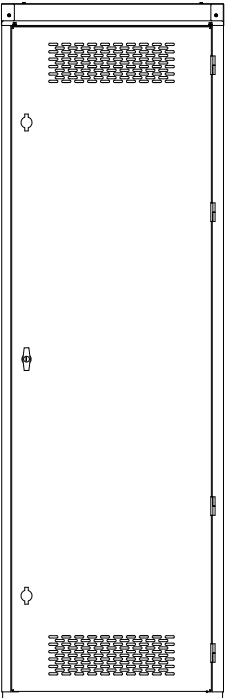


40" (1016 mm)

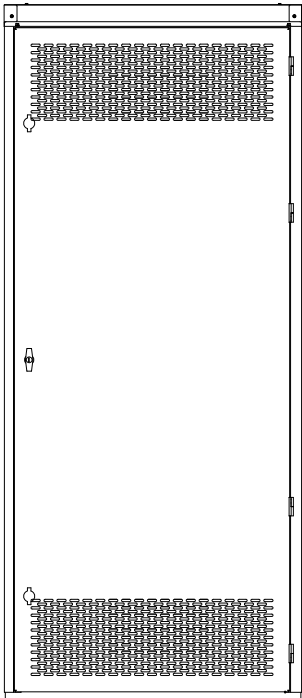
View of rear door for all sections



24" (610 mm)



30" (762 mm)



40" (1016 mm)

All sections can be equipped with a full height hinged rear door or 2 pc. rear screw covers, full height door is shown.

## Approximate weights

	Main Bus	24" Wide	30" Wide	40" Wide	
	Amps	84" Deep	84" Deep	84" Deep	
<b>Main Sections</b>	2000	1485	–	–	lbs.
	2500	1720	–	–	lbs.
	3200	1768	1779	–	lbs.
	4000	–	1897	–	lbs.
	5000	–	1957	2835	lbs.
	6000	–	2077	3022	lbs.
	8000	–	2197	3155	lbs.
	10000	–	2317	3315	lbs.

	Main Bus	24" Wide	30" Wide	40" Wide	
	Amps	84" Deep	84" Deep	84" Deep	
<b>Tie Sections</b>	2500	1867	–	–	lbs.
	3200	–	1997	–	lbs.
	4000	–	–	2344	lbs.
	5000	–	–	2915	lbs.

	Main Bus	24" Wide	30" Wide	40" Wide	
	Amps	2000A	3200A	4000A	
<b>Feeder Sections</b>	2000	1803	–	–	lbs.
	2500	1835	–	–	lbs.
	3200	1991	2134	–	lbs.
	4000	–	2134	2243	lbs.
	5000	–	2194	2303	lbs.
	6000	–	2314	2423	lbs.
	8000	–	2434	2543	lbs.
	10000	–	2554	2663	lbs.

	Main Bus	24" Wide	30" Wide	40" Wide	
	Amps	84" Deep	84" Deep	84" Deep	
<b>Auxiliary Sections</b>	NO BUS	1265	1353	1500	lbs.
	2000	1361	1473	1660	lbs.
	2500	1361	1473	1660	lbs.
	3200	1409	1533	1740	lbs.
	4000	1409	1533	1740	lbs.
	5000	1457	1593	1820	lbs.
	6000	1553	1713	1980	lbs.
	8000	1649	1833	2140	lbs.
	10000	1745	1953	2300	lbs.

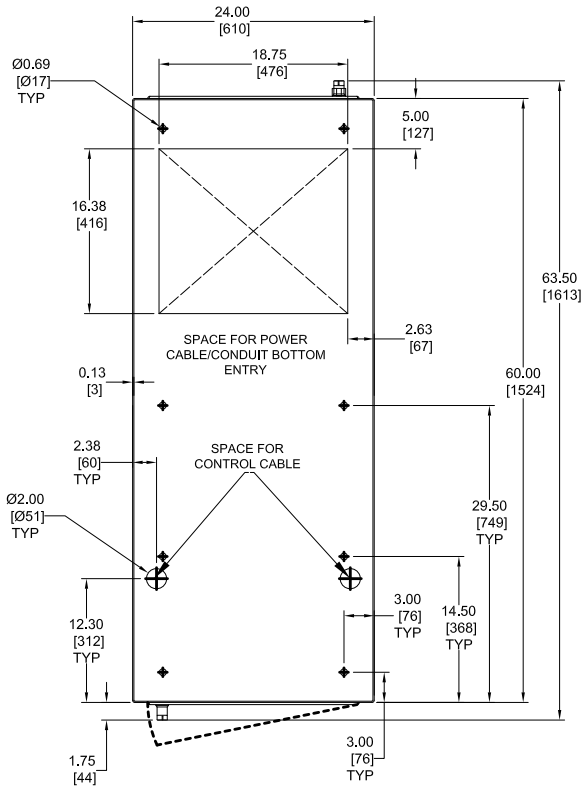
### Notes:

1. Weight of each section does not include moving part of each breaker.
2. Overhead lift device weight is approximately: 118 lbs, 54 kg
3. Weight for feeder sections is with 4-high 2000A breakers.

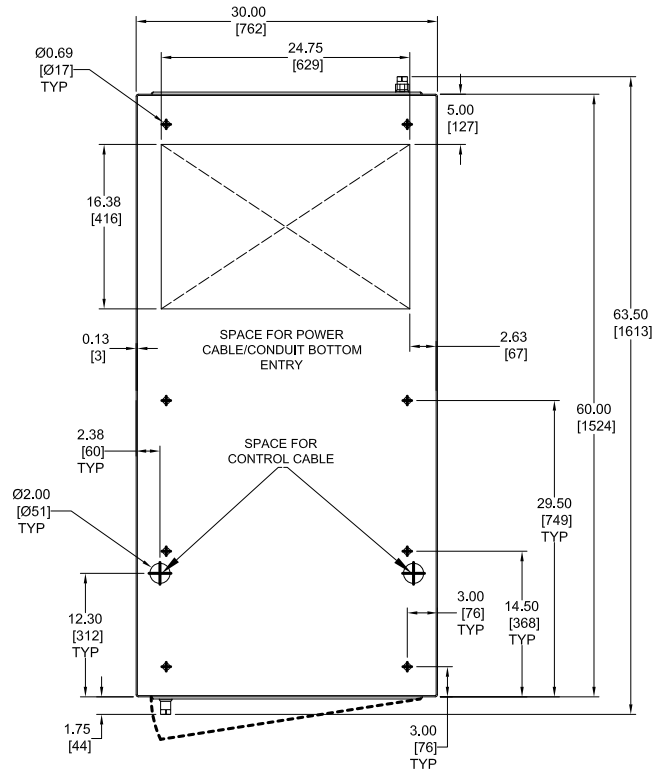
## Breaker weights

Breaker Frame Size	Weight (lbs)	Weight (kg)
E3	145	66
E4	214	97
E6	270	122

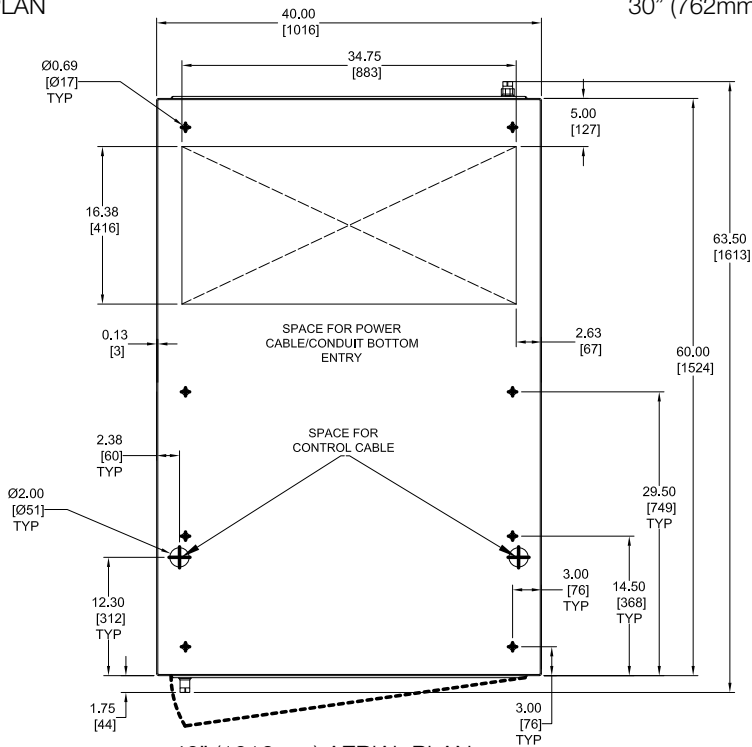
## Switchgear floor plans 60" (1524 mm) depth



24" (610mm) AERIAL PLAN



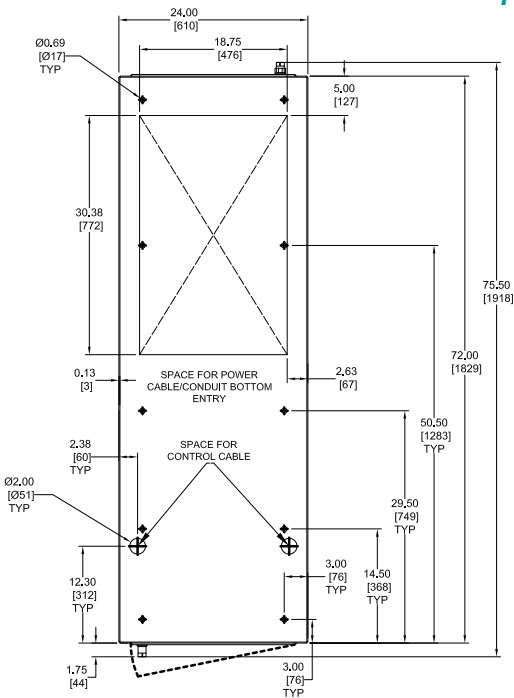
30" (762mm) AERIAL PLAN



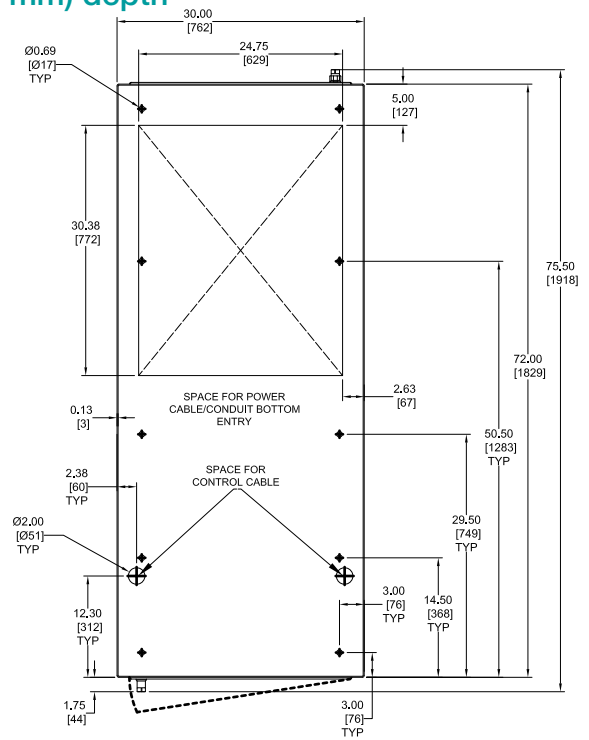
40" (1016mm) AERIAL PLAN



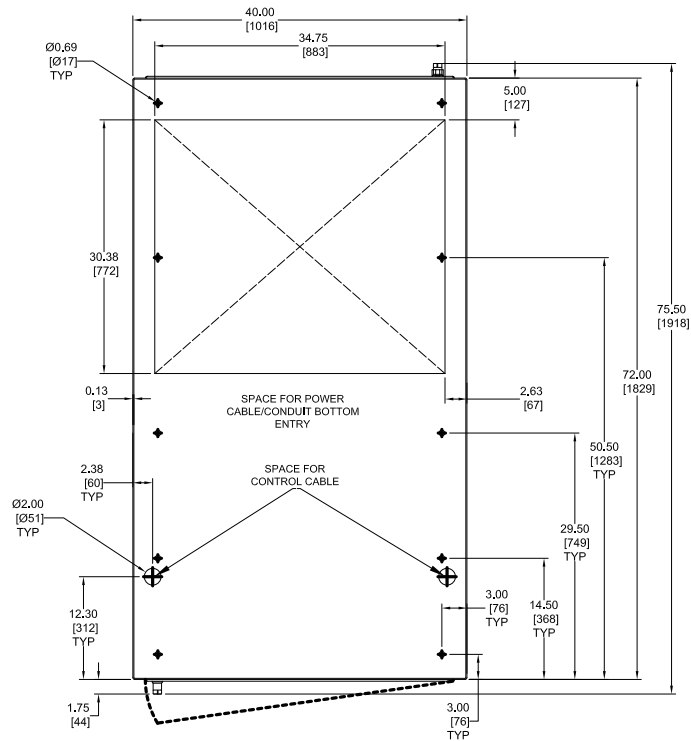
Switchgear floor plans  
72" (1829 mm) depth



24" (610mm) AERIAL PLAN

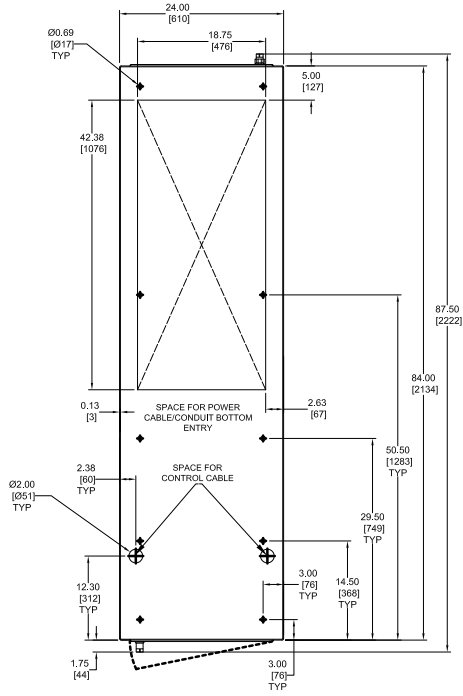


30" (762mm) AERIAL PLAN

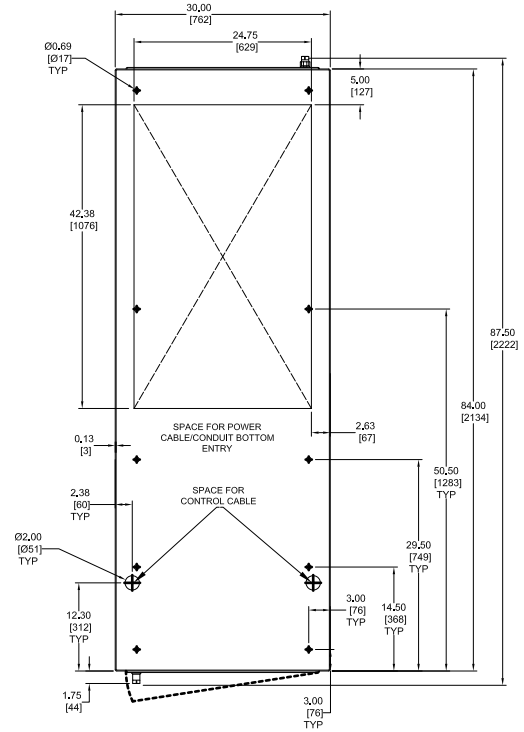


40" (1016mm) AERIAL PLAN

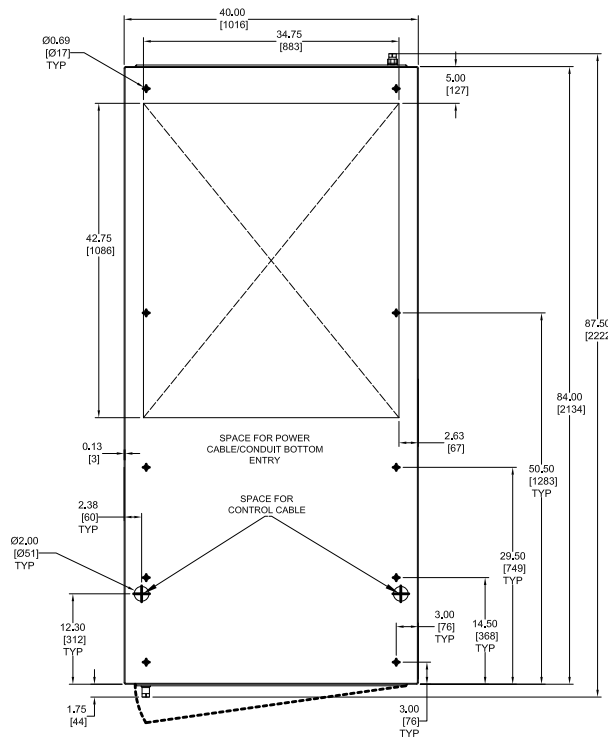
## Switchgear floor plans 84" (2134 mm) depth



24" (610mm) AERIAL PLAN



30" (762mm) AERIAL PLAN



40" (1016mm) AERIAL PLAN



# Contact us

**ABB Inc.**

Low Voltage Products  
16250 W. Glendale Drive  
New Berlin, WI 53151  
Technical Support & Customer Service  
Phone: 888-385-1221, Option 4  
Email: [lvps.support@us.abb.com](mailto:lvps.support@us.abb.com)  
Web: [www.abb.us/lowvoltage](http://www.abb.us/lowvoltage)  
[www.switchgearforum.com](http://www.switchgearforum.com)

**ABB Inc.**

Low Voltage Control Products & Systems  
2117 32 Avenue  
Lachine, Quebec, Canada H8T 3J1  
Phone: 800-567-0283 - Atlanta & Quebec  
866-222-8368 - Midwest & Pacific  
866-460-3300 - Ontario