

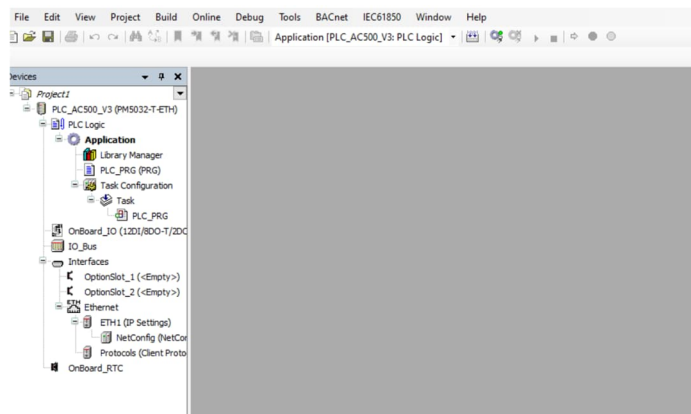
Presenting a Webpage from an Automation Builder Visualization Button.

Adding a push button link to the Automation Builder Visualization.

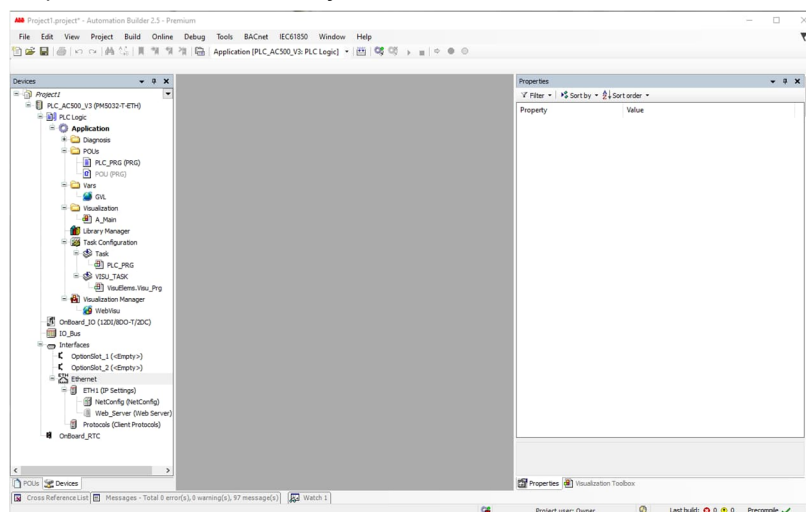
This document will discuss how to create a button that opens an external web URL from a visualization page.

Creating a button that opens an external website URL.

Step 1: Create a new project, select the proper PLC

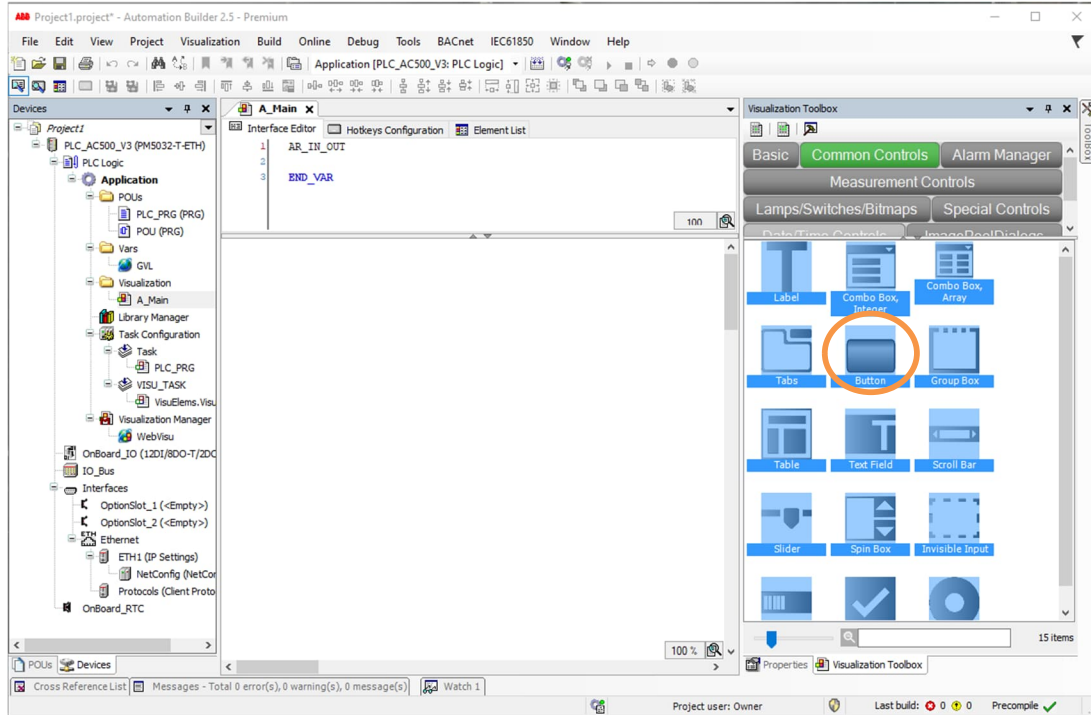


Step 2: Add a Visualization Object and add the Webserver to the Ethernet device in the Interfaces tree

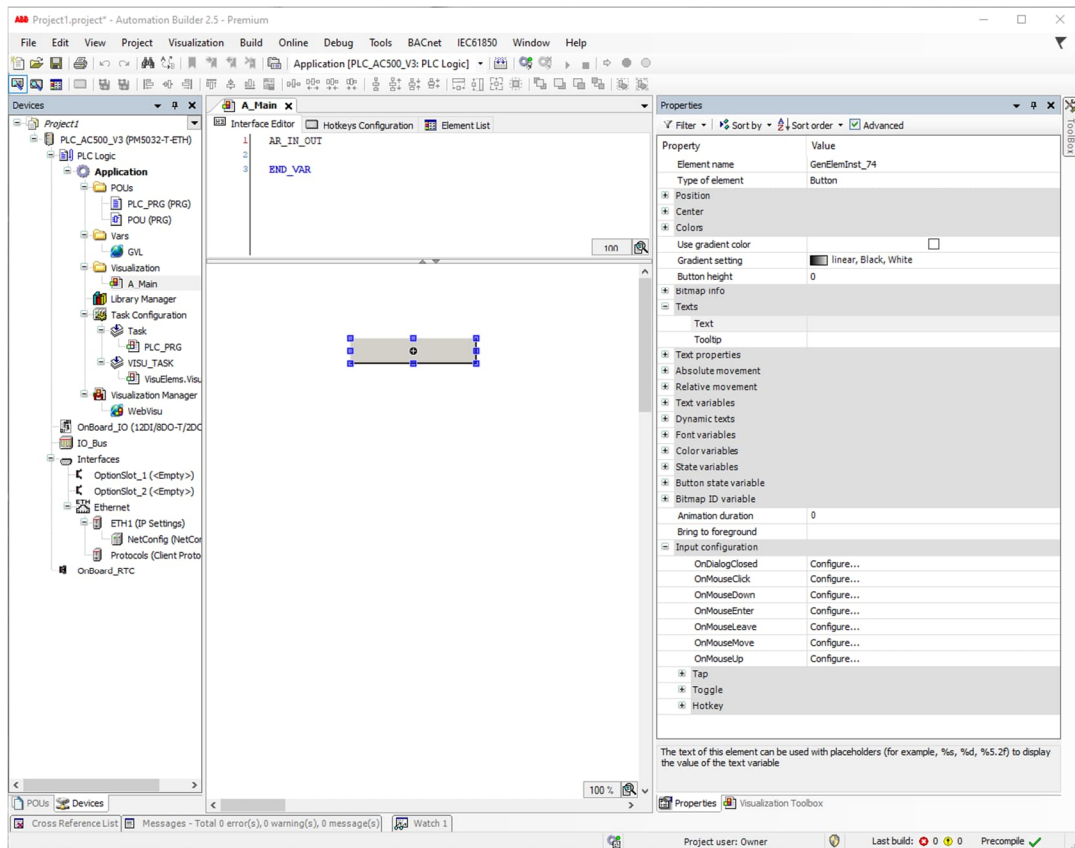


Step 3: From the Visualization Toolbox select Common Controls tab. In the Common Controls tab click and

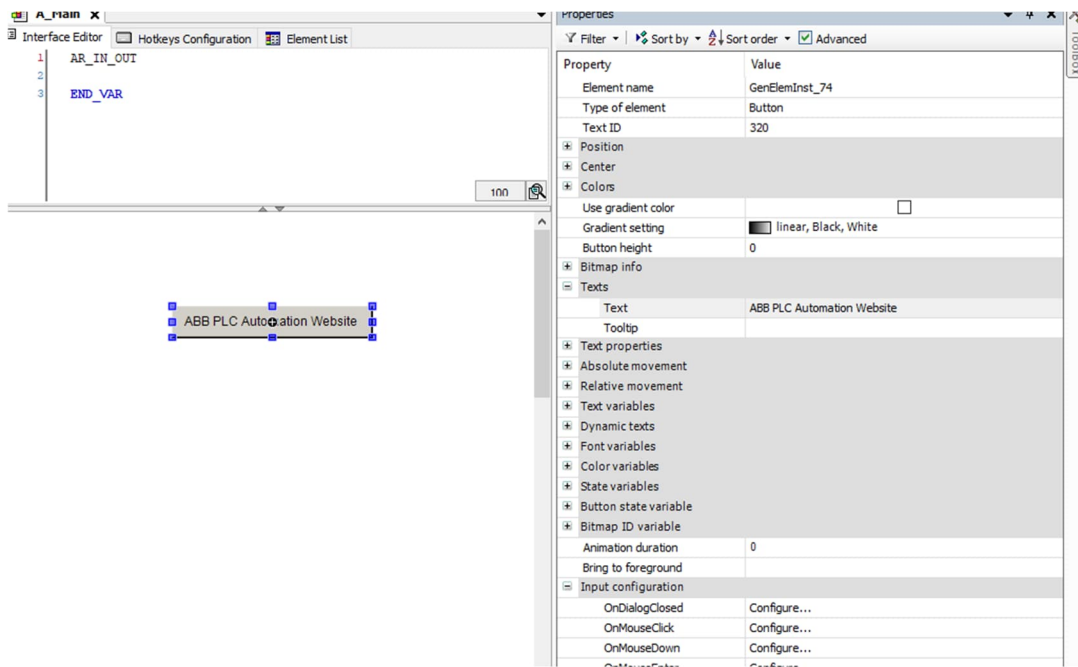
drag a Button Icon onto the Visualization page.



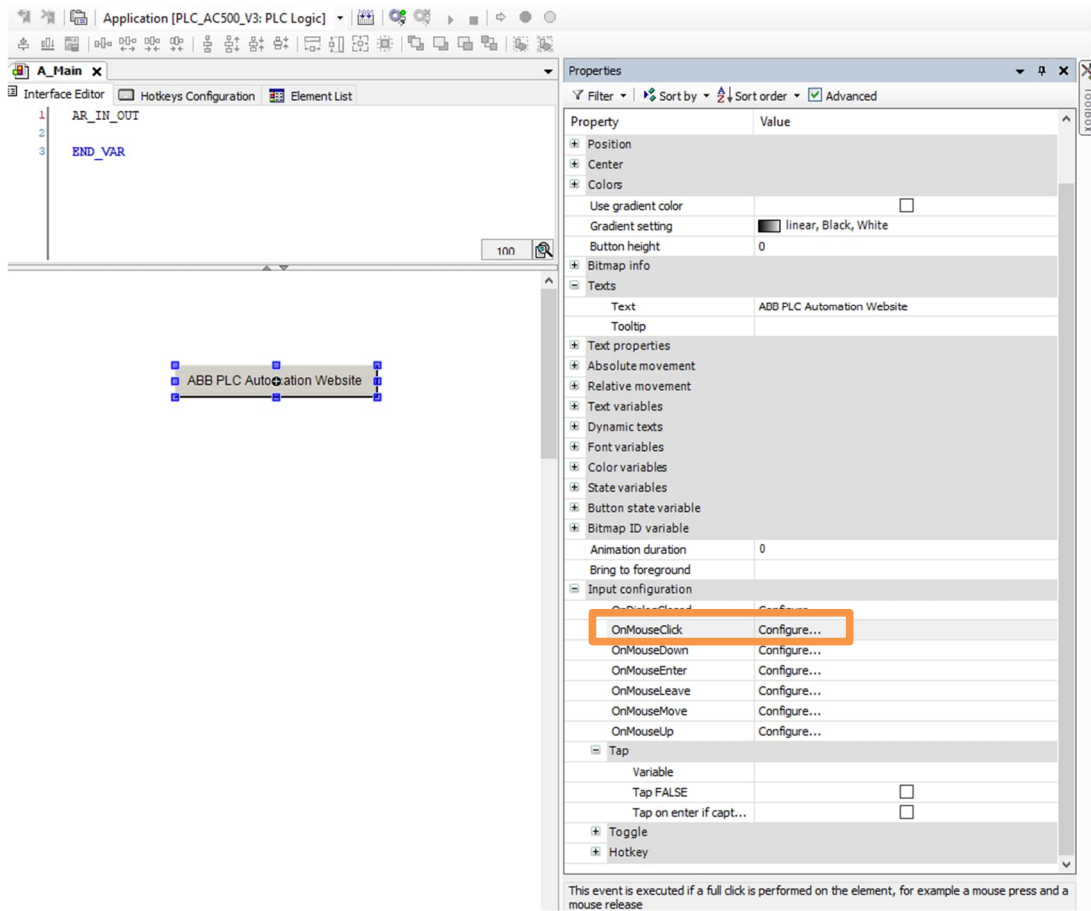
Step 4: With the Button selected, the Button's properties are available in the Properties tab.



Step 5: Under Texts, label the button.

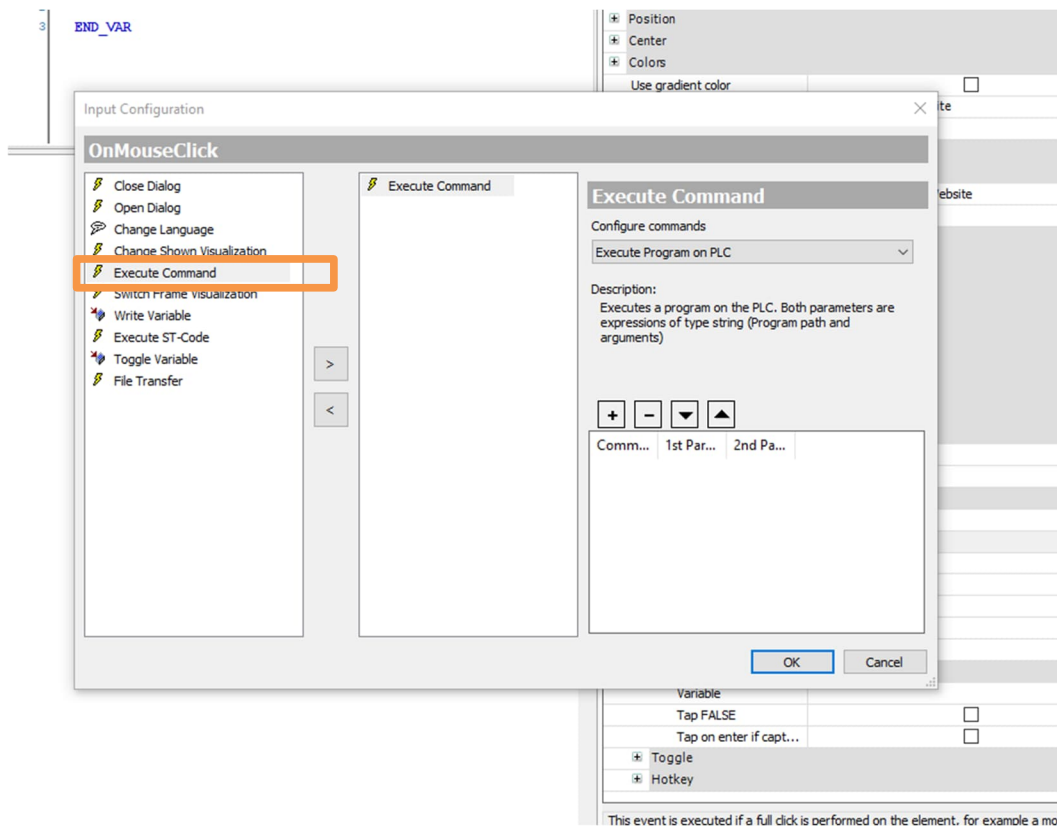


Step 6: Under Input configuration, click on the Configure... text next to OnMouseClicked

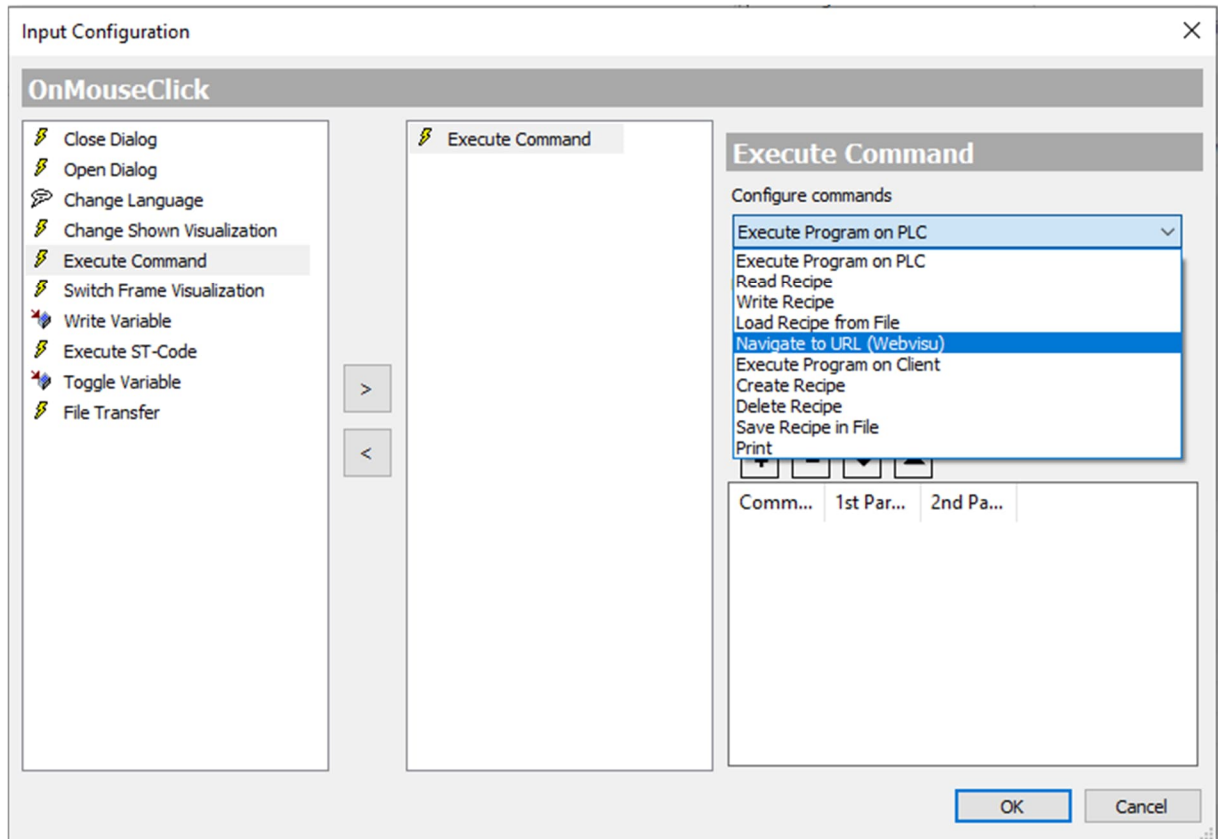


Step 7: This opens the Input Configuration window

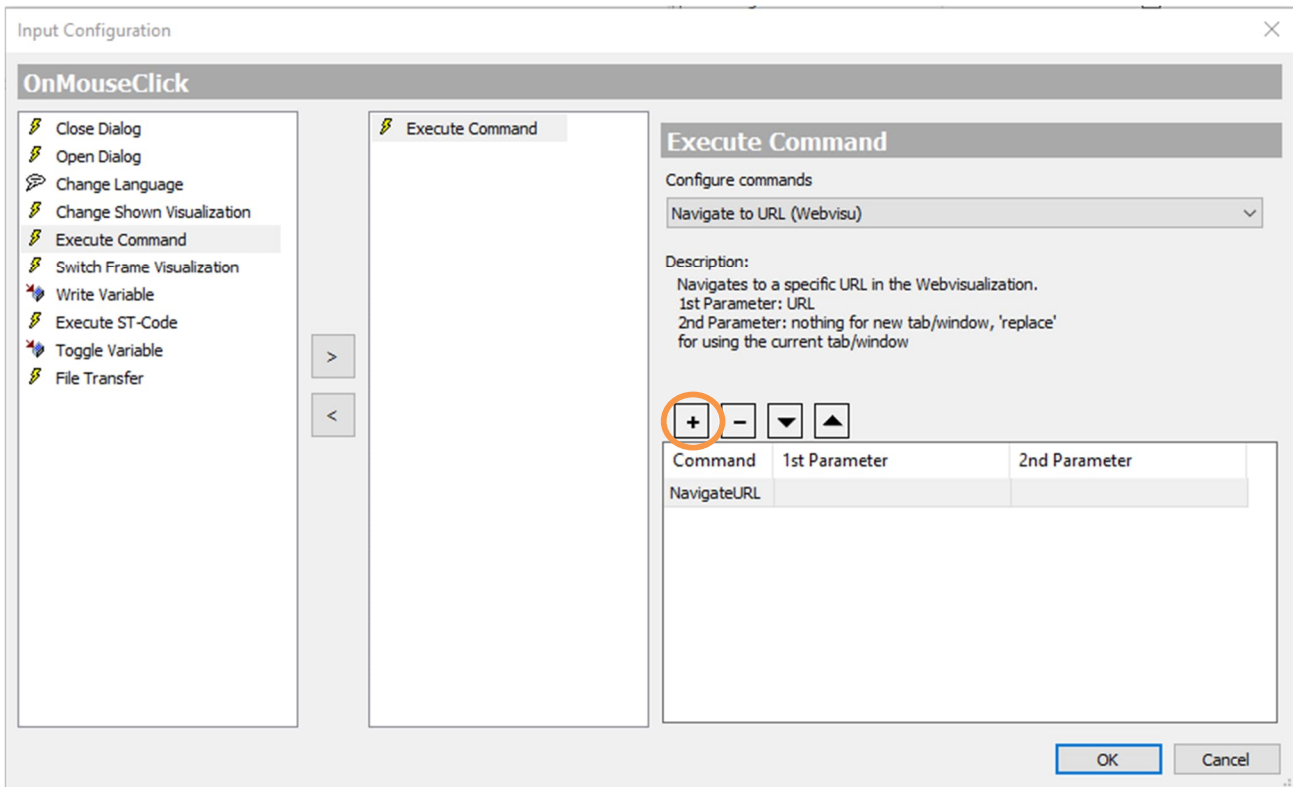
Step 8: From the Input Configuration window select Execute Command



Step 9: From the Configure commands dropdown select Navigate to URL (Webvisu)

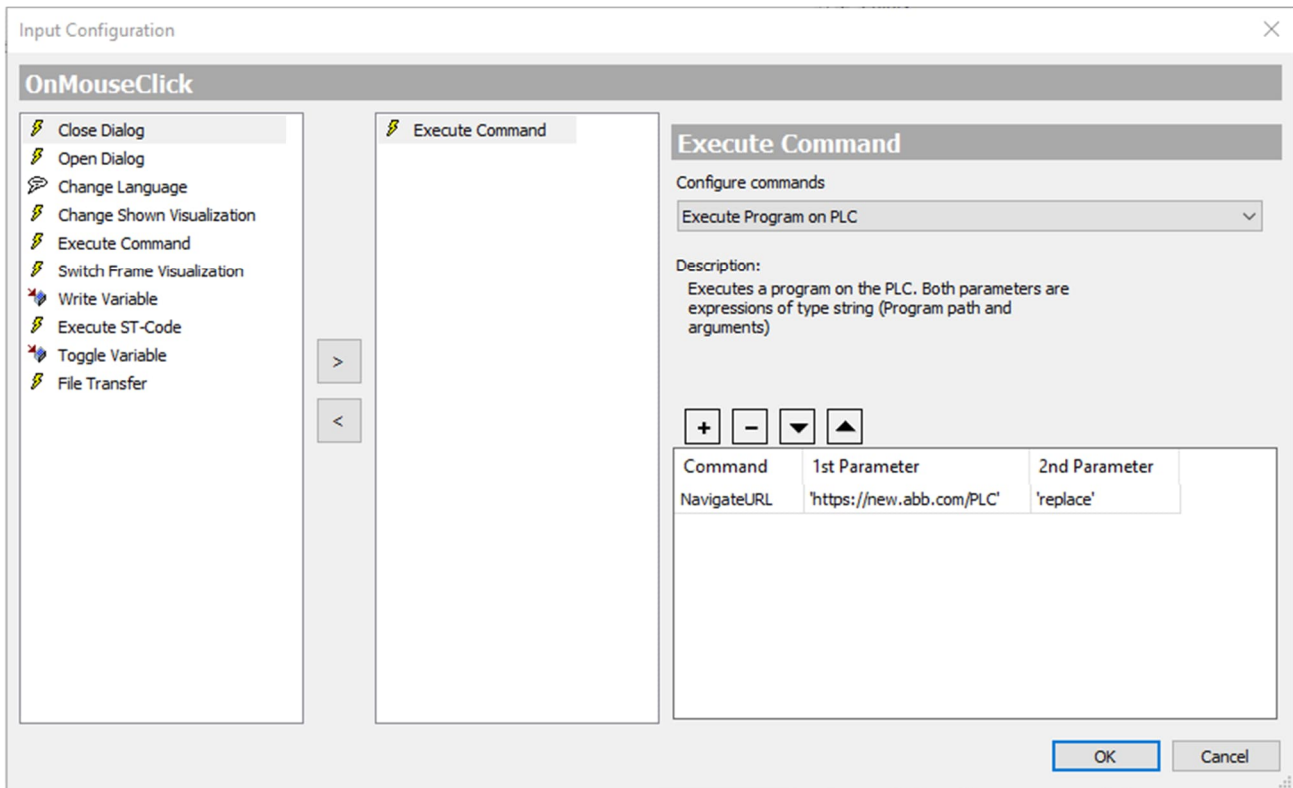


Step 10: Click on the + symbol to add a NavigateURL rung



Step 11: Put the requested URL into the 1st Parameter cell. The URL needs to have an apostrophe before and after the full address. Example: 'https://new.abb.com/PLC'

If you would like the URL to open into a new tab/window leave the 2nd Parameter blank. If you would like the URL to replace the tab/window you have the visualization open in put 'replace' in the 2nd Parameter cell (make sure to include the apostrophe before and after).



Step 12: Close the Input Configuration, Rebuild the code and download to the processor.

Step 13: Navigate to the processor's IP address in a web browser

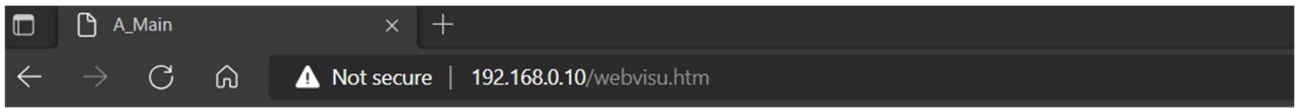


ABB PLC Automation Website

Step 14: Clicking on the button will open the programmed website. In this application we replace the existing tab/window.

