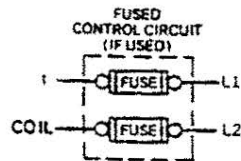
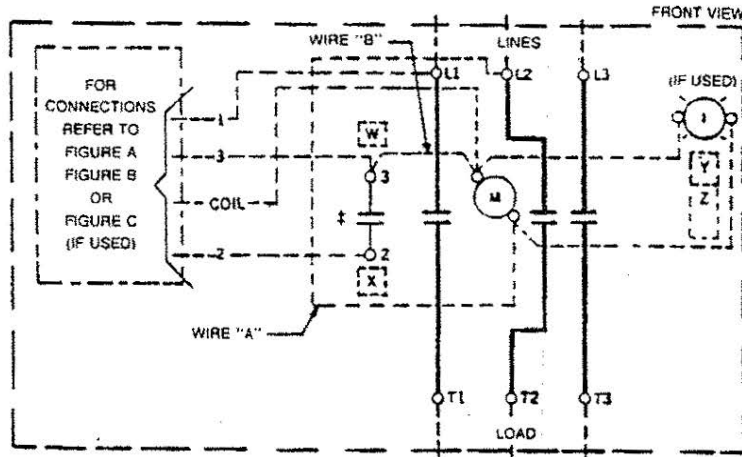
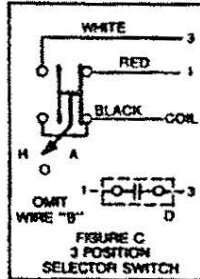
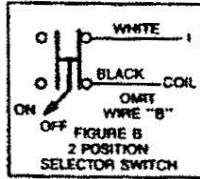
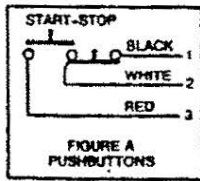


GEJ-6574 Information Label

# CR360L Lighting Contactor

30 Ampere



- M-LINE CONTACTOR
- I-INDICATING LIGHT
- D-MAINTAINING CONTACT PILOT DEVICE

Use 75°C. copper conductors only, for field wiring. Torque line and load terminals to 20 lb-in.

FOR SEPARATE CONTROL—Omit wire "A" and connect control source to coil and to 1 on control device.

**NOTE:** Refer to the National Electrical Code. Additional control circuit overcurrent protection may be required.

FOR 1-PHASE OPERATION—Change connection of wire "A" from L2 to L3. Connect lines to L1 and L3 and load to T1 and T3.

**COIL (Order 15D21G plus coil suffix number per table below)**

60 Hz	115-120V	200-208V	230-240V	—	460-480V	575-600V
50 Hz	110V	—	220V	380V	440V	550V
Coil Suffix	002	023	003	064	004	005

The following accessory kits may be installed on this device.

- |                      |                        |
|----------------------|------------------------|
| START-STOP PB        | CR305X120N             |
| OFF-ON PB            | CR305X120P             |
| OFF-ON Sel Sw        | CR305X130P             |
| H-O-A Sel Sw         | CR305X130N             |
| IND LIGHT            | CR305X150N             |
| AUX CONTACT          | CR305X100A, B, C, D, E |
| CONTROL CIRCUIT FUSE | CR305X141A, B, C, D    |
| For CSA-GND KIT      |                        |
| ½-IN CONDUIT         | 55-213403G001          |
| ¼-IN CONDUIT         | 55-213403G002          |

Final Suffix Letter Of CR Number	Contact Location, See Diagram			
	W	X	†Y	†Z
A (Or None)				
B	— —			
C		— —		
D	— —	— —		
E	— —			— —
F	— —	— —		
G	— —	— —		— —
H	— —	— —		— —
J	— —		— —	— —
†Z	No Holding interlock			

† Not available when Control Circuit Fuse Kit is used.

<b>PRINCIPAL RENEWAL PARTS</b>
4 Movable & 8 Sta Cont. . . . . 546A301G002

