

Types PPM and PPX Indoor or outdoor voltage transformers

Product features

- 600 volt indoor or outdoor
- 10 kV BIL
- 50 and 60 Hertz
- Primary volts: 40 - 600
- Secondary volts: 120 (other low voltage outputs available)

Application

Types PPM and PPX are designed for metering, relaying, and other control applications requiring accurate voltage transformation at burdens through 75 VA, 85% PF.

Core and coils

A high-low coil grouping is used. The high voltage coil is wound on an insulating tube, major high-low insulation is positioned, and the low voltage coil is wound directly over the high voltage coil. One leg of an octagonal core is fitted through the coil window. The core is banded to a support frame and the complete assembly is molded in thermoplastic rubber.

Insulation

Thermoplastic rubber insulating material is permanently molded to the core and coil assembly, resulting in a compact unit with excellent mechanical, thermal, and dielectric characteristics.

Terminals

Primary and secondary terminals are compression-type and are sized for #14 through #3 wire. The location of the HV (H1 - H2) and LV (X1 - X2) terminals is clearly identified by lettering that is molded into the transformer. Clear, sealable terminal covers are supplied as standard.

Base

The base is constructed of corrosion-resistant aluminum and is secured to the encapsulated base support by four symmetrically located screws.

Test reports

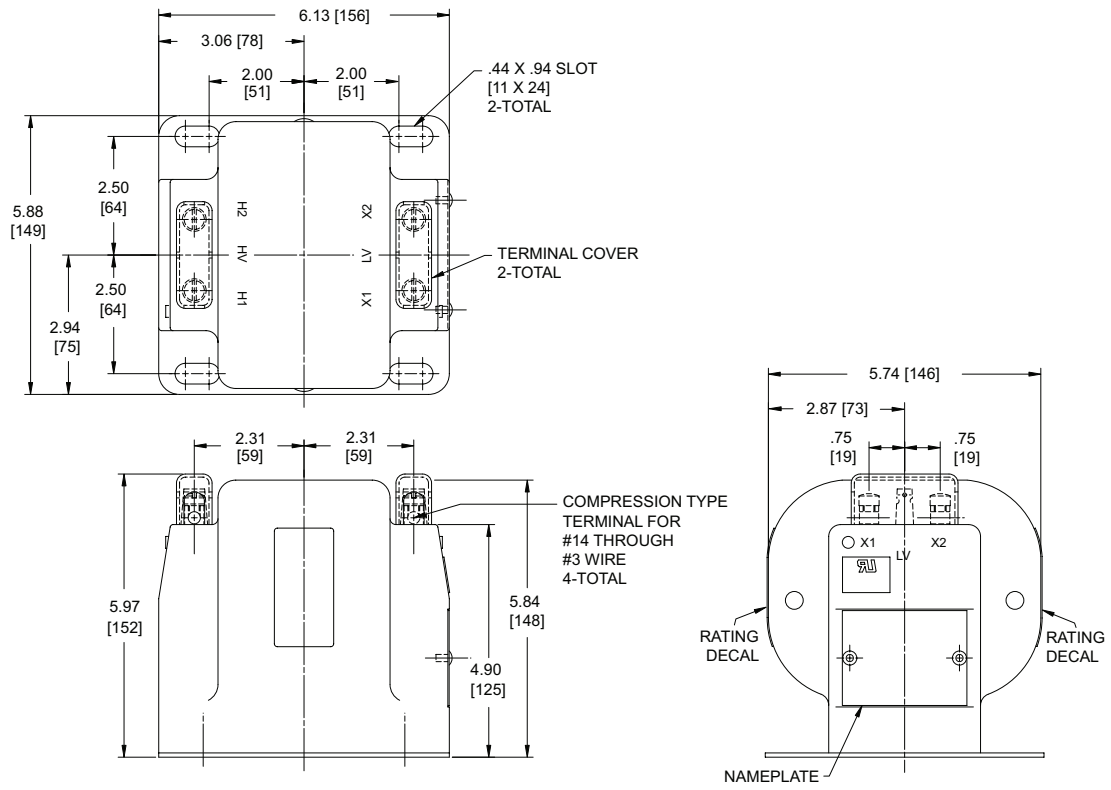
Test reports are stored electronically and can be e-mailed in various formats at the time of shipment.

Standards

These units can be tested to all applicable IEEE, CSA, or IEC standards as requested.



Unit dimensions



Types PPM/PPX

Note: metric dimensions displayed in [mm]

[Selection guide](#)

| Primary volts | Winding ratio | IEEE metering accuracy | Thermal rating | | Frequency | Style number |
|-----------------|---------------|---------------------------|----------------|--------|-----------|--------------|
| | | | 30°C | 55°C | | |
| Type PPM | | | | | | |
| 240/416Y | 2:1 | 0.3Y | 500 VA | 350 VA | 60 | 7526A10G01 |
| 288/500Y | 2.4:1 | 0.3Y | 500 VA | 350 VA | 60 | 7526A10G02 |
| 300/520Y | 2.5:1 | 0.3Y | 500 VA | 350 VA | 60 | 7526A10G03 |
| 480/480Y | 4:1 | 0.3Y | 500 VA | 350 VA | 60 | 7526A10G04 |
| 600/600Y | 5:1 | 0.3Y | 500 VA | 350 VA | 60 | 7526A10G05 |
| 120/208Y | 1:1 | 0.3Y | 500 VA | 350 VA | 60 | 7526A10G06 |
| Type PPX | | | | | | |
| 40/70Y | 0.3333:1 | 0.3W, 0.6X | 500 VA | 350 VA | 60 | 7525A16G06 |
| 48/83Y | 0.4:1 | 0.3W, 0.6X, 1.2Y | 500 VA | 350 VA | 60 | 7525A16G07 |
| 60/104Y + | 0.5:1 | 0.6Y | 500 VA | 350 VA | 50/60 | 7525A16G10 |
| 69.3/120Y | 0.578:1 | 0.3W, 0.6Y | 500 VA | 350 VA | 60 | 7525A16G03 |
| 120/208Y + | 1:1 | 0.6Y | 500 VA | 350 VA | 50/60 | 7525A16G01 |
| 120/208Y* + | 1.7143:1 | 0.3X | 500 VA | 350 VA | 50/60 | 7525A16G05 |
| 207.8/360Y | 1.7317:1 | 0.3Y | 500 VA | 350 VA | 60 | 7525A16G09 |
| 346/600Y | 2.8833:1 | 0.3Y | 500 VA | 350 VA | 60 | 7525A16G08 |
| 400/400Y + | 3.33:1 | 0.3W, 0.6X | 500 VA | 350 VA | 50/60 | 7525A16G04 |

Approximate weight is 19 lbs.

* 70 V secondary

+ Thermal rating: 350 VA @ 30° C ambient

Additional styles available upon request. Contact your ABB sales representative or call +1-252-827-3212 for more information.

For more information please contact:

ABB Inc.
Medium Voltage Distribution Components

3022 NC 43 North
Pinetops, NC 27864
USA

Phone: +1 252 827 3212

Fax: +1 252 827 4286

www.abb.com/mediumvoltage

Note:

The information contained in this document is for general information purposes only. While ABB strives to keep the information up to date and correct, it makes no representations or warranties of any kind, express or implied, about the completeness, accuracy, reliability, suitability, or availability with respect to the information, products, services, or related graphics contained in the document for any purpose. Any reliance placed on such information is therefore strictly at your own risk. ABB reserves the right to discontinue any product or service at any time.

Copyright 2004 ABB.

All rights reserved.



UL Recognized Component, File No. E96461