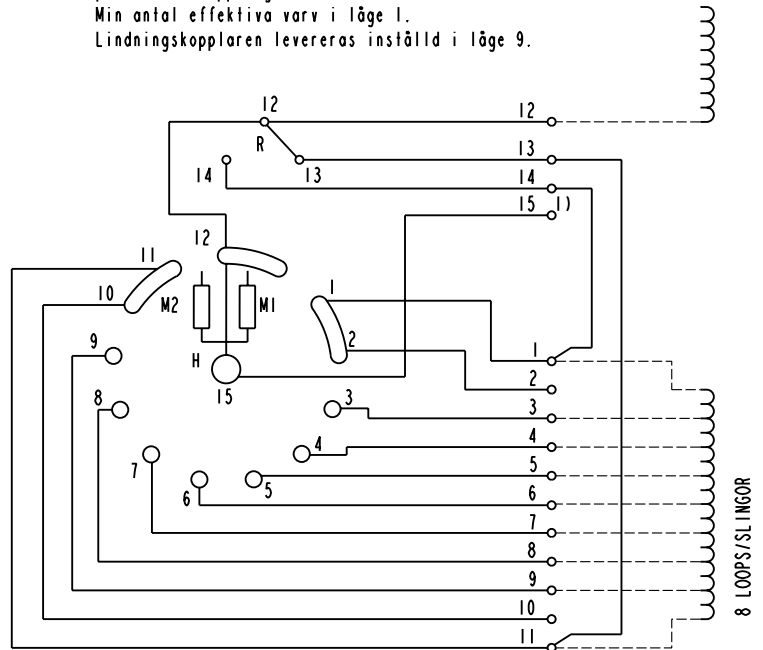


We reserve all rights in this document and in the information contained therein. Reproduction, use or disclosure to third parties without express authority is strictly forbidden. © ABB 19

Pos. Läge	R connects förbinder	H connects förbinder
1	12-13	2-15
2		3-15
3		4-15
4		5-15
5		6-15
6		7-15
7		8-15
8		9-15
9A		10-15
9B	11-15	
9	12-14	12-15
9C		1-15
9D		2-15
9E		3-15
10		4-15
11		5-15
12		6-15
13		7-15
14		8-15
15	9-15	
16	10-15	
17		10-15

On-load tap-changer type UZER., UZFR., 17 tap positions, plus/minus switching.
Min effective No. of turns in pos. 1.
The tap-changer is delivered set in pos. 9.

Lindningskopplare typ UZER., UZFR., 17 lägen, plus/minus-koppling.
Min antal effektiva varv i läge 1.
Lindningskopplaren levereras inställd i läge 9.



A position with letter is a through position and gives the same voltage as the normal position.

Läge med bokstav är ett genomloppsläge och ger samma spänning som normalläget.

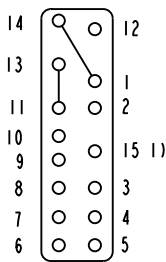
The tap-changer is shown in pos. 9
Lindningskopplaren visad i läge 9

- R Change-over selector
Plus/minus-omkopplare
- H Main contact
Huvudkontakt
- M1, M2 Transition contacts
Motståndskontakter

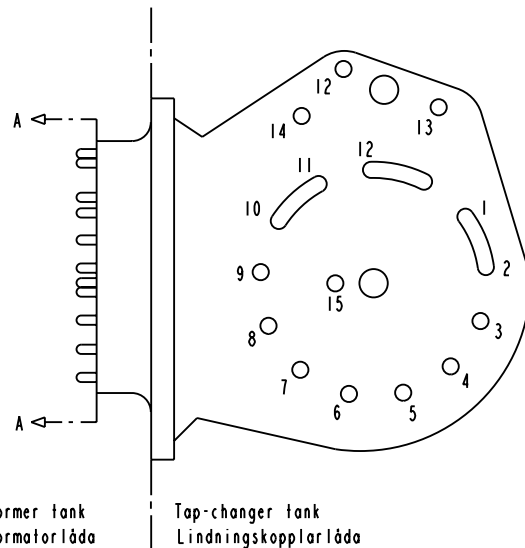
1) Connections between the terminals 15 of the three phases are included in the star-point type.

Förbindningar mellan uttag 15 i de tre faserna ingår i nollpunktsutförandet.

Terminal board
Plint



Section A-A
Sektion A-A



Sheet	Cont
	Year Week
Form No.	Dept
	Year Week
Design checked by	Rev In
	Revision
Design checked by	Appd
	Year Week
Design checked by	Accepted for prod by
	Appd
Design checked by	Year Week
	Year Week
Design checked by	Year Week
	Year Week

Rev In	Revision	Appd	Year	Week	
Accepted for qual control R. Yngvesson		Accepted for prod by		Description (English) CONNECTION DIAGRAM	
Design checked by B-O. Stenestam		Drawn by L. Bergman		Description (own language) KOPPLINGSSHEMA	
Drawing checked by M. Hedlund		Issued by Dept COM/TKO 97 33		File name 0397-5	
Asea Brown Boveri		5492 0397-5		Lang	Sheet
				Rev In	Cont