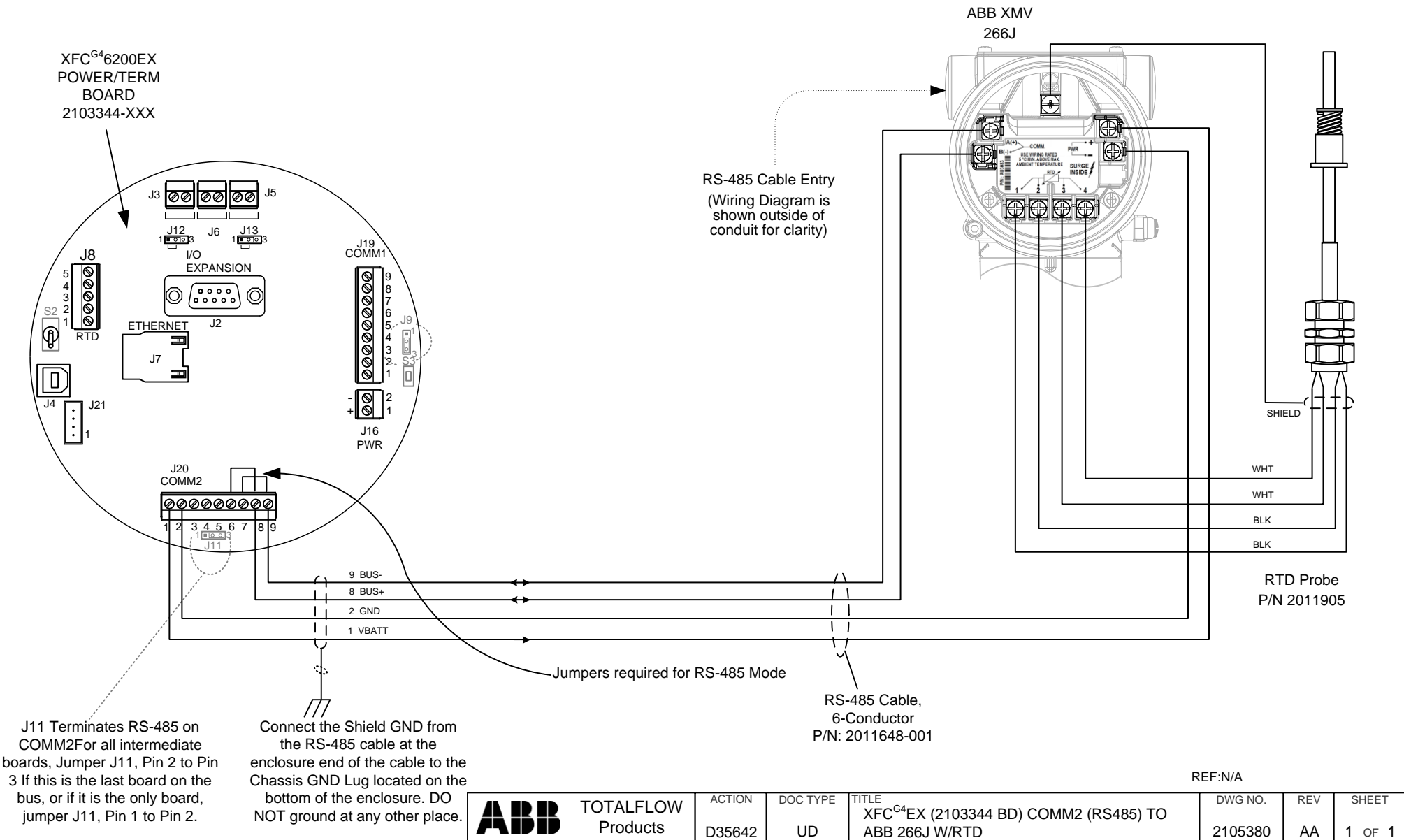


NOTES:

1. **WARNING:** This drawing does not illustrate the installation methods required for hazardous locations. Prior to any installation in a Classified Hazardous Location, verify installation methods by the Control Drawing referenced on the product's name tag and national and local codes.
2. To access the XMV termination board, remove the enclosure rear cover.
3. Maximum accumulated length for the RS-485 buss is 4000 feet.



J11 Terminates RS-485 on COMM2 For all intermediate boards, Jumper J11, Pin 2 to Pin 3 If this is the last board on the bus, or if it is the only board, jumper J11, Pin 1 to Pin 2.

Connect the Shield GND from the RS-485 cable at the enclosure end of the cable to the Chassis GND Lug located on the bottom of the enclosure. DO NOT ground at any other place.

Jumpers required for RS-485 Mode

RS-485 Cable, 6-Conductor P/N: 2011648-001

REF: N/A

ABB TOTALFLOW Products	ACTION	DOC TYPE	TITLE	DWG NO.	REV	SHEET
	D35642	UD	XFC ^{G4} EX (2103344 BD) COMM2 (RS485) TO ABB 266J W/RTD	2105380	AA	1 OF 1