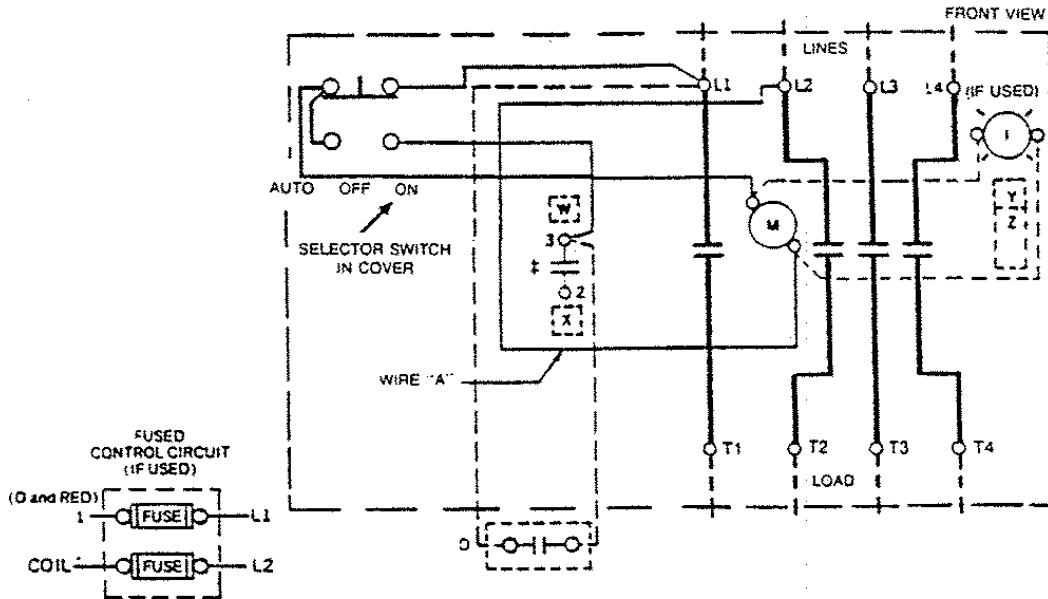


# GEJ-7208 Information Label

## CR360L Lighting Contactor

### 30 Ampere-With Selector Switch



M--LINE CONTACTOR

I--INDICATING LIGHT

D--MAINTAINING CONTACT PILOT DEVICE

Use 75°C. copper conductors only, for field wiring. Torque line and load terminals to 20 lb-in.

**FOR SEPARATE CONTROL--Remove wire "A".** Disconnect wire from selector switch at L1. Connect separate control source to coil and wire from selector switch. Connect external maintaining contact pilot device to #3 on contactor and wire from selector switch.

**NOTE:** Refer to the National Electrical Code. Additional control circuit overcurrent protection may be required.

**3-PHASE RATINGS APPLY TO 2-PHASE FORMS.**

Wire "A" has been omitted at factory on all forms having a coil voltage of 120 volts or less.

**COIL (Order 15D21G plus coil suffix number per table below)**

60 Hz	115-120V	200-208V	230-240V	—	460-480V	575-600V
50 Hz	110V	—	220V	380V	440V	550V
Coil Suffix	002	023	003	064	004	005

The following accessory kits may be installed on this device.

AUX CONTACT	CR305X100A, B, C, D, E
CONTROL CIRCUIT FUSE	CR305X141A, B, C, D
For CSA-GND KIT	
½-IN CONDUIT	55-213403G001
¾-IN CONDUIT	55-213403G002

Final Suffix Letter Of CR Number	Contact Location, See Diagram			
	W	X	†Y	†Z
A (Or None)				
B				
C		≠		
D		≠		
E				
F	≠	≠		
G		≠		
H	≠	≠		
J				
†Z	No Holding Interlock			

† Not available when Control Circuit Fuse Kit is used.

<b>PRINCIPAL RENEWAL PARTS</b>
4 Movable & 8 Sta Cont. .... 546A301G002

