

14

13

12

11

D

D

C

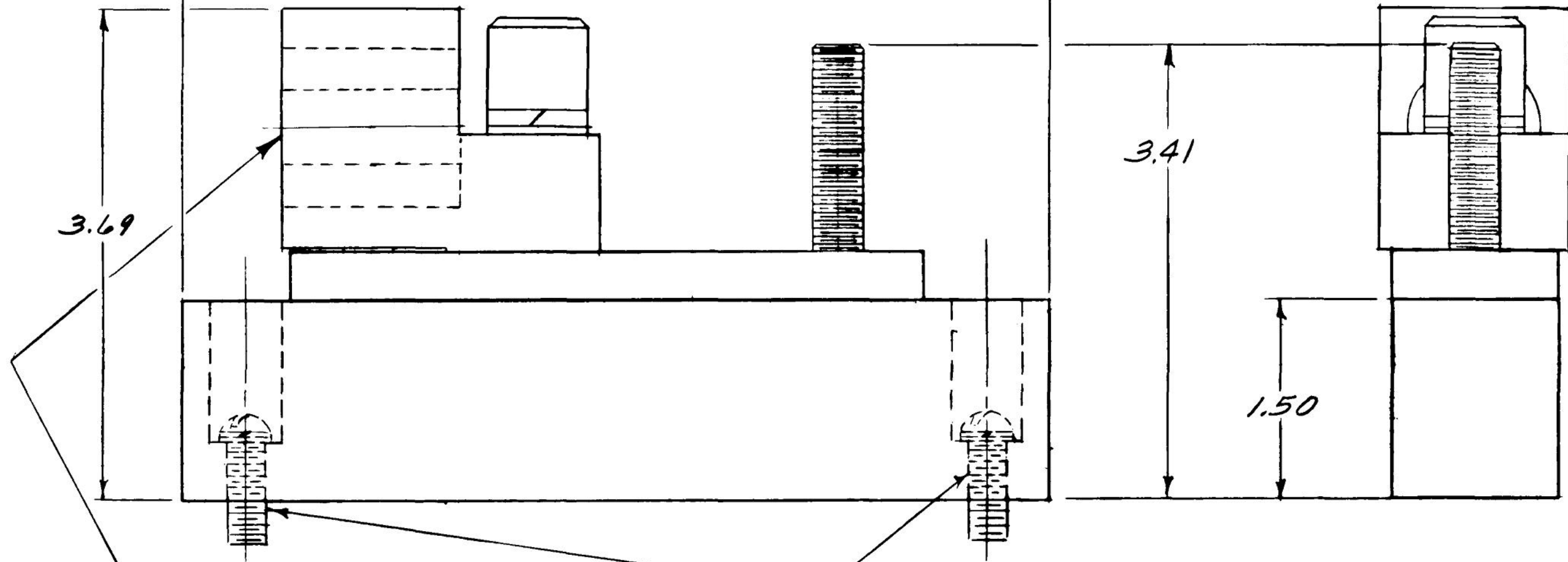
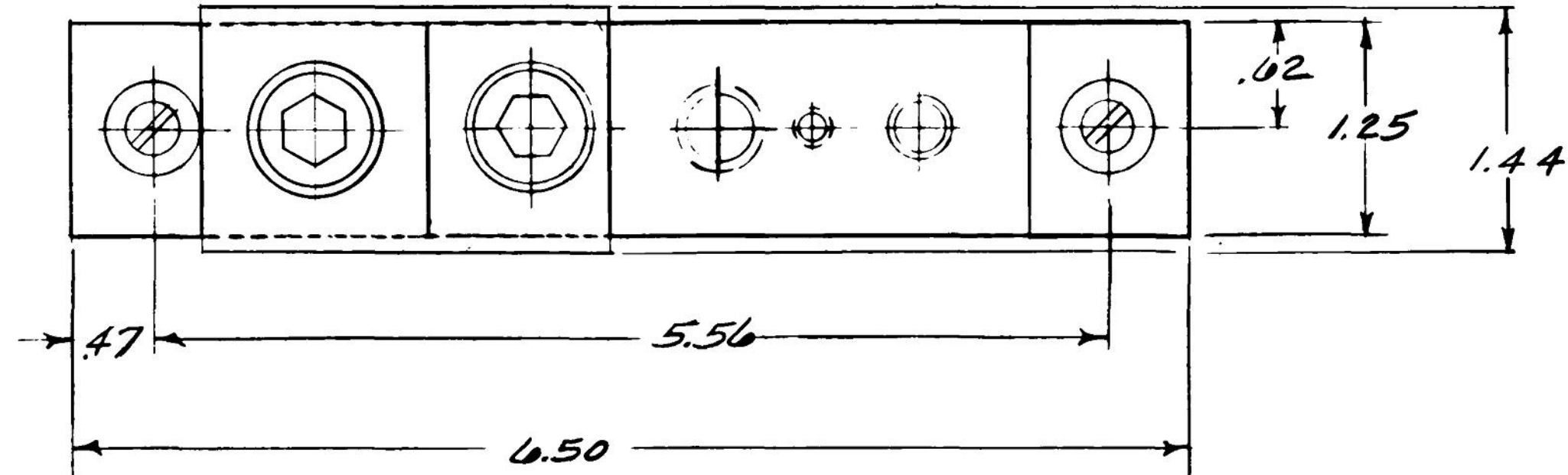
C

B

B

A

A



WIRE SIZE: (2) 1/0-250MCM CU-AL  
(1) 4-600MCM CU-AL

MOUNTING HARDWARE  
(2) #12-24 X .75 LG SCREWS  
(2) #12 BLOCK WASHERS  
(2) #12 FLAT WASHERS

	<b>Industrial Solutions</b>			
	<b>OUTLINE NEUTRAL</b> <b>FIRST MADE FOR TNIA400VG MOD 8</b>			
THIRD ANGLE 	SHEET 1 1 of 1	DWG NO. <b>139C5486SH1</b>	DATE <b>05/20</b>	REV <b>4</b>

14

13

12

11