

Product change notification

Declaration of improved InLine II product range

The side connected Z-busbar variants for InLine II have been technically improved. The old and new models differ in dimensions, reducing the footprint of the product significantly. The new variants are made to fit ideally in Nordicab cable distribution cabinets whereas the former range was optimized for MJS CDC's.



Figure 2: MJS cabinet

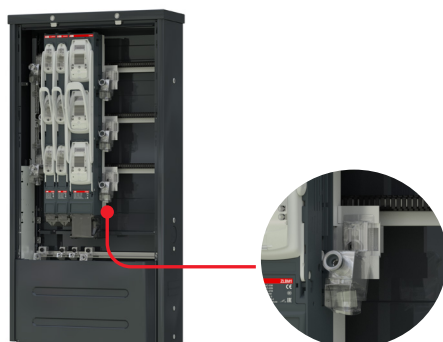
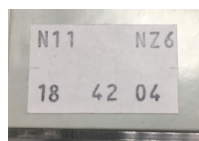


Figure 1: Nordicab

The InLine II switches equipped with new side connectors are being delivered since 1st of May 2020.

Differentiating improved and former versions: See the added manufacturing date label on the product, similar to picture below (year/week/day).

The new products are available from 20 18 05.



The affected products, dimensional and appearance changes can be found in the tables and drawings below.

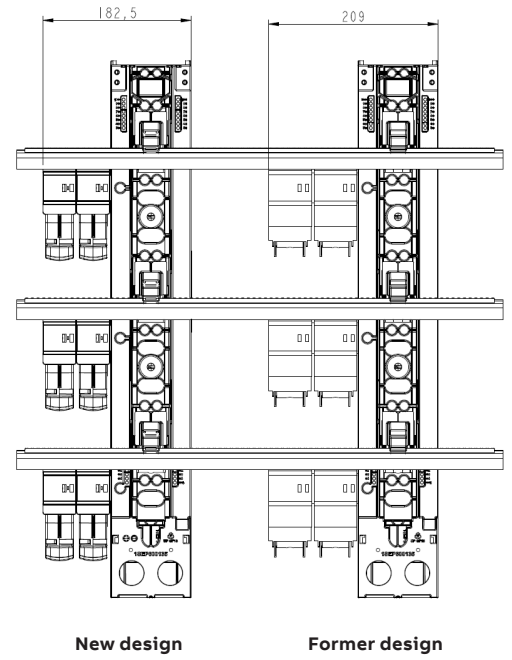
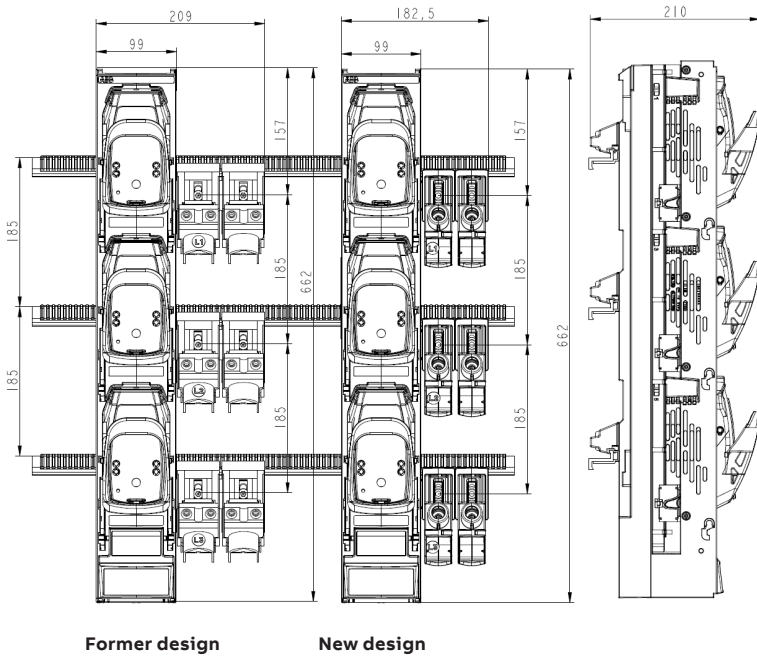
Coding and designation did not change.

	Code	Designation
1	1SEP620012R1130	ZLBM2-1P-Z-SC
2	1SEP620011R3130	ZLBM1-3P-Z-SC
3	1SEP620012R3130	ZLBM2-3P-Z-SC
4	1SEP620012R3140	ZLBM2-3P-Z-2SC
5	1SEP620013R3130	ZLBM3-3P-Z-SC
6	1SEP620013R3140	ZLBM3-3P-Z-2SC
7	1SEP620013R1140	ZLBM3-1P-Z-2SC
8	1SEP620012R1140	ZLBM2-1P-Z-2SC
9	1SEP620013R1130	ZLBM3-1P-Z-SC
10	1SEP620011R1140	ZLBM1-1P-Z-2SC
11	1SEP620011R1130	ZLBM1-1P-Z-SC
12	1SEP620011R3140	ZLBM1-3P-Z-2SC

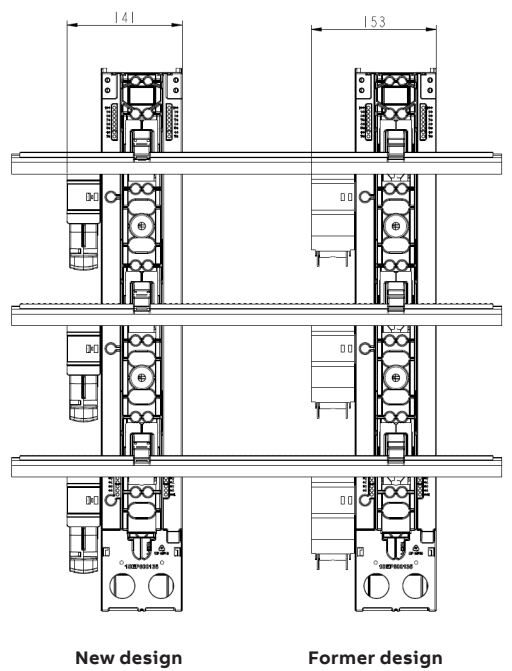
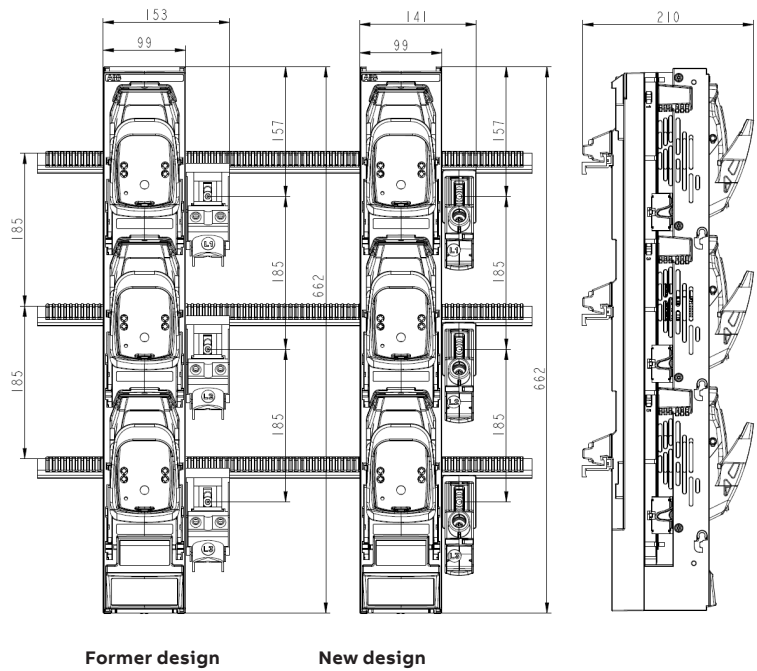


Dimensional changes for 1 pole variants of sizes ZLBM123-2SC

Two side connector

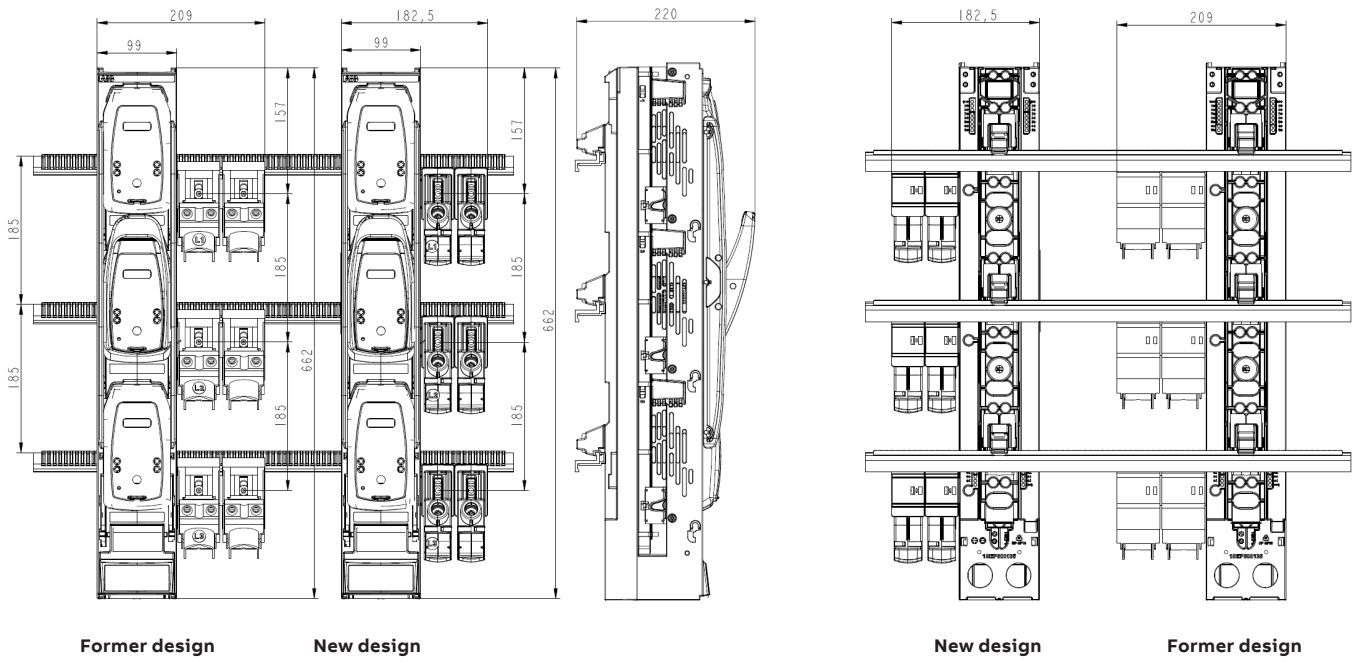


One side connector



Dimensional changes for 3 pole variants of sizes ZLBM123-2SC

Two side connector



One side connector

