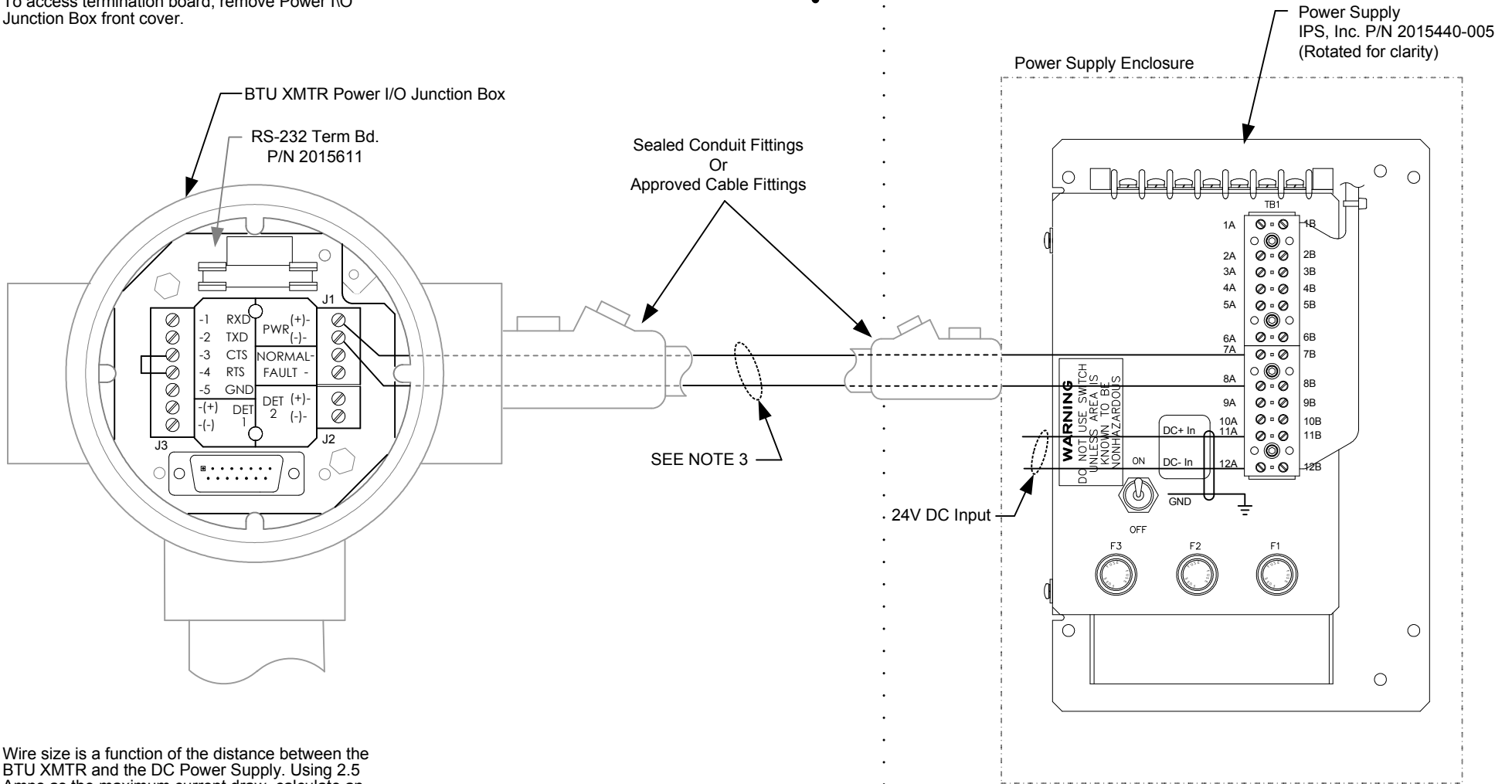


NOTES:

1. Prior to any installation in a classified hazardous location, verify installation methods by the Control Drawing referenced on the product's name tag.
2. To access termination board, remove Power I/O Junction Box front cover.



3. Wire size is a function of the distance between the BTU XMTR and the DC Power Supply. Using 2.5 Amps as the maximum current draw, calculate an adequate wire size so that the voltage measured at the BTU XMTR's Power I/O Junction Box is a minimum of 12.5 Volts.

REF: N/A

	TOTALFLOW	ACTION	DOC TYPE	TITLE	DWG NO.	REV	SHEET
	Products	L17578	UD	BTU 8000\8100 TO IPS 24VDC POWER SUPPLY	2102274	AA	1 OF 1