

DRIVEPM TEMPLATE UPDATE

Description:

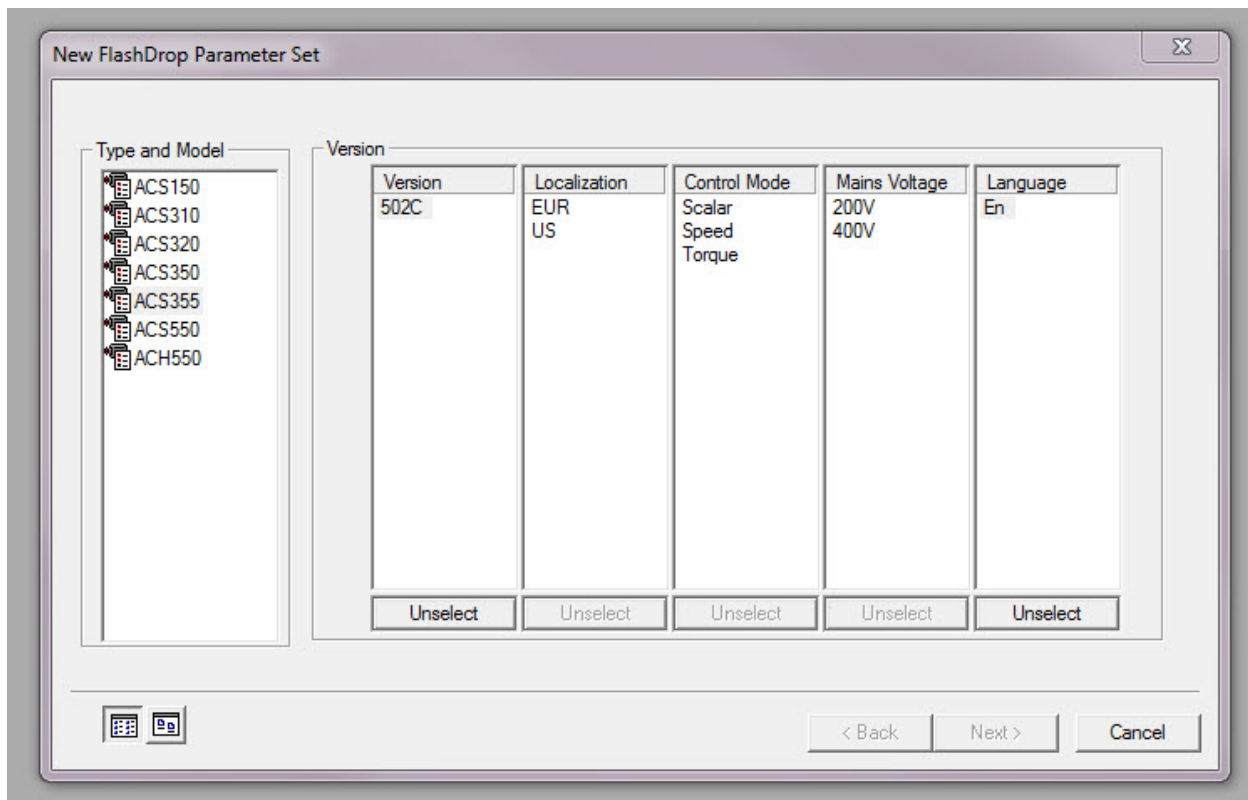
This document explains a common issue that can occur while updating a FlashDrop device with the DrivePM tool and how it can be corrected.

Problem:

As new drive firmware versions are released, FlashDrop devices will need to be updated with the correct drive templates from the internet. The **FlashDrop MFDT-01 User's Manual** describes how to update the template on page 28 of the REV B version. The downloaded files should be extracted to the folder on the PC that is running DrivePM in the following location: Program Files /DriveWare / DrivePM.

A problem can occur once the new template is installed, however. After downloading the files to the PC, and opening Drive PM, the templates that are available can be displayed by clicking File/New Parameter Set. The problem is that the new versions do not show up in the list.

(Newly loaded templates 503A, 503C, 5404, 5060, 5080, and 5090 are missing from the Version column.)



Author: Rick Akey, Jeff Fell		Date: 10/15/2013
Internal (abbnow) or External http://www.abb.us/drives	Industry – Industrial, HVAC	Document #: LVD-EOTN51U-EN
		Revision: A
Product Categories: ACS150, ACS310, ACS320, ACS350, ACS355, ACS550, ACH550		



Reference:

FlashDrop MFDT-01 User's Manual 3AFE68591074 Rev B / EN

<http://www.abb.us/AbbLibrary/DownloadCenter/?CategoryID=9AAC129152&View=Result&SortBy=DocKind>

Corrective Actions:

There is a missing step that can be found in the **readme of DrivePM template update.txt** file that is in the **00533632.zip** folder that is extracted from the **Template files for FlashDrop and DrivePM 1.1(and later versions)** after downloading it from the internet.

From the **readme of DrivePM template update.txt** file:

Please note:

File DPM_Config.ini is copied to the root of DrivePM. Kindly replace old DPM_Config.ini file in c:\winnt (or c:\windows) with this one.

Template update file may include also new firmware to the FlashDrop unit. This is normally extracted to the DrivePM installation folder.

Once the DPM_Config.ini is moved to the correct location the Version files should appear as expected once DrivePM is reopened.

Author: Rick Akey, Jeff Fell		Date: 10/15/2013
Internal (abbnw) or External http://www.abb.us/drives .	Industry – Industrial, HVAC	Document #: LVD-EOTN51U-EN
		Revision: A
Product Categories: ACS150, ACS310, ACS320, ACS350, ACS355, ACS550, ACH550		