


ACCESS TO: Front Only	PHASE: 3P4W	CITY OF SEATTLE - (WA)
CLASS: 2	AMPERE: 2000A	CODE: ST PT COMPT
LABEL: U/L SE	BUS MTL: Cu 1000A/in <sup>2</sup>	UTILITY PER EUSERC PG. 322, 330
VOLTAGE: 480/277V	PLATE: Silver Plate	METER PER EUSERC PG. 332, 326
STYLE: ReliaGear	RATING: Fully Rated	UGPS PER PG 345
BUS BRACING (RMS SYM): 100000A		LUG LANDING PER 347
DEV.MIN.INT.RATING (RMS SYM): 100000A		

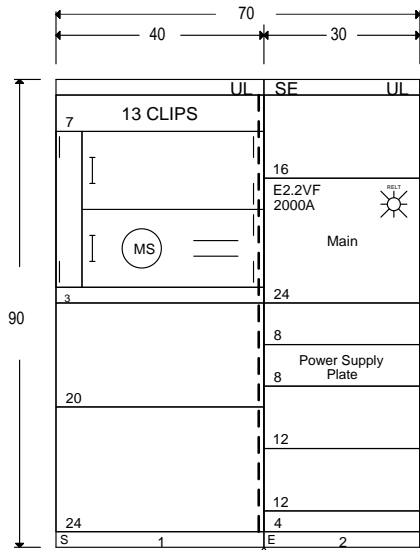
### SwitchBoard / Device Information

Circuit No.	Device	Trip Amps	Sensor Amps	Poles	Nameplates	Lugs/Cable Size	Notes
Main	E2.2VF	2000	2000	3			11,12,13,14,15,16,17,20,21,22

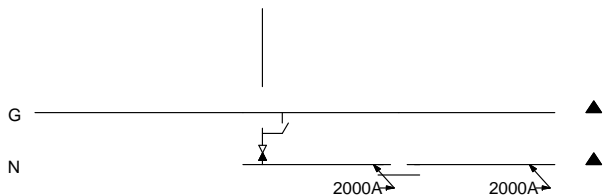
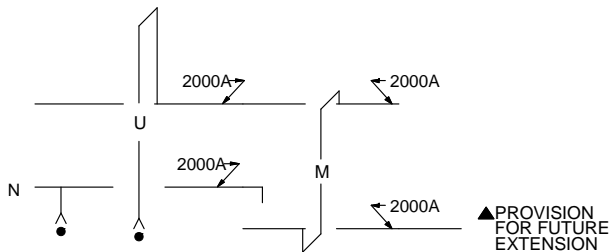
- NOTES:
- Equipment ground bus furnished with lugs.
  - Copper ground bus furnished.
  - Switchboard furnished with Nameplates.
  - All Nameplates to be fastened with screws.
  - Shipping splits between each section, ship each section separately.
  - Switchboard furnished with hinged gutter covers.
  - Switchboard furnished with full height vertical bus for distribution sections.
  - Switchboard furnished with fully rated panel.
  - EUSERC utility section(s) furnished with handles and sealing provisions per EUSERC specifications.
  - INSTALLATION NOTE: Caution: If switchboard is installed on a housekeeping slab greater than 2-1/2" the meter may be over the 6'3" maximum allowable meter height. Consult Utility if you need more information.
  - Device is 100 percent rated.
  - Device is furnished with integral ground fault protection.
  - Device is furnished with RELT (Reduced Energy Let Through).
  - Device requires RELT or ZSI feature if Authority having jurisdiction has adopted NEC 2014 code requirements.
  - Device Furnished with Ekip Touch (LSIG) Programmer.
  - Device furnished with (4Q) Auxiliary Contacts - 400V
  - Device furnished with (S51/2) Bell Alarm - 250V
  - Estimated total factory connected wiring points for the lineup 28.
  - Estimated shipping weight for the lineup is 1564 lbs.
  - Device furnished with DC Supply - 24V - 48V
  - Device furnished with RELT-Ekip Signalling 2K3
  - Device furnished with Padlock in open position

PROJECT NAME : Merchandise Program		DRAWING TITLE: Device Information	PRODUCT NAME:	DRAWING NO:
CUSTOMER:		CREATED BY:	ReliaGear	ITEM NO: RSBM42010CN1BEU
		DATE:	Merchandise SB	MARKS:Merch swbd 2000A MCB EUSERC N1
		REVISION NO.: 1		QUOTE NO:
				SHEET: 1 of 3

ACCESS TO: Front Only	PHASE: 3P4W	CITY OF SEATTLE - (WA)
CLASS: 2	AMPERE: 2000A	CODE: ST PT COMPT
LABEL: U/L SE	BUS MTL: Cu 1000A/in <sup>2</sup>	UTILITY PER EUSERC PG. 322, 330
VOLTAGE: 480/277V	PLATE: Silver Plate	METER PER EUSERC PG. 332, 326
STYLE: ReliaGear	RATING: Fully Rated	UGPS PER PG 345
BUS BRACING (RMS SYM): 100000A		LUG LANDING PER 347
DEV.MIN.INT.RATING (RMS SYM): 100000A		



733 lbs (Est.)      831 lbs (Est.)  
FRONT VIEW



BUSSING DIAGRAM

● LUGS PROVISIONS ONLY PER POWER COMPANY SPECIFICATIONS

PROJECT NAME : Merchandise Program
CUSTOMER:

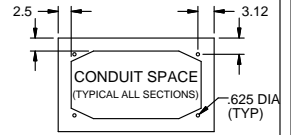


DRAWING TITLE: Front View/ Bussing
CREATED BY:
DATE:
REVISION NO.: 1

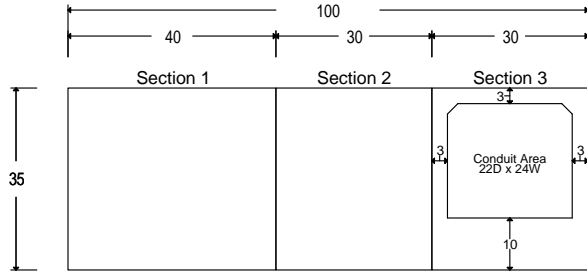
PRODUCT NAME:  
**ReliaGear**  
Merchandised SB

DRAWING NO:	RSBM42010CN1BEU
ITEM NO:	MARKS:Merch swbd 2000A MCB EUSERC N1
QUOTE NO:	
SHEET:	2 of 3

ACCESS TO: Front Only	PHASE: 3P4W	CITY OF SEATTLE - (WA)
CLASS: 2	AMPERE: 2000A	CODE: ST PT COMPT
LABEL: U/L SE	BUS MTL: Cu 1000A/in <sup>2</sup>	UTILITY PER EUSERC PG. 322, 330
VOLTAGE: 480/277V	PLATE: Silver Plate	METER PER EUSERC PG. 332, 326
STYLE: ReliaGear	RATING: Fully Rated	UGPS PER PG 345
BUS BRACING (RMS SYM): 100000A		LUG LANDING PER 347
DEV.MIN.INT.RATING (RMS SYM): 100000A		

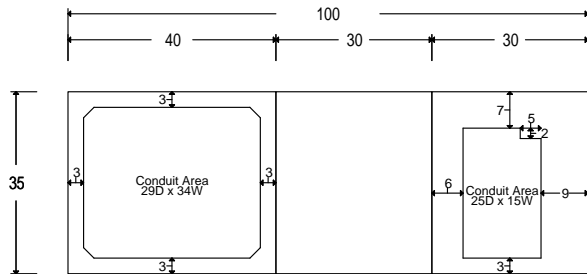


Top Conduit Area



Front Plan View

Bottom Conduit Area



Front Plan View

PROJECT NAME : Merchandise Program	<b>ABB</b>
CUSTOMER:	

DRAWING TITLE: Conduit View
CREATED BY:
DATE:
REVISION NO.: 1

PRODUCT NAME:	ReliaGear Merchandised SB
---------------	------------------------------

DRAWING NO:	RSBM42010CN1BEU
ITEM NO:	MARKS:Merch swbd 2000A MCB EUSERC N1
QUOTE NO:	
SHEET:	3 of 3