



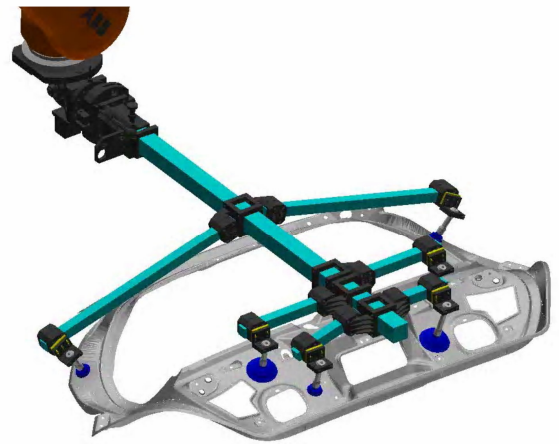
Modular tooling with suction cups

MAIN APPLICATIONS

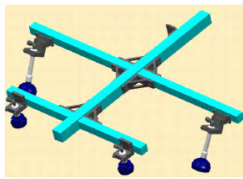
Material handling

Packaging

Palletizing

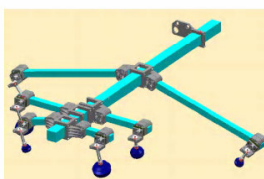


IRB Gripper - Small



Weight of the parts carried	1 à 10 Kg
Weight of the tooling	3 à 7 Kg
Number of suction cups	3 à 6

IRB Gripper - Medium/Large



Weight of the parts carried	5 à 25 Kg
Weight of the tooling	6 à 15 Kg
Number of suction cups	4 à 8

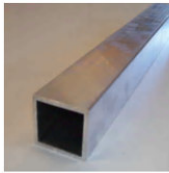
IRB Gripper - Large/XLarge



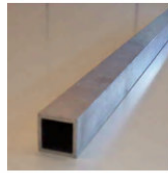
Weight of the parts carried	20 à 40 Kg
Weight of the tooling	20 à 40 Kg
Number of suction cups	6 à 12

Modular tooling with suction cups

Parts



1 - Central tube
50x50



1' - Cross tube
30x30



2 - Suction cup
attachment



3 - Directional
plate



4 - Directional
anchorage of 30



5 - Directional
anchorage of 50



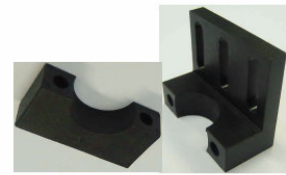
5' - Double directional
anchorage of 30



6 - Fix angular



7 - Half
attaches of 50



8 - Attachment



9 - Center
indexing



10 - Pivot



11 - Guide



12 - Pneumatic square



13 - Suction cups

