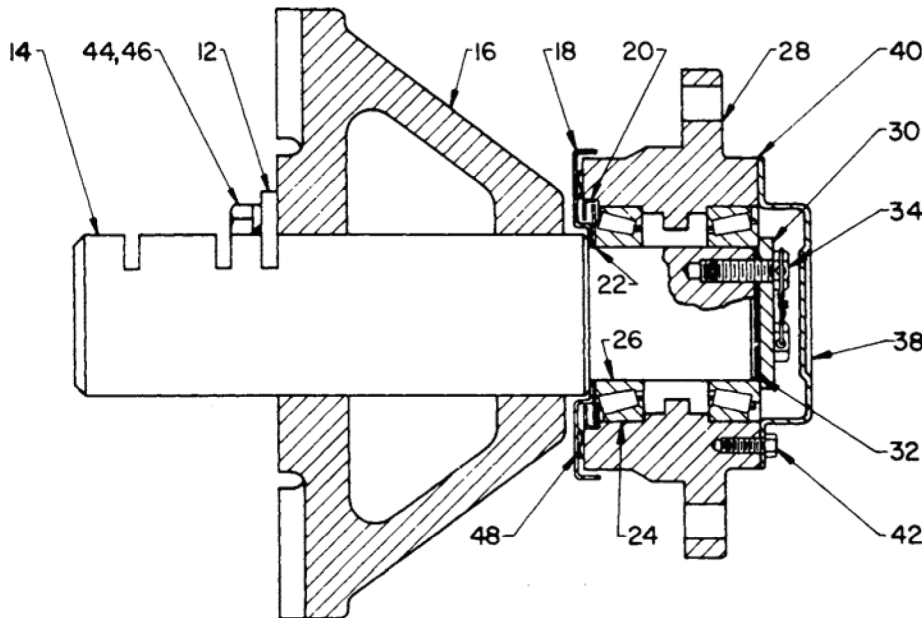


INSTRUCTION MANUAL for

No. 70 Traction Wheel Assembly

With Tapered Roller Bearings



NOTE: The two digit numbers are for reference only. Order parts by the six digit numbers in the Parts List. Each six digit number is a complete identification of the part or assembly.

REPLACEMENT OF PARTS

Tighten cap screws 34 to approximately 360 pound inches wrench torque. It is important not to exceed this value or breakage of the screws may result.

Parts for No. 70 Traction Wheel Assembly

Reference	Name of Part	No. Req'd.	Part No.	
12	Shaft Key	1	062001	
14	Shaft	1	062041	
16	Wheel Support	1	062047	
18	Seal Plate	1	062042	
20	Outer Seal	1	219028	
22	Inner Seal	1	062046	
24	Timken Cup	2	390816	
26	Timken Cone	2	390812	
28	Wheel Hub	1	062043	
30	Shaft Plate	1	062050	
32	Adjustment Shim	†		
	.010" Thick		427001	
	.007" Thick		427002	
	.015" Thick		427003	
34	Hex Head Cap Screw	3	062014	
38	End Cover	1	062044	
40	End Cover Gasket	1	062045	
42	Hex Head Cap Screw	3	411032	
44	Hex Head Cap Screw	2	411099	
46	Lockwasher	2	419013	
48	DYNAFACE® Seal	1	060108	
↓	Grease Fitting	1	405015	

† Approximately two each of the shims listed are required to give correct bearing adjustment.

↓ Not shown on drawing.

BALDOR

World Headquarters
P.O. Box 2400, Fort Smith, AR 72902-2400 U.S.A., Ph: (1) 479.646.4711, Fax (1) 479.648.5792, International Fax (1) 479.648.5895
Dodge Product Support
6040 Ponders Court, Greenville, SC 29615-4617 U.S.A., Ph: (1) 864.297.4800, Fax: (1) 864.281.2433
www.baldor.com

© Baldor Electric Company

All Rights Reserved. Printed in USA.

MN3042
(Replaces 499654)



06/30/09

MOUNTING INSTRUCTIONS

The Traction Wheel Hub Assembly is constructed to operate with a wheel (sprocket) ranging from two to six feet in diameter. The unit bolts directly to the supporting structure with four (4) 3/4 diam. bolts and can be adjusted vertically to three different operating positions. To adjust vertical position remove the two 1/2" hex head cap screws (44), the two lockwashers (46) and the shaft key (12). Move the wheel support (16) to the desired vertical position, insert shaft key (12) and lock it to the wheel support (16) via the two 1/2" hex head cap screws and the two lockwashers (44, 46).

LUBRICATION INSTRUCTIONS

The unit was packed at the factory full of an NLGI #2 Lithium base grease suitable for temperatures of -20°F to 250°F. Keep bearings full of grease, especially under dirty or wet conditions.

DRY CONDITIONS

For dry conditions and temperatures up to 180°F relubrication is optional. For temperatures above 180°F and up to 250°F frequent relubrication is recommended with an NLGI #2 Lithium base grease.

WET CONDITIONS

For wet, dirty conditions relubricate frequently with a grease recommended by a grease manufacturer.