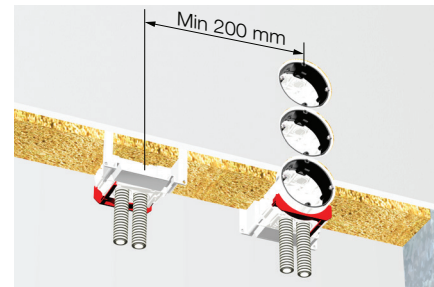
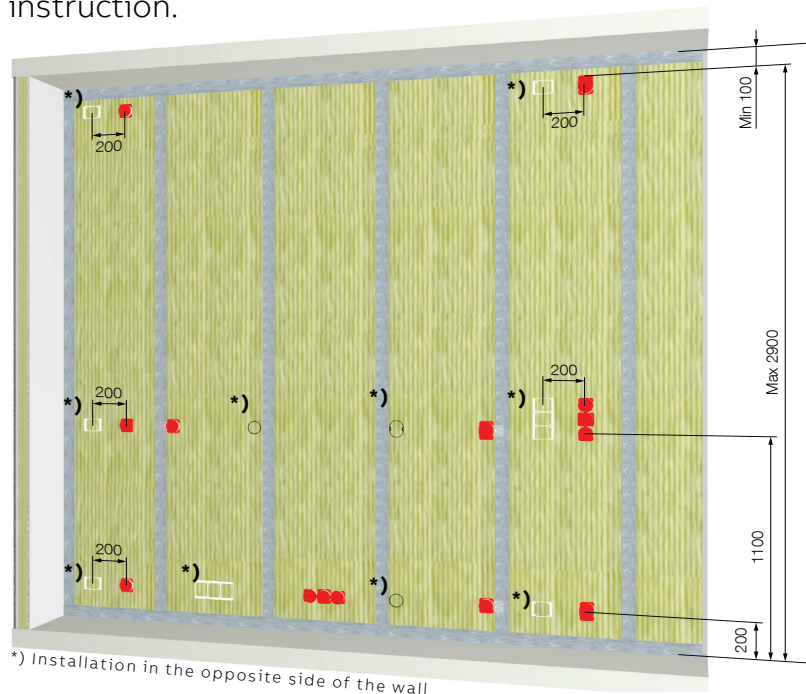
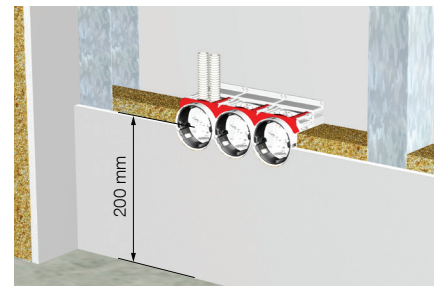


Installation instruction in EI30 fire-rated walls for AU80, AU80.2, AU81 and AU81.2 mounting boxes

ABB AU80, AU80.2, AU81 and AU81.2 mounting boxes are tested (Test report No. VTT-S-04801-16) for installation in EI30 fire-rated walls according to this installation instruction.



Installation of vertical combinations

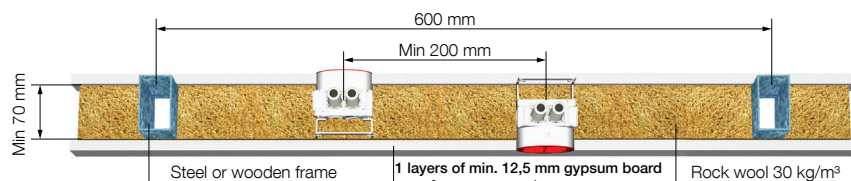


Installation of horizontal combinations

APPROVED INSTALLATIONS:

Wall structure:

Type A gypsum board. Steel or wooden frame c/c 600 mm. Min. 70 mm rock wool 30 kg/m³. When boxes are installed to the opposite side of the wall c/c min 200 mm

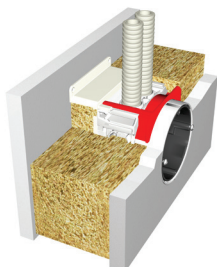


Box type

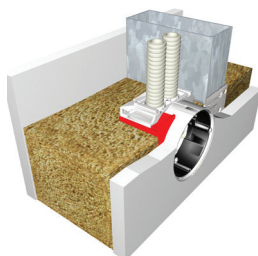


Installation height (H)	AU80			AU80.2	AU81	AU81.2
	Single box	Combination vertical 2-3 boxes	Combination horizontal 2-3 boxes	Single box	Single box	Single box
200 mm from the floor	✓	✓	✓	✓	✓	✓
1100 mm from the floor	✓	✓	✓	✓	✓	✓
100 mm from the ceiling	✓				✓	

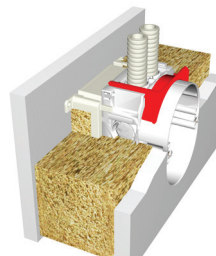
✓= Approved



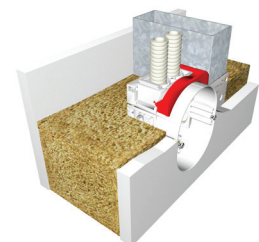
AU80 + AS27



AU80.2



AU81 + AS27

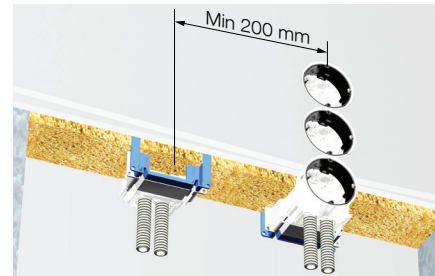
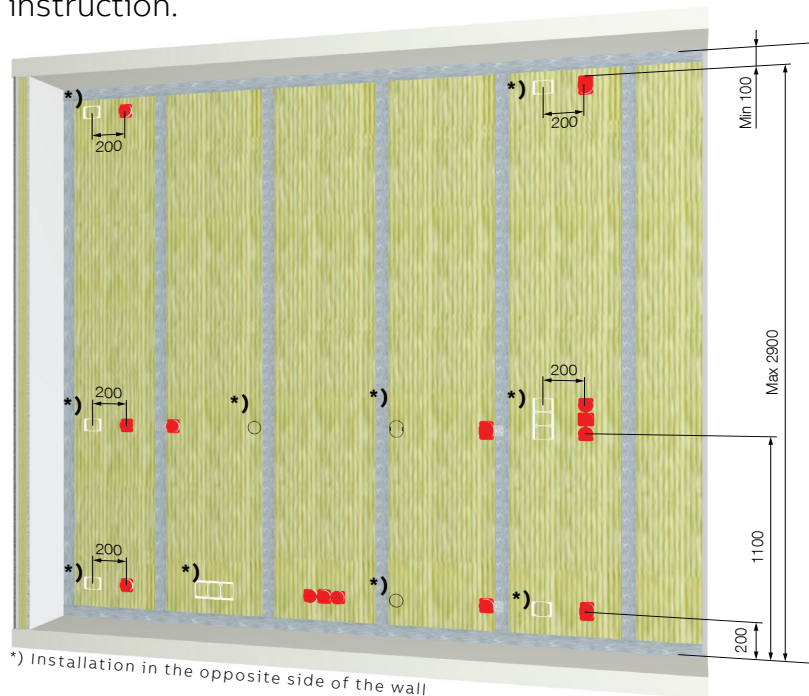


AU81.2

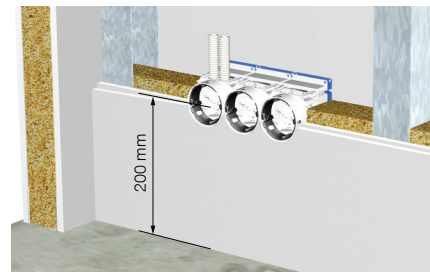
Rockwool has to be installed behind boxes when metal brackets are use and inside of the box supports AS27 and AS 27.12

Installation instruction in EI60 fire-rated walls for AU80, AU80.2, AU81 and AU81.2 mounting boxes

ABB AU80, AU80.2, AU81 and AU81.2 mounting boxes are tested (Test report No. VTT-S-05506-16) for installation in EI60 fire-rated walls according to this installation instruction.



Installation of vertical combinations

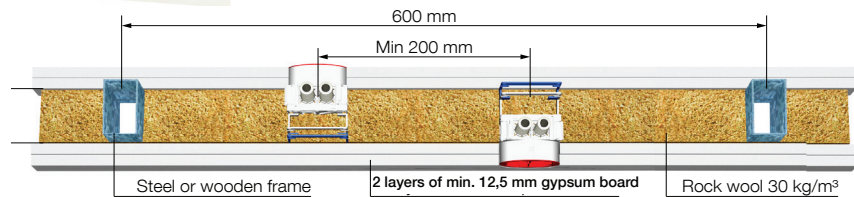


Installation of horizontal combinations

APPROVED INSTALLATIONS:

Wall structure:

Type A gypsum board. Steel or wooden frame c/c 600 mm. Min. 70 mm rock wool 30 kg/m³. When boxes are installed to the opposite side of the wall c/c min 200 mm



Box type

AU80

AU80.2

AU81

AU81.2

Installation height (H)

Single box

Combination vertical 2-3 boxes

Combination horizontal 2-3 boxes

Single box

Single box

Single box

200 mm from the floor

✓

✓

✓

✓

✓

✓

1100 mm from the floor

✓

✓

✓

✓

✓

✓

100 mm from the ceiling

✓

✓

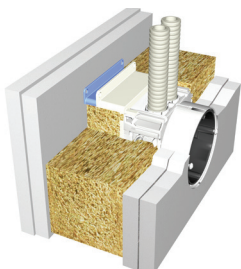
✓

✓

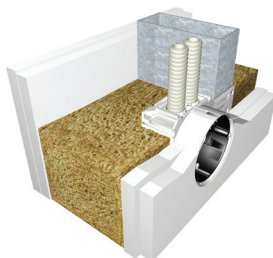
✓

✓

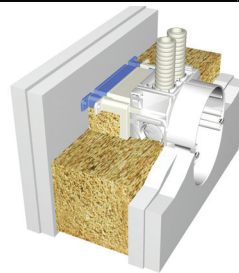
✓= Approved



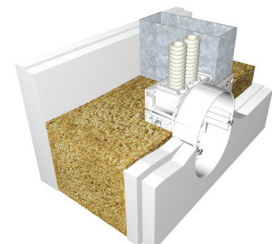
AU80 + AS27 + AS27.12



AU80.2



AU81 + AS27 + AS27.12



AU81.2

Rockwool has to be installed behind boxes when metal brackets are use and inside of the box supports AS27 and AS 27.12