

We reserve all rights in this document and in the information contained therein. Reproduction, use or disclosure to third parties without express authority is strictly forbidden. © ABB 19

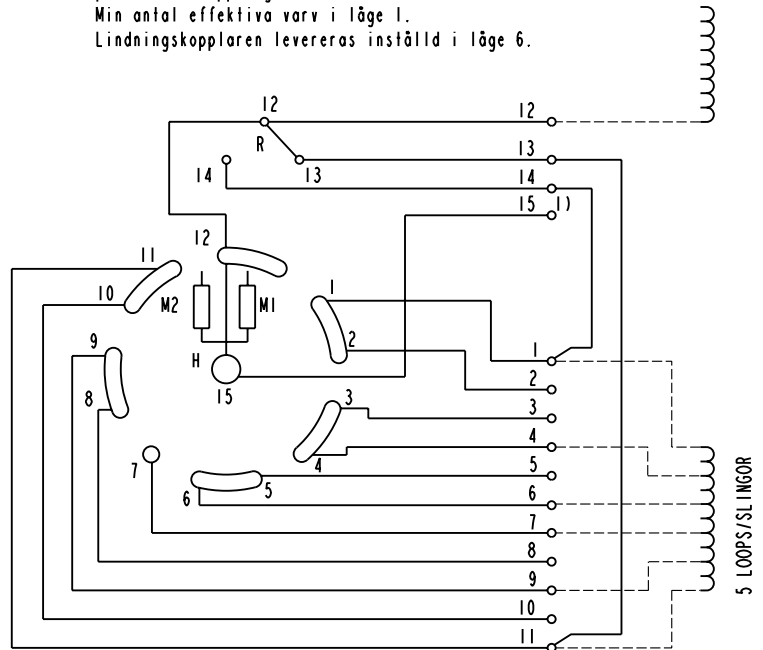
| Pos. Lage | R connects förbinder | H connects förbinder |
|-----------|----------------------|----------------------|
| 1 | 12-13 | 2-15 |
| 2A | | 3-15 |
| 2 | | 4-15 |
| 3A | | 5-15 |
| 3 | | 6-15 |
| 4 | | 7-15 |
| 5A | | 8-15 |
| 5 | | 9-15 |
| 6A | | 10-15 |
| 6B | | 11-15 |
| 6 | | 12-14 |
| 6C | 1-15 | |
| 6D | 2-15 | |
| 6E | 3-15 | |
| 7 | 4-15 | |
| 7A | 5-15 | |
| 8 | 6-15 | |
| 8A | 7-15 | |
| 9 | 8-15 | |
| 10 | 9-15 | |
| 10A | 10-15 | |
| 11 | | 10-15 |

A position with letter is a through position and gives the same voltage as the normal position.

Läge med bokstav är ett genomloppsläge och ger samma spänning som normalläget.

On-load tap-changer type UZER., UZFR., 11 tap positions, plus/minus switching.
Min effective No. of turns in pos. 1.
The tap-changer is delivered set in pos. 6.

Lindningskopplare typ UZER., UZFR., 11 lägen, plus/minus-koppling.
Min antal effektiva varv i läge 1.
Lindningskopplaren levereras inställd i läge 6.



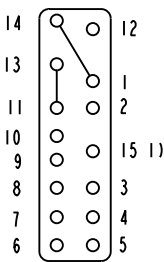
The tap-changer is shown in pos. 6
Lindningskopplaren visad i läge 6

- R Change-over selector Plus/minus-omkopplare
- H Main contact Huvudkontakt
- M1, M2 Transition contacts Motståndskontakter

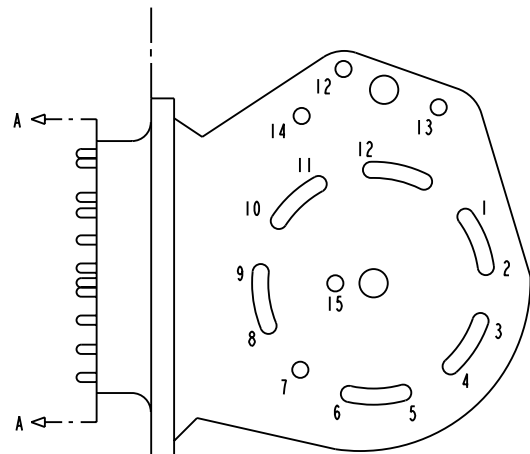
1) Connections between the terminals 15 of the three phases are included in the star-point type.

Förbindningar mellan uttag 15 i de tre faserna ingår i nollpunktsutförandet.

Terminal board Plint



Section A-A
Sektion A-A



Transformer tank Tap-changer tank
Transformatorlåda Lindningskopplarlåda

| | |
|-------------------|----------------------|
| Sheet | Cont |
| Year | Week |
| Dept | |
| Rev In | Revision |
| Appd | Year Week |
| Accepted by | Accepted for prod by |
| Design checked by | Drawn by |
| Issued by | Dept Year Week |



Asea Brown Boveri

Description (English)
CONNECTION DIAGRAM

Description (own language)
KOPPLINGSSHEMA

DATA ORIGINAL

File name
0397-2

Lang Sheet

1

Rev In Cont

-

5492 0397-2