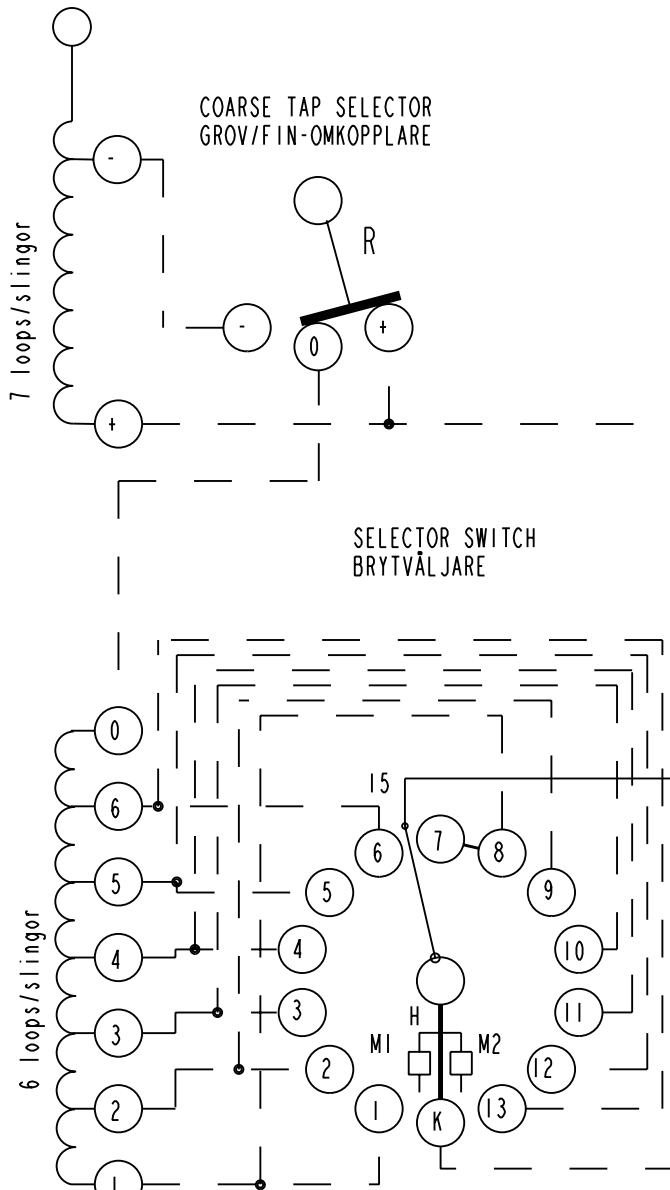


On-load tap-changer type UBBD, 13 tap positions coarse/fine-switching.
 Max effective No. of turns in pos 1.
 The tap-changer is delivered set in pos 7, the preceding pos. was 6.

Lindningskopplare typ UBBD, 13 lägen, grov/fin-koppling.
 Max antal effektiva varv i läge 1.
 Lindningskopplaren levereras inställd i läge 7, föregående läge var 6.

Pos Läge	R connects förbinder	H connects förbinder
1		8 - 15
2		9 - 15
3		10 - 15
4	0+	11 - 15
5		12 - 15
6		13 - 15
7		K - 15
8		1 - 15
9		2 - 15
10	0-	3 - 15
11		4 - 15
12		5 - 15
13		6 - 15



1) OUTPUT TERMINAL
STRÖMAVTAGNING

1) Internal connections between the terminals 15 of the three phases are included in the star-point type. Connection between 7 and 8 is included. Dashed lines show in delivery not included leads belonging to the cleats and leads.

Inre förbindningar mellan uttag 15 i de tre faserna ingår i nollpunktsutförande. Förbindningar mellan 7 och 8 ingår. Streckade linjer visar i leveransen ej ingående ledare tillhörande anslutningsdonet.

H Main contact
Huvudkontakt
M1, M2 Transition contacts
Motståndskontakter

Rev	In	Revision	Appd	Year	Week
-	-		-	-	-

Accepted by qual control R. Yngvesson	Accepted for prod by	Description (English) CONNECTION DIAGRAM UBBD	DATA ORIGINAL
Design checked by B-O. Stenestam	Drawn by L. Bergman	Description (own language) KOPPLINGSSCHEMA UBBD	File name 0389-4
Drawing checked by M. Hedlund	Issued by Dept COM/TKO	Year 97	Week 32
Asea Brown Boveri		5492 0389-4	Lang Sheet 1
			RevInd Cont -

We reserve all rights in this document and in the information contained therein. Reproduction, use or disclosure to third parties without express authority is strictly forbidden. © ABB 19

Sheet	Cont
Year	Week
Dept	
RevInd	
Design checked by	
Drawn by	