

We reserve all rights in this document and in the information contained therein. Reproduction, use or disclosure to third parties without express authority is strictly forbidden. © ABB 19

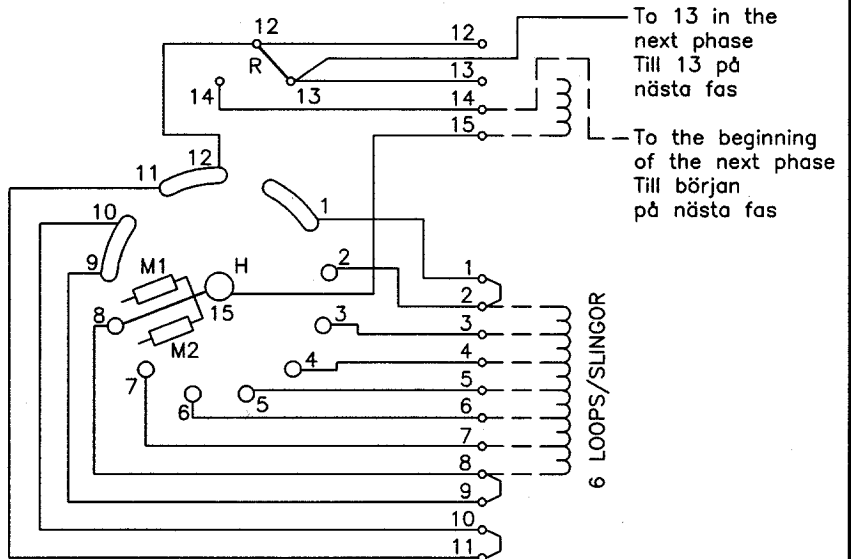
Pos. Lage	R connects förbinder	H connects förbinder
1	12-13 Y	2-15
2		3-15
3		4-15
4		5-15
5		6-15
6		7-15
7		8-15
7A	9-15	
7B	10-15	
7C	11-15	
7D	12-15	
8B	12-14 D	1-15
8A		2-15
8		3-15
9		4-15
10		5-15
11		6-15
12		7-15
13	8-15	
14		

When operating from pos. 7 to 8 and from 8 to 7 the transformer must be de-energized.

Vid manöver från läge 7 till 8 och från 8 till 7 måste transformatorn vara spänningslös.

On-load tap-changer type UZEYD, UZFYD, Y/D switching, 7 positions in Y and 7 positions in D.  
Max effective No. of turns in pos. 1 and in pos. 8.  
The tap-changer is delivered set in pos. 7.

Lindningskopplare typ UZEYD, UZFYD, Y/D koppling, 7 lägen i Y och 7 lägen i D.  
Max antal effektiva varv i läge 1 och läge 8.  
Lindningskopplaren levereras inställd i läge 7.



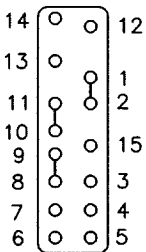
The tap-changer is shown in pos. 7  
Lindningskopplaren visad i läge 7

R Y/D change-over selector  
Y/D-omkopplare

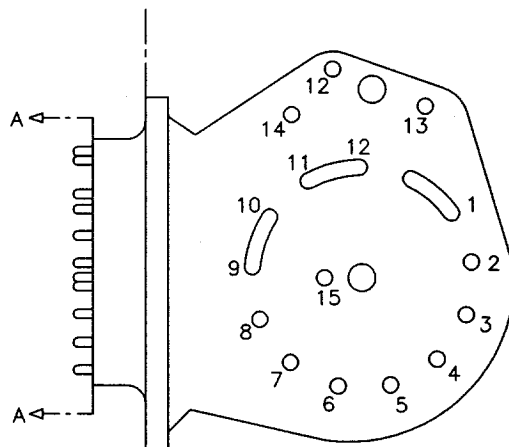
H Main contact  
Huvudkontakt

M1, M2 Transition contacts  
Motståndskontakter

Terminal board  
Plint



Section A-A  
Sektion A-A



Transformer tank  
Transformatorlåda

Tap-changer tank  
Lindningskopplarlåda

Rev Ind	Revision	Accepted for prod by	Description (English)	DATA ORIGINAL
-	-	R. Yngvesson	CONNECTION DIAGRAM	
Design checked by	Drawn by	Description (own language)	File name	
B-O. Stenestam	L. Bergman	KOPPLINGSSCHEMA	0399-3	
Drawing checked by	Issued by Dept	Year	Week	Lang
M. Hedlund	COM/TKO	97	34	Sheet
				1
Asea Brown Boveri				Revind
5492 0399-3				Cont
				-

Sheet

Cont

Year

Week

Dept

Revind

Design checked by

Form No.