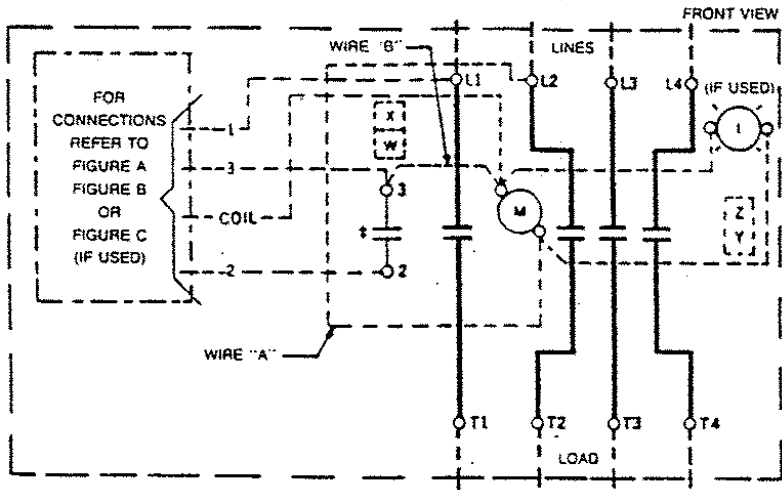
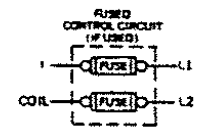
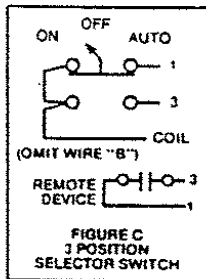
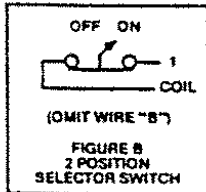
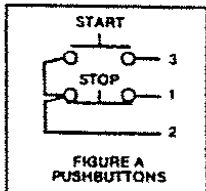


GEJ-7211 Information Label

CR360L Lighting Contactor

60, 100, 200, 300 Ampere



The following accessory kits may be installed on this device.

Aux Contact	60 Ampere CR305X200A, B, C, X100D, E	100 Ampere CR305X300A, B, C, X100D, E	200 Ampere CR305X500A, B, C, X100E, E	300 Ampere CR305X500A, B, C, X100D, E CR305X541A, B
Control Circuit Fuse	3 Movable & 6 Sta. Cont Coil (Plus Suffix No. below)	546A780G051 15D23G	55-153677G002 55-153608G	55-154607G051 55-501493G
Principal Renewal Parts	3 Movable & 6 Sta. Cont Coil (Plus Suffix No. below)	546A780G051 15D23G	55-153677G002 55-153608G	55-154607G002 55-501493G
For CSA-GND KIT	1/2-IN CONDUIT	55-213403G001	1 1/2-IN CONDUIT	55-213403G005
	3/4-IN CONDUIT	55-213403G002	2-IN CONDUIT	55-213403G006
	1-IN CONDUIT	55-213403G003	2 1/2-IN CONDUIT	55-213403G007
	1 1/4-IN CONDUIT	55-213403G004	3-IN CONDUIT	55-213403G008

M-LINE CONTACTOR

I-INDICATING LIGHT

Use 75°C. copper conductors only, for field wiring. Torque line and load terminals as shown at right.

Rating	Lb-in
60A	50
100A	150
200A	250
300A	300

FOR SEPARATE CONTROL—Omit wire "A" and connect control source to coil and to 1 on control device.

NOTE: Refer to the National Electrical Code. Additional control circuit overcurrent protection may be required.

3-PHASE RATINGS APPLY TO 2-PHASE FORMS

COIL (Order Coil No. plus coil suffix number per table below)

60 Hz	115-120V	200-208V	230-240V	—	460-480V	575-600V
50 Hz	110V	—	220V	380V	440V	550V
Coil Suffix	002	023	003	064	004	005

EXTRA AUXILIARY CONTACTS

Final Suffix Letter Of CR Number	Contact Location, See Diagram			
	W	X	†Y	†Z
A (Or None)				
B				
C				
D				
E				
F				
G				
H				
J				
†Z	No Holding Interlock			

† Not available when Control Circuit Fuse Kit is used.