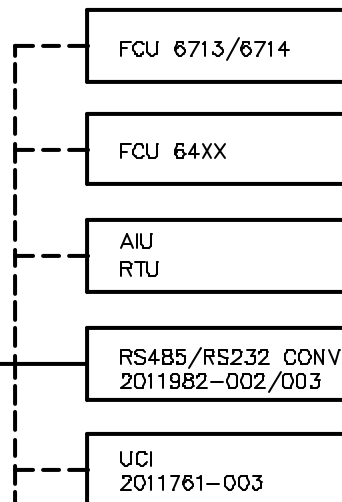
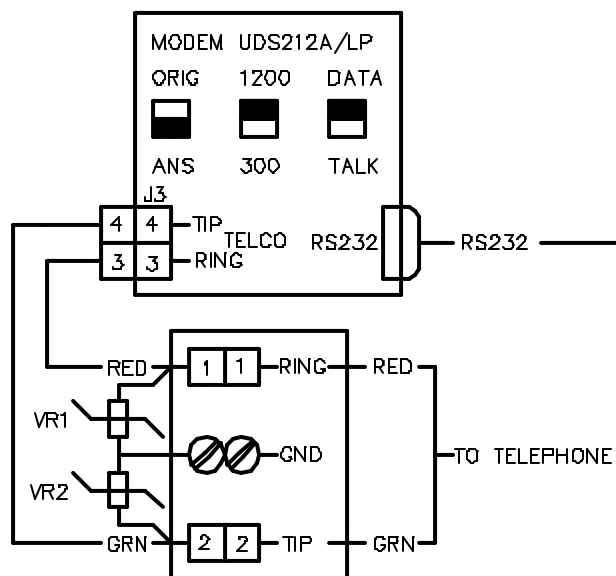


NOTE:

1 WHEN 2012506-001 IS USED IN 64XX, BLU WIRE IS NOT USED AND SPADE LUGS ARE NOT USED.

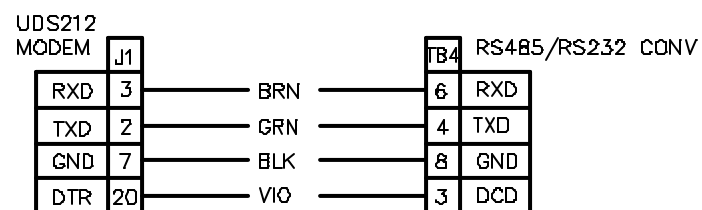
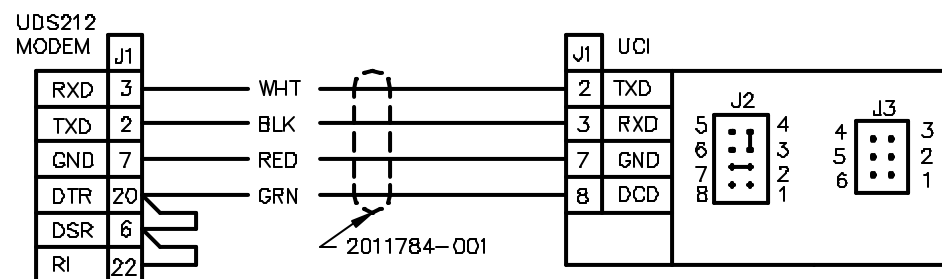


FCU	COMMUNICATION INTERFACE CARDS
66XX	<div> <div>COMM INTERFACE 2000003-001</div> <div> <div>• RADIO</div> <div>• MODEM</div> </div> </div> <div> <div>VCI RS232 2010283-002</div> <div> <div>• 232</div> <div>• TTL</div> </div> </div> <div> <div>EXP I/O</div> <div> <div>RS232 2011690-002</div> <div>RS232(128KX8) 2011730-002</div> </div> </div>

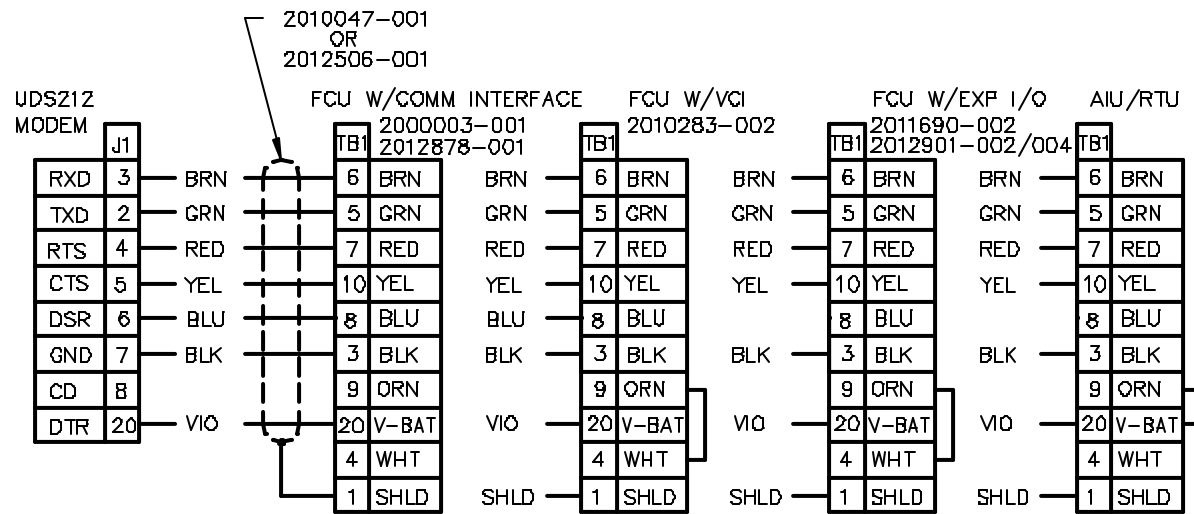
# REVISIONS

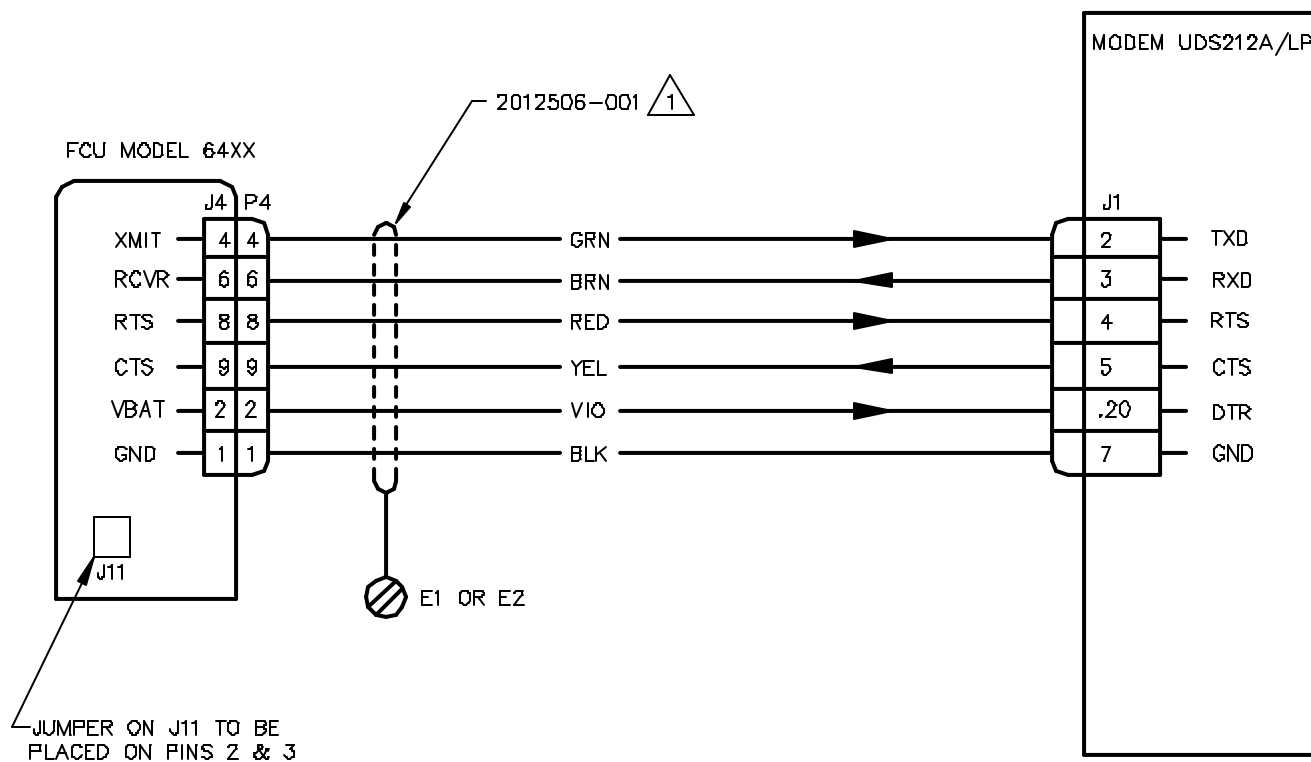
REV	ACTION	DRAWN	CHECKED	APPROVED	DATE
AF	D0810	KASTNER	WIDENER	HOLLAND	95-08-21
AG	D2277	GILL	HOLLAND	HOLLAND	96/03/13
AH	D5719	KASTNER	KASTNER	HOLLAND	96/06/05
AI	D12397	KASTNER	WIDENER	HOLLAND	01/12/10
AE	D0413	KASTNER	WIDENER	HOLLAND	95-01-17

ASSEMBLY/QUANTITY		ITEM NO.	PART NUMBER	DESCRIPTION	REF/ZONE DESIG MATERIAL	UNIT MEAS
PARTS LIST						
<div>THIRD ANGLE PROJECTION</div>	UNLESS OTHERWISE SPECIFIED DIMENSIONS ARE IN INCHES TOLERANCES ARE: DECIMAL .XX ± --- ANGULAR .XXX ± --- BREAK ALL SHARP CORNERS AND EDGES DIMENSIONS APPLY BEFORE FINISH DO NOT SCALE DRAWING		PRODUCT LINE	LEVEL	<div> <div>ABB</div> <div>TOTALFLOW Products</div> </div> <div> <div>TITLE</div> <div>WIRING INTERCONNECT</div> <div>WI - MODEM UDS212A/LP</div> <div>WI</div> </div>	
			<div>DESIGN</div> <div>G. HOLLAND</div> <div>DRAWN</div> <div>S. SMITH</div> <div>CHECKED</div> <div>HOLTSCRAW</div> <div>APPROVED</div> <div>G. HOLLAND</div>	<div>DATE</div> <div>90/7/8</div> <div>90/8</div> <div>90/8</div> <div>90/8/7</div>		
		SCALE	SIZE	UNIT	DRAWING NO.	REV
		NONE	B	WI	2012651	AI 1 of 6

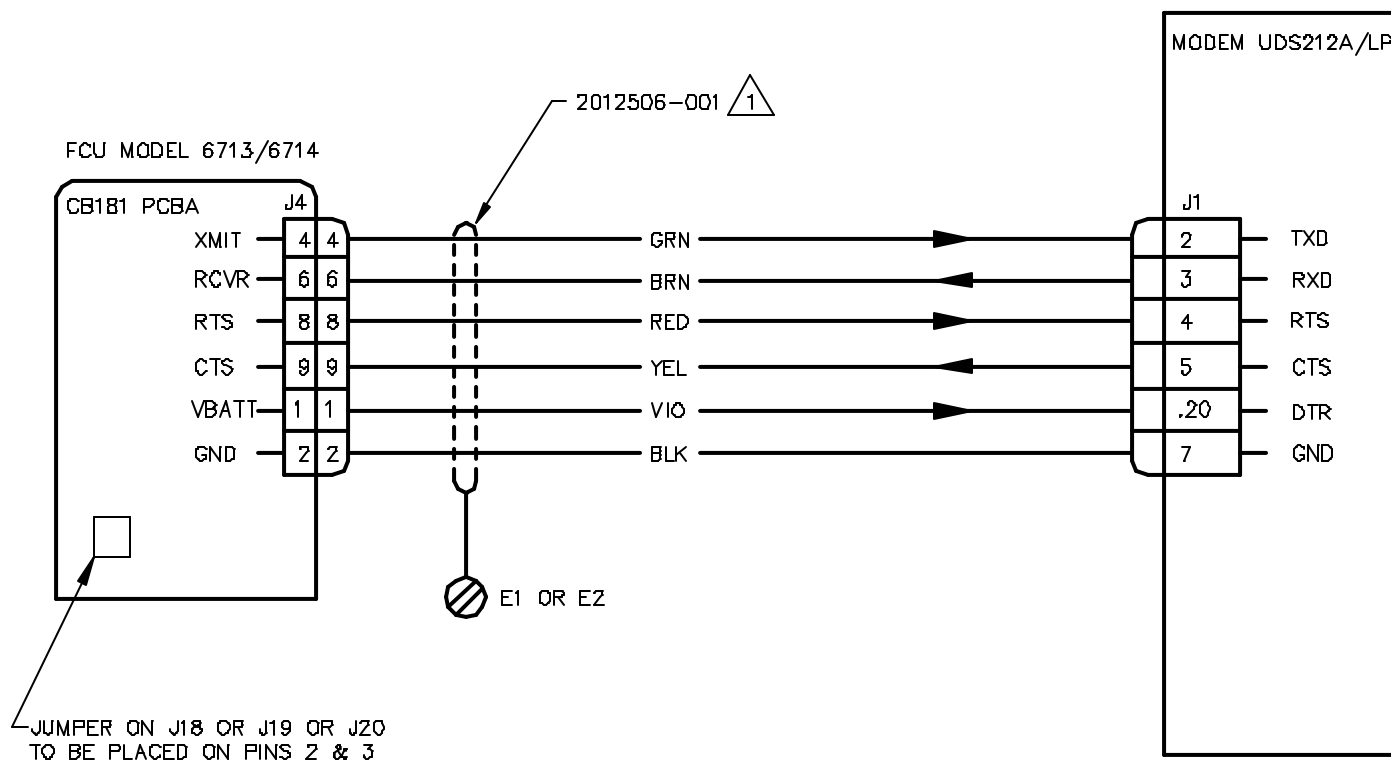


SCALE	SIZE	DWG TYPE	DRAWING NO.	REV	SHEET
NONE	B	WI	2012651	AI	2

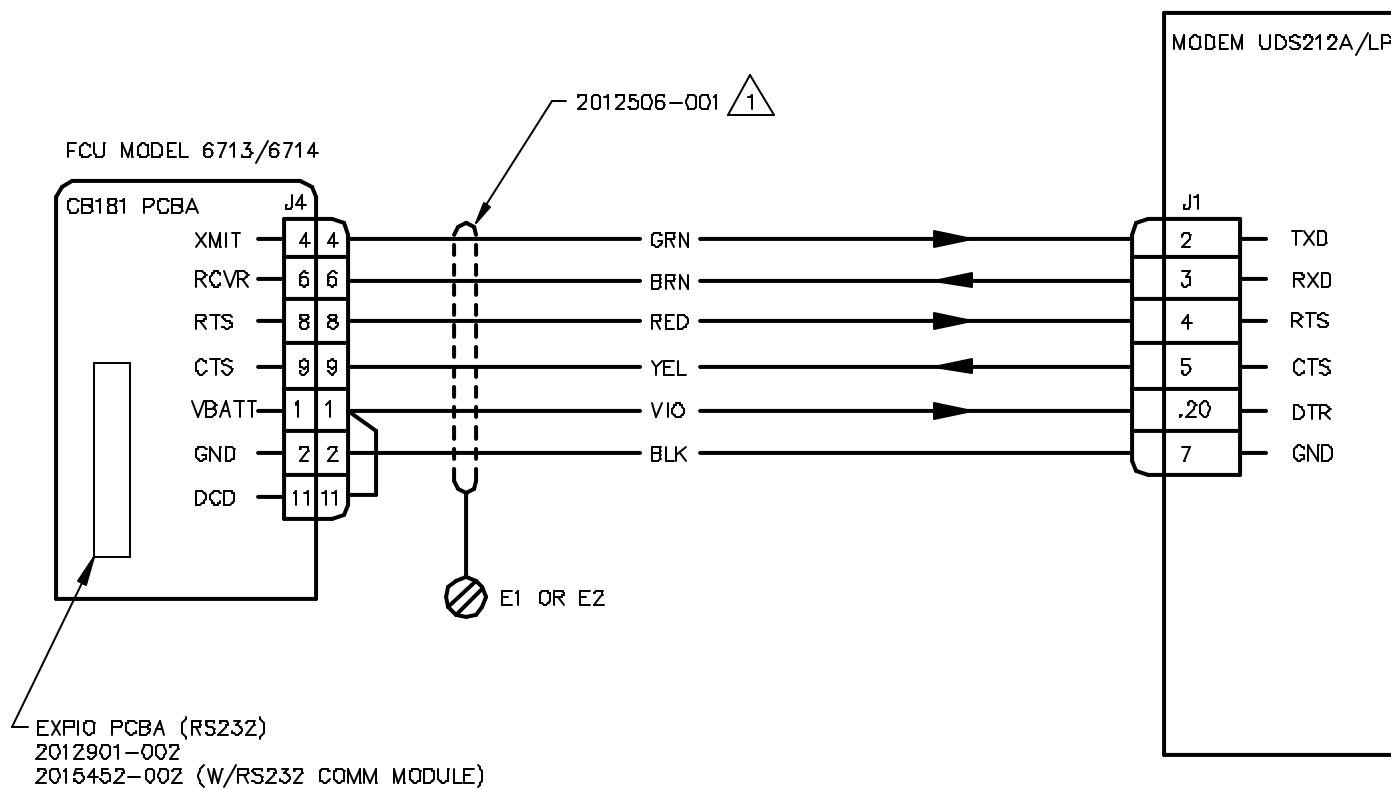




SCALE	SIZE	DWG TYPE	DRAWING NO.	REV	SHEET
NONE	B	WI	2012651	AI	4



SCALE	SIZE	DWG TYPE	DRAWING NO.	REV	SHEET
NONE	B	WI	2012651	AI	5



SCALE	SIZE	DRG TYPE	DRAWING NO.	REV	SHEET
NONE	B	WI	2012651	AI	6