

MT701.2: Reconstruction via the Plug-In

Best practice

GPG Building Automation

Doc.-Type: Step-by-Step Guide

Doc.-Nr. 9AKK106930A4336

Doc.-Version: 1.1

Department: Global Support

Author: C. Bachenheimer-Schäfer

System: i-bus KNX

Product: MT701.2

Page: 1/4

Date: 25.10.2016



Liability Disclaimer:

This document serves the sole purpose of providing additional, technical information and possible application and use cases for the contained products and solutions.

It **does not** replace the necessary technical documentation required for planning, installation and commissioning of the product. Technical details are subject to change without notice.

Despite checking that the contents of this document are consistent with the current versions of the related hard and software of the products mentioned within, deviations cannot be completely excluded. We therefore assume no liability for correctness. Necessary corrections will be introduced as and when new versions of the document are generated.

Introduction

This document explains, how to reconstruct a MT701.2 over a RS232 interface using a step-by-step guide.

With this process, the complete parameters of the annunciator and operating panel are transmitted to the Plug-In for further processing. This process can take several minutes, depending on the project size.

Objectives of the document

- With this document a programmer should be able to reconstruct a MT701.2 by using the plug-in. Furthermore, it points out what must be kept in mind during this process.

Content

To view the annunciator and operating panel in the plug-in it must be downloaded first on our product site. After successful installation, the .VD3 file can be found under the following path

„C:\Program Files(x86)\Ets3PlugIn\Ets3LkExt“.

This file has to be imported into the ETS' product catalog. By inserting the MT701.2 into the ETS project, you can then open these parameters in the plug-in.

1. Before it is possible to start the reconstruction, the interface has to be set under “Download RS232” -> “Setup”.

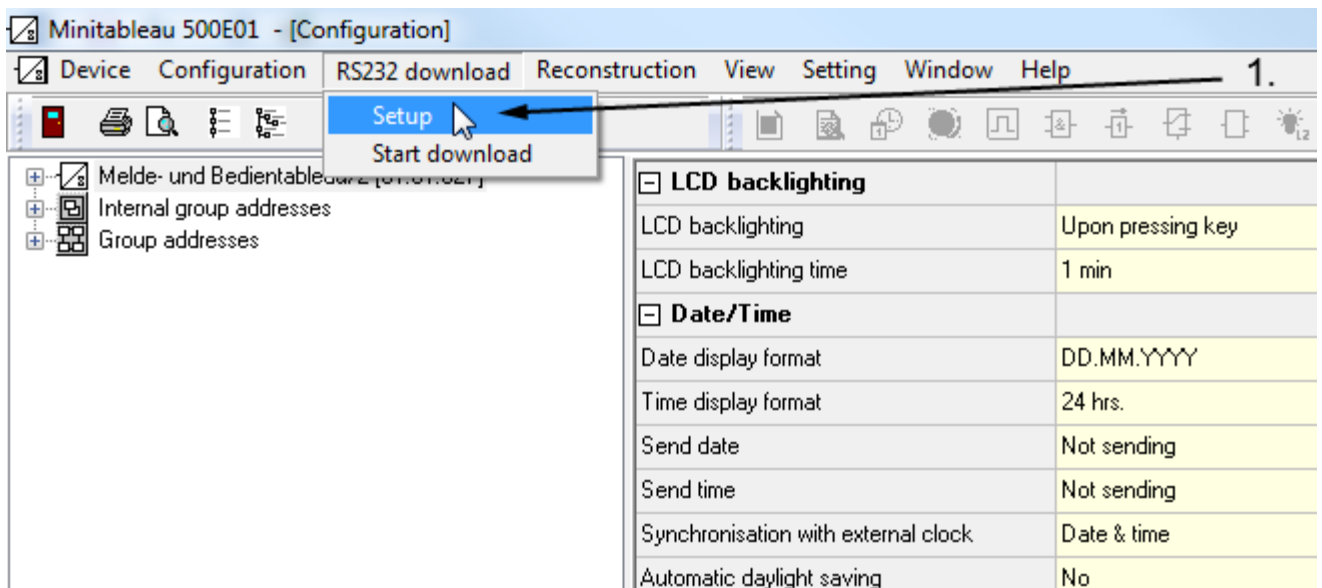


Figure 1: Open setup

2. The right interface is shown on the PC under "System control" -> "Device manager".

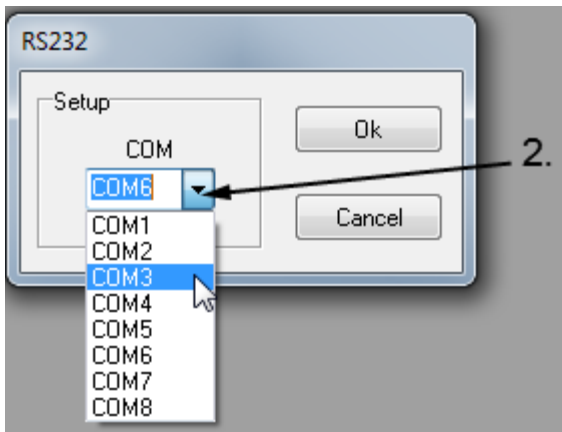


Figure 2: Select interface

3. After that you can start the reconstruction process by clicking "Reconstruction" -> "Reconstruct device over RS232..."

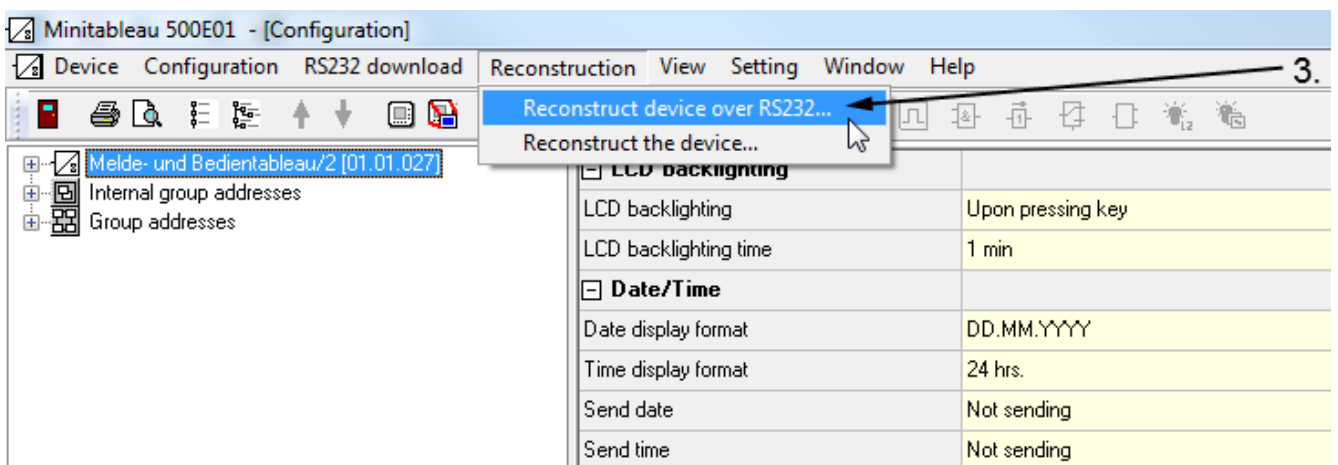


Figure 3: Start reconstruction

4. Confirm with "Yes" to start the process.

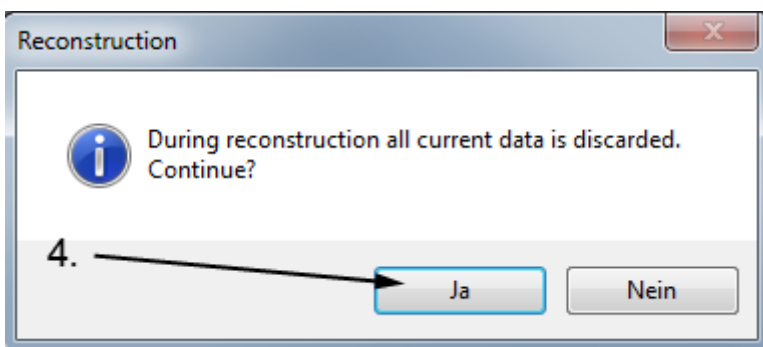


Figure 4: Confirm process

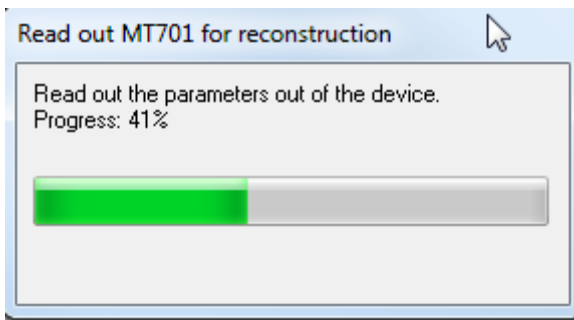


Figure 5: Reconstruction progress

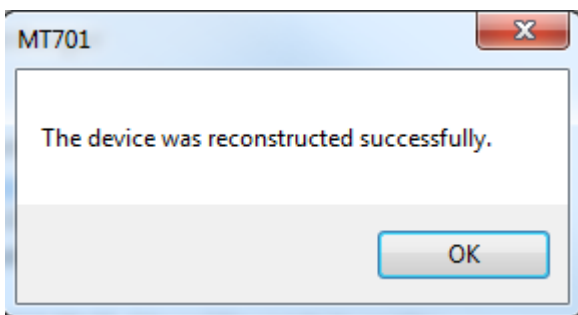


Figure 6: Process done

References to other documents

- [FAQ Home and Building Automation](#)
- [FAQ ABB MT701.2](#)
- [Engineering Guide Database](#)